



the news

PHILADELPHIA SECTION

AMERICAN SOCIETY OF CIVIL ENGINEERS

VOL. 46 - No. 4

Our 61st Year

JANUARY, 1974

JANUARY MEETING

Philadelphia Section, American Society of Civil Engineers

TUESDAY, JANUARY 8, 1974

Engineers' Club, 1317 Spruce Street, Philadelphia

Cocktails — 5:30

Dinner — 6:30

Meeting — 7:30

SUBJECT:

ENVIRONMENTAL IMPACT STATEMENTS

SPEAKER:

SHELDON MEYERS, Director, Office of Federal Activities Environmental Protection Agency, Washington, D. C.

PROGRAM HOST:

GERALD M. McDONNELL, Chairman, Hydraulics and Sanitary Group

The preparation of assessments of environmental impact as outlined by the National Environmental Policy Act (NEPA) involves four key elements. These include assessments of impacts on resources such as air, water, land and socio-economic areas. The general discussion of NEPA involves the requirements, implementation, problems and suggested improvements directed at Environmental Impact Statements. Civil Engineers should be vitally interested in developing a deeper understanding of the many aspects of this important topic.



Mr. Sheldon Meyers

Mr. Sheldon Meyers, Director, Office of Federal Activities, U. S. Environmental Protection Agency; received B.M.E. degree from the State University of New York in 1952, M.S.E. from the University of Michigan in 1955, and the M.B.A. from New York University in 1967. Mr. Meyers has been with EPA since its inception and prior to this present assignment was responsible for developing stationary source air pollution controls for the Agency at the Research Triangle in North Carolina. From 1958 to 1969, when he joined the air pollution control program, Mr. Meyers was with the Atomic Energy Commission in New York where he served in a number of progressively responsible research and development positions. Mr. Meyers has also been with the Argonne National Laboratory and Westinghouse's Bettis Plant where he contributed to the development of boiling water and pressurized water reactor power plants, respectively.

JANUARY MEETING FEATURES "DREXEL NIGHT"

The Philadelphia Section meeting January 8, 1974 will focus on Drexel University's Civil Engineering school. Dr. Frederic Roll, Student Chapters Committee Chairman of the Section, has forwarded to Professor Robert M. Koerner four complimentary dinner tickets to be distributed to selected students. Dr. Koerner, Phila. Section Vice President, is Faculty Advisor for the Drexel Student Chapter. He has invited alumni and students of the Day and Evening Colleges, as well as Faculty and Student Chapter officers and members, to attend. Dr. P. Walton Purdom, Civil Engineering Department Chairman at Drexel, will speak on current programs and curricula.

A "THANK YOU" FROM THE LOYALTY FUND

While we do not wish to single out any individual by name, we do wish to thank every member who contributed to the Phila. Section's "Loyalty Fund," at dues-paying time.

We want them to know that the Section appreciates very much their generosity. Even with the increase in dues, our expenses keep bounding ahead. We consider these added contributions invaluable in our quest to provide continued and expanding services to meet the professional objectives of and high standards of the Section's activities and goals.

Again, our sincere appreciation to all who generously contributed to the Loyalty Fund.

Sincerely,

Ted Davis, Treasurer

Free Beer and Refreshments at the Meeting

Mail Reservation Cards Immediately — Win a FREE DINNER!

STUDENTS — Plan to attend for Dinner (Half Price) or meeting after Dinner

DECEMBER MEETING

December 11, 1973

Engineers' Club

The Transportation and Urban Development Technical Group was the host for the December meeting. The intended speaker was Richard Grundy, a professional staff member of the U. S. Senate Interior Committee, whose subject was: "Energy, Environment, and the Civil Engineer." As if to underscore the timely nature of this topic, the U. S. Senate, on December 10th (the day preceding the monthly meeting) passed a sweeping energy conservation bill which would put into effect a program to curtail energy use both in the public and private segments of the economy. As a result of this action it was imperative that Mr. Grundy remain in Washington to help coordinate the Senate bill and a similar bill developed in the House of Representatives. This, in addition to the energy crisis, created a speaker crisis for the Philadelphia Section.

The T. & U.D. group showed their resourcefulness and ability to roll with the punches by securing, with less than one day's notice, two very capable substitute speakers who themselves displayed very impressive credentials in the energy field. They were: Richard Daniels, Consultant, Day & Zimmerman Consulting Services, and J. Theodore Robb, Engineer, Phila. Electric Co.

Vice President Quinn Substitutes

Last-minute substitutions appeared to be the order of the day at this meeting. Vice President Alfred O. Quinn conducted the pre-meeting Board of Directors conference and chaired the general meeting with competence and authority. He was pinch-hitting for Section President Robert O. Drange, who was called out of town on company business.

U. of Pa. Honored

The meeting feted "University of Pennsylvania Night." Professor Sidney Shore, Head of the Department of Civil and Urban Engineering, spoke briefly on the renaissance of civil engineering at Penn. As of July, 1973, civil and urban engineering, together with seven other engineering branches, have been incorporated into the College of Engineering and Applied Science. The ambitious programs envisioned by Dr. Shore encompass not only the standard C. E. curricula studies, but also a broad-based research and practice context, including meaningful technical coordination and council with appropriate City

and State agencies (City Planning, Architecture, Transportation, Housing, etc.) on major urban programs.

Dr. Shore introduced Penn faculty, alumni, ASCE Student Chapter officers and members—a total of over 50 of whom were in the audience.

McCall Presents Award to U. of P.

ASCE National Director, District 4, John E. McCall, presented to Penn's Student Chapter a plaque honoring the group on its 50th Year Golden Anniversary. Phila. Section Director and Associate Contact Member for the U. of Pa., Kenneth J. Zitomer, and Lyman Smith, President of the Student Chapter, accepted the award.

Pierce Excerpts Grundy Speech in Paraphrase

Program Host Ira N. Pierce, Chairman of the Transportation and Urban Development Group, highlighted segments from Mr. Grundy's proposed talk. As Mr. Grundy sees it, the key to survival in these crisis times lies in the formulation of an effective, comprehensive National Energy Policy which can serve as a precedent for resolving broader public policy issues including land use, transportation, and housing. He feels that we must establish as a national goal a self-sufficient energy capability while retaining a high level of environmental quality. Mr. Grundy conceded that long-term solutions would require substantial social changes and that necessary conservation measures would mean greater costs to the consumer and a decrease in national growth.

Mr. Grundy's paper developed at length the critical subject of conservation of our environmental resources for ourselves and future generations. Public works, private development and industry cooperation and coordination of policies and practices are essential and indispensable. Corollary elements requiring prime re-evaluation and consideration are: the inter-relationships among the urgencies of national security, balance of payments economics, environmental requirements, and the exigencies of social change.

Comments by Messrs. Daniels and Robb

Mr. Pierce introduced Dick Daniels, an experienced engineer in the petrochemical field. Mr. Daniels emphasized that the per capita consumption of oil has been doubling every 15 years. He noted that some relief would come from the burning of coal and high sulphur fuels but these, in turn, would have adverse ef-

fects on the environment. He stated that in his opinion the big question which had to be resolved was that of priorities—that is, we must decide to what use we wish to put our available energy supplies.

Mr. Pierce then introduced Ted Robb, who gave a slide presentation which pictured many of Philadelphia Electric Company's present and proposed energy plants. Mr. Robb explained that many of these plants burn oil and that there is some question as to whether they will be able to obtain as much as they need in the coming years. While there are large known supplies of coal, Mr. Robb noted that the coal industry is apparently having difficulty gearing up to handle the increased demands. This is illustrated by the fact that PECO is presently burning their coal reserves faster than they are being replenished.

Mr. Robb noted that their Limerick nuclear power station would be a great aid in minimizing the power shortage. This plant was scheduled to begin con-

PHILADELPHIA SECTION AMERICAN SOCIETY OF CIVIL ENGINEERS

Officers 1973-1974

PRESIDENT
Robert O. Drange
VICE PRESIDENTS
Alfred O. Quinn Robert M. Koerner
SECRETARY
Celestino R. Pennoni
ASSISTANT SECRETARY
Ira N. Pierce
TREASURER
Theodore Davis
MEMBERSHIP SECRETARY
Harvey R. Cohen
DIRECTORS
Will M. Heiser Kenneth J. Zitomer
Richard E. Hubbell John H. Leapson
John J. Coscia
Joseph R. Syrnick
(from Associate Member Forum)
Robert F. LeMassena
(from Trenton Branch)
PAST PRESIDENTS
Bruno J. Talvacchia Lawrence M. Moy
John E. McCall

PUBLICATIONS COMMITTEE

Sidney Robin,
Chairman and Editor of THE NEWS
Staff Writers:
Will M. Heiser Joseph R. Syrnick
Associate Member Forum News Editor:
Richard E. Daniels
Publications Coordinator:
Albert M. Tantalà
Advertising Manager:
Joseph M. Cervone

**COPY DEADLINE FOR
FEBRUARY 1974 ISSUE
JANUARY 19, 1974**

struction in 1970 but has been entangled in controversy since it applied for construction permits. At present it is four years behind schedule with the environmental hearings just beginning.

In witty, amusing, albeit sharply punctuated accents and critiques (which your editor regrettably expunges from this review in order to circumvent possible misconstrual or embarrassment to the speaker or his company) Mr. Robb described the great difficulties attendant on the conversion to coal of existing and now-under-construction or planned energy-producing plants designed to be fueled by oil. He recited how the collateral issues engendered by the restrictions and limitations of crude oil allocation further aggravate the crisis. As if this were not enough—the acute production problems and environmental obstacles in coal mining make almost indeterminable with any degree of precision a prediction of energy capacity for the future.

In conclusion, Mr. Robb admitted that the future was not encouraging and that strong measures would have to be taken against the least efficient uses of energy—one of which is transportation. He is not optimistic that the immense problem will be solved without trial and tribulation. Above all cooperation and understanding by the consuming public is absolutely imperative.

The discussion was followed by an active question and answer session. As is to be expected at this point in the energy emergency, there could not be many positive or definitive answers to the nagging, persistent questions of how the coming "standoff" or "trade-off" between the needs of the American economy, the environmentalist petitions, and the available resources and productive capacity in solid and liquid fuels, will be resolved. Assuredly, however, the ingenuity and expertise of the scientific and engineering community will rise to the challenge. There can be no other tolerable alternative.

We congratulate program host, Ira Pierce, and Transportation and Urban Development Group Secretary Louis W. Petulla, for putting together such an interesting and timely meeting, particularly in the face of the trying circumstances. Special thanks are extended to our speakers for their very enlightening presentations. The Section was indeed fortunate that two men so eminently qualified and well-versed in the energy field volunteered their service on last-minute notice.

ASSOCIATE MEMBER FORUM NEWS

December Luncheon Meeting

On December 6th, the Associate Member Forum hosted a luncheon meeting which featured Mr. Ron Thompson, an historian employed by the National Park Service, who spoke on the subject, "Restoration of Independence National Historic Park."

Mr. Thompson opened his presentation by reviewing the park setting in conjunction with the 20th century activities of a large metropolitan area. He explained that the Park Service had accelerated its long range restoration plans to accomplish as much as possible prior to the Bicentennial Celebration in 1976.

The most intriguing aspect of the meeting involved the discussion of the techniques used to re-create an original setting—that is, to determine as nearly as possible how a building or room looked at the time of the signing of the Declaration of Independence. It was interesting to note that Independence Hall had undergone at least seven renovations prior to the involvement of the National Park Service. None of these, however, made any attempt to restore the facility to its original condition.

Mr. Thompson noted that several buildings are being restored at the present time and should be open to the public some time next year.

At the conclusion of Mr. Thompson's talk, Mr. Nick Gianopolis a structural engineer involved in many of these projects discussed some of the unique structural problems which are encountered in this type of project. The AMF would like to thank Messrs. Thompson and Gianopolis for a very interesting and unique presentation and commends Dennis Mohan for his efforts in setting up the program.

Award Nominations Solicited

The AMF is seeking nominations for the **Edmund Friedman Young Engineer**
(continued on page 6)

SOIL MECHANICS AND FOUNDATIONS ACTIVITIES

Following the stimulating presentation on "Embankment Construction on Soft Ground" by Prof. Charles C. Ladd of M.I.T. at the November 13 Section meeting, the Soil Mechanics and Foundations Group has scheduled a series of technical programs on "Soft Soil Engineering." Topics to be covered in this program will be of particular benefit to engineers faced with planning and designing facilities on the marginal land around our urban area. The program planned is:

January 15 — "Sand Drains and Vibroflotation"

James Warren — Manager,
Sand Drains Division

George O. Reed — Vice President
Vibroflotation Foundation Company
Pittsburgh, Penna.

February 19 — "Site Preloading"

Donald L. York — Engineer of Soils
and Foundations
Port Authority of New York and
New Jersey.

March 19 — "Building Foundations on Bay Mud"

Carl W. Garbe, Partner — Dames and
Moore, San Francisco, Calif.

April 16 — "Soft Soil Behavior"

Melvin I. Essig, Vice President
Woodward, Moorhouse and Assoc.
Clifton, New Jersey

The meetings will be at 7:00 P.M. at the Engineers' Club and Refreshments will be provided. Come and learn about some of the methods of coping with difficult foundation conditions.

Proceedings Available

Soil Mechanics and Foundations Technical Group of Phila. Section ASCE is proud to announce its 3rd annual Proceedings. This 400 page volume is on the topic of "Shallow Foundations" and contains five complete papers and a panel discussion of the subject which was the topic of last year's program under the direction of Cetin A. Okcuoglu of Geotech Inc.

Cost per volume is \$10.00 and it can be ordered through S. M. & F. Group Vice Chairman Alfred McClymont Geotech, Inc., 6705 Park Ave., Pennsauken, N. J. 08109.

Check may be made payable to Mr. McClymont or to Soil Mechanics and Foundations Group, Phila. Section ASCE.

Soils Analysis & Foundation Engineering Co. Consulting Engineers

Civil, Soils and Foundation Engineering;
Site Investigation, Analysis & Reports;
Ground Water & Drainage Study;
Design and Engineering Supervision

Philadelphia, Pa. (215) PE 5-5909
Cherry Hill, N. J. (609) 667-9675

Dalim K. Majumdar, Ph.D., P.E. Principal

CONSTRUCTION CAREER DAY DRAWS RECORD CROWD

The Thirteenth Annual Construction Career Day, designed to give students in junior and senior high school a closer look at the wide range of industry career opportunities, was held at 9:00 A.M., Saturday, November 3, 1973, at the Franklin Institute. More than 800 junior high and high school students attended, a record for the annual event.

Career Day is jointly sponsored by the Philadelphia Chapters of the American Institute of Architects and the Pennsylvania Society of Professional Engineers; the Philadelphia Section, ASCE; and the Industry Advancement Program, administered by the General Building Contractors Association, Inc. (GBCA); in cooperation with the Franklin Institute, and is the only one of its kind in a major city in the United States.

The program took students inside the world of construction, beginning with a slide presentation entitled "Careers in Construction." Further insights into the industry were provided through a film on the "Building of the World Trade Center," produced by the New York Port Authority.

A panel of industry experts, moderated by Charles McBride, Director of Industry Relations at GBCEA, was available to answer questions and talk informally with students. Here, all principal elements in the construction industry; architects, engineers, contractors, legal and management personnel, building materials manufacturers and suppliers, educational institutions, and owners combined their talents to inspire interest in young people to pursue careers in the construction industry.

Exhibits featuring additional information on all aspects of the industry were on display in Franklin Hall. Students attending Construction Career Day were invited to be guests of the sponsors for the Penn-Harvard Football Game at Franklin Field in the afternoon, or to tour Franklin Institute as special guests.

The affair received wide press and television coverage. It was hailed as an outstanding success.

**Have You Mailed In Your
1974 Dues Check?
If Not, Please Do So NOW!**

A MESSAGE FROM DEAN RUMPF

Practicing Engineer/Teachers Sought

The College of Engineering Technology, Temple University, is interested in contacting practicing engineers who would like to participate in the instructional effort of the College as "professors of engineering practice" in day and/or evening degree and continuing education programs. Contact Dean John L. Rumpf (787-7959) and send resumé's to him at Stauffer Hall, Temple University, Phila., Pa. 19122.

Book Donations for Library

Dr. John L. Rumpf, Dean of Temple University's College of Engineering Technology reports that the growth of their Technology Library has been accelerated recently by the donation of a sizeable number of books and journals by practicing engineers. If you have up-to-date books in any of the subfields of civil engineering, architecture, or other fields of technology that you wish to contribute please contact Dean Rumpf (787-7959). A list of the books you have will be helpful. The College of Engineering Technology is not interested in old volumes.

Slides of projects, construction methods and construction details are also desired.

ASCE PUBLICATIONS AVAILABLE

Each year ASCE members are entitled to receive, free of charge, 100 individual Proceedings Papers. The papers cover a wide range of technical subjects and should be of interest to all practicing engineers. For your convenience a listing of available papers is published in each issue of "Civil Engineering" magazine. The listing includes a brief abstract of each paper and a tear-out order coupon. Associate Members are urged to make use of this membership benefit.

SPRAGUE & HENWOOD, INC.

Foundation Investigations - Soil Testing and
Test Borings - Grout Hole Drilling and
Pressure Grouting - Diamond Core Drilling

Philadelphia, Pa.

(215) 735-6774

Bridgeport, N. J.

(609) 467-1800

Foundation to roof in 23 days! . . . Formigli Stack-wall System.

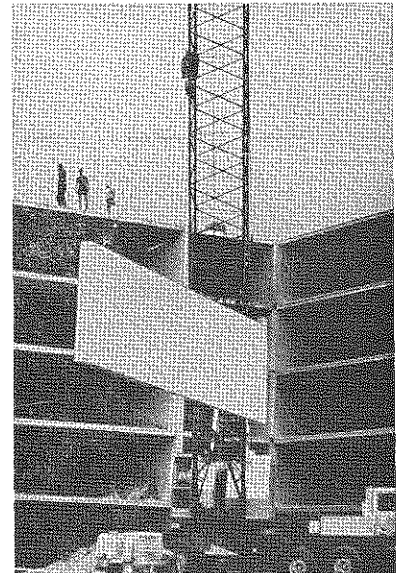


Figure the savings for yourself . . .

23 working days to erect the Formigli Stack-Wall system of hollow core floor and roof slabs and precast concrete walls of six stories, 361 rental units at an estimated time saving of four months, resulting in reduced interest and ground rental, lower general contracting costs, additional days of rental and other income. Easy coordination of mechanicals. Smooth precast walls are ready to accept paint or vinyl paper. Hollow core slabs receive carpet direct, and ceilings are painted.

Formigli has a film slide presentation for interested groups. It can be tailored to fit your time schedule: Call:

FORMIGLI CORPORATION

P. O. Box F, Berlin, New Jersey 08009
West Coast: Upland, California 91786
Phila. Phone: 215-561-0505
Berlin Phone: 609-767-1111

ENGINEERS' WEEK PLANS ANNOUNCED

Louis T. Klauder, managing partner in Louis T. Klauder and Associates, Philadelphia consulting engineers, has been named general chairman for 1974 Engineers Week observances in Delaware Valley. Klauder was honored in 1973 as Engineer of the Year, it was announced by William H. Johnson, President of the Philadelphia Chapter PSPE. Johnson, at the same time, announced the appointment of sub-committee chairmen and members of the committee.

The 1974 observances will be held Feb. 17-23 in conjunction with National Engineers Week which will focus attention on the energy crisis. In 1973, the Delaware Valley program was centered on transportation and Klauder was honored for his work in mass transit.

The national and Delaware Valley programs will feature high school conferences, exhibits on engineering achievements, guidance counseling seminars on engineering careers, guided tours of industrial plants, talks by engineers before student and civic groups on the theme, "Engineering—Our Greatest Energy Resource" and the selection of the 1974 Engineer of the Year.

Phila. Section members serving on Engineers Week subcommittees include: **Lewis A. Caccese**, chief of operations, U. S. Army Engineer District, Chairman of Speakers and Special Events; **Robert J. Fisher**, Hudson Engineers, Inc., Chairman of Engineer-of-the-Year committee; **Leo Goldstein**, chief of field operations, Philadelphia Dept. of Licenses and Inspections, Chairman of Fund Raising Committee; **John H. Leapson, Jr.**, TEI Consulting Engineers, Inc., Industry Displays; **Noble T. McHugh**, Philadelphia Electric Company, Committee Secretary, and **George R. Beetle** of Louis T. Klauder and Associates.

(Editor's Note: It has been announced that Lewis A. Caccese, prominent member of the Phila. Section ASCE, has been named 1974 Engineer-of-the-Year.)

WOMEN'S AUXILIARY

As announced previously in THE NEWS, the Phila. Section Women's Auxiliary will not meet in January or February, 1974. The next regular monthly Luncheon-Meeting will be held at the Engineers' Club on Wednesday, March 20, 1974 at 12 noon. It will be a combined Auxiliaries meeting. The March, 1974 issue of THE NEWS will carry details of the meeting.

Please read the December, 1973 issue of THE NEWS regarding the important membership drive the Women's Auxiliary is now conducting.

Christmas Party Enjoyed by All

In spite of inclement weather, the Section's Women's Auxiliary held their Annual Christmas Party at the Engineers' Club on Wednesday, Dec. 19, 1973. All who attended enjoyed a very pleasant party. Pollyannas were exchanged and good-fellowship abounded. THE NEWS and the Section congratulate the ladies on their successful year-end event.

Appropriated from the Winter, 1973 edition of THE SECTION LEADER:

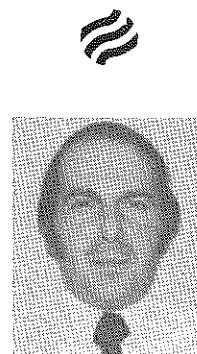
No man who hates the metric system would touch it with a 3.049 meter pole.

CIVIL ENGINEER PROJECT MANAGER

Our client offers an excellent opportunity for a New Jersey licensed Project Engineer with 5 to 10 yrs. experience in highway construction projects. You should know contracts and be implementation oriented. The assignment is in Central New Jersey. Salary in the 20K range. Contact H. A. Brelsford, P.E. No Fee.

MBH Associates, Inc.
1616 Walnut St. Phila., Pa. 19103
(215) 735-7060

SECTION PROFILES



Mr. Harvey Cohen

He's a big guy; and yet, notwithstanding years of dedicated work on behalf of the Philadelphia Section, he has been out of the direct line of sight of most members. Quietly and persistently, Harvey Cohen has shouldered

the heavy duties, never shirking on a request or an assignment to do the chores necessary to make ASCE click. Look at the list:

For several years, Harvey was Chairman of the Reception Committee. Here he coped with the entangling mechanics of arranging and classifying dinner reservations for the Section's meetings and acting as general host to make members' and visitors' evenings comfortable and enjoyable at many functions. Harvey is a Past President of the Associate Member Forum, and he served a two-year term as Section Director. When THE NEWS established an advertising policy two years ago, he served until recently as Chairman of the newsletter's Business Affairs Committee. He has been a member of many other committees and groups, and he has accomplished effectively many special missions for the Section. Currently he holds the office of membership Secretary—surely one of the most agonizing and punitive jobs ever conjured up my man!

Harvey Cohen is active—in addition to ASCE—as a member of the Association of Iron and Steel Engineers (AISE); and PSPE, where he is a member of the Board of Directors and Chairman of the Public Relations Committee.

This month's "Profiles" hero attained
(continued on page 6)



HUDSON ENGINEERS, INC.

Professional Engineers & Consultants

Supports the Goals and
Activities of A.S.C.E.

Telephone 215-735-5131
121 S. BROAD STREET
Philadelphia, Pa. 19107

A. W. MARTIN Associates Inc.

Consulting Engineering Services for:
Pollution Abatement and Control
Environmental Systems:
Wastewater — Solid Waste
Highways - Transportation - Traffic Control
Land Planning - Structures - Surveying
Feasibility - Analysis - Design -
Presentation - Implementation
900 W. VALLEY FORGE RD.
King of Prussia, Pa. 19406
P.O. Box 190 (215) 265-2700

JUSTIN & COURTNEY Consulting Engineers

Water Supply, Reservoirs, Flood Control
Drainage, Irrigation, Dams,
Hydroelectric Power, Pumped Storage
Planning - Reports - Design - Inspection

226 W. Rittenhouse Square
Philadelphia, Pa. 19103
(215) 546-5504

SECTION PROFILES

(continued from page 5)

his B.S.C.E. in 1963, and four years later an M.S.C.E., at Drexel University. He is a registered Professional Engineer in Pennsylvania, Kentucky, and West Virginia. In 1965 he became accredited as a Certified Fallout Shelter Analyst. Harvey joined his present firm, United Engineers and Constructors, in 1964 as a Structural Designer after two years with the Philadelphia Dept. of Public Property as Inspector. At United Engineers he has advanced steadily, to his current post of Structural Supervising Engineer, to which he was appointed in 1969. His work involves principally new plants and expansions for major steel producers and fabricators (Bethlehem, Inland, Lukens, etc.), International Nickel Co., and others.

Harvey resides in Northeast Philadelphia with his bride Cathy. He is also the father of two sons: Barry, 7 and Joel, 5.

The success of most organizations, social or professional, usually focuses within and radiates from a core of generous, devoted individuals. Harvey Cohen is physically a tall man. He also stands tall within that core. We are fortunate and grateful at the Phila. Section, ASCE, that this modest, hard-working young man is one of us.

AEROSPACE COUNCIL
REQUESTS HELP

ASCE National Technical Council on Aerospace is asking for information and data concerning the use of remote sensing techniques.

The Council is collecting this information as a part of their continuing efforts to coordinate the activities of ASCE with other space-oriented agencies and professional organizations.

Answers to the following questions and related areas are INVITED:

- * What problems are presently being solved by the use of remote sensing?
- * What are the critical parameters, criteria, etc., etc.?
- * What are the Section/Branch/member plans regarding activities in this important "remote sensing" subject area?

Please forward any and all information to ASCE, Field Services Department, 345 E. 47th St., New York, N.Y. 10017, for appropriate dissemination to the Council.

TRENTON BRANCH

The January meeting of the Trenton Branch of the Philadelphia Section will be as follows:

Date: January 15, 1974.

Subject: Construction of Interstate Route 295 in the Trenton wetlands. Various aspects of the Corps of Engineers involvement in the project consists of dredging the Delaware River channel and depositing the material on the wetlands to construct the highway embankment.

Speaker: Mr. Thomas Schina, Corps of Engineers, Philadelphia, Pa.

The meeting will be held at the Glendale Tavern, 48 New Hillcrest Avenue, Trenton, New Jersey. The Glendale is located near the junction of Parkside and Pennington Avenues in Ewing Township, New Jersey. Fellowship hour starts at 6:00 P.M., dinner at 6:30 P.M. and the meeting at 7:30 P.M. Philadelphia Section members, wives, and guests are cordially invited to attend. A free dinner is given away to one lucky person, and in addition, all Princeton University Student Chapter members in attendance will have one-half the meal cost paid for by the Trenton Branch. For reservations please call Secretary-Treasurer, Ronald B. Rulon at (609) 883-9500, Extension 265. Those unable to attend dinner will be most welcome to join the group for the speaker's presentation.

IMPORTANT STATISTICS

The compilation of the 1972 Section Annual reports is off the press.

Highlights . . .

- * 57% of members assigned to Sections paid Section dues.
- * \$5.25 is average Section dues amount.
- * 7 Sections reported income from advertising.
- * Section Newsletters cost an average of \$1012.58 per year per Section to serve an average of 764 assigned members of 438 Section dues paying members.
- * 17 Sections report having a Scholarship Program.
- * 12 Sections conducted Educational Courses.
- * \$634.15 is the average Section expense for Secretarial Services.
- * 22 Sections report publication of a Section Yearbook.
- * A total of 50 joint meetings with Student Chapters was reported for the 1971-1972 Section Year.
- * 25 Sections provided student paper contests and prizes.

TECHNICAL GROUP
ACTIVITIES

Soil Mechanics & Foundations Group

Meeting: January 15, 1974

See separate article: "S M & F Group Activities," page 3.

Transportation & Urban Development Group

January Luncheon Meeting:

Thursday, January 10, 1974.

Engineers' Club, 12:00 noon sharp.

Subject:

Transportation for the Philadelphia 1976 Bi-centennial Celebration.

Speaker:

William Grabsky, Director, Transportation Planning Group, Philadelphia '76 Corporation.

Cost of the buffet luncheon is \$1.95.

Please make reservations in advance by calling Miss Joan at LO 7-3000, Ext. 41.

AMF NEWS

((continued from page 3))

Award for Professional Achievement.

There are no formal nomination form for this award. Each nominating body, whether an individual, Section, or AMF is requested simply to submit whatever information it feels is pertinent to describe adequately its nominee's contribution to the profession. This may include academic work, professional involvement, and participation in public service outside the profession. Seven copies of the material should be submitted to:

Joseph Syrnick
920 Municipal Services Building
Philadelphia, Pa. 19107

Since the deadline for all nominations is February 1, 1974 we request that you submit the material by January 20th.

XDITOR'S CORNXR

Xvxn though my sxerxtary's typx-writxr is an old onx, it works quitx wxll —xxcxt for onx kxy. It is trux that thxrx arx forty-onx kxys that function wxll knough, but just onx kxy makxs a diffxrxn. You may say to yoursxlf, wxll, I am only onx pxrxon; what I do won't makx or brxak a program. But it doxs makx a diffxrxn! Any Sxction, Branch or Txchnical Group program nxxds activx support and cooprxation in ordx to bx xfxctivx. So thx nxxt timx you think you arx onx pxrxon and your xfforts arx not nxxdxd, rxmxxm-brx my sxrxtary's typxwritxr and say to yoursxlf, "I am a kxy pxrxon in this organization and my support is nxxdxd."