

# the news

PHILADELPHIA SECTION



AMERICAN SOCIETY OF CIVIL ENGINEERS

VOL. 46 - No. 5

Our 61st Year

FEBRUARY, 1974

## FEBRUARY MEETING

Philadelphia Section, American Society of Civil Engineers

**TUESDAY, FEBRUARY 12, 1974**

Engineers' Club, 1317 Spruce Street, Philadelphia

Cocktails — 5:30

Dinner — 6:30

Meeting — 7:30

### SUBJECT:

**SHEETING, SHORING AND UNDERPINNING**

### SPEAKER:

**ROBERT E. WHITE**, President, Spencer, White and Prentis, Inc.,  
New York, N. Y.

### PROGRAM HOST:

**JOSEPH P. WELSH**, District Manager, SOILTECH Department, Raymond  
International, Inc. Mr. Welsh is Chairman of the Phila. Section's  
Program Committee.

The broad nature of the subject of this meeting, and the engagement as speaker of a principal of one of the world's foremost contractors on remedial foundations and soil mechanics engineering, promise an excellent meeting. Among the notable jobs completed by Mr. White's firm—and which will be discussed—are: underpinning and shoring of the White House in 1950; foundation work for the giant World Trade Center complex in New York, the Sears Tower in Chicago, the Bay Area Rapid Transit System (BART) in San Francisco, and others.



Robert E. White

A B.S.C.E. degree graduate of Harvard Engineering School in 1934, Robert E. White has worked for SW & P in various capacities since graduation, from Job Engineer to President. Of his many jobs, including locks and dams, city subways, cofferdams and caissons, and the like, Mr. White considers his most notable one Project Manager on the 1950 White House job.

He has authored many articles for technical magazines and wrote a chapter on "Caissons and Cofferdams" for a Foundation Engineering textbook. He was awarded the A. P. Greensfelder Construction prize for a paper published in CIVIL ENGINEERING magazine in 1964, entitled "Pretest Tie-backs and Drilled-in Caissons."

He holds patents as an inventor of Pretest Tie-backs, and is in demand as a lecturer at engineering schools and technical societies' forums. Mr. White has held many ASCE official positions, and he is particularly active in the Metropolitan Chapter of New York, his native city. He is a member of the Prestressed Concrete Institute's Committee on Soil and Rock Anchors, and belongs to other technical groups. He holds a Professional Engineer License in the States of New York, Illinois, Virginia, California and the District of Columbia.

## FEBRUARY MEETING

### HIGHLIGHTS

#### WIDENER and SWARTHMORE

The Widener College and Swarthmore College Civil Engineering Departments will be featured at the February 12, 1974 meeting of the Phila. Section. Professor Frederic Roll, the Section's Chairman of the Student Chapters Committee, has asked the Faculty Advisors: Professor George N. Bathish, Widener; and Professor M. Joseph Willis, Swarthmore, to extend invitations to Civil Engineering faculty, alumni and students to attend the meeting.

Dr. Roll has forwarded to each school four complimentary dinner tickets, to be given by the Faculty Advisors to selected Student Chapter members. Professors Bathish and Willis will be called upon at the meeting for brief remarks about civil engineering activities at their respective colleges.

## MEMBERS IN THE NEWS

Maynard Charles Nugent, now Director of Engineering for the New Jersey Heavy and Highway Construction Industry Advancement Fund, will present a paper entitled "How a Construction Industry Organization Provides Educational Opportunities" at the ASCE Conference in Civil Engineering Education, Feb. 28 - Mar. 2, 1974, at Ohio State University. Participation in the Construction Technology Program is encouraged through scholarships, tuition reimbursement and granting certificates for satisfactory completion. Students become proficient in construction techniques and management at schools all over the State of New Jersey.

(Continued on page 3)

### Free Beer and Refreshments at the Meeting

Mail Reservation Cards Immediately—Win a FREE DINNER!

STUDENTS — Plan to attend for Dinner (Half Price) or meeting after Dinner

## JANUARY MEETING

January 8, 1974

Engineers' Club

(Editor's note: THE NEWS staff is indebted to Dr. Carl M. Koch, Secretary/Treasurer of the Hydraulics and Sanitary Group, for his assistance in the authorship of the following summary. Portions of his astute and penetrating analysis of Mr. Meyers' presentation have been incorporated in the article.)

The Philadelphia Section continued at the January meeting its extraordinary string of near capacity attendance. A total of over 200 members, guests, and Drexel University Civil Engineering School personnel (the meeting was dedicated as "Drexel Night") attended. The Hydraulics and Sanitary Group, under the energetic chairmanship of Gerald M. McDonnell, arranged the splendid meeting, on the subject: "Environmental Impact Statements." The principal speaker was Mr. Sheldon Meyers, Director, Office of Federal Activities, Environmental Protection Agency, Washington, D. C. Mr. McDonnell, the very capable Program Host of the meeting, demonstrated his adventurous spirit by securing, in his authoritative speaker, on the controversial subject.

### Drexel Feted

It was "Drexel University Night," in keeping with Section policy of spotlighting the Civil Engineering schools and ASCE Student Chapters of Philadelphia area colleges. About 100 strong were present, including faculty, graduate and undergraduate students, and alumni of the Day and Evening Colleges. They were introduced by Dr. Robert M. Koerner, Section Vice President, Associate Professor of Civil Engineering, and Faculty Advisor for the Drexel Student Chapter.

Dr. P. Walton Purdom, Chairman of the Civil Engineering Department, spoke briefly on the reorganization (or "reversion," really) of the Drexel Engineering College into the Departmental structure of the specialty branches (Civil, Mechanical, Electrical, etc.); the co-operative work-study program; the encouraging signs of stabilized or increasing enrollment (57 senior Civils and more than 80 freshmen this year). Important new courses of specialized undergraduate and graduate scholarship recently established include: Engineering Management, Urban Planning, and Transportation Engineering. In Prof. Purdom's words: "... at the Drexel C. E. Department, we're working on the

frontiers of a new and advanced civilization . . ."

### Student Chapter 50-Year Award

On behalf of National ASCE, District 4 Director John E. McCall presented a Certificate to Drexel University's ASCE Student Chapter, honoring it for 50 years as an effective ASCE affiliate. A selected committee of distinguished Drexelians were called from the audience to accept the award. An especially noted Committee member was Dr. LeRoy A. Brothers, retired Dean of Drexel's College of Engineering. Dean Brothers maintains a keen interest in Drexel Civil Engineering progress and active participation in Philadelphia Section affairs.

### Mr. Meyers' Address

Principal speaker, Mr. Sheldon Meyers, Director of Federal Activities for the U. S. Environmental Protection Agency, outlined the important issues contained in the National Environmental Policy Act (NEPA). Two of the most important accomplishments of this act were (1) the requirement that all National Agencies consider the environmental aspects of specific projects as well as the technical and economic considerations, and (2) the creation of the Council on Environmental Quality (CEQ) to insure the implementation of the Environmental Impact Statement Program and to advise the President.

The most well-known portion of NEPA is Section 102(2)(c) which requires the preparation of an Environmental Impact Statement. The EIS must contain a detailed discussion on the environmental impact of a project, an account of the adverse effects which cannot be avoided in the implementation of the project, and an explanation of the alternatives (including the null or do-nothing alternative) to the project.

In elaborating on these key issues of Section 102(2)(C) of the Act, Mr. Meyers explained that on occasion evaluations are made in which some environmental degradation might be inevitable—as in the Trans-Alaska Pipeline. But other conditions, as in this case the energy crisis, prevail.

Mr. Meyers emphasized that no project has ever been stopped due to adverse environmental effects. Rather, projects are halted or suspended due to the failure to properly complete the EIS. He stressed that ecological issues were only one consideration in the overall evaluation process and that potential adverse environmental impacts would not necessarily result in a project being scrapped. These adverse effects, or costs,

could simply be considered as a trade-off against whatever benefits could be expected to accrue for implementation of the project.

Mr. Meyers explained that one major goal of NEPA is to build a routine environmental concern into the evaluation and decision making processes. He noted that because of the EIS requirement, many projects have been modified to make them more socially acceptable without significantly affecting other aspects of the construction.

A very important factor pointed out by Mr. Meyers was that NEPA does not require any specific group or agency to approve impact statements. The agency issuing the statement has full responsibility and authority to act as it sees fit to the comments received on the statement which it issues. However, any citizen or group can question the adequacy and thoroughness of a statement and appeal to the courts on the grounds that a statement does not fulfill the NEPA requirement. Recent court actions have established a precedent for expanding the environmental impact requirement of NEPA to include socio-economic effects of projects.

## PHILADELPHIA SECTION AMERICAN SOCIETY OF CIVIL ENGINEERS

### Officers 1973-1974

#### PRESIDENT

Robert O. Drange

#### VICE PRESIDENTS

Alfred O. Quinn Robert M. Koerner

#### SECRETARY

Celestino R. Pennoni

#### ASSISTANT SECRETARY

Ira N. Pierce

#### TREASURER

Theodore Davis

#### MEMBERSHIP SECRETARY

Harvey R. Cohen

#### DIRECTORS

Will M. Heiser Kenneth J. Zitomer

Richard E. Hubbell John H. Leapson

John J. Coscia

Joseph R. Synchron

(from Associate Member Forum)

Robert F. LeMassena

(from Trenton Branch)

#### PAST PRESIDENTS

Bruno J. Talvacchia Lawrence M. Moy

John E. McCall

#### PUBLICATIONS COMMITTEE

Sidney Robin,

Chairman and Editor of THE NEWS

Staff Writers:

Will M. Heiser Joseph R. Synchron

Associate Member Forum News Editor:

Richard E. Daniels

Publications Coordinator:

Albert M. Tantalala

Advertising Manager:

Joseph M. Cervone

**COPY DEADLINE FOR  
MARCH, 1974 ISSUE  
FEBRUARY 19, 1974**

Mr. Meyers cited cases in which the courts have interceded—often drastically—in favor of Impact Statement importance and influence. These cases involved such major projects as offshore oil-drilling; nuclear-energy plant location and developmental qualifications; federal prison construction; and others. He praised the Environmental Protection Agency as a viable and necessary temporizing force in innumerable controversies having to do with the environmental impact of resources exploration and development projects in the United States.

### The Audience Fires a Barrage of Questions

Our speaker's formal talk was followed by a spirited and at times dramatic question-and-answer discussion period. In reply to several questions on a common theme, Mr. Meyers explained how guidelines recently promulgated by his agency discharge mandated jurisdictional authority; and implement technological mechanisms to avoid or control potential environmental regression or danger. He forthrightly addressed the evident concern expressed by the many public works administrators, planning officials, and consultants in the audience regarding the effect on project timing and delays caused by NEPA regulations. In his replies, Mr. Meyers carefully avoided the politically explosive elements of proposed exemptions to EPA restraints and restrictions.

It was apparent from the dialogue which ensued that many engineers would favor modifying the act to make it less subjective and more specific. Leo Goldstein, former Philadelphia Commissioner of Streets, pointed out that there exist no procedures for appealing the comments and opinions of the agencies reviewing an environmental impact statement prior to court action. Since a court action can delay a major project for years, it may bring "defacto" termination of a project. Some members questioned whether the current energy crisis may bring about extensive waiving of the requirements for impact statements to expedite solution of the energy crisis. Mr. Meyers responded that he does not anticipate extensive waiving of requirements, but that certain cases involving the energy crisis may warrant such action.

There is no definitive line, Mr. Meyers' comments indicated, where the jurisdictional authority of environmental control agencies—including E.P.A.—is absolute or irrevocably drawn. Nor, to be sure, is there clear-cut definition of ad-

ministrative, congressional and judicial zones. Speaker and audience boldly dissected jurisdictional and legislative interpretations of conflicts inherent in the federal environmental bureaucracy.

Mr. Meyers handled the questions with courage and candor, and demonstrated strong support of the NEPA and the environmental impact statement. He expressed regret that the review process had caused long delays in certain projects and indicated that the EPA has increased their staff. He regards any amendments of the act as unlikely at present. Mr. Meyers concluded by stating that NEPA has brought about an environmental consciousness to the federal agencies and that the environmental impact statement is evolving from an annoying encumbrance into an important decision-making tool.

Section President Robert O. Drange presented Mr. Meyers a Certificate of Appreciation at the conclusion of the meeting.

Special commendation is due Program Host Gerry McDonnell and the entire Hydraulics and Sanitary Group for putting together this timely and interesting meeting.

### MEMBERS IN THE NEWS

(Continued from page 1)

Philadelphia Section Past President **William Padlasky**, Partner in the consulting firm of Schulez and Padlasky, has been appointed to the faculty as a Professor of Engineering Practice in the Temple University College of Engineering Technology, it has been announced by Dr. John L. Rumpf, Dean of the College. Mr. Padlasky will teach a basic course in reinforced concrete and structural steel design to third-year students. This is the first course in design of the type to be established since the College of Engineering Technology was created four years ago under Dr. Rumpf's direction.

(Editor's Note: Please refer to a featured article: "A Message from Dean Rumpf" in the January, 1974 issue of THE NEWS. Dean Rumpf is actively seeking other practicing engineers to join his staff. He may be reached at Temple University, Phone: (215) 787-7959).

**Albert M. Tantala**, the Phila. Section's Publications Coordinator, principal of the Consulting Engineering firm Tantala Associates, announces the opening of additional offices at 7405 Ventnor

### ASSOCIATE MEMBER FORUM NEWS

On **Wednesday, February 20, 1974**, there will be a joint meeting between the Drexel Student Chapter of ASCE and the Associate Member Forum. William Grabske of the Philadelphia '76 Corporation will speak on "Bicentennial Plans." The meeting will be held in the Drexel Activities Center (32nd and Chestnut Streets) at 7:00 p.m. All Philadelphia Section members and their guests are invited to attend. Here is your chance to learn what the plans are and to start formulating ideas for our Section's role in this great celebration.

### Metrification

The American Society of Civil Engineers gave strong support to metrification by the following resolution:

"Resolved, that the American Society of Civil Engineers will further, by all legitimate means, the adoption of the metric standards in the Office of Weights and Measures in Washington, as the sole authorized standards of weights and measures in The United States."

What is so outstanding about this resolution? Just the date. It was adopted in **August, 1876!**

Avenue, Margate, N. J. The firm specializes in design, inspection, testing, studies and reports.

**Dr. Frederic Roll**, Professor of Civil Engineering, Dept. of Civil and Urban Engineering, University of Pennsylvania, and Phila. Section's Student Chapters Committee Chairman, has been elected by the Board of Direction of the American Concrete Institute as a Fellow of that organization. The honor, limited to a very exclusive group of ACI members, is in recognition of Dr. Roll's "... outstanding contributions to the production or use of concrete materials, products and structures in the areas of education, research, development, and design . . ."

**Iraj Zandi**, University of Pennsylvania and **Carl M. Koch**, General Electric Company, published a paper "Use of Pipelines as Aerobic Biological Reactors" in the Water Pollution Control Federation Journal in December, 1973.

**Roger D. Ley**, General Public Utilities, Reading, is Chairman of the Planning and Economics Committee of the National ASCE Power Division, and has established an Energy Crisis Task Force.

## LEW CACCÈSE ENGINEER OF THE YEAR

The Phila. Section ASCE is proud to announce that one of its most favorite sons, and a former Director, Lewis A. Caccese, Chief, Operations Division, Philadelphia District Corps of Engineers, has been unanimously elected as



Lew Caccese

1974 Engineer of the Year in Delaware Valley. He will be honored during National Engineers' Week, Feb. 17-23. Mr. Caccese, who also is chairman of the Zoning Board in Palmyra, N. J., was elected by delegates of 50

engineering and technical societies in Delaware Valley. His election was announced by Louis T. Klauder, General Chairman for Engineers' Week observances in the Delaware Valley area. Klauder, a specialist in transportation facilities, was 1973 Engineer of the Year.

Lew was nominated by the Phila. Post, Society of American Military Engineers and the Phila. Section, American Society of Civil Engineers. In advocating Caccese's election, the nominators pointed out that he has devoted his career to the development of navigation in the Delaware River which serves industries employing one out of every three persons in Delaware Valley. He also utilized the National Refuse Act to halt destruction of thousands of acres of marsh lands to protect the environment. This was accomplished through court action to curb lagoon silting and housing development illegal deposit of trash, debris and solids in the navigable waterways in the Delaware Valley region. He also invented a probing device which accurately locates rock pinnacles in the river which are obstructive to navigation.

Mr. Caccese received the Distinguished Civilian Service Award from the Secre-

tary of the Army last year. This is the highest award for a civilian from the U. S. Army. He also was honored for his work in behalf of navigation and the environment by the Delaware Valley Council.

He is a registered professional engineer in New Jersey and Pennsylvania and a graduate of the College of the City of New York. He did graduate study at Brooklyn Polytechnical Institute. He lives in Palmyra, N. J., with his wife, Betty, and their five children. Mrs. Caccese is a member of the Philadelphia Section Women's Auxiliary. Lew has been for many years a dedicated member, and an effective official and advocate of the Phila. Section. We offer him our affectionate and enthusiastic congratulations for the great honor he has achieved this year.

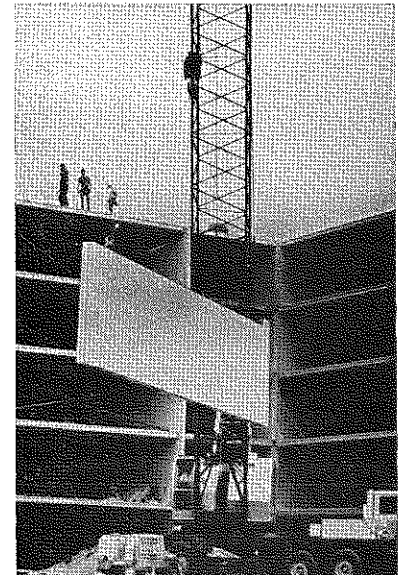
### MAIL IN YOUR SECTION DUES . . . PLEASE !!!

Section Treasurer Ted Davis reports that we are currently running considerably behind last year in receipts of annual Section dues. On behalf of the officers and Board of Directors, THE NEWS appeals to the Membership to do its share in providing the finances vital to the maintenance of the high standards of professional activities which the Philadelphia Section, ASCE has steadfastly espoused. For every member who neglects to pay his Section dues (it's only \$10.00 per year) we are additionally denied the National Society allotment of \$2.50, which National awards for each member who pays Section dues.

So . . . if you have not already done so, please make out your check right away, in the amount of \$10.00, payable to **Phila. Section, ASCE**, put it in the self-addressed stamped envelope you received with the dues bill in October, and mail it promptly. If you lost the envelope, address one to Phila. Section, ASCE, Engineers' Club, 1317 Spruce St., Phila., Pa. 19107, Attn: Theodore Davis, Treasurer. You will thus be doing your share to keep the Section financially unencumbered in its endeavors for ever-greater achievements.

Let's keep the great attendance streak going!! Come to all the remaining meetings. . . . And please . . . return your dinner reservation card promptly.

## Foundation to roof in 23 days! . . . Formigli Stack-wall System.



### Figure the savings for yourself . . .

23 working days to erect the Formigli Stack-Wall system of hollow core floor and roof slabs and precast concrete walls of six stories, 361 rental units at an estimated time saving of four months, resulting in reduced interest and ground rental, lower general contracting costs, additional days of rental and other income. Easy coordination of mechanicals. Smooth precast walls are ready to accept paint or vinyl paper. Hollow core slabs receive carpet direct, and ceilings are painted.

Formigli has a film slide presentation for interested groups. It can be tailored to fit your time schedule: Call:

### FORMIGLI CORPORATION

P. O. Box F, Berlin, New Jersey 08009  
West Coast: Upland, California 91786  
Phila. Phone: 215-561-0505  
Berlin Phone: 609-767-1111

### Soils Analysis & Foundation Engineering Co. Consulting Engineers

Civil, Soils and Foundation Engineering;  
Site Investigation, Analysis & Reports;  
Ground Water & Drainage Study;  
Design and Engineering Supervision

Philadelphia, Pa. (215) PE 5-5909  
Cherry Hill, N. J. (609) 667-9675

Dalim K. Majumdar, Ph.D., P.E. Principal

## GOLDSTEIN HONORED AT LUNCHEON

Leo Goldstein, distinguished member of the Philadelphia Section, ASCE, was honored on January 15, 1974, at a testimonial luncheon held in the Sheraton Hotel. Mr. Goldstein, Chief Administrative Engineer, Field Operations Division, Department of Licenses and Inspections, is leaving the employ of the City of Philadelphia after completing more than twenty years of dedicated service in executive positions of various public works departments. He plans to engage his professional talents in a private consulting practice.

Over 250 friends and associates of Mr. Goldstein, including City agency officials, Councilmen, Judges, Department Commissioners (past and present) representatives of professional societies, general contractors, building materials manufacturers and suppliers, attended to fete Mr. Goldstein and his lovely wife, Sybil, who sat by his side at the head table. In brief remarks of tribute, selected speakers extended warm greetings and best wishes to Leo and Sybil. Responding with a short speech, Leo graciously acknowledged the compliments of his friends, and reciprocated his warm feelings for them all. Licenses and Inspections Commissioner Clarence M. Dockens was Master of Ceremonies at the affair.

While in a sense Leo Goldstein is "retiring" from City service, he is—as several speakers affirmed in saluting him—in no sense "going out to pasture . . ." It is not in this man's constitution to disclaim association with professional and communal activity.

Mr. Goldstein's colleagues in the Department presented him with a beautiful television console as a token of their esteem. The testimonial luncheon was a colorful and memorable occasion for all who attended. We, of the Phila. Section, join all Leo's friends in wishing him and Mrs. Goldstein continued good health, happiness and fortune in all their new ventures and in their personal lives.

## CONSTRUCTION-STRUCTURAL GROUP SEPARATES FUNCTIONS

The Construction-Structural Technical Group of the Philadelphia Section ASCE has recently been reorganized into the following two groups under the leadership indicated below. Please contact them if you desire to become involved during the planning stages and formation of the respective group's programs. Those members who paid \$1.00 to belong to the combined group have been entered into both of the newly formed groups. In future years you will have a choice as to which group (or both) you desire to affiliate with.

### Construction Group

Mr. Richard J. Halloran, Co-Chairman  
The Conduit and Foundation Corp.  
4026 Chestnut Street  
Philadelphia, Pennsylvania 19104  
EV 2-9400

Dr. Robert J. Stone, Co-Chairman  
Assistant Professor of Civil Eng.  
Drexel University  
32nd and Chestnut Streets  
Philadelphia, Pennsylvania 19104  
895-2368

### Structural Group — Philadelphia Section ASCE

Dr. Frederic Roll, Chairman  
Professor of Civil Engineering  
The Towne School  
University of Pennsylvania  
Philadelphia, Pennsylvania 19104  
594-8347

### A. W. MARTIN Associates Inc.

Consulting Engineering Services for:  
Pollution Abatement and Control  
Environmental Systems:  
Wastewater — Solid Waste  
Highways - Transportation - Traffic Control  
Land Planning - Structures - Surveying  
Feasibility - Analysis - Design -  
Presentation - Implementation  
900 W. VALLEY FORGE RD.  
King of Prussia, Pa. 19406  
P.O. Box 190 (215) 265-2700

### SPRAGUE & HENWOOD, INC.

Foundation Investigations - Soil Testing and  
Test Borings - Grout Hole Drilling and  
Pressure Grouting - Diamond Core Drilling  
Philadelphia, Pa.  
(215) 735-6774  
Bridgeport, N. J.  
(609) 467-1800

## SECTION PROFILES



Chuck Pennoni

Some men are blessed with an almost unsaturable capacity for work in their private professional pursuits, and simultaneously participate as officials or members in a staggering number of organizations. Yet they

never appear to be busy or overwhelmed by the many petitions upon their time and energies. Such an individual is C. R. ("Chuck") Pennoni. The nickname has almost assumed official status; but his parents—undoubtedly oriented to Old World romanticism, bestowed on him the Christian name Celestino, which is charmingly appropriate to his personality, but inadequate as to his fulfillments. It means (editorial license invoked) "heavenly little star." He's a heavenly BIG star!

Chuck is the Secretary of the Philadelphia Section, ASCE, a post he has occupied since 1968. Until he was elected, in 1972, Vice President of the Philadelphia Chapter, Pennsylvania Society of Professional Engineers, he was at the same time Secretary of that distinguished organization; and for a year—also at the same time—he was PSPE Publications Committee Chairman. There is much more in his biography of professional activities, as we shall see later.

Mr. Pennoni holds a B.S. (1963) and M.S. (1966) in Civil Engineering, both earned at Drexel University Evening College. He earlier attended Penn State University (1955-58). From 1959 to 1966 he held varied positions in design and field engineering with private consulting firms and construction companies, and the City of Philadelphia. In 1966, he established his own consulting engineering firm, Pennoni Associates, Inc., which has become one of the most respected offices in Philadelphia. Its clientele includes the U. S. Corps of Engineers, the Department of the Navy, several Townships and Municipalities, Sewer and Water Authorities, and major private land developers. The firm specializes in municipal engineering and land development.

Registered as a Professional Engineer in Pennsylvania, New Jersey, Delaware, West Virginia, Vermont and New York,

(continued on page 6)



### HUDSON ENGINEERS, INC. Professional Engineers & Consultants

Supports the Goals and  
Activities of A.S.C.E.

Telephone 215-735-5131  
121 S. BROAD STREET  
Philadelphia, Pa. 19107

## SECTION PROFILES

(continued from page 5)

Chuck Pennoni is also a Registered Professional Planner and a Registered Surveyor in New Jersey. He is a member of the National Council of Engineering Examiners. This human dynamo is a member, in addition to ASCE, NSPE and PSPE — of the American Water Works Association, American Public Works Association, Water Pollution Control Federation, the Institute of Traffic Engineers, The Franklin Institute, and the Panel of Arbitrators of the American Arbitration Association. Last year, he was appointed to the Mayor's Science and Technology Advisory Council of Philadelphia. At PSPE he is also Chairman of both Local and State Constitution and By-Laws Committees.

Chuck has won many professional awards. Prominent among these are: Philadelphia Chapter, PSPE 1971 Young Engineer-of-the-Year; and Drexel University Alumni Association 1973 Honor Man-of-the-Year. His Philadelphia Section, ASCE activities, in addition to the Secretaryship, include: Past President, Associate Member Forum; Secretary-Treasurer, District 4 Council; Construction Career Day Committee (4 years); Drexel University Student Chapter Contact Member. Nationally in ASCE, he is a member of the Local Sections Committee of the Sanitary Engineering Division.

His professional enterprises and affiliations have not restricted Chuck's sense of civic responsibility and participation. He maintains a continuing interest, as a member and Cub Master of his local Pack 12, in the Boy Scouts of America. Since 1969 he has been a member of the Drexel Hill Home and School Association, chairing the Task Committee for a new elementary school, and the Track and Field Day Committee. Chuck resides in Drexel Hill, Pa. with his patient, understanding and ever-loving wife Annette, and their four lovely children: David 12; Dianne, 11; Vincent, 10; and Andrew, 6. We must assume that the family sees him once in a while, although how this is possible we cannot imagine.

A biography such as the one capsuled in this profile — abbreviated and incomplete though it is — reveals the amplitude of a man — we are very proud to claim as a member of the Philadelphia Section, ASCE. So long as there are men of the caliber of Chuck Pennoni on our membership roster, to that extent will we persist as a potent, energetic and viable force within the engineering profession and within the community at large.

## TECHNICAL GROUP ACTIVITIES

## Soil Mechanics and Foundations Group

Date:

February 19, 1974

Place:

Engineers' Club

Time:

7:00 P.M.

Speaker:

Donald L. York, Engineer of Soils and Foundations, Port Authority of New York and New Jersey.

Subject:

Site Preloading

Program Host:

Richard E. Mabry, Chairman, SM&amp;F

In this presentation, many of the innovative techniques of site preloading that have been recently utilized will be illustrated through several case history discussions. Site preloading has been used as an economical means of preparing and developing marginal lands so that expensive building foundation systems are frequently not needed. All engineers involved with an interest in land development are cordially invited. Refreshments will be provided during the meeting.

## Proceedings Available

The Soil Mechanics and Foundations Group is proud to announce its 3rd annual Proceedings. This 400 page volume is on the topic of "Shallow Foundations" and contains five complete papers and a panel discussion of the subject which was the topic of last year's program under the direction of Cetin A. Okcuoglu of Geotech Inc.

Cost per volume is \$10.00 and it can be ordered through S. M. & F. Group Vice Chairman Alfred McClymont, Geotech, Inc., 6705 Park Ave., Pennsauken, N. J. 08109.

Check may be made payable to Mr. McClymont or to Soil Mechanics and Foundations Group, Philadelphia Section ASCE.

### JUSTIN & COURTNEY

Consulting Engineers

Water Supply, Reservoirs, Flood Control  
Drainage, Irrigation, Dams,  
Hydroelectric Power, Pumped Storage  
Planning - Reports - Design - Inspection

226 W. Rittenhouse Square  
Philadelphia, Pa. 19103

(215) 546-5504

## Transportation &amp; Urban Development Group

February Luncheon Meeting:

Thursday, February 14, 1974.

Engineers' Club, 12:00 noon sharp.

Subject:

Designing an Airport Rail Link  
between Center City Philadelphia  
and International Airport.

Speaker:

Daniel B. Wessells, Urban Engineers,  
Inc., Vice-Chairman of ASCE Trans-  
portation & Urban Development Grp.

Program Host:

Ira N. Pierce, Chairman, T&UD Group  
Cost of the buffet luncheon is \$1.95.  
Please make reservations in advance  
by calling LO 7-3000, Ext. 41.

## NOTE:

T & U D Group Chairman Ira Pierce, Chief, Public Transportation Planning, Delaware Valley Regional Planning Commission, is arranging for papers to be presented at the ASCE Transportation Meeting in Montreal, Canada, in July, 1974. For more information on this, you may contact Mr. Pierce at LO 7-3000, or contact him at the above T & U D Group Meeting.

## TRENTON BRANCH

The February meeting of the Trenton Branch of the Philadelphia Section will be as follows:

February 19, 1974

Subject:

The Atlantic Generating Station

The presentation will concern itself with the proposed off-shore nuclear generating stations of the Public Service Electric and Gas Company.

Speaker:

Mr. Harold G. Frowery, Special Ser-  
vices Representative PSE and G. Co.

The meeting will be held at the Glendale Tavern, 48 New Hillcrest Avenue, Trenton, New Jersey. The Glendale is located near the junction of Parkside and Pennington Avenues in Ewing Township, New Jersey. Fellowship hour starts at 6:00 P.M., dinner at 6:30 P.M. and the meeting at 7:30 P.M. Philadelphia Section members, wives, and guests are cordially invited to attend. A free dinner is given away to one lucky person, and in addition, all Princeton University Student Chapter members in attendance will have one-half the meal cost paid for by the Trenton Branch. For reservations please call Secretary-Treasurer, Ronald B. Rulon at (609) 883-9500, Extension 265. Those unable to attend dinner will be most welcome to join the group for the speaker's presentation.

## COMMITTEE ON LEGISLATIVE AFFAIRS REPORT

by George R. Beetle, Chairman

(A recent NSPE report recommending major changes in legislation affecting the engineering profession is discussed later in this article. **Please read it**).

Legislative actions affecting the profession become more frequent and complex with each passing year.

The national engineering professional societies are moving vigorously to meet the changing needs, as the NSPE task force report attests.

Action is also needed at the State and local level, however; and to this end the Philadelphia Section would like to strengthen the present Section Committee on Legislative Affairs.

George R. Beetle, Partner with Louis T. Klauder and Associates, is serving as Chairman of the Committee this year and would welcome hearing from any members interested in working on legislative problems concerning professional conduct, procurement of engineering services, pensions, land use regulation and the expected conversion to the metric system.

George can be reached at Louis T. Klauder and Associates, LO 3-2570.

### NSPE Task Force Reports on Political Involvement in Contracts Awards

Mr. Agnew's resignation has prompted relatively wide-spread criticism of the engineering profession. In response to the many questions being asked, the National Society of Professional Engineers recently appointed a task force of nationally prominent engineers to study the problems in some depth.

The task force published a report in November, 1973, on political involvement in awarding engineering contracts.

The task force report gives attention to alternatives for the procurement of engineering services and the selection of consulting engineers; but the major emphasis in the report concerns professional conduct and political contributions.

#### Professional Conduct

The report urges that State Registration Boards be authorized to establish formal rules of professional conduct, among which the following statement would be included:

"The engineer shall not pay or offer to pay, either directly or indirectly, any commission, political contribution, or a gift or other consideration in order to secure work, exclusive of securing salaried positions through employment agencies."

The report recommends that the State Registration Boards be strengthened and given authority for investigatory review as a means of applying this explicit standard effectively.

#### Political Contributions

The task force recommends that state legislation also be amended to provide a limitation on political contributions by engineers to nominal amounts of \$100 or less. The limitation would be enforced by requiring that an affidavit be attached to all public contracts for engineering services, confirming that the engineer (and his partners) would not have contributed more than such nominal amounts in any election during the two years preceding the date of the contract.

These recommendations by the task force would represent major steps if adopted by the engineering profession and written into law. They deserve serious consideration by every practicing engineer.

Those interested can obtain copies of the NSPE report from George Beetle at Louis T. Klauder and Associates as noted earlier in this article.

*(Editor's Note: The following letter to the editor of the Philadelphia Inquirer was published recently. Because it is so relevant to the Legislative Affairs Committee report, we reprint it here.)*

To the Editor of The Inquirer:

I'm writing in response to the October 20 Opp-Ed article by Myles Standish in which he asserted that the Watergate affair has demonstrated a need for an official secrets act in the United States.

I disagree. What we need is fuller disclosure of official activity, not broader sanctions for secrecy in government.

The present system for classifying governmental records and restricting public access to them is based on an executive order of the President. Congress has never confirmed it by statute.

As recent events have shown, the system invites tragic and intolerable abuse, resting generally on exclusive control of factual information by the executive branch. One result has been willful deception of Congress and the American people, mostly in the conduct of foreign and military policy.

The practices of classification are now so widespread that they are commonly used at all levels of the executive branch to conceal bureaucratic bumbling and political chicanery of the most dangerous sort.

Obstruction of congressional and judicial procedures has depended primarily on the withholding of information, on grounds that the executive is privi-

leged in the conduct of its affairs and lies absolutely beyond the reach of sister branches of government, even when official criminality and constitutional rights are at issue.

This is official secrecy in a form that threatens our very system of government and the preservation of ideals held sacred and essential to our way of life. I say enough.

Our form of government depends upon the trust and support of our people, which we don't now have. Regardless of Watergate denouncement, an official secrets act could not but undermine public confidence further. Perhaps it would even evelate distrust of government to permanent and institutional status. I would rather see Congress act now to dismantle the present classification system virtually in its entirety, and to reaffirm our national intent to trust the people with the facts.

George R. Beetle

## MARK YOUR CALENDAR NOW!

### Preview of coming Section Meetings

#### MARCH 12, 1974

Arranged by The Associate Member Forum

#### SUBJECT:

PROFESSIONAL LIABILITY

#### SPEAKERS:

**Ralph B. Powell, P.E.**, Attorney-at-Law, Harvey, Pennington, Harting and Renneisen, Ltd.

**James Stevens**, Victor Schinerer Agency, Continental Casualty Insurance Company.

#### PROGRAM HOST:

**Joseph R. Syrnick**, President, Associate Member Forum.

#### SPECIAL FEATURE:

**Life Membership Certificates Awards**

#### APRIL 9, 1974

Annual Joint Meeting with the Society of American Military Engineer — At the Engineers' Club

#### SUBJECT:

BRAZIL'S RIO NITEROI CROSSING

#### SPEAKER:

**Gerald F. Fox**, Partner, Howard, Needles, Tammen and Bergendoff

#### PROGRAM HOST:

**Robert O. Drange**, President, Philadelphia Section, ASCE

And **Saturday, May 4 1974** . . . Gala Day . . . **THE ANNUAL SPRING SOCIAL** at BALA GOLF CLUB.

## AMF NOMINATES TWO FOR NATIONAL AWARD

The Associate Member Forum has nominated two of its members for the Edmund Friedman Young Engineer Award for Professional Achievement.

This national award is presented annually to younger members of the Society who are judged to have attained significant professional achievement as measured by such criteria as service to the profession, leadership, technical competence, integrity, and contributions to public service both within and outside of the profession.

The nominees are:

**J. Robert Gallagher**, an Assistant Division Engineer with the Philadelphia Water Department, and

**John Schumann**, a Transportation Engineer employed by Louis T. Klaunder and Associates.

The Philadelphia Section extends its congratulations to these two gentlemen and wishes them success in the award process.

## NEW MEMBERS

- Aechione, Thomas**, 933 Stoneybrook Dr., Springfield, Pa. 19064.
- Akdogan, Cengiz**, 102 Community Dr., Apartment F, Shillington, Pa. 19607.
- Box, Robert A.**, 1104 Turner Ave., Drexel Hill, Pa. 19026.
- Bürg, Albert, P.**, 1906 Sansom St., Apt. 72, Phila., Pa. 19103.
- Brown, James R.**, 19 Pickwick La., Malvern, Pa. 19355.
- Browne, Francis X., Dr.**, Betz Envir. Engineers, 1 Plymouth Meeting Mall, Plymouth Meeting, Pa. 19462.
- Ballod, Martin C.**, 227 Hill Ave., Horsham, Pa. 19044.
- Brouillet, Philip, C.**, Radwyn Apt. B-23, Bryn Mawr, Pa. 19010.
- Cahill, Thomas H.**, Tri-County Conservancy, Envir. Programs Dept., P.O. Box 141, Chadds Ford, Pa. 19317.
- Capella, Dennis P.**, 1254 Browning St., Camden, N. J. 08104.
- Carter, Richard L.**, 99 Eaves Mill Rd., Medford, N. J. 08055.
- Castoro, Saverio W.**, 85 E. Broad St., Hopewell, N. J. 08525.
- Chen, Jyu-Shing**, 518 Walnut Ave., Lindenwold, N. J. 08021.
- Cole, Peter P.**, Princeton University, CGE Department, Eng. Quad., Princeton, N. J. 08540.
- Davidson, James S., Jr.**, 1842 Berwyn St., Phila., Pa. 19115.
- Dentz, Robert N.**, RD 2 Elm Ridge Rd., Princeton, N. J. 08540.
- English, Paul X., III**, 9 Quarterwood Rd., Malvern, Pa. 19355.
- Ertz, David B.**, 1412 Independence Dr., Reading, Pa. 19609.
- Ewing, Anita Miss**, 3650 Chestnut St., Apt. B-606, Phila., Pa. 19104.
- Ferry, Joseph J.**, 5018 Pennway St., Phila., Pa. 19124.
- Fetters, Drew B.**, Kane & Hillside Dr., Malvern, Pa. 19355.
- Fijalkowski, Ronald J.**, 4568 Bermuda St., Phila., Pa. 19124.
- Fike, Lane B.**, 117 N. 20th St., Phila., Pa. 19103.
- Finlay, Richard A.**, 436 Leanova St., Brick Town, N. J. 08723.
- Fraim, Joseph W.**, 919 North Ave., Springfield, Pa. 19064.
- Gans, Harold W.**, 885 No. Easton Rd., Apt. 9A2, Glenside, Pa. 19038.
- Grahma, Bruce S.**, Plaza Gardens, Apt. 18, Bayshore Rd., Villas, N. J. 08251.
- Greger, Paul W.**, 1162 N. 34th St., Apt. 5 Camden, N. J. 08105.
- Harmon, David O.**, 5535 W. Girard Ave., Phila., Pa. 19131.
- Hocker, Robert G., Jr. Lt.**, 2617 Hirst Terrace, Havertown, Pa. 19083.
- Hohns, H. Murray**, Wagner-Hohns-Ingus, Inc., 212 High St., Mt. Holly, N. J. 08060.
- Huber, Kenneth M.**, 75 Carter Rd., RD3 Princeton, N. J. 08540.
- Husami, Ziyad I.**, Colonial Gardens, Apt. K-115, Morrisville, Pa. 19067.
- Jablonski, Joseph F., III**, Lukens Steel Co., So. First Ave., Coatesville, Pa. 19320.
- Jacob, K. Philip**, Coachmen Manor, 401 Gibbsboro Rd., Apt. 504, Lindenwold, N. J. 08021.
- Johanson, James R.**, Farmington Woods, Apt. C-10, Pottstown, Pa. 19464.
- Kearney, John R.**, 110 Potter St., Dunmore, Pa. 18512.
- Kenderian, Richard V.**, 12-5 Fountain Dr., Lake-wood, N. J. 08701.
- Kling, Thomas J.**, 166 Hillside Circle, Villanova, Pa. 19085.
- Klitzsch, Hellmuth**, 114-11 Hartford Arms, Revere Rd., Rummelmede, N. J. 08078.
- Komarc, George A.**, 98 W. 7th Ave., Trappe, Col-legeville, Pa. 19426.
- Kornhauser, Alain L.**, Princeton Univ. E-414 Engr. Qund., Princeton, N. J. 08540.
- Lehrer, Peter M.**, 3901 Conshohocken Ave., Apt. 188, Phila., Pa. 19131.
- Long, Eugene F.**, Gilbert Assocs. Inc., 525 Lan-caster Ave., Reading, Pa. 19603.
- Long, Kenneth N.**, 111 Boot Rd., Newtown Square, Pa. 19073.
- Louh, Phillip S-H**, A-9 Stoney-Creek Apts., 410 E. Hinckley Ave., Ridley Park, Pa. 19078.
- Mackie, Charles H.**, Charles H. Mackie & Assoc., US Highway 9, P.O. Box 122, Barnegat, N. J. 08005.
- Mancinelli, Peter**, 664 Cricket Ave., Ardsley, Pa. 19038.
- Markovich, Alexander**, 2602 Elbridge St., Phila., Pa. 19149.
- McKeever, William S., Jr.**, Roy F. Weston, Inc., 1426 Lewis La., West Chester, Pa. 19380.
- McLaughlin, Philip, V., Jr., Dr.**, 1261 Wunder-land Rd., Roslyn, Pa. 19001.
- McNoldy, Richard J.**, 310 Glenwood Dr., Doug-lasville, Pa. 19518.
- Meadows, David B.**, 114 4th Avenue, Phoenix-ville, Pa. 19460.
- Ming, Shiu T.**, 502 Madison Dr., East Windsor, N. J. 08520.
- Mirchich, John M.**, Berkshire Towers, Box 31, 101 N. 5th St., Reading, Pa. 19601.
- Modjtahedi, Djavad**, 914 S. 48, Phila., Pa. 19143.
- Moore, Richard D.**, 1530 Yacht Ave., Cape May, N. J. 08204.
- Morgan, Harry**, 2112 Sierra Rd., Plymouth Meet-ing, Pa. 19462.
- Morrison, Richard B.**, Project Engineering, Inc., 6 Blue Ridge Rd., Voorhees, N. J. 08043.
- Neuman, Charles A.**, Will-O-Hill B-12, 1904 Van Reed Rd., Wyomissing, Pa. 19610.
- Nickola, Wayne E.**, Photolastic, Inc., 67 Lincoln Hwy., Malvern, Pa. 19355.
- O'Donnell, Michael F.**, 324 Lockheed Rd., Brick-town, N. J. 08723.
- Olivo, Charles J.**, 353 Beverly Blvd., Upper Darby, Pa. 19082.
- Owen, David F.**, 414 Merion Ave., Pine Beach, N. J. 08741.
- Oyler, Charles F.**, 1096 Crossbow Way, Lansdale, Pa. 19446.
- Patel, Bhulabhai C.**, 424 S. 42nd St., Phila., Pa. 19104.
- Pearson, Kenneth C.**, 4030 Penn Rd., Plymouth Meeting, Pa. 19462.
- Pinder, George F., Dr.**, Princeton Univ., Dept. of Civil, Geological Eng-Eng. Quad., Princeton, N. J. 08540.
- Plucienik, Robert H.**, Howard Needles Tammen & Bergendoff, 551 W. Lancaster Ave., Haver-ford, Pa. 19041.
- Puri, Satwant S.**, 120 N. Charlotte St., Potts-town, Pa. 19464.
- Redner, S. Alex.**, Photolastic, Inc., 67 Lincoln Hwy., Malvern, Pa. 19355.
- Reimer, Wallace F.**, 119 S. Delaware Ave., Apt. 8-C-4, Yardley, Pa. 19087.
- Rivera, Jose L.**, 117 Dickinson Ct., Pemberton, N. J. 08068.
- Roberts, Thomas E.**, 5 Margaret Dr., Wyomis-sing Hills, Pa. 19610.
- Rookstool, Karl E.**, 649 S. Henderson, Apt. A-307, King of Prussia, Pa. 19406.
- Sands, David**, 179 West Court, Doylestown, Pa. 18901.
- Sarajian, Charles M.**, Richardson & Gordon, 3 Penn Center Plaza, Phila., Pa. 19102.
- Schutte, Richard R.**, 3519 E. Goshen Rd., New-town Square, Pa. 19078.
- Segol, Genevieve Miss**, Princeton University, Dept. of Civil & Geological Eng., Princeton, N. J. 08540.
- Shipman, Robert C.**, 250 Montgomery Ave., Haver-erford, Pa. 19041.
- Sletten, Robert S.**, 1707 Robin Hill Apts., Voor-hees, N. J. 08043.
- Smith, Gary L.**, Box 250, RD 3, Fleetwood, Pa. 19522.
- Smythe, Alexander B.**, 242 Lowrys La., Rose-mont, Pa. 19010.
- Socratous, Georgios**, 3701 Chestnut St., Apt. 403, Philadelphia, Pa. 19104.
- Sokolowski, Henry J.**, 2731 Kirkbride St., Phila., Pa. 19137.
- Stanhope, John W.**, Box 158 RD 2 New Hope, Pa. 18938.
- Stinolis, Joseph G.**, 1606 Market St., Ashland, Pa. 17921.
- Sudall, Richard J.**, Korman Corp., 101 Greenwood Ave., Jenkintown, Pa. 19046.
- Swartwout, John B.**, Pike Lake, Apt. 1607, Lind-enwold, N. J. 08021.
- Szabo, Joseph R.**, Pennoni Assocs. Inc., 2006 Walnut St., Philadelphia, Pa. 19103.
- Telep, Daniel M.**, Tel-Stock, Inc., 893 Princess Dr., Yardley, Pa. 19067.
- Torres, Clifford E.**, 1054 Ridgewood La., West Chester, Pa. 19380.
- Viscuso, Joseph J.**, 1 Scarlet Ave., Aston, Pa. 19014.
- Vivona, Morris A.**, 22 Meadowbrook Dr., Lake-wood, N. J. 08701.
- Vollberg, Edward A.**, 6925 Stenton Ave., Phila., Pa. 19138.
- Weber, Harold H. Jr.**, 201 Jay St., Apt. I-115, Stowe, Pa. 19464.
- Weiss, Robert L.**, 120 Terrace Ave., Upper Darby, Pa. 19082.
- Wells, Richard P.**, 403 Ft. Washington Ave., Ft. Washington, Pa. 19034.
- Williams, Gwynne, P.**, 9 Sanhican Dr., Apt. 8-A, Trenton, N. J. 08618.
- Zaimis, George M.**, Philadelphia Electric Co., 2301 Market St., Phila., Pa. 19101.
- Zink, Thomas J.**, Fellows Read & Weber, Inc., 310 Main St., Toms River, N. J. 08753.