

the news

PHILADELPHIA SECTION



AMERICAN SOCIETY OF CIVIL ENGINEERS

VOL. 46 - No. 6

Our 61st Year

MARCH, 1974

MARCH MEETING

Philadelphia Section, American Society of Civil Engineers

TUESDAY, MARCH 12, 1974

Engineers' Club, 1317 Spruce Street, Philadelphia

Cocktails — 5:30

Dinner — 6:30

Meeting — 7:30

SUBJECT:

PROFESSIONAL LIABILITY

SPEAKERS:

RALPH B. POWELL, JR. ESQ., Harvey, Pennington,
Herting & Renneisen, Ltd.

PAUL L. GENECKI, Victor O. Schinnerer and Company

PROGRAM HOST:

JOSEPH R. SYRNICK, President, Associate Member Forum

SPECIAL FEATURE:

AWARDING OF LIFE MEMBERSHIP CERTIFICATES

With the dramatic increases in the number of liability claims against professional people, it is imperative that all practicing engineers and architects be fully aware of their responsibilities regarding project design, construction, and inspection. This presentation will discuss the liability incurred by engineers and architects, pitfalls which result in problems to the professional, the type of insurance coverage available to engineers, and the particular acts or omissions which would be insured under such policies.

Ralph B. Powell. Prior to his admittance into Law School, was a practicing professional engineer and a principal in an architectural-engineer firm.

He received his B.S.C.E. from the Citadel in 1955 and his Juris Doctor degree from the University of Florida College of Law.

In his present practice, Mr. Powell is counsel to the General Building Contractors Association where his functions are primarily in labor relations matters.



Ralph B. Powell, Jr.

Paul L. Genecki is the Director of the Office for Professional Liability Research of Victor O. Schinnerer and Company. He attended Rutgers University and the University of Maryland from which he received a Bachelor of Arts Degree in Business Management. Mr. Genecki is a veteran of eleven years in the insurance industry, eight of which have been concerned solely with architects' and engineers' professional liability claims. In his present position he is, among other things, in charge of conducting professional practice improvement seminars and preparing several monthly periodicals.



Paul L. Genecki

MARCH MEETING IS "VILLANOVA NIGHT"

Continuing its policy of highlighting the Civil Engineering Departments of local colleges at its monthly meetings, The Phila. Section, ASCE will focus on Villanova University at the March 12, 1974 meeting. Student Chapters Committee Chairman, Dr. Frederic Roll has mailed four complimentary dinner tickets to Prof. Robert Lynch, Faculty Advisor of the Villanova ASCE Student Chapter, for distribution to selected students. **All other students may attend dinner at half price** (about \$3.00), or they may attend the meeting after dinner, at 7:30, without charge.

Professor Lynch will be invited to present a brief talk about civil engineering activities at Villanova, and he will introduce faculty members, alumni and Student Chapter officers and members in attendance.

MEMBERS IN THE NEWS

Dr. Dalim K. Majumdar, a principal of Soils Analysis and Foundation Engineering Company, 1315 Walnut Street, Philadelphia, has been appointed to the faculty as an Adjunct Professor of Soils and Foundation Engineering in the Temple University College of Engineering Technology, it has been announced by Dr. John L. Rumpf, Dean of the College.

THE NEWS staff writer **Richard E. Daniels** was married on February 16th to the former Carol Jean MacMillan. On behalf of the Section and the entire NEWS staff, we tender the happy couple our sincerest felicitations for a joyful and abundant life together!

(continued on page 4)

Free Beer and Refreshments at the Meeting
Mail Reservation Cards Immediately — Win a FREE DINNER!

FEBRUARY MEETING

February 12, 1974

(Editor's Note: THE NEWS is grateful to Dennis J. Mohan, of the Associate Member Forum, for his authorship of the main body of the following article.)

A splendid turnout of more than 175 members and guests attended the excellent February, 1974 meeting of the Philadelphia Section. We even had a guest from Florida! Principal speaker was **Robert E. White**, President, Spencer, White and Prentis, Inc., New York, N. Y., whose topic was: "Sheeting, Shoring and Underpinning." Program Host was **Joseph P. Welsh**, District Manager, SOILTECH Dept., Raymond International, Inc. Mr. Welsh is also Program Committee Chairman of the Section. (Mr. White's firm, renowned experts in all phases of contracting techniques in foundations repairs and restoration, and complex underpinning and support operations, has recently been merged into Raymond International, a worldwide engineering, heavy construction and manufacturing conglomerate corporation whose main office is in Houston, Texas).

"Swarthmore and Widener Night"

The spotlight of the early part of the meeting was on the Civil Engineering Departments of Swarthmore College and Widener College. Section President **Robert O. Drange** presented to **Professor M. Joseph Willis**, Faculty Advisor, a National ASCE 50-year Certificate for Swarthmore's ASCE Student Chapter, one of four to have achieved this landmark birthday. Dr. Willis reviewed the general engineering curricula at Swarthmore, which has traditionally de-emphasized the specialized disciplines, such as C.E., M.E. etc. He noted, however, that there is a growing tendency at the school toward civil engineering preference. A pattern also has emerged incorporating greater focus on practice and design, as opposed to purely theoretical learning. Members of the Swarthmore faculty, alumni and Student Chapter who were in attendance were introduced.

Professor George M. Bathish, Faculty Advisor of Widener's Student Chapter, introduced the civil engineering personnel of his school who were in the audience. He announced that the 36th Annual Student Chapter Conference will be hosted by Widener College in April of this year. Dr. Bathish briefly described the newly established Center of Engineering, one of four 4-year principal educational categories at Widener, which include arts and sciences, the hu-

manities and other professions. An interesting civil engineering course is the senior year Team Project, in which two or three students work together in an experimental program from conception to design, construction and testing of an engineering function of their choice. Dr. Bathish discussed other broad-ranged programs of particular interest to C. E. specialists.

Mr. White's Interesting Talk

In a witty, subtle and sophisticated fashion, Mr. White presented the topic of sheeting, shoring, and underpinning in its various facets aided by a barrage of excellent slides. Speaking entirely ad lib, Mr. White soon warmed up the audience with his timely humor and flowing delivery.

Spencer, White and Prentice has been in the foundation business since 1919 and therefore has been involved in virtually every type of project and every possible soil and groundwater condition. The presentation took on travelog proportions with the numerous locations and world famous jobs in which Mr. White was involved.

The various types of materials and systems used for earth retention were presented first utilizing case histories. Beginning with the all timber retention system for the Sperry Rand Building in New York City, the transition from wood to steel resulting from increasing material and labor costs was noted. The more recent systems use driven H piles and wood lagging.

The excavation for the FBI Building in Washington, D.C. (1969), accomplished in stages, used horizontal corner braces and berm techniques for additional support. The use of interlocking steel sheet piling was also mentioned.

Recent developments and rising labor costs have brought about the use of heavy unsupported pipes and occasional lacing for large excavations such as that for the Levi Strauss Building in San Francisco. The excavation here was 200 feet square and 45 feet deep.

Churn drilling is now being extensively used for placing soldier beams encased in concrete. This method has the ability to chop through boulders and penetrate rock, and was used for this reason at the Mount Sinai Hospital in New York City. Cranes and trestles were also utilized for easy access to all parts of the jobsite.

Mr. White next discussed the excavation for the Sears Tower in Chicago and the use here of a 36 inch concrete slurry wall and the mechanics involved in this relatively new earth retention

technique. Other noteworthy features of this retention system included large diameter pipe corner braces with vertical braces transferring load to a mat supported on piles.

The development of tiebacks in rock and soil were discussed. The method and equipment for installation was shown and the testing procedure was described. The fact that the use of tiebacks allow much greater construction freedom by lessening obstructions was pointed out by a slide contrasting a tieback installation with the standard excavation using rakers for support.

Other projects shown by Mr. White presented various other retention techniques including the use of a bituminous mix in lieu of sheeting at a 112 foot deep pit in Los Angeles. Augered caissons with lean concrete used essentially to retain earth have also been used with great success.

The World Trade Center, the largest tieback operation to date, illustrates the use of slurry wall construction beginning with pretrenching, the placing of the reinforcing cages with cranes and then tremi concreting the trench. Cast

PHILADELPHIA SECTION AMERICAN SOCIETY OF CIVIL ENGINEERS

Officers 1973-1974

PRESIDENT
Robert O. Drange

VICE PRESIDENTS
Alfred O. Quinn Robert M. Koerner

SECRETARY
Celestino R. Pennoni

ASSISTANT SECRETARY
Ira N. Pierce

TREASURER
Theodore Davis

MEMBERSHIP SECRETARY
Harvey R. Cohen

DIRECTORS
Will M. Heiser Kenneth J. Zitomer
Richard E. Hubbell John H. Leapson
John J. Coscia
Joseph R. Szymick
(from Associate Member Forum)
Robert F. LeMassena
(from Trenton Branch)

PAST PRESIDENTS
Bruno J. Talvachia Lawrence M. Moy
John E. McCall

PUBLICATIONS COMMITTEE

Sidney Robin,
Chairman and Editor of THE NEWS

Staff Writers:
Will M. Heiser Joseph R. Szymick

Associate Member Forum News Editor:
Richard E. Daniels

Publications Coordinator:
Albert M. Tantalz

Advertising Manager:
Joseph M. Cervone

**COPY DEADLINE FOR
APRIL, 1974 ISSUE
MARCH 18, 1974**

iron tube sleeves are provided for future tieback installation.

Mr. White then turned his attention to underpinning and again with excellent slides illustrated successful job accomplishment by his "conservative" firm, and very poor jobs undertaken by "low bidders." He pointed out that underpinning is undertaken either where there are buildings next door or to arrest settlement. As was clearly brought out, the possibility of structural damage is great when underpinning is not done. Pit and jackpile underpinning were the methods illustrated. Jackpile underpinning reacts against the footing of the building and has also been utilized as soldier beams for deeper excavations. Several case histories were presented including PATH tubes underpinned by drilled caissons and support work at Yankee Stadium, and the historically significant Monadnock Building in Chicago.

Saving the best for last and, significantly the date of February 12, the restoration of the Ford Theatre in Washington was discussed including humorous historical allegories alluding to the assassination of President Lincoln.

An active question and answer period followed and the retorts were brief, factual, and illuminating. Legal implications and movements of earth retention systems were among the topics brought out in the session.

In summary, Mr. White pointed out and illustrated in his talk that there are many methods of sheeting, shoring, and underpinning utilizing various materials and techniques suitable to the existing job conditions relating to legal matters, working restrictions (e.g., overhead clearance) and, most importantly, the soil conditions existing at the site.

Mr. White's lecture was a litany of the unseen miracles of one of the most difficult and ingenious specialties in the engineering and construction profession dealing with huge and complex structures. It is unfortunate that the general public has little conception of these miracles. They see, in the main, the beautiful windows and trimmings, the bronze or stainless-steel skins of elegantly-facaded superstructures and court arcades.

Heartfelt thanks should be extended to the incomparable Mr. White and to Program Chairman Joe Welsh who arranged this exciting program. President Robert O. Drange presented Mr. White the Section's Certificate of Appreciation at the conclusion of his talk.

SECTION TO HOST 1976 ASCE CONVENTION

The Philadelphia Section has been selected to host the National ASCE Annual Convention in October, 1976. It will be the first major ASCE assembly in Philadelphia since the 1966 Annual Meeting and Transportation Engineering Conference, at the Sheraton Hotel, October 17-21, 1966. The Convention will be one of the two principal functions under the annual conference policy recently adopted by the Board of Direction. The business of the Annual Meeting, including installation of new ASCE officers, will be conducted at the 1976 Philadelphia Convention. The affair will be a distinctive feature of the comprehensive Bicentennial Year program being formulated by the Philadelphia Section's Bicentennial Committee under the chairmanship of Vice President Robert M. Koerner. Periodic progress reports on this important Committee's work will be published in THE NEWS.

McPhillips General Chairman

President Robert O. Drange is pleased to announce the acceptance by Past President **James W. McPhillips** of the General Chairmanship of the 1976 ASCE Annual Convention. Jim had been endorsed unanimously for the job by the Section's Board of Directors. He is also a member of a newly formed National Committee on Convention and Conference Programs, scheduled to hold its first meeting in New York City some time in March.

When your NEWS editor asked Mr. McPhillips for comments on his appointment, his reply was succinct, forceful and unequivocal. He said "... H-E-L-P . . ." Let "HBLP" therefore be the dictum for membership participation in the many committees and sub-committees which will be organized in a massive effort to make this significant, once-in-a-lifetime opportunity for the Phila. Section a ringing success. Jim welcomes volunteers, their views, ideas and opin-

ions toward achieving this objective. He may be reached at his office:

Chief Engineer and Surveyor, Department of Streets, 920 Municipal Services Building, Phila., 19107, Phone: MU 6-5537.

NOMINATIONS FOR OFFICE 1974 - 1975

In accordance with the Constitution and By-Laws of the Philadelphia Section, ASCE, the Nominating Committee has submitted to President Robert O. Drange the following official slate of nominees for office for the coming year:

President — Alfred O. Quinn
(one year)

Vice-President — Will M. Heiser
(two years)

Secretary — Ira N. Pierce
(two years)

Assistant Secretary — Louis W. Petulla (one year)

Treasurer — Theodore Davis
(two years)

Membership Secretary — Walter H. Clark (two years)

Director — Howard Minckler
(two years)

Director — Robert Lynch (two years)

Director (@ Associate Member Forum) — Joseph Thompson

Director (@ Trenton Branch) — to be announced

Offices in which incumbents have one more year to serve are:

Vice President — Robert M. Koerner

Directors — Kenneth J. Zitomer
John Leapson
John J. Coscia

Past Presidents to serve on Board of Directors:

Robert O. Drange
Bruno J. Talvacchia
Lawrence M. Moy
John E. McCall

If no additional nominations have been submitted to the President in accordance with the Section's Constitution and By-Laws and filed with the Secretary by April 1, 1974, the above slate of nominees shall be declared elected at that time, and will be installed at the Annual Spring Social at Bala Golf Club, May 4, 1974.

The Nominating Committee was comprised by: Lawrence M. Moy, Chairman; Alfred O. Quinn, Robert M. Koerner, Joseph R. Synchron, Ira N. Pierce, and Robert O. Drange.

JUSTIN & COURTNEY Consulting Engineers

Water Supply, Reservoirs, Flood Control
Drainage, Irrigation, Dams,
Hydroelectric Power, Pumped Storage
Planning - Reports - Design - Inspection

226 W. Rittenhouse Square
Philadelphia, Pa. 19103

(215) 546-5504

ASSOCIATE MEMBER FORUM NEWS

Daniel W. Mead Prize for Associate Members

It's not too late to submit an entry for the Daniel W. Mead Prize. The award is presented to the Associate Member who writes the best paper on professional ethics. This year the topic is "The Engineer's Response to Non-Engineering Criticism of His Professional Work."

Discussions should deal with the engineer's explanations to inquiries of responsible lay citizens and other professional groups in related non-engineering disciplines, regarding the integrity and worth of his proposed solutions to needed physical improvements. Relations between engineers and public officials or political agencies are not intended to be discussed in this paper.

The general rules for the competition are as follows:

1. Only one person may write each paper, not to exceed 2,000 words.
2. Papers shall be presented before a local, regional or national meeting of the Society or its local section.
3. Zone winners (one from each of the four (4) ASCE zones) and a national winner will receive a wall plaque and certificate. The paper by the national winner will be published in *Civil Engineering* or *Engineering Issues*, the Journal of Professional Activities.
4. By June 1, 1974, seven (7) copies of the paper must be submitted to New York Headquarters of ASCE, through Section Secretary C. R. Pennoni.

Nominations for AMF Officers

Nominations are now being received for next year's AMF officers. Thus far, Joe Thomson of Penn DOT has been nominated for president and Ernest Brizell of DVRPC has been nominated for Vice-President. No nominations have yet been received for the position of secretary.

If you would like to make a nomina-

tion please do so by contacting Joseph Syrnick, Department of Streets, Room 920, Municipal Services Bldg., Phila., Pa., 19107.

MEMBERS IN THE NEWS

(continued from page 1)

Past President **Joseph R. Farrell, Jr.**, has been installed as the new President of the General Building Contractors Association. In Joe's words, "... Naturally, we hope to continue our good relationship with the Phila. Section ASCE. We cooperate at present in running the Construction Career Day and if there are any other areas where we can be of help, we will be glad to do so..."

Irwin L. Oster has assumed the position of President of William J. Murdoch Engineers, Inc., a prominent Pittsburgh engineering firm. Murdoch Engineers has recently joined the family of companies of Betz Environmental Engineers, Inc., Plymouth Meeting, for whom Oster has served as Vice President since 1962.

His 24 years of broad experience in municipal, state and federal projects embraces all phases of water and wastewater management, as well as other civil engineering projects including highways.

Irv is a registered professional engineer in many states and is certified by the National Council of Engineering Examiners. His professional affiliations include in addition to ASCE, the American Water Works Association, the American Society of Highway Engineers and the Water Pollution Control Federation.

SEMINAR ON ACI CODE SCHEDULED

The Delaware Valley Chapter of the American Concrete Institute and Drexel University will sponsor a continuing education course titled, "Seminar on 71 ACI Code and 73 Handbook." The seminar will be given six nights beginning April 18 and each of the following Thursdays concluding on May 23.

Registration for the course will cost \$25.00. The ACI handbook SP 17 (73) will be on sale at the first session. This handbook costs \$10.50 for members of the ACI and \$14.00 for others.

Applications for the course can be obtained from:

Director of Continuing Education
Drexel University
32nd and Chestnut Streets
Philadelphia, Pa. 19104

Telephone information will be supplied by calling: 895-2155 or 2156.

Foundation to roof in 23 days! . . . Formigli Stack-wall System.

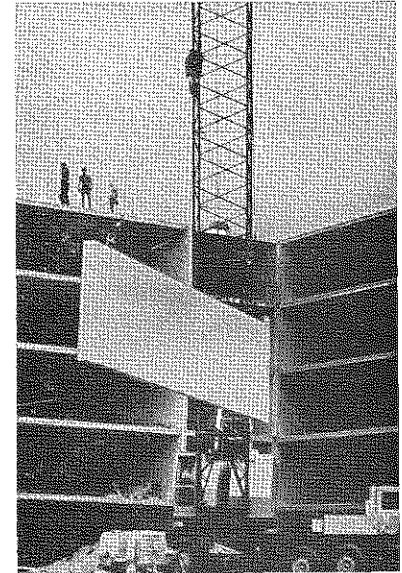


Figure the savings for yourself . . .

23 working days to erect the Formigli Stack-Wall system of hollow core floor and roof slabs and precast concrete walls of six stories, 361 rental units at an estimated time saving of four months, resulting in reduced interest and ground rental, lower general contracting costs, additional days of rental and other income. Easy coordination of mechanicals. Smooth precast walls are ready to accept paint or vinyl paper. Hollow core slabs receive carpet direct, and ceilings are painted.

Formigli has a film slide presentation for interested groups. It can be tailored to fit your time schedule: Call:

FORMIGLI CORPORATION

P. O. Box F, Berlin, New Jersey 08009
West Coast: Upland, California 91786
Phila. Phone: 215-561-0505
Berlin Phone: 609-767-1111

Soils Analysis & Foundation Engineering Co. Consulting Engineers

Civil, Soils and Foundation Engineering;
Site Investigation, Analysis & Reports;
Ground Water & Drainage Study;
Design and Engineering Supervision

Philadelphia, Pa. (215) PE 5-5909
Cherry Hill, N. J. (609) 667-9675

Dalim K. Majumdar, Ph.D., P.E. Principal

**THE CARPENTERS' COMPANY
CELEBRATES 250th
ANNIVERSARY**

During this year of 1974 the life of the Carpenters' Company of the City and County of Philadelphia will have spanned a quarter of a millenium. Following the medieval guild pattern exemplified by the Carpenters Company of London, Philadelphia builders declared their "purpose of obtaining instruction in the science of architecture and assisting members in need of support." Since 1724 the membership has continued as a fraternity of builders and architects. As part of the birthday celebration a symposium will be held at the Athenaeum of Philadelphia on **March 27, 28, 29, 1974.**

Carpenters' Hall, now numbered 320 Chestnut Street, was built in 1770-73. The First Continental Congress, held there in the fall of 1774, was to make it a famous site in American history.

Beginning with tenants like the Library Company of Philadelphia, the American Philosophical Society and the First Bank of the United States, many distinguished organizations headquartered in the Hall. In 1842-43 the Company held a school of architecture on the premises. In 1857, however, it was decided to set the Hall aside as an historic Revolutionary landmark. Nowadays the building is valued as a fine example of Georgian architecture.

The Symposium

Today America's largest industry is the construction business—yet no real account of it has ever been published. Towards closing this gap in our cultural history the Carpenters' Company now presents a selection of outstanding authorities on various important aspects of that huge and ramified industry as it developed before the Civil War.

The English Speaking Union, Philadelphia Branch, is sponsoring a luncheon at which the splendid restoration projects under way at York Minster and

St. Paul's Cathedral will be illustrated by the restorationist himself.

Then the U. S. National Park Service architects will describe their work at Independence Hall and other buildings on the nearby square and a quick visit will be made to see them. Finally, architects of the New York State Office of Parks and Recreation, Division of Historic Preservation, and the National Trust for Historic Preservation will review the work of the building craftsmen they are organizing into travelling work crews, an answer to the current problem of vanishing craftsmanship.

By separate mailing the Membership will receive announcement brochures of this historic occasion, giving full program and reservation details. The Phila. Section is cooperating fully with the innumerable distinguished organizations which have endorsed the Carpenters' Company celebration program. The Membership's active participation is recommended and solicited.

**SECTION
PROFILES**



Joseph R. Syrnick

In the chambers of the Philadelphia Section, ASCE, a youthful and dynamic personality has emerged with trumpeting crescendo. He is **Joseph R. Syrnick**, and the Membership should learn to recognize him, because he is

destined to be increasingly in evidence in the future. He is this year's President of the Associate Member Forum, and his positive, perceptive direction of that splendid group will be sharply focused at the March 12th Section meeting, which was arranged by the Associate Member Forum. Joe Syrnick will be Program Host. He is also a Section Director and a principal staff writer of THE NEWS. In the latter capacity he has lightened immeasurably the burden of your editor in preparing this monthly newsletter. His fresh ideas and feature innovations have injected a new and piquant spirit and character into the paper.

Born in 1946 and raised in the Manayunk Section of Philadelphia (a fact of which he is assertively proud), Joe now lives "up the hill" in Roxborough with his petite and radiant wife Mary Beth and their two beautiful daughters, Genevieve (Jenny), 3; and their newborn baby, Amy.

Mr. Syrnick received a B.S.C.E. at Drexel University in 1969, majoring in Construction Management; and earned his Master's Degree at the same school two years later. His Thesis: "A Distributional Analysis of the Net User Benefits Resulting from Improvements to Transportation Systems," investigates the benefits accruing from the Delaware Valley Regional Planning Commission 1985 adopted Transportation Plan. Post-graduate courses in Geometric Design of Traffic Systems, Transportation Planning, and Engineering Principles Revue were taken at Northwestern and Drexel Universities, and the American Institute of Planners. At Drexel, he was a Graduate Teaching/Research Assistant, analyzing, instructing and lecturing on Transportation and Traffic Engineering subjects.

In addition to his principal job as Civil Engineer in the Bureau of Sur-

(continued on page 6)

MARK YOUR CALENDAR . . .

**THE SECOND ANNUAL
CONCRETE CANOE RACE**
sponsored by the University of Pennsylvania ASCE Student Chapter.

Saturday, April 13, 1974

1:00 to 4:00 pm

on the Schuylkill River.

(Details will appear in the April issue of THE NEWS.)

A. W. MARTIN Associates Inc.

Consulting Engineering Services for:

Pollution Abatement and Control

Environmental Systems:

Wastewater — Solid Waste

Highways - Transportation - Traffic Control

Land Planning - Structures - Surveying

Feasibility - Analysis - Design -

Presentation - Implementation

900 W. VALLEY FORGE RD.

King of Prussia, Pa. 19406

P.O. Box 190 (215) 265-2700

SPRAGUE & HENWOOD, INC.

Foundation Investigations - Soil Testing and

Test Borings - Grout Hole Drilling and

Pressure Grouting - Diamond Core Drilling

Philadelphia, Pa.

(215) 735-6774

Bridgeport, N. J.

(609) 467-1800



HUDSON ENGINEERS, INC.
Professional Engineers & Consultants

Supports the Goals and
Activities of A.S.C.E.

Telephone 215-735-5131

121 S. BROAD STREET
Philadelphia, Pa. 19107

SECTION PROFILES

(continued from page 5)

veys and Design, Philadelphia Department of Streets (1970 to present), Joe is Adjunct Professor at Drexel in Design of Transportation Facilities; and an Instructor in the Construction Engineering Technology Program, jointly sponsored by the Department of Streets and the Community College of Philadelphia.

Mr. Synchronick's duties at Surveys and Design consist of preparing engineering and traffic studies and recommendations; reviewing plans and consultant's engineering reports; and liaison between the Department of Streets and various outside and intra-city agencies. Before joining Streets he was employed for 1½ years by the consulting firm of Modjeski and Masters as a Highway Engineer. During his cooperative civil engineering work-study course at Drexel, Joe gained invaluable experience with the Pennsylvania Department of Highways and the American Steel Engineering Co. as a draftsman, surveyor, construction and bridge-maintenance inspector.

He is a Registered Professional Engineer in Pennsylvania. In addition to ASCE, he is a member of PSPE and NSPE. The October, 1969 issue of the Drexel Technical Journal featured an article by Mr. Synchronick entitled: "Sinking Roads."

Quite a prodigious professional resume for this 27-year-old young fellow!

For recreation, Joe Synchronick's first love is baseball. At Drexel he captained the team, and for seven years he played semi-pro ball in the Penn-Del League. An injury to a knee ligament during a touch football game wiped out his baseball-playing career, but he continues to umpire youth league and men's softball games. Besides these athletic diversions, in Joe's words "... the kids, school, ASCE, work and fixing up the house keep me pretty busy..." He is presently enrolled in a Civil Defense-type course: "Multi-protection Design for Engineers and Architects," conducted by the Department of the Army.

In a post-script note to your editor Joe wrote: "... Sid, it wasn't until you asked me to prepare this resume that I realized how dull I am..." Dull, indeed! Would that every member of the Philadelphia Section were so languid and unproductive! We are proud to have Joseph Synchronick on board. The years to come will bring to the Section the fruits of the extraordinary gifts, talents and potential for greatness of this modest young man.

TECHNICAL GROUP ACTIVITIES

Hydraulic and Sanitary Group

March Dinner Meeting

Date:

Thursday, March 21, 1974.

Location:

General Electric Company
RESD Headquarters
3198 Chestnut Street
Philadelphia, Pennsylvania

Time:

6:30 PM Sharp in Lobby

Subject:

Computer Control of Wastewater
Treatment Plants.

Agenda:

6:30—Tour of GE Computer Systems
and staging area for Chicago Salt
Creek and Monroe County, N. Y.
Treatment Plants.

7:30—Penthouse buffet, compliments
of General Electric Company.

8:15—Speaker

Harold Gilman, GE Automation Sys-
tems Engineer will speak on com-
puter control strategies for waste-
water treatment.

For reservations please call Carl M.
Koch, Secretary-Treas. at 823-2362 by
March 15. Accommodations are limited,
so make your reservations early.

PRETTY SOON IT WILL BE
... BALA SOCIAL TIME!!

The theme for the ASCE Annual
Spring Social this year is simply the
time of year—Spring.

The "swinging" affair will be held on
Saturday, May 4, 1974 at Bala Golf
Club.

Cocktails are 6 to 7 P.M. and then
we will have a delicious roast prime
ribs dinner.

There will be entertainment, door
prizes, and dancing to Gene Mayo's Or-
chestra.

My committee is Mrs. William Clay-
ton (Natalie) and Mrs. Vincent Hughes
(Rosalie).

Tickets are \$11.00 per person and
may be purchased from: Mrs. William
Clayton, English Village, Apt. C-4,
Bldg. 11, North Wales, Pa. 19454.
Phone: MI 6-2817.

Make plans now to spend a lovely
spring evening at Bala with good
friends, good cheer, and a good time for
all!

Hope to see you!

Thank you!

Marie (Mrs. Kenneth J.) Zitomer
Chairman,

Women's Auxiliary,
Combined Social Committee,

WOMEN'S AUXILIARY

After a two-month winter break, the Philadelphia Section's Women's Auxiliary resumes its activities with its regular monthly Luncheon-Meeting program on Wednesday, March 20, 1974, 12:00 noon at the Engineers' Club. It will be a joint meeting of the Women's Auxiliaries of ASCE, and the Philadelphia Chapters of PSPE, ASME, and IEEE; and it promises to be outstanding both as a social gathering and because of the renowned speaker engaged for the occasion. He is **Bernard C. Meltzer**, President, Bernard Meltzer & Associates, Inc., Real Estate Appraisers.

Mr. Meltzer, a prominent civic leader and real estate developer, a Civil Engineer and Active Member of the Phila. Section ASCE, is current Chairman of the Phila. City Planning Commission. Mr. Meltzer has designated no specific or limiting title to his talk, but you can be sure it will be attention-holding and dynamic. A large turnout of Philadelphia Section Auxiliary members for this unusual meeting is urgently requested. You might be very sorry if you miss it.

TRENTON BRANCH

The March meeting of the Trenton Branch of the Philadelphia Section will be a joint meeting with the Princeton University Student Chapter as follows:
Date: Tuesday, March 12, 1974.

The speaker will be Professor Norman J. Sollenberger, of the Department of Civil and Geological Engineering, Princeton University. The topic of discussion will be:

Field experience during Wind Pressure Measurements on a full scale cooling tower at the Martins Creek, Pennsylvania, generating station owned by Pennsylvania Power and Light Company.

The meeting will be held at the Princeton University Quadrangle. There will be a buffet supper served at the Quadrangle with the ASCE Student Chapter as host. The cost of the buffet supper, including cocktails, will be \$6.50 per person. Fellowship hour starts at 6:15 P.M., buffet supper at 7:15 P.M., and the meeting at 8:30 P.M. Ladies, guests, and Philadelphia Section members are cordially invited to attend.

For reservations and travel directions, please call Sec.-Treas. Ronald B. Rulon at (609) 883-9500 (Extension 265), no later than March 7, 1974. Those unable to attend dinner will be most welcome to join the group for the speaker's presentation.