

the news



PHILADELPHIA SECTION

AMERICAN SOCIETY OF CIVIL ENGINEERS

1317 Spruce Street, Philadelphia, PA 19107

Non-Profit Org.
U. S. POSTAGE
PAID
Philadelphia, Penna.
Permit No. 1845

VOL. 55 - 3

OUR 70th YEAR

December, 1982

DECEMBER DINNER MEETING

Philadelphia Section, American Society of Civil Engineers

TUESDAY, DECEMBER 14, 1982

Engineers' Club, 1317 Spruce Street, Philadelphia

Cocktails — 5:30 P.M. Dinner — 6:30 P.M. Meeting — 7:30 P.M.

SUBJECT:

"PROFESSIONAL ENGINEERING LIABILITY"; A ROUND TABLE DISCUSSION.

SPEAKERS:

REEDER R. FOX, Esq.; Partner, Duane, Morris and Heckscher; Phila., Pa.
GREGORY D. KUMM, Asst. Vice President, Schinerer Co., New York City.
IRVIN E. RICHTER, Esq.; President and Chief Executive Officer; Hill International, Inc; Willingboro, N. J.

SPECIAL GUEST:

JOHN H. WIEDEMAN, National President, American Society of Civil Engineers.

Mr. Wiedeman will speak on general concerns of the National Society, and in particular on possible relocation of National Headquarters. He will also discuss thoughts on renovation of our country's infra-structure.

(continued on page 2)

JANUARY DINNER MEETING

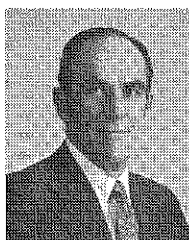
TUESDAY, JANUARY 11, 1983

Cocktails — 5:30 P.M. Dinner — 6:30 P.M. Meeting — 7:30 P.M.

Joint Meeting with Women's Auxiliary, Phila. Section, ASCE

SUBJECT:

TRANSPORTATION THROUGH THE 1980's — Management, Ethics, Politics and Survival.



SPEAKER:

DR. THOMAS D. LARSON, Secretary, Department of Transportation, Commonwealth of Pennsylvania.

DON'T MISS THIS IMPORTANT DISCUSSION BY ONE OF THE FOREMOST AUTHORITIES ON TRANSPORTATION IN THE UNITED STATES.

SPECIAL FEATURE:

DREXEL UNIVERSITY NIGHT

Please call Mr. deKovacs at the Engineers' Club immediately (215 735-5234), for reservations.

STUDENTS — Plan to attend for Dinner (Half Price) or meeting after Dinner.

TECHNICAL GROUP ACTIVITIES

Construction

December Meetings

Date: **Tuesday, December 7, 1982**

Engineers' Club—7:30 P.M.

Subject: **A Primer to Project Control Computer Systems**

Speaker: **Les Seskin**, President, Promacon, Inc.

Program Host: **Fredric L. Plotnick**, Chairman, Construction Group

Joint Meeting with Geotechnical Group

Date: **Wednesday, December 15, 1982**

Engineers' Club—7:00 P.M.

Subject: **Methods of Ground Water Control for Construction and Mining — How to Choose Among Them**

Speakers: **J. Patrick Powers**, Vice President—Engineering Moretrench American Corporation, Rockaway, NJ
Joseph Minster, Senior Hydrogeologist and Project Manager, Ground/Water Technology, Inc., Denville, NJ

Program Hosts: **Dr. Ziyad I. Husami**, Chairman, Geotechnical Group

Fredric L. Plotnick

Chairman, Construction Group

The presentation will describe the various methods of ground water control, including pumping by wells, well-points, ejectors, sumps and ditches; cut-off of ground water by ground freezing, steel sheetpiling, slurry walls and slurry trenches, and grouting. The characteristics of the various methods will be described, together with the soil and water conditions for which they are best suited and the project considerations which may govern their use.

January Meeting

Date: **Thursday, January 27, 1983**

Joint Meeting with Structural Group.

See details under **Structural Group**

(continued on page 2)

A NOTE FROM THE PRESIDENT

One of our goals for this year is to make the operations of your Section more open to you. We have a Board of Directors and many operating Committees, as you can see from the accompanying organization chart on page 3. **Your participation on any of the Committees or Divisions is greatly encouraged.** Call any one of us to get in contact with the Chairpersons.

Presently, your Board of Directors is engaged in the process of nominating candidates for the Vice President of Zone 1 (Washington, DC to Maine). The term of office is for two years starting October, 1983. One nominee is **Chuck Pennoni**. We are asking for additional nominees for this position and that for the Director of District IV (Pennsylvania). The term of office of the latter is for three years starting October of 1983. The present District Director is Chuck Pennoni. If you are interested in serving in these positions, please call me at **895-2364**.

We have received communication from the National ASCE that they are seeking candidates for National Committees, namely: Professional Activities Committees (PAC), and Accreditation Board for Engineering and Technology (ABET) (formerly Engineering Council for Professional Development (ECPD) Accreditation Visitor Lists for undergraduate and graduate Civil Engineering Department programs. **Deadline for submission of candidates is February 1, 1983.** Notification is early summer. The four year term of committee membership begins October, 1983. The following PAC committee positions are open.

- Committee on Curricula and Accreditation (Educator).
- Committee on Engineering Management at the Individual Level.
- Committee on Engineering Management Activities.
- Committee on Minority Programs.
- Committee on Public Affairs and Legislation.
- Committee on Employment Conditions.

The first Committee is composed equally of educators and practicing engineers. Only the former Committee position is vacant at this time. Descriptions of the responsibilities of the Committees are in the ASCE Register.

The proper functioning of the ASCE and its numerous Committees is the responsibility of its members. **If you are interested in serving on the Philadelphia Section Committees or the National ASCE Committees listed above, or require telephone numbers of ASCE Officers, Committee and Division Chairpersons, please call me at 895-2364, or any Board member.** We will be happy to give you the information that you will need in making your decision to serve your Society and your Section.

Sincerely,

Bernard M. McNamee, Pres.
Phila. Section, ASCE

DECEMBER DINNER MEETING

(continued from page 1)

We live in a litigation-oriented society, and it is of critical importance for all engineers in public or in private practice, therefore, to recognize the current issues, practices and concerns that are related to professional engineering liability.

As the problem is multi-faceted, and as there are biases that can be developed after being exposed to one or another aspect of the subject, we assembled a blue ribbon panel to address the membership.

Mr. Fox, a partner in a general practice law firm that employs 120 lawyers, heads up a group of attorneys that specialize in litigation on behalf of practicing engineers and architects, and their relationships to their insurance companies.

Mr. Kumm manages the New York City office of a nationwide company that markets professional liability insurance programs.

Mr. Richter has the responsibility of directing a multi-disciplinary, worldwide management consulting firm that handles construction claims on behalf of many of the largest corporations.

The information that will be presented at this meeting may very well be instrumental in assisting you to make decisions that could protect and enhance your professional status and your income, as well as your accumulated wealth.

SPECIAL FEATURE:

TEMPLE UNIVERSITY NIGHT

The ASCE Student Chapter, Faculty and Alumni of the Civil Engineering Department of Temple University College of Engineering Technology will be honored at this meeting. All students, alumni and faculty are cordially invited to attend.

TECHNICAL GROUP ACTIVITIES

(continued from page 1)

Geotechnical

December Joint Meeting with Construction Group

— See Construction Group Notice —

January Meeting

Date: Tuesday, January 18, 1983

Engineers' Club—7:00 P.M.

Subject: **Uses of Numerical Modeling in Mining and Construction Dewatering Projects**

Speaker: **Dr. E. Scott Bair**, Hydrogeologist, Geotechnical Engineering Division, Stone & Webster Engineering Corporation, Cherry Hill, NJ

Program Host: **Dr. Ziyad I. Husami**
Chairman, Geotechnical Group

Refreshments are served

Mining and subsurface construction projects commonly require a water table to be lowered or an artesian head to be depressurized to ensure dry working
(continued on page 4)

PHILA. SECTION, ASCE OFFICERS 1982 - 1983

PRESIDENT

Bernard M. McNamee

VICE PRESIDENTS

William M. Malarkey John E. Durrant

SECRETARY

Albert M. Tantala

ASSISTANT SECRETARY

Edward Lutz

TREASURER

Charles J. Denny

TREASURER EMERITUS

Theodore Davis

MEMBERSHIP SECRETARY

David M. Barr, III

DIRECTORS

Francis J. Depman, Jr. Klaus Fuelleborn

Thomas J. Lauer Dennis Mohan

Charlene O'Connor Ira N. Pierce

Carl A. Vath, Jr.

(Reading Branch)

PAST PRESIDENTS

Kenneth J. Zitomer Joseph R. Syrnick

Frederic Roll

PUBLICATIONS COMMITTEE

Sidney Robin

Chairman and Editor of THE NEWS

Joseph R. Syrnick

Assistant Chairman and Associate Editor

Staff Writer

John E. Spitko, Jr.

Publications Coordinator

Albert M. Tantala

SEND COPY TO:

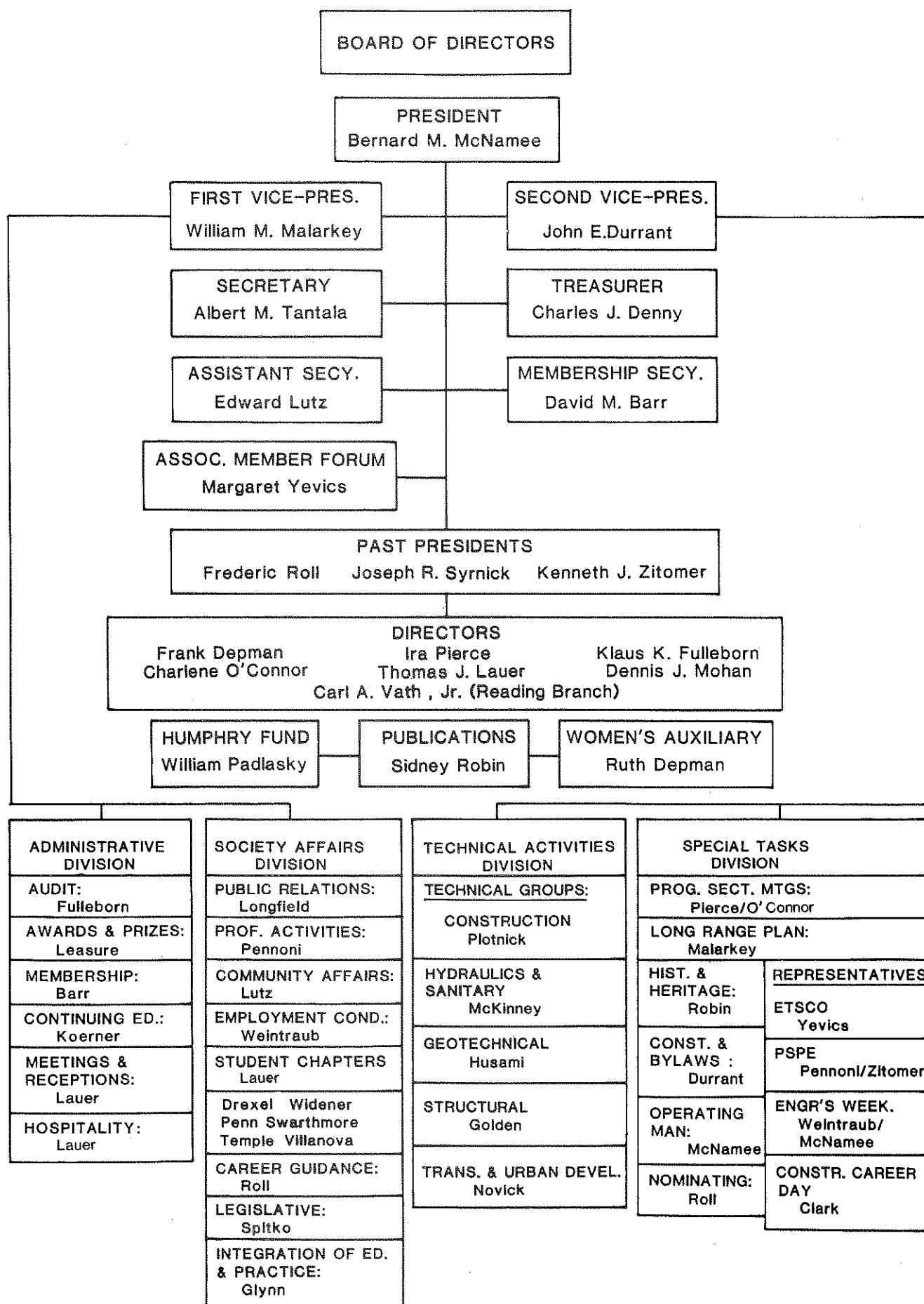
Sidney Robin

84 Nancy Drive

Richboro, Pennsylvania 18954

Phone: (215) 322-7464

**COPY DEADLINE FOR
JANUARY, 1982 ISSUE
DECEMBER 14, 1982**



... Holiday Greetings ...

The Editor and staff of THE NEWS, on behalf of the Officers and Board of Directors of the Philadelphia Section, ASCE, extend to the Members and their families Heartiest Wishes for a Joyous Holiday Season, and a Healthy, Prosperous and Fulfilling New Year.

THE FALL SOCIAL AT THE SHOEMAKER'S

The Annual Fall Social of the Philadelphia Section, ASCE, took place on Sunday, November 7, 1982 at the charming Haddonfield, N. J. home of **Mr. and Mrs. Edwyn L. Shoemaker, Jr.**, Ed has been a devoted, Active Member of the Section for many years; and his wife **Mary Elizabeth** is currently Vice President of the Women's Auxiliary. She has been very instrumental in the Auxiliary's success during her long period of membership.

More than fifty members and their wives enjoyed the warm hospitality of our competent hosts; cocktails; and appetizing delicacies and hors d'oeuvres prepared and contributed by the members of the Auxiliary. Also contributing to the success of the affair was a beautiful, crisp Fall day, which accented the multi-colored rear garden foliage and planting areas of the Shoemaker home.

The happy event was sponsored and arranged by the Section's Women's Auxiliary, in its continuing policy — started in 1976 — of "at home" Fall Social parties. Proceeds of the function are deposited into the Auxiliary's **Annette Estrada Memorial Scholarship Fund**, which was established to assist deserving civil engineering students at Drexel University, Villanova University and the University of Pennsylvania with annual monetary grants. Section members contributed modest fees to cover costs of the Social and to enhance the Memorial Fund.

Ed and Mary Elizabeth were the beneficiaries (as were all attendees) of a special dividend of assistance as they busily provided for the conveniences of their guests. Neighbor **Paul de Coursey, Jr.** graciously volunteered his services at the festivities as bartender. Because of his spectacular performance at the bar, Paul has been deluged with demands for his expert services at all future neighborhood social functions!!

The affair fit into the pattern of all its predecessors: it was a rousing success socially and financially. The Philadelphia Section's sincerest gratitude and congratulations are extended to the Shoemaker's for making the 1982 Fall Social a memorable day.

TECHNICAL GROUP ACTIVITIES

(continued from page 2)

conditions, to stabilize slopes, or to prevent rupture and heaving of mine and excavation floors.

Dr. Bair received his Ph.D. and M.S. degrees from The Pennsylvania State University and his B.A. degree from the College of Wooster. He is a Registered Professional Geologist and a member of the Editorial Board of the journal **Ground Water**. Since joining the Geotechnical Engineering Division at Stone & Webster in 1979, Dr. Bair has been responsible for performing ground-water modeling studies; designing dewatering and depressurizing systems, water-supply wells, and monitoring wells; and performing ground-water quality studies. He has worked previously for the United States Geological Survey and has taught in the Department of Geology and Geography at Bucknell University.

—o—

Structural

December Dinner Meeting

Date: **Thursday, December 9, 1982**

Engineers' Club—Cocktails: 5:30 p.m.

Dinner: 6:30 p.m.—Meeting: 7:30 p.m.

Subject: **Fabric Roof Structures**

Speaker: **David Geiger**, Principal, Geiger-Berger Associates, New York, NY
Program Host: **Stephen R. Golden**, Chairman, Structural Group

January Meeting

Joint Dinner Meeting with Construction Group

Date: **Thursday, January 27, 1983**

Engineers' Club—Cocktails: 5:30 p.m.

Dinner: 6:30 p.m.—Meeting: 7:30 p.m.

Subject: **Design and Construction of Soft Ground Tunnels**

Speaker: **Arun Patel**, Chief Structural Engineer of DMJM-Kaiser Engineers, the Joint Venture designing the Baltimore Subway.

Program Co-Hosts: **Fredric L. Plotnick**, Chairman, Construction Group
Stephen H. Golden, Chairman, Structural Group

Mr. Patel will discuss the general parameters of design and construction of soft ground tunnels, and will highlight these concepts with examples of the techniques being used on the Baltimore Subway.

ASCE DUES BILL AND TECHNICAL GROUP DETAILS

Section members will notice in the 1983 dues bill from National ASCE Headquarters, that the PHILADELPHIA (SECTION) DUES is itemized as \$12.00. This amount includes a \$1 assessment for membership in one Phila. Section Technical Group of your choice. **If you choose to be a member of more than one Group, please add \$1.00 for each Group.**

Also, because National's bill did not list the Technical Groups to which your \$1.00 payments were to be applied, **you are requested to get in touch with the Chairmen of the Technical Groups of your preference**, so that their membership lists can be classified.

The appropriate individuals to contact are the following:

Technical Group Liaison

John E. Durrant

(Section Vice President)

Phila. Water Department
Materials Testing Laboratory
7th St. & Lehigh Ave.
Philadelphia, PA 19133
(215) 686-1776 Ext. 23-246

Associate Member Forum

Margaret Yevics, President

215 S. 22nd St.
Phila., PA 19103
(215) 732-4218

Construction Group

Fredric L. Plotnick, Chairman

806 Hillton Lane
Elkins Park, PA 19117
(215) 487-1443 or (215) 843-7310

Geotechnical Group

Dr. Ziyad I. Husami, Chairman

Stone & Webster Engineering Corp.
3 Executive Campus, P.O. Box 5200
Cherry Hill, NJ 08034
(609) 482-3889

Hydraulics & Sanitary Group

Darlene McKinney, Chairman

O'Brien & Gere Engineers
1617 J. F. K. Blvd.
Philadelphia, PA 19103
(215) 564-4282

Structural Group

Stephen H. Golden, Chairman

Pennoni Associates, Inc.
1911 Arch St.
Philadelphia, PA 19103
(215) 561-0460

Transportation & Urban Development Group

David A. Novick, Chairman

Parsons, Brinckerhoff, Quade & Douglas, Inc.
1500 Chestnut St.
Philadelphia, PA 19102
(215) 988-0696

NOVEMBER MEETING

November 9, 1982 Engineers' Club
The Hyatt-Regency Walkway Collapse

Editor's Note: NBS REPORT AVAILABLE

The technical portion of the following writeup of the November 9th Section Meeting summarizes highlights of Dr. Pfrang's talk on the Hyatt-Regency Walkway Collapse. Members interested in obtaining the full National Bureau of Standards Report may do so by writing to: Superintendent of Documents, U.S. Government Printing Office, Washington, D.C. 20402. The full title of the report is: "Investigation of the Kansas City Hyatt-Regency Walkway Collapse" — Document No. SN003 — 003 — 02397 — 3. Enclose check for \$10.00 per copy.

An overflow crowd of about 250 members, guests and students attended the Phila. Section's second meeting of the 1982-1983 season, on the subject: "The Kansas City Hyatt-Regency Walkway Collapse. Dr. Edward O. Pfrang, Chief, Structures Division, Center for Building Technology, National Engineering Laboratory, National Bureau of Standards, Washington, D.C., was the principal speaker. Competent Program Host was Stephen H. Golden, Chairman of the Section's Structural Group. President Bernard M. McNamee presided.

Villanova Night

The spotlight focused on the ASCE Student Chapter and the Civil Engineering Department of Villanova University, which sent a contingent of more than 50 strong to the meeting. With his characteristic wit and mastery of anecdote, Student Chapter Faculty Advisor Dr. Lewis J. Mathers thanked the Section for its courtesies. He introduced the Villanova Contact Members: John Durrant (Section Vice President) and Marvin Zimbleman; extended special accolades to Charlene O'Connor (Section Director and Meetings Program Chairman), who did an outstanding job when she was President of the Villanova ASCE Student Chapter; faculty and alumni; and present officers of the Student Chapter — President, Ross Lodato; Vice President, Patrick Kinsley; Secretary, Laurie O'Donnell; and Treasurer, Steve Kellner; and the many students in attendance.

Student Chapter Busy Schedule

President Lodato reported on the Student Chapter meetings and speakers on varied technical subjects of great interest; the Annual Career Conference at Villanova; the Great 1982 Concrete Canoe Race (in which Villanova was awarded the best constructed concrete

NATIONAL ASCE HONORS THE NEWS

At the November 9, 1982 Phila. Section meeting, President McNamee announced the award by National ASCE to Philadelphia Section's THE NEWS as an "Outstanding ASCE Section Newsletter." The award certificate was signed by ASCE National President James R. Sims and Carl E. Nelson, Director of Field Services.

Phila. Section Chairman of Publications Sidney Robin accepted the Award on behalf of the staff of THE NEWS.

canoe — although, sadly, it did not win the race); field trips to important engineering projects; and social events (with emphasis on T.G.I.F. affairs!).

Improvements at the School

Dr. Mathers introduced Civil Engineering Department Head, Dr. Edward Wallo; and Dean of the College of Engineering, Dr. Robert Lynch, both longtime dedicated Active Members of the Section. Dean Lynch commented on the refurbishment and modernization of the engineering laboratories at Villanova. He thanked the Section for the invitation to the meeting and expressed his appreciation of the sharing of views. Dr. Lynch laments the national problem of chronic need for faculty refurbishment, an ailment from which Villanova is not immune. The multi-million dollar program for facilities and faculty enhancement is now well under way at the University.

Dr. Pfrang and the Tragic Failure

Steve Golden, who chaired the technical portion of the meeting as Program Host, introduced the principal speaker, Dr. Edward O. Pfrang, whose vivid description of the hours immediately preceding and following the walkway collapse at the Hyatt-Regency sent spines tingling. The tragedy occurred on July 17, 1981 at 7:00 P.M., when two of the three suspended concrete-deck walkways spanning the atrium of the main lobby of the hotel crashed to the main floor during the weekly tea dance. 114 persons were killed and 185 injured, including dancers on the main floor and spectators standing on the suspended walkways.

Dr. Pfrang said that structural failures are of major concern to engineers. An alarming number of collapses have occurred in the United States, some with potential for loss of life in the thousands. Dr. Pfrang headed the National Bureau of Standards (NBS) team which investigated the accident. His commen-

tary accompanying the excellent 16 mm film and slides intricately detailed all facets of the tragedy. There are currently pending \$3 billion of legal suits in connection with the accident, Dr. Pfrang informed us; and the NBS has been able to pin down what happened at Kansas City.

Main Points of the Investigation

Dr. Pfrang outlined the principal categories in the NBS study and analysis:

1. Site investigation.
2. Reconstruction of conditions.
3. Structural tests to determine and compute the capacity and response of the components by physical modelling.
4. Laboratory studies of materials.
5. Structural analysis.
6. Determination of the most probable cause of the collapse.

The video presentation showed the general scene of the atrium area literally minutes before the collapse, when public relations photographing was in progress. (It was an element of fate that the photographers were not present at the moment of collapse). The second and third floor walkways, four — 30' spans of end-supported steel box beams, intermediately suspended by three pairs of steel hanger rods anchored to the ceiling structure, failed. The third floor walkway was independently supported and did not collapse; but it was later removed and analyzed as part of the investigation.

A consecutive series of rendering perspectives — part of Dr. Pfrang's slide presentation — illustrated the development of the hanger rod failures. It explained in striking detail the aspects of the structural design, especially the connections of the rods to the main box beams.

The Painstaking Analysis

Dr. Pfrang described the removal of the fallen structures by NBS, part by part, for analysis as evidence material in the litigation proceedings; stress tests; and loading extrapolations on hanger rods connections to the box beams. In explaining the difficulty of estimating the people load on the walkways, the investigators had to consider verification of "wild dancing" and other stress-inducing periodic motion tendencies. Dr. Pfrang pointed out the comparisons of estimated design loads and NBS code for combination dead and live loads. To establish the capacity of the hanger rod connections, tests inducing failure were conducted.

Although the third floor walkway did not fail, it was removed after the col-

(continued on page 6)

NOVEMBER MEETING

(continued from page 5)

lapse of the other two walkways. NBS tests estimated that it was loaded to about 80% of ultimate stress.

The NBS Function Defined

A motion picture film of the laboratory tests of components of the actual structure clearly revealed the failures of the hanger rods connections to the steel box beams. The details of the testing were very impressive to the audience. In response to a question from the floor, Dr. Pfrang said that it is not the obligation of NBS to interview the structural designers (with the obvious objective of helping to determine possible blame on faulty design). That function is in the hands of the courts. The NBS function is to analyze and try to determine cause. The tests confirmed the likely candidacy of such connections for failure.

Conclusions

The NBS exhaustive analysis showed that:

1. The hanger rod connections were barely adequate to carry the structures' own dead weight, let alone the considerable combination of dead and live load.
2. The rods themselves met only about 50% of the tensile strength of Kansas City code requirements.
3. Tapes of dance music played just prior to the collapse revealed that the tempo was too slow to induce any excitation-caused periodic motion stresses caused by dancing on the walkways.

Questions and Answers

In a question and answer period limited only by the constraints of time, Dr. Pfrang observed that the obvious building code violations in the Hyatt-Regency catastrophe revealed that many cities do not require filing of computations with drawings. The P.E. seal on the drawings is sufficient.

The failure engendered major modifications in the procedures of building-plans approvals in Kansas City; permissible construction changes—principally by shop drawings, verbal orders and decisions by the general contractor or the subs; and inspection procedures in progress.

At the end of his superb presentation and the question and answer period, President McNamee and Mr. Golden awarded Dr. Pfrang the Section's Certificate of Appreciation and a copy of the Philadelphia Section's 1976 National ASCE Bicentennial Celebration Convention publication: "The History of Civil Engineering and Construction in the Delaware Valley."

1983 DANIEL W. MEAD CONTEST

FOR ASSOCIATE MEMBERS

The Daniel W. Mead Prize for Associate Members was established in 1939 to honor the memory and accomplishments of the 67th President of the American Society of Civil Engineers. The talents of many of the leaders of the profession were first recognized in previous contests for this significant professional honor. The current contest provides another opportunity for alert young civil engineers to further their professional development and gain national attention.

RULES

* Papers are to be written on: "LIMITED FIELD INSPECTION VERSUS PUBLIC SAFETY". Reports on certain civil engineering project failures indicate that one cause may be due to the owner attempting to save expenses by limiting the amount of inspection during construction. The end result can be catastrophic failure, with loss of life and property. If an owner-client refuses to accept the level of inspection that an engineer feels is necessary, what alternative approaches should the engineer consider or suggest in the interest of public safety? What is the engineer's responsibility and moral obligation if he provides inspection services at a level he considers to be insufficient? Many times, the first job of a graduate civil engineer is that of an inspector or resident engineer on a construction project. What is his responsibility to the employer in this regard? To the client?

* Authors must be Associate Members of the Society.

* Only one person can write each paper.

* Each Section can submit only one paper.

* Papers must contain no more than 2,000 words.

* One winner will be selected from each of the Society's four zones.

* The National winner, selected from the zone winners, will receive a wall plaque and a certificate.

* Winners will be invited to present their papers at the ASCE Annual Convention, Houston, October, 1983.

* The paper by the National winner will be published in CIVIL ENGINEERING or ISSUES IN ENGINEERING.

* By **FEBRUARY 1, 1983** seven copies of each paper must be submitted through the Section Secretary Albert M. Tantala to American Society of Civil Engineers, United Engineering Center, 345 East 47th Street, New York, New York 10017.

MEMBERS IN THE NEWS

Dr. Steven C. Batterman, Professor, Bioengineering Program, University of Pennsylvania College of Engineering and Applied Science, recently received the 1982 S. Reid Warren, Jr. Award for Distinguished Teaching from the College of Engineering and Applied Science at Penn.

The Award is given annually to an outstanding professor, selected by the students, who has guided and stimulated their intellectual growth and development.

*

Vincent J. Nero, P.E., has been promoted to the position of Vice President of the Philadelphia Industrial Development Corporation (PIDC). In making the announcement, Joseph M. Egan, Jr. Executive Vice President of PIDC praised Mr. Nero as "... an outstanding public servant. His contributions to the City of Philadelphia and to PIDC have won him the respect of his associates and colleagues ..."

Mr. Nero has spent 37 years in the public sector, 27 of which have been with the City. He joined PIDC in 1972 and most recently served as Director of Project Engineering.

*

Joseph A. Wintz, Jr., P.E., has joined the staff of A. W. Lookup Corporation, Structural Engineers, Philadelphia, in the position of Engineer.

Please note that the deadline for paper submittal is **February 1, 1983**. This is a change from prior years (usually May 1) that the Committee on Younger Members (CYM) believes it will allow more time for reviewing the papers prior to selecting the winners at their spring meeting. It will also provide extra time to develop publicity on the winners for **CIVIL ENGINEERING** magazine and the Fall Convention program. In the future, these announcements will be distributed in August; thus, providing six months notification.

Phila. Section Associate Members are urged to get to work on the Mead Competition. We are proud of our past winners and want to continue to be in the forefront.

Phila. Section Mead Competition winners are the following:

1974—John E. Spitko, National Award

1977—Joseph R. Syrnik, Zone I Award

1978—David S. Shaw, Zone I Award

1979—Haym Bemaroya, Zone I Award