

the news



Non-Profit Org.
U. S. POSTAGE
PAID
Philadelphia, Penna.
Permit No. 1845

PHILADELPHIA SECTION
AMERICAN SOCIETY OF CIVIL ENGINEERS

1317 Spruce Street, Philadelphia, PA 19107

VOL. 55 - 4

OUR 70th YEAR

January, 1983

JANUARY DINNER MEETING

Philadelphia Section, American Society of Civil Engineers
Joint Meeting with Women's Auxiliary, Phila. Section, ASCE

TUESDAY, JANUARY 11, 1983

Engineers' Club, 1317 Spruce Street, Philadelphia

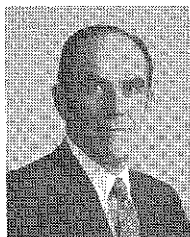
Cocktails — 5:30 P.M. Dinner — 6:30 P.M. Meeting — 7:30 P.M.

SUBJECT:

TRANSPORTATION THROUGH THE 1980's — Management, Ethics, Politics and Survival.

SPEAKER:

DR. THOMAS D. LARSON, Secretary, Department of Transportation, Commonwealth of Pennsylvania.



Dr. Larson has served as Secretary of the Department of Transportation since January 1979. He was designated 1982 "Construction Man of the Year" by *Engineering News Record*, a national magazine read weekly by 300,000 engineers and builders. In 1981, he served as Chairman of the Transportation Research Board, a national group of transportation experts working under the auspices of the National Academy of Sciences. Between May 1981-82, he was the President of the Northeast Association of State Highway and Transportation Officials (NASHTO).

(continued on page 2)

FEBRUARY DINNER MEETING

TUESDAY, FEBRUARY 8, 1983

Cocktails — 5:30 P.M. Dinner — 6:30 P.M. Meeting — 7:30 P.M.

SUBJECT:

PLANNING FOR CLEAN AIR IN PHILADELPHIA: The Potential of Public Transit

SPEAKER:

RON ROGGENBURK, Supervisor of Environmental Program; and Project Manager of Transportation and Air Quality Group, Delaware Valley Regional Planning Commission.

Can we achieve air quality improvement by making public transit more attractive in our City? Is SEPTA the solution to controlling auto emission pollution? These and other substantive, challenging questions will be addressed in Mr. Roggenburk's talk. **PLAN TO ATTEND.**

SPECIAL FEATURE:

SWARTHMORE COLLEGE NIGHT

Please call Mr. deKovacs at the Engineers' Club immediately (215 735-5234), for reservations.

STUDENTS — Plan to attend for Dinner (Half Price) or meeting after Dinner.

TECHNICAL GROUP ACTIVITIES

Construction

January Meeting

Date: **Thursday, January 27, 1983**

Joint Meeting with Structural Group.

See details under **Structural Group**

—o—

Geotechnical

January Meeting

Date: **Tuesday, January 18, 1983**

Engineers' Club—7:00 P.M.

Subject: **Uses of Numerical Modeling in Mining and Construction Dewatering Projects**

Speaker: **Dr. E. Scott Bair**, Hydrogeologist, Geotechnical Engineering Division, Stone & Webster Engineering Corporation, Cherry Hill, NJ

Program Host: **Dr. Ziyad I. Husami**, Chairman, Geotechnical Group

Refreshments are served

Mining and subsurface construction projects commonly require a water table to be lowered or an artesian head to be depressurized to ensure dry working conditions, to stabilize slopes, or to prevent rupture and heaving of mine and excavation floors.

Dr. Bair received his Ph.D. and M.S. degrees from The Pennsylvania State University and his B.A. degree from the College of Wooster. He is a Registered Professional Geologist and a member of the Editorial Board of the journal **Ground Water**.

February Meeting

Date: **Tuesday, February 15, 1983**

Engineers' Club—7:00 P.M.

Subject: **Ground-water Flow Modeling**

Speaker: **Dr. J. W. Mercer**, President, GeoTrans, Reston, Virginia

Program Host: **Dr. Ziyad I. Husami**, Chairman, Geotechnical Group

Refreshments are served

(continued on page 2)

TECHNICAL GROUP ACTIVITIES

(continued from page 1)

Structural**January Meeting****Joint Dinner Meeting with Construction Group**Date: **Thursday, January 27, 1983**

Engineers' Club—Cocktails: 5:30 p.m.

Dinner: 6:30 p.m.—Meeting: 7:30 p.m.

Subject: **Design and Construction of Soft Ground Tunnels**Speaker: **Arun Patel**, Chief Structural Engineer of DMJM-Kaiser Engineers, the Joint Venture designing the Baltimore Subway.Program Co-Hosts: **Fredric L. Plotnick**, Chairman, Construction Group
Stephen H. Golden, Chairman, Structural Group

Mr. Patel will discuss the general parameters of design and construction of soft ground tunnels, and will highlight these concepts with examples of the techniques being used on the Baltimore Subway.

February MeetingDate: **Thursday, February 24, 1983**

Engineers' Club Cocktails: 5:30 P.M.

Dinner: 6:30 P.M. Meeting: 7:30 P.M.

Subject: **Load and Resistance Factor Design (LRFD)**Speaker: **Dr. Ivan M. Viest**, Assistant Manager, Sales Engineering, Bethle-

hem Steel Corp., Bethlehem, PA

Program Host: **Stephen H. Golden**,
Chairman, Structural Group

Load and resistance factor design, a major advance toward rational design of steel framed buildings, is under consideration by the AISC Specification Committee. The presentation is in two parts. The first part deals with basic features of LRFD. The method is defined first and a generalized LRFD format developed. The discussion centers on sources of variability in design, on limits states and on probabilistic concepts underlying the numerical values of load and resistance factors. The numerical values are presented next and the results of a design evaluation of LRFD follow. The second part describes the development and the contents of the proposed LRFD design specification. The emphasis is on the strength of individual structural members: both steel and composite steel-concrete members are discussed.

Dr. Ivan M. Viest, a native of Czechoslovakia, was educated in his native country and in the United States where he received degrees from Georgia Institute of Technology and the University of Illinois. His past experience included engineering design, construction, teaching, consulting on problems in structural engineering and extensive research studies. Since joining Bethle-

hem he has been involved in diversified market development activities in all major steel consuming industries.

Dr. Viest is a member of the National Academy of Engineering and an honorary member of ASCE.

ACI TO CONDUCT SEMINARA full-day program on "Concrete Repair and Restoration" will be presented on **Thursday, February 17, 1983** at the Holiday Inn South, Essington, Pa., by the American Concrete Institute. Co-sponsors will be the Delaware Valley Chapter ACI and the Philadelphia Section ASCE.

Topics covered will include: Importance and Methods of a Condition Survey; Types of Repair Materials; Selection of Repair Method; Surface Preparation and Repair Techniques; Repair and Restoration of Steel Corrosion Distress.

For full details and registration forms please contact **Mike Boyle**, (215) 688-8517, or **Randy Cronin**, (215) 643-7363.**PHILA. SECTION, ASCE
OFFICERS 1982 - 1983****PRESIDENT**

Bernard M. McNamee

VICE PRESIDENTS

William M. Malarkey John E. Durrant

SECRETARY

Albert M. Tautala

ASSISTANT SECRETARY

Edward Lutz

TREASURER

Charles J. Denny

TREASURER EMERITUS

Theodore Davis

MEMBERSHIP SECRETARY

David M. Barr, III

DIRECTORS

Francis J. Depman, Jr. Klaus Fuelleborn

Thomas J. Lauer Dennis Mohan

Charlene O'Connor Ira N. Pierce

Carl A. Vath, Jr.

(Reading Branch)

PAST PRESIDENTS

Kenneth J. Zitomer Joseph R. Synchron

Frederic Roll

PUBLICATIONS COMMITTEE

Sidney Robin

Chairman and Editor of THE NEWS

Joseph R. Synchron

Assistant Chairman and Associate Editor

Staff Writer

John E. Spitko, Jr.

Publications Coordinator

Albert M. Tautala

SEND COPY TO:

Sidney Robin

64 Nancy Drive

Richboro, Pennsylvania 18954

Phone: (215) 322-7464

JANUARY DINNER MEETING

(continued from page 1)

Before becoming Transportation Secretary, Dr. Larson was a Professor of Engineering at the Pennsylvania State University as well as Director of the Pennsylvania Transportation Institute. He was also Chairman of the Transportation Advisory Committee, and, in this capacity, he headed the 1976 **New Directions for PennDOT** study. It is this study, with its recommendations on improving fiscal policy and operating strategies, that guides his present reform of the Department into a service-oriented agency.

Dr. Larson earned his B.S. (1952), M.S. (1959) and Doctorate (1962) in Civil Engineering at Penn State University, and has been affiliated with the University for the past 23 years (currently on leave of absence) as an administrator, instructor and researcher, including leaves for study and research in England and Sweden. He is the winner of the Sanford E. Thompson Award for contributions in the field of transportation materials research.

Dr. Larson's previous positions in private industry and public service included: Engineer—Herbert R. Imbt Corporation concentrating on highway construction. Designer—Pennsylvania Department of Forest and Waters concentrating on flood control. Engineer—U. S. Navy Civil Engineers Corps. Trained in officers candidate school and served as an Officer-in-Charge of construction and a public works officer. Engineer—Bethlehem Steel Corporation. Worked on water systems development, furnace rebuilding and plant development projects.

He is a Past Chairman - PennDOT Fiscal Review Task Force for the State of Pennsylvania. Task Force produced a series of far-reaching recommendations which formed the basis for the Thornburgh administration's transportation reform proposals.

SPECIAL FEATURE:**DREXEL UNIVERSITY NIGHT**

The ASCE Student Chapter, Faculty and Alumni of the Civil Engineering Department of Drexel University will be honored at this meeting. All students, faculty and alumni are cordially invited to attend.

**COPY DEADLINE FOR
FEBRUARY, 1983 ISSUE
JANUARY 11, 1983**

DECEMBER MEETING

December 14, 1982 Engineers' Club
Professional Engineering Liability

A good-sized and appreciative audience of Philadelphia Section, ASCE members and guests attended the December Meeting, which featured a panel discussion on the extremely timely and

ASCE PRESIDENT WIEDEMAN SECTION GUEST

The Philadelphia Section was privileged and honored to welcome as its special guest at the December 14, 1982 meeting, **John H. Wiedeman**, National President, American Society of Civil Engineers, and **Mrs. Wiedeman**.

Mr. Wiedeman, an engaging speaker and articulate story-teller, immediately won the audience with amusing anecdotes. He then discussed the much-heralded rebuilding and rehabilitation of the infrastructure of the United States. Decades of neglect have left roads, bridges, water and sewage systems, public transport, tunnels, canals, harbors and dams in critical need of replacement, maintenance and repair. ASCE naturally is greatly interested in, and will be intensely involved in the 20-year, \$900 billion program Mr. Wiedeman anticipates — in capital funding proposals, and in technical planning, design and construction.

President Wiedeman also discussed briefly recent initiatives in engineering performance (and failures). Prior to the Main Section Meeting, Mr. Wiedeman attended the Section's Board of Directors' Meeting, where he summarized many issues of National ASCE concern, but which also affect Local Section interests.

One of the most notable and controversial items of interest which Mr. Wiedeman discussed is the study by a special ASCE Committee to investigate the economic and physical feasibility of relocation of the National ASCE Headquarters out of New York to one of several applicant cities. Many Local Sections and regional or State-wide integrated Sections have for years complained of the need for a nationally-centralized Headquarters location, so that accessibility would be more convenient, particularly to the western and central States. The Committee's research and analysis are continuing and National Board of Direction action on the issue is contemplated.

Mr. Wiedeman graciously responded to many questions by Phila. Section Board members.

important subject: "Professional Engineering Liability." Three experts in the field were the panelists. They were: **Reeder R. Fox, Esq.**, Partner, Duane, Morris and Heckscher, Phila., Pa.; **Gregory D. Kumm**, Asst. Vice President, Schinerer Co., New York City; and **William P. Loew, Esq.**, Vice President and Corporate Secretary, Hill International, Inc., Willingboro, N. J. **Ira N. Pierce**, Advisor to Section Program Chairman **Charlene O'Connor**, was the skillful Moderator of the round-table presentation.

Temple University Night

The meeting highlighted the ASCE Student Chapter, alumni and faculty of the Civil Engineering Department of Temple University College of Engineering Technology. **Dr. Robert J. Stone**, Chairman of the Dept. of Civil Engineering and Construction, Faculty Advisor of the ASCE Student Chapter, and long a distinguished member of the Phila. Section, provided insight into the recent administrative changes at the University. Notable among these changes is the appointment of another dedicated and Active member of the Section, **Dr. John L. Rumpf** to the position of Executive Vice President, the second highest ranking officer at the University. Dr. Rumpf, who attended the meeting and was introduced by Dr. Stone, will be Acting President of Temple University whenever President Peter J. Liacouras is officially absent from campus.

Dr. Stone recognized new faculty members in the expanded Civil Engineering Department, who attended the meeting. He reviewed the new directions and changes in the engineering programs at the Ambler, Center City and Main North Broad Street campuses. The ultimate objective is to attain full accreditation as an Engineering College within a few years, including the B.S. and M.B.A. Degree recognition. He described the many expanded Civil Engineering specialties courses, including Soil Mechanics; Basic and Advanced Surveying, including Aerial Surveying; Subdivision and Surveying Law; Water Management Hydrology; E.I.T. review; and many others.

Dr. Stone is pleased to report that the Civil Engineering and Construction Department enrollment is growing. This year 272 students were under the jurisdiction of the Department.

Student Chapter Officers

Temple's ASCE Student Chapter Vice President, **Gregory Gionforaro**, substituting for President **Phillip Cohen** — who was unable to be present — in-

troduced Chapter members, who braved exam week obligations to attend the meeting, and alumni. Greg acknowledged the other officers: Secretary **Mark Ownesky** and Treasurer **Dan Dirshel**. He described the Chapter's ambitious technical programs and proposed events, including the popular Annual Concrete Canoe Race next Spring.

Greg eloquently appealed to the Senior Members of the Section for help in obtaining jobs, on behalf of his fellow students about to graduate. He praised the Civil Engineering Department classes, and the caliber of students and their teachers.

The Panel: Mr. Fox, the Lawyer

Each panel member presented statements on his specialty after introduction by Moderator Ira Pierce. The first speaker, **Reeder R. Fox, Esq.**, advised his listeners that, because of the almost prohibitive costs of insurance, all professionals — especially engineers — must be acutely conscious of liability-claim responsibilities. He summarized major considerations and precautions incumbent on the engineer at the commencement of a project:

1. **Contract Forms** — N.S.P.E. and A.I.A. Too often, carelessness in written agreements is the principal culprit where reinforcement of liability insurance protection is lacking.

2. **Purchase Orders**. Be alert to protective language in proposal letters, to avoid potential claims due to inherently faulty or dangerous products. Necessary warranties and guarantees must be incorporated in the purchase orders — to protect the engineer's service.

3. **Contractor's Obligation** — to indemnify (by insurance) Owner and Engineer against liability claims.

4. **Consultants**. Whether engineer to engineer or engineer to architect, the principal designer is responsible for his consultants' (agents') designs. The principal should investigate the consultant's liability coverage. Ideally, an Owner should contract directly with the consultant. This is particularly appropriate in soil-investigation analyses of site conditions and foundation characteristics.

5. **Specification of New Products**. You must not accept out of hand the salesman's touting of his product. The Law requires that the engineer is obliged to make a reasonable investigation of the characteristics and qualifications beyond the company manual's explanation of the product's properties and performance capabilities.

(continued on page 4)

DECEMBER MEETING

(continued from page 3)

Mr. Kumm — The Insurance Expert

Gregory D. Kumm, an official of one of the country's most renowned professional liability insurers, The Schinerer Co., N. Y., produced striking and frightening statistics on the numbers and sizes of claims during the past 20 years. Inflation, of course, has contributed to the escalation of dollar amounts of claims; but it is not responsible for the drastic increases in numbers and frequency of claims. These statistics, said Mr. Kumm, engender staggering increases in premiums. He described the types of claims:

- 25% involve principally bodily injury.
- 72% are construction workers' remedial claims and property damage.
- 3% are a combination of both of the above.

To reduce the severity of claims, Mr. Kumm suggests that the key is to disprove negligence. To do this, the Engineer must preserve the burden of proof of liability through good, clear, unambiguous contracts which define and recite limits of responsibility.

Mr. Loew — The Attorney and Engineer

The third panelist, **William P. Loew, Esq.**, substituted for the originally scheduled speaker, **Irvin E. Richter, Esq.**, President and Chief Executive Officer, Hill International, Inc., who was unable to attend and sent his regrets. Mr. Loew, Vice President and Corporate Secretary of Hill International, views the challenge from the dual pulpits of the legal advocate and the trained Mechanical Engineer. Too often, said Mr. Loew, controversies and claims arise because of failure of the architect and the engineer to define clearly responsibilities and ground rules vis-a-vis the Contractor and Owner. This obtains in contouring the duties and areas of design and analyses by the technicians; and specifying indisputable compensation parameters. Mr. Loew lists some principal elements in evaluating the merits of liability claims:

1. The facts of the claim.
2. The contract under which the parties are bound.
3. Laws of various jurisdictions. For example, some States interpret negligence procedures as functions of categories of law entirely different from those of other States or regions.

Mr. Loew described some actual claims

resulting from disputes in design plans and specifications; bidding and construction methods; negligence; standards of care and safety; failure to comply with local building codes (often caused by overzealous engineers employing design procedures which might be unacceptable to local code enforcement agencies). Cost escalation is often caused by engineer's delay in fulfilling his responsibilities expeditiously. This is manifest in cases where, after construction has begun, the contractor appeals for the engineer's approval of key phases of the work. These design delays may include competing specifications, approval of shop drawings, or even clarification of the basic plans for the project.

Round-Table Discussion

After the panelists presented their specialized views, Moderator Pierce conducted a round-table exchange in which they elaborated on some of their observations and commented on those of their colleagues. The discussion revealed the speakers' keen perception of the infinite numbers of problems in the vast sea of professional liability vulnerability. A prime focal point is the failure — even by veteran professionals — to prepare properly for the job, in all its phases. They overlook many necessary precautions in addressing the risks and ramifications inherent in a project, no matter how straightforward and uncomplicated early analysis and planning might appear. These precautions are, principally: documentation of facts; well-prepared organization of plans and specifications; and making reasonable, objective solutions to problems.

Audience Participates

The customary question and answer period followed the panelists' talks and the round-table discussion. Comments and questions covered the gamut of contingent professional liability situations. The panelists responded with forthrightness and clarity to the tough inquiries. Only the limitations of time terminated the dialogue.

Section President McNamee and Moderator Pierce presented each speaker the Section's Certificate of Appreciation and a copy of the Phila. Section's 1976 National ASCE Bicentennial Celebration Convention publication: "The History of Civil Engineering and Construction in the Delaware Valley."

This was an outstanding meeting. Mr. Pierce and the panelists are to be congratulated for arranging the excellent program.

SECTION PARTICIPATES IN ENGINEERS WEEK

Many Phila. Section, ASCE members will occupy official positions on the 1983 Engineers' Week Committee for the Delaware Valley.

1982 Engineer of the Year, Walter F. Spiegel, president of Walter F. Spiegel, Inc., Jenkintown, Pa., consulting engineering firm, has been named General Chairman for the 1983 Engineers' Week observance in Delaware Valley. His appointment was announced by **Daniel McCusker**, President of the Philadelphia Chapter, Pennsylvania Society of Professional Engineers, a Civil Engineer and Phila. Section member.

Also announced was the appointment of prominent Phila. Section member, **Norman G. Weintraub**, Chief of Water Conveyance of the Philadelphia Water Department as Vice Chairman of Engineers' Week. Immediate Past Chairman **Dr. Robert M. Koerner**, Professor of Civil Engineering at Drexel University, Past President of the Phila. Section and 1981 Engineer of the Year in Delaware Valley also continues on the Committee.

The 1983 observance will be held February 18-26, 1983 in conjunction with National Engineers' Week, which will focus attention on the theme "Engineers: Turning Ideas Into Reality." Some 50 engineering, scientific and technical societies sponsor the observance in Delaware Valley.

The local observance will include a career day for high school students, a science teachers' workshop, a competition among college engineering students for the best papers on the 1983 National Engineers' Week theme, awards for outstanding engineering achievements in Delaware Valley, and election of an Engineer of the Year.

McCusker, who is Manager of Capital Programs for the Philadelphia Water Department, also announced the appointment of Sub-Committee Chairmen and members. Phila. Section, ASCE members appointed include:

Lt. Col. Victor A. Marcus, of Cherry Hill, N. J., is College and University liaison; **Stanley J. Snarski, Jr.**, of Gloucester Township, N. J., Industry Fund-Raising Chairman; **Barry Leatherman**, of Delran, Technical Society Liaison; **Leo F. O'Connor**, (General Chairman of the 1983, ASCE National Spring Convention hosted by the Phila. Section) of Havertown, is Engineering Achievements Chairman and **Dr. Robert M. Koerner** is in charge of long range plan-

(continued on page 5)

ENGINEERS' WEEK
(continued from page 4)

ning. **John J. Gillespie** is in charge of printed programs; **Kenneth Zitomer**, Past President of the Phila. Section of Olney, heads the Student Papers Committee; **John J. McGarry**, of Drexel Hill, is in charge of arrangements for the Pennjerdel Council luncheon held each year to honor the Engineer of the Year.

Other Committee Members include **Dr. Richard Woodring**, Dean of the College of Engineering, Drexel University, of Erdenheim.

The Phila. Section, ASCE, is always an active participant in the Annual Engineers' Week and contributes to the General Committee to help finance the many activities.

Editor's Note: THE NEWS is indebted to Past President James J. McPhillips for the following tongue-in-cheek gem. The concluding section of the article follows (the first section appeared in the October, 1982 issue).

Beware The Wrath Of Abibarshim!

Recently excavated clay tablets shed new light on the most famous engineering failure in antiquity. Although some of the words are conjectural, this translation contains a clear message for modern engineers. Do you know someone who might benefit from this voice from the past?

By Paul Pendragon
Translator

And he did answer, "O Great and Merciful King, I be running short of bolt tighteners."

"Well, buy some more!"

"I have, O King, but each one either getteth used up or runneth off as soon as he learneth his trade."

"Which is?"

"The Makers of Engines have designed the granite facing panels such that no man hath arms long nor thin enough to reach the bolts. Thus each panel requireth that a bolt tightener crawl behind and affix the bolts."

"So?"

"So then he cannot get back out. O King, but is entombed there forever."

I, Abibarshim, did then call for a re-design which cost us three months and one thousand gold talents. But the days did pass and the tower had attained only four tiers in height. So I did go to the Chief Scribe to inquire why.

(continued on page 6)



Convention Update
The 1983 ASCE National Spring Convention
MAY 16 - 20, 1983
Franklin Plaza Hotel, Philadelphia

As mentioned in the November, 1982 issue of THE NEWS, the Phila. Section will host the National ASCE Spring Convention in May, 1983. The key to the Convention's successful accomplishment, as proved by the Bicentennial Year National ASCE Convention, held in Philadelphia in October, 1976, is the full cooperation and participation by the Membership of the Phila. Section; its affiliate, The Reading Branch; and its closely allied fellow Sections: Central Pennsylvania, Lehigh Valley, Pittsburgh, Delaware and New Jersey. Also, Universities, Colleges, Technological Schools and Institutes; Consulting Engineering firms and their staffs, individually practicing engineers and allied professionals and technicians; Building Contractors, Product Manufacturers, and Trade Associations.

BUT EVERY PHILADELPHIA SECTION MEMBER IS OBLIGED TO ACT INDIVIDUALLY AS AN ATTENDANCE PROMOTION REPRESENTATIVE OF THE GENERAL CONVENTION COMMITTEE. This means, of course, full participation with your spouse as Convention registrants for the full 5-day period. It means prevailing upon your associates and colleagues in the Civil Engineering community — and their spouses — to come and reap the benefits of a rewarding professional, educational and social experience.

In the coming months, THE NEWS and National ASCE publications (CIVIL ENGINEERING Magazine, The ASCE National Newsletter, periodic ex-

planatory flyers, brochures and registration data and forms), will provide full details of the Technical Sessions and Seminars; Continuing Education Programs; spouse activities and hospitality accommodations; City tours and area road trips; special Breakfasts, Luncheons and Dinners; entertainment functions; Student Activities; and Post-Convention events and programs.

Months of planning by the Philadelphia Section Convention Committee, under the expert General Chairmanship of **Leo F. O'Connor** and his staff of dedicated assistants, are rapidly formulating the final design and blueprint of the spectacular and exciting Convention coming to Philadelphia. Leo and the Committee are particularly fortunate, too, in benefiting by the full participation, as Special Consultant, by **James W. McPhillips**, General Chairman of the memorable 1976 National ASCE Convention hosted by the Philadelphia Section. Jim McPhillips' contribution of his extraordinary talents will alleviate the burdens of arranging the myriad details involved in the planning and execution of this enormous and important function.

SO — MARK YOUR CALENDAR AND SCHEDULE YOUR TIME NOW TO TAKE FULL PART IN THE 1983 ASCE NATIONAL SPRING CONVENTION, MAY 16 - 20, 1983, FRANKLIN PLAZA HOTEL, PHILADELPHIA — HOSTED BY THE PHILADELPHIA SECTION, ASCE.



WOMEN'S AUXILIARY

Mary Rennis Hosts Xmas Party

In a pleasant departure from former years, the Women's Auxiliary of the Phila. Section, ASCE, Christmas Party was something special this year. It was hosted by Auxiliary Member **Mary (Mrs. Frank G.) Rennis**, at her beautiful Villanova home, which was well-decorated for the occasion. The event was almost strictly social, with business discussion at a minimum. A delicious lunch was served, gifts were exchanged, Christmas carols were sung, and general fun was

enjoyed in an atmosphere filled with the spirit of the Holiday Season.

Everyone present enjoyed the party, and the Auxiliary is deeply grateful to Mary (and Frank) for their generosity and good will.

January Meeting with Main Section

There will be no Women's Auxiliary Luncheon-Meetings in January and February, 1983, but members are urged to attend the Joint Dinner Meeting with the Main Section on **Tuesday, January 11, 1983**, at the Engineers' Club (see full details on Page one).

BEWARE THE WRATH

(continued from page 5)

"O King, we have been awaiting, lo, these many months, the columns of Corinthian marble for the fifth tier."

"Is marble from Corinth so hard to find, then?"

"Nay, Sire, but the Corinthian stone cutters make columns only in heights which be whole numbers of cubits. And the Makers of Engines have specified columns which be twelve cubits plus eleven-seventeenths part of a cubit. Such columns are not to be found in all of Corinth as an off-the-shelf-item."

"Well, let's just change the drawings and round them off to thirteen cubits even."

"Nay, Sire, for they must match unto the interior columns, which are bought pre-cut from Ionia and which we have aplenty."

"Okay, we'll cut the Ionian columns down and go unto twelve cubit columns all around."

"Nay, for the Ionian columns be all of one piece with their capitals. To shorten them would mean cutting off their capitals."

"What in the name of Marduk is wrong with that? We can just fit new capitals on top of the shortened columns!"

"Nay again, Sire. The entire structure unto the very top is designed around monobloc columns. To add new capitals would weaken the fifth and higher tiers and require a complete redesign!"

I, Abibارشim, King of Kings, avouch that Makers of Engines, for all their craft, know not how to fly. For surely the Chief of the Makers of Engines and all his men would have flown down, had they known how, from the fourth level of my tower, from which parapet I, Abibارشim, King of Kings, had them flung.

Therefore have I, Abibارشim, King of Kings, created this Code and ordered it displayed at the Coffee Machine and all other places where hangeth out the Designers of Buildings and Makers of Engines.

The Code Of Abibارشim**I**

Once thou decidest what name to call a thing, that shall be its name forever after, until eternity passeth. Nor shalt thou call any other thing by that name, for each thing shall have a name unto itself.

II

And in like manner shall be the enumeration of each thing.

T&UD Group — Drexel Joint Meeting

The Phila. Section Transportation and Urban Development Division will hold a joint meeting with Drexel University at 3:30 p.m. on **January 21st, 1983** at Bldg. 3, Room 340, 32nd and Chestnut Streets. **Dr. Robert Taaswell**, Director Urban Transportation Center, University of Illinois at Chicago Circle will speak on the subject **New Concerns in Urban Transportation Centers**.

III

Continue not to design a thing unto perfection, for, verily, an ounce of timeliness is more valuable than a pound of perfection. Once thou hast approved a design, go not back and improve it, unless of necessity most dire.

IV

Cover not thy tracks but make thy calculations plain, that those who follow thee may trace any error to its beginning and thus set it and all its brethren upon the path of righteousness.

V

And mock not the necessary papyrus work, for it is the handmaiden of what thou createst in stone and iron. Completest all thy papyri as thou goest and hoardest them not as a surprise for manufacturing.

VI

Attendest first to that which hath the most importance. Waste not time fixing thy wind to heavy papyrus with wire.

VII

He who designeth without a plan is like he who rusheth forth into darkness without a torch. Rush not ere thou knowest whither, for there are many snares and pitfalls in the dark, and wild beasts to reach up and bite thine ass or camel on the path named Critical.

VIII

Specify not odd-ball sizes and kinds of things, but design unto standards, that the scribes may buy stuff off-the-shelf and dabble not with specials.

IX

Designest not assemblies which require four arms to put together or operate. Verily, the guy we hire in these days hath not four arms but ten thumbs.

X

Remember well that all which thou designest shall be a balance of time and cost and quality and function. If thou attendest not to all four, then miserable shall be thy lot and brief thy employment (unless thou knowest how to fly).

*Production Engineering***ASCE DUES BILL AND TECHNICAL GROUP DETAILS**

Section members will notice in the 1983 dues bill from National ASCE Headquarters, that the PHILADELPHIA (SECTION) DUES is itemized as \$12.00. This amount includes a \$1 assessment for membership in one Phila. Section Technical Group of your choice. **If you choose to be a member of more than one Group, please add \$1.00 for each Group.**

Also, because National's bill did not list the Technical Groups to which your \$1.00 payments were to be applied, you are requested to get in touch with the **Chairmen of the Technical Groups of your preference**, so that their membership lists can be classified.

The appropriate individuals to contact are the following:

Technical Group Liaison**John E. Durrant**

(Section Vice President)

Phila. Water Department
Materials Testing Laboratory
7th St. & Lehigh Ave.
Philadelphia, PA 19133
(215) 686-1776 Ext. 23-246

Associate Member Forum**Margaret Yevics, President**

215 S. 22nd St.
Phila., PA 19103
(215) 732-4218

Construction Group**Fredric L. Plotnick, Chairman**

806 Hillton Lane
Elkins Park, PA 19117
(215) 487-1443 or (215) 843-7310

Geotechnical Group**Dr. Ziyad I. Husami, Chairman**

Stone & Webster Engineering Corp.
3 Executive Campus, P.O. Box 5200
Cherry Hill, NJ 08034
(609) 482-3889

Hydraulics & Sanitary Group**Darlene McKinney, Chairman**

O'Brien & Gere Engineers
1617 J. F. K. Blvd.
Philadelphia, PA 19103
(215) 564-4282

Structural Group**Stephen H. Golden, Chairman**

Pennoni Associates, Inc.
1911 Arch St.
Philadelphia, PA 19103
(215) 561-0460

Transportation & Urban**Development Group****David A. Novick, Chairman**

Parsons, Brinckerhoff, Quade &
Douglas, Inc.
1500 Chestnut St.
Philadelphia, PA 19102
(215) 988-0696