

# the news



FIRST CLASS MAIL

Presorted  
1st Class Mail  
U.S. Postage Paid  
Philadelphia, PA  
Permit No. 1845

PHILADELPHIA SECTION  
AMERICAN SOCIETY OF CIVIL ENGINEERS  
1317 Spruce Street, Philadelphia, PA 19107

Vol. 60 - 3

OUR 74th YEAR

December, 1987

## Greetings of the Season

The Editor and staff of THE NEWS, on behalf of the Officers and Board of Directors of the Philadelphia Section, ASCE, extend to the Members and their families Heartiest Wishes for a Joyous Holiday Season, and a Healthy, Prosperous and Fulfilling New Year.

### DECEMBER DINNER MEETING

Philadelphia Section, American Society of Civil Engineers

**TUESDAY, DECEMBER 8, 1987**

Location: DREXEL UNIVERSITY, Grand Hall, Creese Student Center  
South West Corner of 32nd and Chestnut Streets, Philadelphia, PA  
Beer - 5:30 P.M. Dinner - 6:30 P.M. Meeting - 7:30 P.M.

**SUBJECT:**  
THE AMERICAN CONSULTING ENGINEERS COUNCIL PEER REVIEW PROGRAM

**SPEAKERS:**  
DELON HAMPTON, Ph.D., P.E., President, Delon Hampton Associates, Consulting Engineers, Washington, D.C.

ERIC L. FLICKER, P.E., President, Treasurer and Chief Executive Officer, Spotts, Stevens and McCoy, Inc., Wyomissing, PA  
*(Continued on Page 2)*

FOR RESERVATIONS FOR MAIN SECTION MEETING AT DREXEL UNIVERSITY **DECEMBER 8, 1987**, PLEASE CALL MS. SUZANNE JENKINS, DEPT. OF CIVIL ENGINEERING, (215) 895-2364 BEFORE 5:00 P.M. FRIDAY, DECEMBER 4, 1987. **RESERVATIONS ARE REQUIRED.** (ROAST PRIME RIB OF BEEF DINNER) CHARGE: \$15.00; STUDENTS \$8.00. PARKING AT GARAGE SOUTHSIDE MARKET STREET BETWEEN 33RD & 34TH STREETS (ENTRANCE FROM LUDLOW STREET)

### JANUARY DINNER MEETING

Philadelphia Section, American Society of Civil Engineers

**TUESDAY, JANUARY 12, 1988**

ENGINEERS' CLUB, 1317 Spruce St., Philadelphia  
Cocktails - 5:30 P.M. Dinner - 6:30 P.M. Meeting - 7:00 P.M.

**SUBJECT:**  
WASTE MANAGEMENT IN THE 80'S AND BEYOND — CHALLENGES AND OPPORTUNITIES FOR THE CIVIL ENGINEER

**SPEAKER:**  
AMIR A. METRY, Ph.D., P.E., Vice President, Roy F. Weston, Inc., West Chester, PA  
*(Continued on Page 2)*

FOR RESERVATIONS FOR THE **JANUARY 12, 1988 MEETING AND ALL MAIN SECTION MEETINGS**, EXCEPT WHERE NOTED OTHERWISE, PLEASE CALL PRESIDENT NORMAN WEINTRAUB'S SECRETARY, PAULA, AT (215) 592-6209.  
Dinner Meal Charge: ASCE Member - \$15.00; Non-Member - \$16.00; Students - \$8.00  
STUDENTS: If you prefer, you are welcome to attend the Meeting after Dinner, at no charge.

### About the December Meeting

The American Consulting Engineers Council Peer Review Program is endorsed by the American Institute of Architects, the American Society of Civil Engineers, the California Council of Civil Engineers and Land Surveyors, the National Society of Professional Engineers; and two major insurance firms: The Design Professionals Insurance (DPIC) Companies, and Victor O. Schinnerer Co., Inc., Underwriting Managers, which examine professional liability, considered in the program. It analyzes professional office policies, comparable to a regular medical physical checkup, in *your* office, at your request, and the "doctor" is a team of design professionals just like you. The team will examine overall management, project management, technical competence, finance marketing, and human resources.

After evaluation, their confidential report will give you a good idea of your firm's health, the areas in which it is strong and those that might need shoring up.

The Association of Soil and Foundation Engineers has had a Peer Review Program of this type since 1978. In 1982, the Chicago Chapter, AIA, initiated a program very similar to ACEC's. The results from both programs have been outstanding in improving the professional practice of the individual firms and their membership as a whole.

### GOUDA NOMINATED FOR ENGINEER OF THE YEAR

The Philadelphia Section, ASCE, Board of Directors has unanimously nominated Moustafa A. Gouda, P.E., Principal, Lippincott Engineering Associates, Delanco, NJ, and Chairman of the Section's Geotechnical Group, for the Award as Delaware Valley 1988 Engineer-of-the-Year. Last spring, Mr. Gouda was honored as the Philadelphia Section Civil Engineer of the Year, in ceremonies at the Section's Annual Dinner-Dance at Park Towne Place.

The New Jersey Chapter, National Society of Professional Engineers, and the Delaware Valley Chapter, American Society of Highway Engineers, also are supporting Mr. Gouda's nomination for Engineer-of-the-Year.

In a letter to Phila. Section Geotechnical Group members, announcing the November 10, 1987 Main

## IMPORTANT!! 1987 - 1988 MEETING NOTICES

MARK YOUR CALENDAR for the dates of the remaining Philadelphia Section, ASCE monthly meetings and social functions, as follows:

### All Dinner Meetings

Cocktails - 5:30 P.M.      Dinner - 6:30 P.M.      Meeting - 7:30 P.M.

### Tuesday, February 9, 1988

LOCATION - SHERATON VALLEY FORGE HOTEL, ROUTE 363 & FIRST AVE., KING OF PRUSSIA, PA

Subject: **The Safe Drinking Water Act**

Speaker: **Fred Moracco, Chief, Division of Water Supply, PA Department of Environmental Resources**

**University of Pennsylvania and Villanova University Night**

### Tuesday, March 8, 1988 - Engineers' Club

Subject: **ASCE Manual of Professional Practice**

Speaker: **James Poirot, P.E., Chairman of the Board, CH2M-Hill**

### Tuesday, April 12, 1988 - Engineers' Club

Joint Meeting with the Philadelphia Post, Society of American Military Engineers, (S.A.M.E.)

Subject: **Renovation of the Frankford Elevated**

Speaker: **Douglas J. Fritz, Esq., P.E., Construction Manager, Philadelphia Transit Consultants**

**Temple University Night**

### Saturday Evening, May 14, 1988

**Annual Spring Dinner Dance - Colleen's, Park Town Place**

Arranged by the Women's Auxiliary

## GOUDA NOMINATED

(Continued from Page 1)

Section Meeting on the subject: "The Role of Civil Geotechnical Engineers in Environmental Management," Mr. Gouda acknowledges his appreciation of the recognition: "... Of course, it is an honor for me personally to be nominated, but I feel that it is even more significant for the Geotechnical Engineering profession to have someone from its ranks so creditably acknowledged. . . "

The Phila. Section has solicited support for Mr. Gouda's election from all of the Engineering Societies in the Delaware Valley. President Norman G. Weintraub appointed the following delegates to the Engineer-of-the-Year Election Committee Meeting which was held at the Philadelphia Electric Co. Building, 23rd and Market Sts., on November 16, 1987: Susan Lior, J. Richard Weggel, David Perri, and Robert Wright.

### PHILADELPHIA SECTION AMERICAN SOCIETY OF CIVIL ENGINEERS

#### OFFICERS 1987-1988

#### PRESIDENT

Norman G. Weintraub

#### VICE PRESIDENTS

Susan K. Lior (President-Elect)

J. Richard Weggel

#### SECRETARY

Robert M. Wright

#### TREASURER

Charles J. Denny

#### ASSISTANT TREASURER

Thomas J. Branigan

#### MEMBERSHIP SECRETARY

David J. Perri

#### DIRECTORS

Joseph E. Gaudet      Michael J. Gabor

Stephen H. Golden      Moustafa A. Gouda

D. Kelly O'Day      Edward J. Lutz

Frank W. Sarns, Jr.

(Reading Branch)

#### PAST PRESIDENTS

John E. Durrant      Ira N. Pierce

Albert M. Tantala

#### President - Norman G. Weintraub

City of Philadelphia

Water Department

One Reading Center

Philadelphia, PA 19107

(215) 592-6209, 686-1635, 228-7087

#### Secretary - Robert M. Wright

City of Philadelphia

Department of Streets

920 Municipal Services Building

Philadelphia, PA 19102

(215) 686-5538

#### PUBLICATIONS COMMITTEE

Sidney Robin

Chairman and Editor of THE NEWS

Joseph R. Symnick

Assistant Chairman and Associate Editor

Staff Writers

Dave Perri

Michael Peleszak

Publications Coordinator

Albert M. Tantala

SEND COPY TO:

Sidney Robin

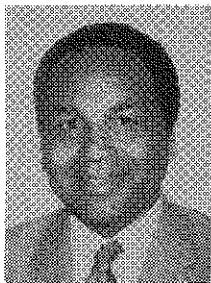
64 Nancy Drive

Richboro, PA 18954

Phone: (215) 322-7464

## DECEMBER DINNER MEETING

(Continued from Page 1)



Delon Hampton, Ph.D., P.E., received his B.S.C.E. at the University of Illinois (1954); M.S.C.E. (1958) and Ph.D. (1961) at Purdue University. He is a Registered Professional Engineer in 16 states and the District of Columbia. He has been President of Delon Hampton & Associates, Chartered, since 1973, responsible for the direction of the firm's various engineering and design service operations in Civil, Structural, Geotechnical, Environmental (including Sanitary) Engineering and Planning. He previously was employed by various Consulting Firms, and in private practice in major public works projects. In addition, Dr. Hampton has been engaged in teaching as a Professor and Research Engineer at Howard University (1968 - 1985), Kansas State

University (1961 - 1964) and at various Research Facilities. He has published numerous papers on Soil Mechanics and Foundations subjects, Tunnel and Subway Construction, Underpinning, etc. In addition to ASCE, Dr. Hampton is a member and has been an Officer of the American Association of Engineering Societies, the American Consulting Engineers Council, the American Public Transit Association, the Society of American Military Engineers, and many others. He is the recipient of honors and awards from Universities, Transit Associations, prestigious Who's Who publications and engineering Honor Societies.

(Continued on Page 3)

## JANUARY DINNER MEETING

(Continued from Page 1)

The status of the civilian radioactive waste disposal program; and technological advances in many waste management projects and proposals throughout the United States, will be discussed. Emphasis will focus on the important role of the Civil Engineer in these undertakings.

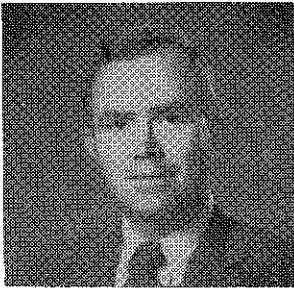
**SPECIAL FEATURE: SPRING GARDEN COLLEGE NIGHT**

**HAVE YOU MAILED  
YOUR DUES CHECK TO  
NATIONAL HEADQUARTERS?**

**COPY DEADLINE  
FOR  
JANUARY 1988  
ISSUE  
DECEMBER 8, 1987**

## DECEMBER MEETING

(Continued from Page 2)



**Eric L. Flicker, P.E.**, earned his B.S.C.E. (1971 - *summa cum laude*), and M.B.A. (1976) at Lehigh University. He is a Registered Professional Engineer in Pennsylvania, Delaware, Maryland, Virginia and West Virginia; and a Registered Land Surveyor and Certified Sewage Enforcement Officer in Pennsylvania. As President, Treasurer and C.E.O. of his firm, Mr. Flicker is responsible for general management and operations of the Corporation, including execution of corporate plans. He has been affiliated with Spotts, Stevens & McCoy, Inc. since 1966, in positions of escalating charge from Student Aide to Chief Administrative Officer. He assumed his present top positions with the firm in 1985.

In addition to A.S.C.E., Mr. Flicker is a member and has been an officer of the American Consulting Engineers Council; National Society of Professional Engineers; Tau Beta Pi, National Engineering Honorary Fraternity; and Chi Epsilon, National Honorary Civil Engineering Fraternity.

### SPECIAL EVENT: Presentation of Life Membership Certificates

NOTE: Rescheduled from March 8, 1988 meeting

### SPECIAL FEATURE: SWARTHMORE COLLEGE NIGHT

The ASCE Student Chapter, Faculty and alumni of the Civil Engineering Department of Swarthmore College will be honored at this meeting. All students, faculty and alumni are cordially invited to attend.

## NOVEMBER MEETING

November 10, 1987 Engineers' Club  
By Sid Robin, Editor and Dave Perri, Staff Writer

### Civil/Geotechnical Engineers and Environmental Management

A gratifying turnout of Philadelphia Section, ASCE, members and guests braved heavy rain and threatening snow and sleet to attend the second regular meeting of the 1987-88 season. **M. Salah Abdelhamid, Ph.D., P.E.**, Vice President, Roy F. Weston, Inc., Consulting Engineers, West Chester, PA was principal speaker and his subject was: "The Role of Civil/Geotechnical Engineers in Environmental Management."

### Widener University Night

The ASCE Student Chapter, Faculty, Alumni and Civil Engineering Department of Widener University were highlighted at the meeting. Student Chapter Faculty Advisor, **Dr. Ronald L. Mersky** reviewed the quantitative and qualitative elements of the Department's progress. *Quantitatively*, encouraging growth in enrollments in both the undergraduate and graduate major B.S.C.E. student Civil Engineering curricula has characterized the budding new Department. *Qualitatively*, asserted Dr. Mersky, there has been significant development in the programs and specialties of the Department of Civil Engineering. He introduced the Chairman of the Department, **Dr. Charles Bartholomew**, and Faculty Lecturer, **Prof. Vicki Brown**.

### Student Chapter President Miluski Speaks

Widener ASCE Student Chapter President **Michael Miluski** introduced his fellow officers in attendance: **Scott Jesseman**, Vice President; **Evio Panichi**, Treasurer; **Joe Bertoni**, Secretary; **John Mullin**, Social Chairman; 1987 graduate officers, **Tony Guerrieri**, President; and **Chris Bergeman**, Vice President; and the sizable delegation of Student Chapter members and alumni present at the meeting.

President Miluski reviewed the activities of the busy Chapter, which included: speakers on structural analysis, ship construction and other specialties; the Concrete Canoe Project; the new Tee-shirt ("Civil Engineers Do It In Dirt"); and other interesting pursuits. Widener participates in

the Annual Pennsylvania-Delaware Regional Student Chapter Conference and Paper Competition; and it has inaugurated a program of interaction between students and alumni in technical and social programs.

### Sue Lior Introduces Dr. Abdelhamid

Section Vice President Susan K. Lior introduced **M. Salah Abdelhamid, Ph.D., P.E.**, Vice President Roy F. Weston, Inc., the principal speaker of the evening.

Since the enactment of the National Environmental Protection Act of 1970, Geotechnical Engineers have come to the forefront of the profession, asserted the November meeting's distinguished guest. He expounded on the impact which the myriad of environmental legislation has had on the role of the Geotechnical Engineer. The training, functions, career development and special skills required in this rapidly expanding field were examined in detail by Dr. Abdelhamid.

### Environmental Management

Environmental management was defined as: "The planning and implementation of policies, systems and activities that ensure the optimal use of available resources without unacceptable impact on public health and the environment." Elements of effective management of environmental media, explained Dr. Abdelhamid, include pollution control, planning and the monitoring of public health, operations and the environment.

### Remediation Phase

Dr. Abdelhamid outlined the steps necessary for the successful abatement of environmental problems. The initial step consists of risk assessment and site investigation to determine the nature and extent of contamination. Integral to this process is site reconnaissance, and sampling and testing of the soil, water, air and biota. The abatement process proceeds to the design phases where possible remedial measures are evaluated and ranked. Various approaches available to the Geotechnical Engineer include containment, removal, treatment, and monitoring/maintenance.

### Mr. Finger Presents Applicable Examples

Roy E. Weston, Inc. Senior Geotechnical Project Engineer, **Frank Finger, P.E.**, was then introduced by Dr. Abdelhamid, and he completed

## BRIDGE LIGHTING PROJECT WINS AWARD

A highlight of the Philadelphia Chapter, P.S.P.E. monthly meeting at the Engineers' Club on November 5, 1987 was the naming of the *Outstanding Engineering Achievement - 1988* by the Engineering Societies in the Delaware Valley, sponsored by P.S.P.E.

Presentations for the Award were made by representatives on behalf of two great engineering projects in Philadelphia: "The Southwest Water Pollution Control Plant Expansion" and "The Benjamin Franklin Bridge Lighting Project."

**Leonard Bernstein, P.E.**, Design Coordinator, Philadelphia Water Department, who coordinates the design and construction phases of the City's \$1 billion water pollution control expansion program for the three plants, gave an in-depth explanation — accompanied by excellent slides — of the Southwest Project.

**Steve Izénour**, Senior Associate, of the world-renowned Philadelphia-based design firm of Venturi, Rauch and Scott Brown, Architects — assisted by **Malcolm Woolen**, Architect, of the same firm — made an outstanding illustrated presentation on behalf of the Bridge Lighting Project, which was sponsored by a Special Committee of the PENJERDEL Council. Also contributing to the presentation was **Barney McQuade**, Project Manager, The Pangborn Company, Principal Contractor on the lighting job. **Gretchen Toner** represented the Bridge Lighting Project Committee for PENJERDEL.

As written up in a feature article in the November, 1987 issue of THE NEWS, the Philadelphia Section, ASCE, played an important role in implementing, supporting and publicizing the spectacular lighting project, and in documenting the History, Heritage and Legacy of the Benjamin Franklin Bridge as the manifestation of one of Civil Engineering's great achievements.

The Benjamin Franklin Bridge Lighting Project won the Principal Award as the *Outstanding Engineering Achievement - 1988*. The Southwest Water Pollution Control Plant Expansion Project was cited as the *Notable Engineering Achievement in Environmental Engineering*.

The Awards will be featured as part of the 1988 Engineers Week Celebration, February 19-27, 1988, and will be formally presented at the Engineers Week Banquet on February 27th. (Watch for full details of Engineers Week activities in coming issues of THE NEWS).

Judges on the Awards Committee were: **Leo O'Connor**, Chairman; **Allan Blanchard**, **John Donch**, **Joseph Krulikowski** and **Richard Mulford** — all officers of the Philadelphia Chapter, P.S.P.E., or the Engineers Week Committee.

the discussion with detailed case studies of successful environmental projects. For each case study presented, Mr. Finger skillfully defined the existing environmental problem and explained the developed remedial measures.

In recognition of his outstanding, articulate discourse on this complex and timely subject, Dr. Abdelhamid was presented the Section's Certificate of Appreciation by President Weintraub. Norm also complimented Mr. Finger for his enlightening contribution to the discussion.

## ASCE DUES BILL AND TECHNICAL GROUP DETAILS

Section members will notice in the 1987 dues bill from National ASCE Headquarters, that the PHILADELPHIA (SECTION) DUES is itemized as \$13.00. This amount includes assessment for membership in one Phila. Section Technical Group of your choice. *If you choose to be a member of more than one Group, please add \$1.00 for each Group.*

Also, because National's bill did not list the Technical groups to which your \$1.00 payments were to be applied, *you are requested to get in touch with the Chairman of the Technical Groups of your preference*, so that their membership lists can be classified.

The appropriate individuals to contact are the following:

### Liaison

*J. Richard Weggel*

Drexel University  
Dept. of Civil Engineering  
Philadelphia, PA 19104  
(215) 895-2355

### Younger Member Forum

*Anthony M. Micciolo, Chairman*

1141 Dyre Street  
Philadelphia, PA 19124  
(215) 744-8767

### Construction

*Fredric L. Plotnick, Chairman*

806 Hillton Lane  
Elkins Park, PA 19117  
(215) 487-1443

### Engineering Management

*Chairman position available.*

*If interested, please contact*

*J. Richard Weggel*

*(See "Liaison" above).*

### Geotechnical

*Moustafa A. Gouda, Chairman*

Lippincott Engineering Associates  
501 Burlington Avenue  
Delanco, NJ 08075  
(609) 461-1239

### Structural

*Timothy H. Haahs, Chairman*

Walker Parking Consultants  
2 Penn Center Plaza  
Philadelphia, PA 19102  
(215) 751-9555

### Transportation and Urban Development

*William T. Thomsen, Chairman*

Urban Engineers, Inc.  
300 N. 3rd Street  
Philadelphia, PA 19106-1193  
(215) 922-8080

### Water and Environmental Engineering

*Farid F. Mansour, Chairman*

United Engineers & Constructors, Inc.  
30 S. 17th Street  
Philadelphia, PA 19101  
(215) 422-3376

## PENNONI APPOINTED TO REGISTRATION BOARD

Philadelphia Section, ASCE, Past President Celestino R. "Chuck" Pennoni, P.E., P.L.S. is the newest member of the PA State Registration Board for Professional Engineers, appointed to serve the remaining term of James R. Madara who resigned because of his transfer to California. Pennoni, a graduate of Drexel University with B.S. and M.S. degrees in Civil Engineering, is a registered engineer in ten states and a registered land surveyor in Pennsylvania and New Jersey.

He is the recipient of numerous awards including 1986 Engineer of the Year from the Pennsylvania Society of Professional Engineers and is listed in Who's Who in Technology ('83), in Government ('76 & '77) and in the East ('69).

He is Vice Chairman of the Delaware County Authority, past president of the Consulting Engineers Council of Pennsylvania, president of the Engineers' Club of Philadelphia, past vice president of the American Society of Civil Engineers, chairman of the Drexel University Civil Engineering Department Advisory Committee and the Sweet's Engineering Advisory Board.

Pennoni is founder, chairman of the board and president of the engineering consulting firm of Pennoni Associates, Inc. His Board appointment will expire November 17, 1988.

The Philadelphia Section congratulates Chuck on his newest honor.

## STORMWATER DETENTION COURSE

"Urban Stormwater Detention — Design, Operation and Maintenance" is the subject of a two-day professional development course scheduled in the Newark, NJ area, at the Holiday Inn-Fort Lee, December 10-11, 1987. The course is intended for Civil Engineers and Environmental Engineers, working in urban drainage, flood control and environmental protection. The hydrology method and software emphasized in the course is that developed by the U.S. Soil Conservation Service; namely, "Urban Hydrology for Small Watersheds, TR-55."

Continuing education units (1.3 CEU's) will be awarded by a certificate.

Speakers will be **Herbert G. Poertner**, President of Stormwater Consultants and **Chin Y. Kuo**, Professor of Civil Engineering at Virginia Tech in Blacksburg, VA. Dr. Kuo is a certified professional hydrologist. He has degrees in Civil Engineering from National Taiwan University and the University of Missouri, and a M.E., M.A. and Ph.D. from Princeton University. Mr. Poertner has a B.S. in Civil Engineering and a M.S. in Applied Mechanics from Washington University. Both speakers are experienced Hydrologists and Registered Professional Engineers.

Advance registration is required and may be accomplished by mailing a check or purchase order to **Stormwater Consultants**, 3 Westchester Court, Bolingbrook, IL 60439. The \$295.00 fee includes tuition, course materials, printed certificate of completion and refreshments. For further information, contact Stormwater Consultants; phone (312) 739-3810.

## ASCE COMMITTEE OPENINGS FOR 1988

ASCE National Headquarters announces the following Zone I (which includes the Philadelphia Section jurisdiction) 1988 Professional Division Committee Service Opportunities. Philadelphia Section members who are interested in applying for appointments should contact President **Norman G. Weintraub** (see page 2 of this issue of THE NEWS). All Section nominations for vacancies should be received by the *Education and Professional Affairs Department*, ASCE headquarters, New York City, before February 1, 1988. All appointments begin on August 1, 1988:

### EDUCATION DIVISION EXECUTIVE COMMITTEE (EDEX)

1. Committee on Career Guidance (CCG).
2. Committee on Containing Professional Development (CCPD). Non-faculty member requested.
3. Committee on Student Services (CSS). Faculty member requested.

### ENGINEERING MANAGEMENT DIVISION EXECUTIVE COMMITTEE (EMDEX)

1. Engineering Management Activities Committee (EMAC).

### MEMBER ACTIVITIES DIVISION EXECUTIVE COMMITTEE (MADEX)

1. Committee on Public Affairs and Legislation (CPA&L)

### PROFESSIONAL PRACTICE DIVISION EXECUTIVE COMMITTEE (PRODEX)

1. Committee on Professional Registration (COPR). One member with State Board of Regulation experience and two members without such experience requested.
2. Committee on Standards of Practice (COSP).

### WOMEN'S AUXILIARY

#### *December Meeting — Christmas Party*

The next monthly Luncheon-Meeting of the Phila. Section Women's Auxiliary will be held at the **Engineers' Club on Wednesday, December 16, 1987, 12:00 noon**. It is the Annual Christmas Party. As is customary, business discussion will be held at an absolute minimum. Pollyannas will be exchanged and the Holiday spirit will prevail. All Auxiliary members and their guests are cordially invited to attend.

*There will be no Women's Auxiliary Meetings in January or February, 1988. The next regular Luncheon-Meeting will be on Wednesday, March 16, 1988.*

*Full details will appear in the March 1988 issue of THE NEWS.*

THE NEWS NOW  
ACCEPTS ADVERTISING.  
FOR RATES AND INFORMATION,  
PLEASE CONTACT:  
SIDNEY ROBIN  
CHAIRMAN OF PUBLICATIONS  
64 NANCY DRIVE  
RICHBORO, PA 18954  
(215) 322-7464