

# the news



FIRST CLASS MAIL

Presorted  
1st Class Mail  
U.S. Postage Paid  
Philadelphia, PA  
Permit No. 1845

PHILADELPHIA SECTION  
AMERICAN SOCIETY OF CIVIL ENGINEERS  
1317 Spruce Street, Philadelphia, PA 19107

Vol. 61-1

Celebrating Our  75th Anniversary

OCTOBER, 1988

## OCTOBER DINNER MEETING

Philadelphia Section, American Society of Civil Engineers

**TUESDAY, OCTOBER 11, 1988**

ENGINEERS' CLUB, 1317 Spruce St., Philadelphia

Cocktails - 5:30 P.M. Dinner - 6:30 P.M. Meeting - 7:30 P.M.

**SUBJECT: RECONSTRUCTION OF THE FRANKFORD ELEVATED**

**SPEAKER: JAMES W. PALMER, P.E.** - Director, Frankford Elevated Reconstruction Project  
Southeastern Pennsylvania Transportation Authority

Reconstruction of a two-track guideway elevated rail rapid transit line under traffic is a planning, engineering, financial, construction management and transit operational challenge.

James W. Palmer holds a B.S. in Civil Engineering from Queens University, Kingston, Ontario and Graduate Studies at Union College, Schenectady, New York. He is a registered Professional Engineer in Pennsylvania. He has been employed as Project Engineer and Track Supervisor at the National Railroad Passenger Corporation (AMTRAK) where he directed track maintenance programs such as tie renewals, in-track welding, and weld switch installation. As a Director of Civil Engineering for the consulting company of McCormick-Taylor he was responsible for the design and construction of several major highways, the crane rail system for the Port of Wilmington, DE and the Delaware Avenue Track Rehabilitation.

Mr. Palmer rejoined SEPTA in April, 1987 in the present position of Director, Frankford Elevated Reconstruction Project. This project is an eight year program designed to reconstruct 5-1/4 miles of elevated structure, the installation of new track, signal/communications and traction power systems, while maintaining weekday train service. Included in this project is the reconstruction 10 passenger stations, as well as, the Frankford Terminal, a multi-modal transit facility that is the eastern terminus of the line. The rehabilitation of this 1922 structure, which carries 100,000 passenger trips per day, is the largest mass transit rail reconstruction project in the United States today; estimated cost \$650 million.

(Continued on Page 2)

## NOVEMBER DINNER MEETING

Philadelphia Section, American Society of Civil Engineers

**WEDNESDAY, NOVEMBER 9, 1988**

ENGINEERS' CLUB, 1317 Spruce St., Philadelphia

Cocktails - 5:30 P.M. Dinner - 6:30 P.M. Meeting - 7:30 P.M.

**SUBJECT: DESIGN, LOGISTICS AND CONSTRUCTION OF THE PHILADELPHIA FLOWER SHOW**

**SPEAKER: EDWARD L. LINDEMANN**, Staff Horticulturist/Flower Show Designer, The Pennsylvania Horticultural Society

Mr. Lindemann will escort us behind the glitter of the water fountains and the glow and color of the flowers and shrubs. By means of slides, movies, soundtrack and commentary, he will describe the nuts and bolts, as well as the art and engineering science of creating pattern and order from the chaotic challenge of planning and executing the largest annual indoor horticultural exhibition in the world.

**SPECIAL FEATURE: VILLANOVA UNIVERSITY NIGHT**

FOR RESERVATION FOR ALL PHILADELPHIA SECTION REGULAR MONTHLY MEETINGS - UNLESS OTHERWISE NOTED - PLEASE CALL PRESIDENT SUE LIOR'S SECRETARY, BETHANN, AT (215) 925-3196.

Dinner Meal Charge: ASCE Member \$16.00; Non-Member - \$17.00; Students - \$8.00

STUDENTS: If you prefer, you are invited and welcome to attend the Meeting after Dinner, at no charge.

## TECHNICAL GROUP ACTIVITIES

### Construction Group

#### October Meeting

Date: Tuesday, October 25, 1988

Engineers' Club

Meeting at 7:00 P.M.

**SUBJECT: CONSTRUCTION MANAGEMENT FOR THE VINE STREET EXPRESSWAY PROJECT**

**SPEAKER: Joseph P. McAtee, P.E.**, Project Manager for the Construction Management Joint Venture Firm of Gaudet-O'Brien Associates and Urban Engineers, Inc.

**Program Host: Fredric L. Plotnick, Esq., P.E.**, Chairman, Construction Group

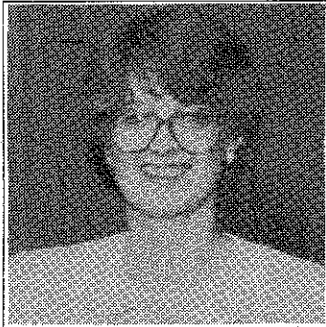
Mr. McAtee will discuss the construction management techniques utilized and field problems experienced on the Vine Street Project from the start of construction in the fall of 1986 to the present time. Included in the presentation will be a discussion of the impediments encountered and overcome together with an overview of the physical limits of the project.

Mr. McAtee is a Vice President for Urban Engineers, Inc., a Registered Professional Engineer in Pennsylvania, and a graduate of Drexel University. He has been with Urban Engineers, Inc. for 21 years and in addition to being an ASCE member, he is a participating member of the ASHE and a member of the Construction Management Association of America and American Arbitration Association. In addition to the Vine Street Project, Mr. McAtee also oversees construction management duties for the Joint Venture on the Schuylkill Expressway Reconstruction Project for PA DOT.

Prior to starting construction management services on the expressway projects, Mr. McAtee was Resident Engineer for four (4) contracts of the commuter Tunnel Construction in Philadelphia, as well as serving as Program Testing Coordinator for train service start-up as that project neared completion. He was also involved with the design and construction of Philadelphia International Airport's IIA Development Program which involved integrating the Airport's site expansion into the local and PA DOT roadway sys-

(Continued on Page 2)

## THE PRESIDENTS MESSAGE



Welcome back to the start of a new ASCE year. I trust with the excruciating heat we've had this summer, most of you are looking forward to the Fall and the start of a lot of new activities. So far this Summer Officers, Technical Group and Committee Chairpersons, Board Members and interested members have been planning and organizing a host of activities, as well as undertaking administrative necessities, to make this a satisfying year. These people have been working very hard for the Society, I ask that YOU give them your support and encouragement - the best way, by attending. Sid Robin, our ever faithful and award-winning editor, has been keeping on everyone to make sure events are listed in the newsletter well in advance.

You may have noticed from the banner of "THE NEWS,"

that this is the 75th year for the Philadelphia Section. As the banner says, we plan on celebrating. And we should. We have a lot to be proud of, and frankly, can show our thanks by wholeheartedly kicking up our heels and celebrating. One of the things I'm especially excited about is the plans underway for a big Spring picnic. Our 75th year chairperson, Tim Haahs (Walker Consultants, 751-9555), is planning activities for everyone, including the kids. As you can imagine, Tim needs Committee members to assist in the planning, scheduling, work, etc.

Our biggest undertaking for the anniversary will be the publication of a 75th Anniversary Yearbook highlighting the Section's achievements and its members. Over the 75 years since its founding, the Philadelphia Section has grown to be an outstanding organization and one of the most active of all the ASCE Sections. Through an era of crisis and change, we can be proud of the fact that our members have remained loyal, active, and true leaders in the engineering profession.

Speaking of volunteers, we welcome everyone with a desire to participate. Needless to say, there are some very positive reasons to become active. I personally have found my involvement very rewarding. It has given me a chance to meet and become friends with people of similar interests, to work towards maintaining civil engineering as a profession, to give young engineers a hand, and to become involved with the engineering community, not only in the Delaware Valley, but far beyond here. Now that I've got you psyched, give me (R.F. Weston, 925-3196) or President Elect Rich Weggel (Drexel U, 895-2355) a call. This year especially, we're going to need your help.

Lastly, ASCE National has moved into a trial use and comment period for the *Manual of Professional Practice, Quality in the Constructed Project: A guideline for Owners, Designers and Constructors*. To date, over 1,000 professionals were involved in its writing and preliminary review. National has requested that we put it into use and report back on our experiences. The purpose of the Manual is to provide guidelines and recommendations for owners, design professionals, and constructors on how to provide quality in constructed projects; to clarify and define the roles, responsibilities and limits of authority; to offer general and specific definitions of critical words and phrases; and to stress the importance of concepts and practices that improve quality in constructed projects. The Manual is the result of ASCE's dictum to improve quality prompted in part by the Kansas City Hyatt Regency failure in 1981. The need for the Manual has surfaced as the courts have come down hard on the engineering community for many of the failures we've witnessed recently. It is apparent that there is confusion concerning roles and responsibilities as was evidenced by Senator Albert Gore's subcommittee that looked into building failures. The Committee hypothesized that one person should be responsible for the integrity of the entire construction project. That's nonsense. Design professional, owners, and constructors all have responsibilities. The Manual stresses that producing quality is a team effort, and it lists numerous responsibilities for all project team members. The Manual should serve as a guideline to establish and abide by standards of conduct. ASCE requests that we familiarize ourselves with the Manual and start incorporating it into our practices. This is a trial use and comment period and is our chance to participate in the development of these standards. (Order forms will be at the sign-in table at the October meeting). Once again, welcome back!

Sincerely,  
Susan K. Lior, President  
Philadelphia Section, ASCE

## OCTOBER DINNER MEETING

(Continued from Page 1)

Mr. Palmer is responsible for all phases of this project including its design, construction contracts and planning. He is also responsible for its financial budget and cost control. He establishes procedures and objectives for project personnel along with directing the activities of the engineering support and construction management consultants.

### SPECIAL FEATURE: SPRING GARDEN COLLEGE NIGHT

The ASCE Student Chapter, Faculty and Alumni of the Civil Engineering Department of Spring Garden College will be honored at this meeting. All students, faculty and alumni are cordially invited to attend.

## Technical Group Activities

(Continued from Page 1)

tems of the Industrial Highway and I-95 in that area.

### Geotechnical and Water/Environmental Group (Combined Program for 1988-89)

#### October Meeting

Date: Tuesday, October 18, 1988 - 7:00 P.M.  
Drexel University (Lounge beside the Mandel Theater, Creese Student Center, Chestnut St. betw. 32nd & 33rd Sts.)

(Continued on page 3)

### PHILADELPHIA SECTION AMERICAN SOCIETY OF CIVIL ENGINEERS

#### OFFICERS 1988-1989

##### PRESIDENT

Susan K. Lior

##### VICE PRESIDENTS

J. Richard Weggel (President-Elect)

Francis J. Depman

##### SECRETARY

Robert M. Wright

##### TREASURER

Thomas J. Branigan

##### MEMBERSHIP SECRETARY

Joanne M. Anovick

##### DIRECTORS

Michael J. Gabor

Timothy H. Haahs

Moustafa A. Gouda

William T. Thomsen

Edward M. Wallo

Alvin Zion

Kin Chung (Reading Branch)

##### PAST PRESIDENTS

Ira N. Pierce

Albert M. Tantala

Norman G. Weintraub

#### President - Susan K. Lior

PSI/Weston  
1818 Chestnut Street  
Suite 1004  
Philadelphia, PA 19107  
(215) 925-3196

#### Secretary - Robert M. Wright

City of Philadelphia  
Department of Streets  
920 Municipal Services Building  
Philadelphia, PA 19102  
(215) 686-5538

#### PUBLICATIONS COMMITTEE

Sidney Robin

Chairman and Editor of THE NEWS

Joseph R. Symick

David J. Perri

Associate Editors

Publications Coordinator

Albert M. Tantala

#### SEND COPY TO:

Sidney Robin  
64 Nancy Drive  
Richboro, PA 18954  
(215) 322-7464

#### COPY DEADLINE

FOR

NOVEMBER 1988

ISSUE

OCTOBER 11, 1988

## Technical Group Activities

(Continued from Page 2)

**Subject:** Wanaque South Reservoir Development and Rollcrete Dam Thermal Modeling and Construction

**Speaker:** Eric Ditchey, Project Engineer, O'Brien & Gere Engineers, Inc., Blue Bell, PA

Arrangements for members to have dinner before the meeting, if desired, are being made, and details will be given with the two Technical Group mailings. For further information, please call Chairman Dave Ritter, at (215) 495-0303; or Dr. Joseph P. Martin, at (215) 895-2363.

This year, the Geotechnical and the Water/Environmental Technical Groups of the Philadelphia Section, ASCE, will run a joint program. Many recent and ongoing projects in the area require an integrated application of expertise from all three areas: water resources, environmental and geotechnical. A working knowledge of environmental practice is essential for Geotechnical Engineers waste disposal and site cleanup, and much of the local environmental work is also in the soil. The interaction between geotechnical and water-resources development is, of course, traditional. When representatives of the Technical Groups compared plans for the coming year, it was evident that many members would find themselves in a conflict as to which Group meeting to attend.

Consequently, a carefully selected combined program has been planned. Each meeting topic blends emerging new technology with traditional civil engineering practice, such that a lively and informative discussion is expected to follow each presentation. Watch THE NEWS for all future announcements of meetings.

### Engineering Management Group Re-Forming

The Engineering Management Group of the Phila. Section welcomes members who would like to participate in this broad-based Group. Please contact Group Chairman Edward F. Koehler at (215) 557-1603 during working hours or see Ed at the October 11th Section Meeting.

## APRIL JOINT

### ASCE-SAME MEETING

April 12, 1988

Engineers' Club

An almost capacity crowd of more than 130 members, guests and students attended the Annual Joint Meeting of the Philadelphia Section, ASCE and the Philadelphia Post, Society of Military Engineers (SAME), hosted this year by ASCE at the Engineers' Club. Topic of the Meeting was an explanation and discussion of one of National ASCE's most ambitious and widely studied publications: "The ASCE Manual of Professional Practice for Quality in the Constructed Project," which is destined to be of preeminent interest in the engineering, architectural and construction industry communities. Principal speaker was James W. Poirot, Chairman of the Board, CH2M Hill, Inc. S.A.M.E. Welcomed

Philadelphia Section President Norman G. Weintraub, presiding over the final regular Section meeting of his tenure, welcomed our distinguished guests, the Philadelphia Post, SAME. Vice President of SAME, Lt. Colonel William Quinby, spoke on behalf of his organization, thanked ASCE for the privilege of the Joint Meet-

ing, and conducted some business pertinent to SAME.

### Temple University Night - Dr. Stone Tribute

The meeting honored the ASCE Student Club, Faculty and Alumni of the Civil Engineering Department of Temple University, whose members attended the meeting in impressive numbers. President Weintraub led the audience in a moment of silence tribute to the late Robert J. Stone, who died on Easter Sunday, April 3, 1988 after suffering a heart attack two weeks earlier. Dr. Stone had been Faculty Advisor to the Temple ASCE Student Club for many years. (See obituary article on Dr. Stone elsewhere in this issue of THE NEWS).

### Prof. Jochum Discusses Programs

Professor Stephen G. Jochum reviewed major developments in the Civil and Construction Engineering Technology program at Temple, which now boasts nearly 200 students. The University expects full accreditation soon for its Civil Engineering course. He described current and proposed curricula in various specialties, such as Environmental and Geotechnical Engineering and others.

### THE ASCE Student Club

Temple Student Club President Gregory R. Galvelis thanked the Section for its courtesies and introduced his fellow Club officers: Chairman, Paul Sykes; Vice President, Anthony Tomczk; Treasurer, Mercedes Flores; Secretary, Michael Barbetta; Faculty Advisor Dr. Robert Haythornthwaite.

Mr. Galvelis reported on the Club's busy activities, which included guest speakers and field trips on major construction projects, such as the recently rehabilitated Lit Brothers Building on Market Street, Philadelphia, into a vibrant multi-purpose commercial enterprise; participation in the Annual Concrete Canoe Races on the Schuylkill River; and the Club's close second place prize in the ACI-sponsored Concrete Beam Competition in February, 1988.

### Mr. Poirot on The Manual

Mr. Poirot, Chairman of the Board of CH2M Hill, Inc., has headed the Task Committee responsible for developing the Manual. This monumental project, aided by over 5,000 volunteer contributors and reviewers at an expenditure of \$250,000, is one of the most ambitious undertakings in ASCE history.

Mr. Poirot explained that the main objective of the Manual is "to identify and assign professional responsibilities and to break down adversarial relationships between team members on constructed projects." The Manual, developed with 17 recurring themes providing a thread of continuity of thought, stresses support of the concept of continuing responsibility of the design engineer during construction and start-up, and support and participation of peer review. Also heavily emphasized is communication, teamwork, coordination and organization.

Principles leading to the Manual's development were recognized at the Engineering Foundation Conference in 1983. In 1986, when ASCE made the decision to sponsor its development, a Steering Committee was appointed and an outline developed. For Volume One, 40 authors were selected and two reviewers assigned for each author. The manuscript then went through three

## WOMEN'S AUXILIARY ASCE

### 31 GLORIOUS YEARS

*Editor's Note: The following excellent article was written - at THE NEWS' request - by Mrs. Joseph A. (Pat) Schulcz, one of the Charter Members of the esteemed Philadelphia Section, ASCE affiliate which - after more than three decades of existence as the social mainstay of the Section, as well as a cordial fellowship club in its own right - no longer will function as a formal organization.*

*The Section thanks and salutes this marvelous association of members' wives and friends for its splendid accomplishments in arranging, planning and fulfilling the social agenda of the Section through the many happy and productive years. We wish them well as the Auxiliary members and their guests continue to meet periodically, informally, to maintain the camaraderie which they have nurtured and developed since the establishment of the Auxiliary in 1957. We invite and welcome Auxiliary members to attend and participate in all Section technical meetings and functions which are announced in the monthly issues of THE NEWS.*

In the Spring of 1957, Mrs. Joseph (Toni) Farrell and Mrs. Francis (Sara) Friel gathered a small group of us together at luncheon at the Bala Golf Club to plan the founding of an Auxiliary to the Men's Section. After several meetings, we enthusiastically selected our first slate of officers headed by Annette Estrada as President. With the help of the Men's group we contacted wives of members and interested them in joining. A constitution was adopted and our main purposes were:

1. To further social contacts among members.
2. To cooperate with the Officers and Committees of the Philadelphia Section ASCE when requested.
3. To carry on other germane projects and activities authorized by the Executive Board.

The sudden death in an automobile accident of our President Annette Estrada shocked and saddened all of us. As a memorial for Annette, we decided to donate a money prize to the Civil Engineering Departments of three local Universities - Drexel, Penn and Villanova. The prize would be given to a member of the Junior Class with the highest average. Over the years we have disbursed almost \$30,000 for these Annette Estrada Awards.

In order to raise funds for this project, we had an annual Card Party or Game Night. This continued for many years until 1976 when Eleanor and Ted Davis offered their lovely home for a Cocktail Party. This was such a social and financial success that we continued this at the homes of various members until 1987.

Over the years we have had many interesting programs and memorable Christmas parties. Our most outstanding yearly event was the May Dinner Dance which we arranged to honor the incoming officers of the Men's and Women's Groups. It was always a festive affair with table decorations and door prizes donated by our Auxiliary.

Decreasing membership had become a serious problem and in the Spring of 1988, we voted, with the greatest regret, to disband our Auxiliary. We have developed warm friendships over the years and we hope to continue this by meeting informally at the Engineers' Club on the third Wednesday of the month.

(Continued on Page 6)

## SECTION'S 1988 AWARDS PRESENTED AT SPRING SOCIAL

By David J. Perri, Associate Editor

The Philadelphia Section's annual Civil Engineering Awards were presented during the Gala Spring Dinner Dance at Colleen's Restaurant and Towne Hall on May 14, 1988. In a year that saw the illumination of several significant Civil Engineering Landmarks in Philadelphia, the Awards Ceremony was appropriately themed, "Civil Engineers Bring Good Things to Light." Seven eminent local Engineers were honored for their contributions, service, and leadership as guiding lights in the Civil Engineering profession.

### Engineer of the Year

**Kenneth J. Zitomer**, prominent leader and Past President of the Philadelphia Section was honored with the Section's highest award. A graduate of the University of Pennsylvania, Ken began his distinguished career as a Track Supervisor on the Reading Railroad. In 1953, he accepted a position with the Philadelphia Water Department, advancing quickly through the ranks to Chief of Construction and then to Chief of Design. Promoted to Chief Engineer, Mr. Zitomer was responsible for the successful operation of the Department's Design, Construction, Projects Control and Material Testing Divisions.

Under his direction the Water Department embarked on an \$800 million project to upgrade the City's three large water pollution control plants. This massive pollution abatement project has dramatically improved the water quality of the Delaware and Schuylkill rivers. Mr. Zitomer topped off his exemplary career with the Water Department in 1980, when he was appointed Water Commissioner.

Mr. Zitomer has also served as President of LJC Mining and Development Company; a magnesium ore mining and mill operation in Arkansas. Currently, Mr. Zitomer is enjoying dual careers as Staff Consultant for Pennoni Associates and as Adjunct Professor of Civil Engineering at Drexel University. A dedicated member of several professional societies, Ken has served as President of the Philadelphia Chapter of the Pennsylvania Society of Professional Engineers and the Delaware Valley Chapter of the American Public Works Association.

### Young Civil Engineer of the Year

The Young Civil Engineer of the Year Award was presented to **Dr. Ronald L. Mersky**, Assistant Professor of Civil Engineering at Widener University. Dr. Mersky instructs courses in Environmental Engineering and Applied Mechanics on both Graduate and Undergraduate levels. His teaching skills and techniques have been highly rated by his students.

Dr. Mersky has developed various continuing education seminars which focus on recycling and reuse of solid wastes. In addition, he conducts a consulting practice specializing in solid waste disposal. A gifted author, he has published several reports on resource recovery, solid waste, and transportation engineering topics.

Dr. Mersky received his Bachelor, Master, and Doctorate degrees in Civil and Urban Engineering from the University of Pennsylvania. He presently serves on a citizens advisory panel for a proposed trash-to-steam facility to be built in Chester. Dr.

Mersky is also a member of the Advisory Board of the Pennsylvania Resources Council and is an Associate Editor of the Journal of Resource Management and Technology.

### Government Engineer of the Year

**David L. Wismer**, Deputy Commissioner for the Philadelphia Department of Licenses and Inspections was honored as the Government Engineer of the Year. Dave administers six responsibility centers including the Building Division, District Operations, Contractual Services, Commercial and Industrial Fire Inspection, Enforcement and Appeals Boards. Together these units consist of approximately 300 employees responsible for interpreting, applying and enforcing Zoning, Housing, Fire, Plumbing, Electrical and Building Codes in the City of Philadelphia.

Extremely active in the Building Officials and Code Administrators International (BOCA), Mr. Wismer was instrumental in the adoption of the Model Building Code for the City of Philadelphia. He is currently completing his third year as Director of BOCA International. Other Professional Societies in which Mr. Wismer is active include the National Fire Protection Association, the Society of Fire Prevention Engineers, and ASCE's Technical Council on Codes and Standards.

A dedicated and inspiring instructor, Mr. Wismer is an adjunct faculty member at both the Community College of Philadelphia and at Spring Garden College. In addition, he conducts seminars at the Engineers' Club on the application of the National Building Code.

### Young Government Engineer of the Year

The Young Government Engineer of the Year Award was presented to **Robert M. Wright**, Staff Engineer for the Philadelphia Department of Streets. Bob was recognized for his substantial contributions to the Philadelphia Section and the community, and for his dedication and excellence as a Municipal Engineer.

A graduate of the University of Pennsylvania, Bob's responsibilities include supervision and technical review of designs, plans, specifications, contract documents, and cost estimates prepared by consultants and City designers for federally funded highway projects.

Projects under his charge have included: design of new sidewalk, guide rail, and drainage through Pennypack Park; redesign of the Lincoln Drive and Harvey Street intersection to improve channelization; and reconstruction plans for Washington Avenue. In total he has moved over 24 projects representing a combined value of over \$34 million to completion.

As a tireless contributor to the Philadelphia Section, Bob has served as Membership Secretary and Secretary, and is a dedicated member of several committees.

### Geotechnical Engineer of the Year

**Antal Partos**, Chief Soils Engineer and Vice President of Site Engineers was the recipient of the Technical Award for Geotechnical Engineering. Mr. Partos is highly respected and influential in the engineering community and has published fourteen technical papers on numerous soils and foundation topics. An enthusiastic and knowledgeable speaker, he has lectured throughout the world. A true leader, he does not hesitate speaking out on controversial issues and problems.

His many complex foundation designs include the Center City Commuter Connection, One Liberty Place, and the construction of Redwood

Tower — a seventeen story office building built over an existing seven story parking garage in Baltimore. Mr. Partos is an advocate of in-situ monitoring to provide feedback for the Design profession and has participated in foundation and pile testing at Philadelphia International Airport. Mr. Partos is active in several technical and professional societies including the American Society of Foundation Engineers and the New York Academy of Science.

### Construction Engineer of the Year

**Francis J. Depman** was honored as the Construction Engineer of the Year. Frank is Vice President of the Kaufman Construction Company, a contracting firm that specializes in heavy and highway construction. His duties include estimating, project management and various other administrative aspects of major construction undertakings handled by the firm.

Mr. Depman obtained a Bachelor of Science degree in Civil Engineering from the University of Pennsylvania. Frank's experience with Kaufman Construction has involved him in many key projects including the Philadelphia approaches to the Walt Whitman Bridge; the Market Street Subway tunnel beneath the Schuylkill River; the New Jersey approaches to the Betsy Ross Bridge; the Center City Commuter Connection; and the current reconstruction of the Olney Station of the Broad Street Subway.

He is a past member of the Section's Board of Directors and has been elected to the position of Second Vice President for 1988-89. Mr. Depman is also active in the American Society of Highway Engineers and the American Society of Military Engineers, and is a member of the Board of Directors of Nazareth Hospital.

### Transportation Engineer of the Year

**H. Richard Orth** was presented with the Technical Award for Transportation Engineering. Richard Orth has made significant contributions in the planning and design of transportation systems throughout the Delaware Valley.

Key accomplishments have included studies of the Chestnut Street Transitway, the Camden waterfronts and the Schuylkill Expressway Reconstruction Project.

As a member of Tau Beta Pi, the Institute of Transportation Engineers where he was a member of the international board of directors, and at ASCE, he has served his profession. Villanova University's College of Engineering, where he earned both Bachelor's and Master's degrees, honored Richard Orth as the first recipient of the John J. Gallen Award in 1977.

As a leader, Mr. Orth serves as president of Orth-Rodgers-Thompson and Associates, the firm he helped found in 1977. He has served as an instructor at both Drexel and Temple Universities.

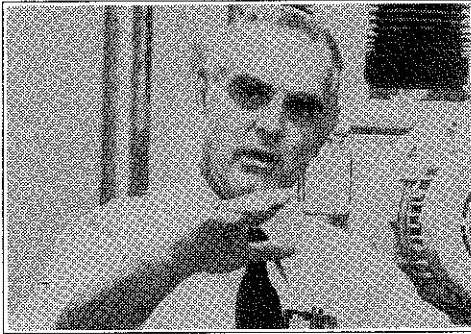
### Special Awards

Two very special ladies were honored with Certificates of Appreciation for their devoted service to the Philadelphia Section: **Ms. Paula Pasternak**, Secretary to President Norman G. Weintraub, for her splendid efforts in assisting the Section in the myriad logistic details of monthly meeting arrangements, dinner reservations, tickets distribution for the Annual Dinner Dance on May 14, 1987, and as an invaluable aide to Mr. Weintraub in completing his chores as President of the Section.

(Continued on Page 5)

## ROBERT J. STONE

By Sidney Robin, Editor of THE NEWS



With deep sadness, the Philadelphia Section, ASCE, reports the death, on April 3, 1988, of Dr. Robert J. Stone. One of the Section's most distinguished and dedicated members, he was 57 years old. Dr. Stone - affectionately known as "Jim" to all his friends and colleagues - was Chairman since 1978 of the Civil Engineering Department at Temple University, Philadelphia. He became a faculty member at that University in 1974 as Professor of Civil Engineering, specializing in structural design analyses and construction-related subjects and projects. He earned a B.S. in Mathematics, College of William and Mary (1952); B.S. in Civil Engineering, Swarthmore College (1956); M.S. in Engineering, University of Michigan (1957); and Ph.D., Oklahoma State University (1972).

Before embarking on an academic career Dr. Stone served as a 1st Lieutenant, Field Artillery, Reconnaissance and Surveying Officer, United States Army, and saw action in Korea; and he was employed in various engineering design capacities by private and public agencies, consulting firms, general contractors, and his own research projects.

After two years as Instructor and Assistant Professor of Civil Engineering at Swarthmore College and the University of Denver, he joined the faculty of Drexel University, where he served as Assistant Professor of Civil Engineering from 1959 to 1974 (except for a two-year sabbatical as a National Science Faculty Fellow and Teaching Assistant at Oklahoma State University). Dr. Stone is the author or co-author of numerous publications and papers on a wide range of technical subjects, including: Continuing Education for Construction Contractors; Modeling of Highway Maintenance Operations; Surveying Laboratory Manuals; Concrete Formwork, Mixing and Handling; and many others.

Among the honors bestowed on Dr. Stone are: Dean's List, College of William and Mary (1951-1952); Chi Epsilon, Oklahoma State University (1967); Tau Beta Pi, Drexel University (1969); Outstanding Teacher Award of the Alumni Association of the College of Engineering Technology, Temple University (1979); Engineer of the Year Award, 1979, Delaware County Chapter, PSPE; and the Christian R and Mary F Lindback Foundation Award for Distinguished Teaching, Temple University, (1982).

Besides a full roster of teaching, Jim Stone participated in a myriad of special faculty councils; Degree Review, Tenure and Promotion

Awards, Merit Pay, College Reorganization and many other Committees while serving at Temple and Drexel. In 1978-79 he was the Editor of the Newsletter for the Middle Atlantic Section, American Society for Engineering Education (ASEE).

Dr. Stone was extremely active in ASCE at both the National and Philadelphia Section levels. He was a member of National ASCE Committee for Construction Research; National Cost Committee, Construction Division. In the Philadelphia Section he served as Chairman of the Construction Technical Group (1975-76), the Community Relations Committee, Judge for the Annual Concrete Canoe Race, and Section Director (1985-87). At the time he was stricken, Jim was Acting Chairman of the Section's Student Chapter Committee, and had started to coordinate plans for the Annual Pennsylvania-Delaware Regional ASCE Student Chapter Conference and Paper Competition. The 1988 Conference was cancelled in tribute to Dr. Stone's memory. Since 1977, he was Faculty Advisor for the ASCE Student Chapter at Temple, where the Conference was hosted in 1987.

In addition to ASCE and ASEE, Dr. Stone was an active member of many professional organizations, including NSPE and PSPE, the Highway Research Board, the American Council for Construction Education, and the Society for Experimental Stress Analysis (President, Delaware Valley Section, 1963). Jim's community activities included church Vestryman, Lay Reader and School Superintendent (1972-77); Advisory Boards of private schools and Delaware County Community College; High School athletic programs official; Boy Scouts, Masonic Lodge; and the Philadelphia Chapter, Sons of the American Revolution. He was a Registered Professional Engineer in Pennsylvania, a Professional Consultant to Legal Council, and a Certified Instructor by the U.S. Department of Labor to teach Construction Safety and Health.

To Jim Stone's wife, Ellen; sons Robert J., Jr., and John W.; daughter, Barbara; and their families, the Philadelphia Section, ASCE extends its heartfelt condolences. They may find comfort in the assurance that those of us who knew and worked with him, particularly the hundreds of his devoted students and including this writer, who was closely associated with him in the Student Chapter activities and Annual Conference, as well as many other Section functions - will never forget his warmth, geniality, generosity of time and effort to assist in innumerable assignments, and affability in every aspect of his full and productive professional, social and communal life. To all of us his radiant personality and spirit will live forever, as we know that are etched in the treasured memories of his beloved family.

### 1988 Awards

(Continued from Page 4)

Betty (Mrs. Sid) Robin as Special Assistant to the Editor for these many years, as proof-reader, critic and provider of suggestions.

The Awards Committee is commended for the

## 1988 SEMINAR ON LEGAL RESPONSIBILITIES OF ARCHITECTS AND ENGINEERS

Date: **Friday, November 11, 1988**  
Widener University School of Law,  
Concord Pike, Wilmington, DE

**SPONSORS:** Philadelphia Section, ASCE and Widener University School of Law  
Registration: 8:30 - 9:30 a.m. (Rolls and coffee will be served).

Seminar Highlights: 9:30 - 9:45 a.m.

Welcome and Introductions: **Anthony J. Santoro**, Dean, Widener University School of Law.

Moderators: **Howard M. Berg, Esquire** - Berg, Bifferator, Tighe, and Cottrell, P.A., Wilmington, DE; Philadelphia, PA; Baltimore, MD; Adjunct Professor, Widener University School of Law.

**Fredric L. Plotnick, Esquire, P.E.** - Engineering and Property Management Consultants, Inc., Philadelphia, PA

Principal specialty subjects to be discussed by eminent speakers include: Trends in Litigation; Insurance, Underwriting and Claims Handling; Contracting, Quality management and Peer Review as Risk Management Tools; Construction Contract Analysis; and Delay Damage Claims.

Refreshments and Luncheon are included in the Registration Fee of \$125.00

For full particulars and registration procedures, contact **Elsie Klein**, Widener University School of Law, Concord Pike Box 7474, Wilmington, DE 19803, phone (302) 478-3000 or (215) 459-9209.

### MEMBERS IN THE NEWS

#### Tantala Selected Trustee

Albert M. Tantala, P.E., Phila. Section, ASCE Past President (1986-87) has been selected to serve as a Trustee of The Foundation for Independent Colleges, Inc. of PA, for a three year term commencing in the Spring of 1988.

The 53 member colleges of FIC are four-year degree-granting institutions which are accredited by the Middle States Association of Colleges.

The purpose of FIC is to provide, through a united annual appeal, an efficient and effective channel by which business and industry colleges and universities of Pennsylvania which need these operating funds to preserve educational quality.

Mr. Tantala is also a member of the Board of Trustees of Holy Family College in northeast Philadelphia. He is President of Tantala Associates, Civil and Consulting Engineers, with offices in Philadelphia, PA and Margate, NJ.

professional and inspiring awards ceremony enjoyed by all who attended the Spring Social. Many long hours of hardwork by Committee Members **Norman Weintraub, John Durrant, Robert Wright, and Joanna McErlean** resulted in an unqualifiedly successful ceremony.

## ASCE DUES BILL AND TECHNICAL GROUP DETAILS

Section members will notice in the 1988 dues bill from National ASCE Headquarters, that the PHILADELPHIA (SECTION) DUES is itemized as \$13.00. This amount includes assessment for membership in one Phila. Section Technical Group of your choice. *If you choose to be a member of more than one group, please add \$1.00 for each group.*

Also, because National's bill did not list the Technical groups to which your \$1.00 payments were to be applied, *you are requested to get in touch with the Chairman of the Technical Groups of your preference*, so that their membership lists can be classified.

The appropriate individuals to contact are the following:

### Liaison

*Francis J. Depman (Frank)*  
Kaufman Construction Co.  
4000 Pulaski Ave.  
Philadelphia, PA 19140  
(215) 885-3576

### Younger Member Forum

Chairman position available. If interested, please contact Frank Depman (See "Liaison" above).

### Construction

*Fredric L. Plotnick, Chairman*  
Engineering & Property Mgt. Consultants, Inc.  
806 Hilton Lane  
Elkins Park, PA 19117  
(215) 843-7313 or (215) 487-1443

### Engineering Management

*Edward F. Koehler, Chairman*  
Amtrak - Engineering  
(215) 557-1603

### Geotechnical

*Dr. Joseph P. Martin, Chairman*  
Drexel University  
Civil Engineering Dept.  
32nd & Chestnut Sts.  
Philadelphia, PA 19104  
(215) 895-2363

### Structural

*David A. VanOcker, Chairman*  
A&R Engineering Co., Inc.  
Lewis Tower Bldg., Ste. 606  
Philadelphia, PA 19102  
(215) 735-9755

### Transportation & Urban Development

*William T. Thomsen, Chairman*  
Urban Engineers, Inc.  
300 N. 3rd St.  
Philadelphia, PA 19406  
(215) 922-8080

### Water & Environmental Engineering

*Dave Ritter, Chairman*  
PSC Environmental  
649 N. Lewis Rd.  
Limerick, PA 19468  
(215) 495-0303

## 1989 DANIEL W. MEAD CONTEST FOR YOUNGER MEMBERS

The Daniel W. Mead Prize for Younger Members was established in 1939 to honor the memory and accomplishments of the 67th President of American Society of Civil Engineers. The talents of many of the leaders of the profession were first recognized in previous contests for this significant professional honor. The current contest provides another opportunity for alert young civil engineers to further their professional development and gain national attention.

### TOPIC

- Papers must be written on "Does Ethical Engineering Practice Affect Creativity?"
- Do engineering standards and guidelines such as ASCE's *Manual of Professional Practice for Quality in the Constructed Project* limit creativity?
- Does creativity in design and construction affect liability potential?
- Will greater definition of responsibilities help to prevent failures and improve overall quality?

### RULES

- Authors must be Associate Members or Members of the Society 32 years of age or less on February 1, in the year of the award.
  - Only one person can write each paper.
  - Each Section can submit only one paper.
  - Paper must contain no more than 2,000 words.
  - One winner will be selected from each of the Society's four zones.
  - The national winner, selected from the zonal winners, will receive a wall plaque and a certificate.
  - Winners may be invited to present their papers at the ASCE Annual Convention, New Orleans, October, 1989.
  - The paper by the national winner will be submitted for publication in CIVIL ENGINEERING or Journal of Professional Issues in Engineering.
  - By February 1, 1989, seven copies of each paper must be submitted through the Section Secretary, *Robert M. Wright*, (See page 2) to AMERICAN SOCIETY OF CIVIL ENGINEERS/United Engineering Center, 345 East 47th Street, New York, NY 10017-2398.
- Philadelphia Section Younger Members are urged to get to work on the Mead Competition. We are proud of our past winners and want to continue to be in the forefront.
- Past Mead Competition winners from the Philadelphia Section are:
- 1974 - *John Spitzko*, National Award
  - 1977 - *Joseph R. Syrrnick*, Zone I Award
  - 1978 - *David S. Shaw*, Zone I Award
  - 1979 - *Haym Benaroya*, Zone I Award
  - 1983 - *Greg Neiderer*, Zone III Award

## The Art of Structural Engineering??

Structural Engineering is the art of molding materials we do not wholly understand into shapes we cannot precisely analyze, so as to withstand forces we cannot really assess. In such a way that the community-at-large has no reason to suspect the extent of our ignorance. (Anon.)

## SECTION CO-SPONSORS SOLID WASTE CONFERENCE

The *Fourth International Conference on Urban Solid Waste Management and Secondary Materials* will convene at the University of Pennsylvania, Philadelphia, **December 6 (evening) - December 9, 1988.** The Philadelphia Section, ASCE, is a co-sponsor for the Conference. Sponsors to date include: The Journal of Resource Management and Technology; University of Pennsylvania Department of Systems; Widener University Department of Civil Engineering; City of Philadelphia, Office of Recycling; State of Delaware, Delaware Solid Waste Authority; and State of New Jersey, Department of Environmental Protection. In addition to ASCE, other co-sponsors to date are: U.S. Environmental Protection Agency, Region 3; The University of Delaware Department of Civil Engineering; Rutgers, The State University of New Jersey, Center for Plastics Recycling Research; and the Council of State Governments.

The purpose of this Conference is to bring together experts from academia, government, and business, to explore solid waste management and recycling/recovery of secondary materials. Topics will include Solid Waste Management Models; Research and Education; Finance/Economic Development; Markets; and Technology. Presentations on new, innovative programs are expected. Co-sponsors are encouraged to send delegates to the Conference and to publicize it. They may review papers for publication in the Journal of Resource Management and Technology; as well as possibly moderating, organizing or chairing sessions.

The First Conference in this series was held under the title "First Symposium on Industrial Resource Management" in Philadelphia in 1981, to bring together experts from government, business and academia to examine issues related to various fields of solid wastes/resources management and technology. The Second Conference was held in Philadelphia in 1983 and the Third in New York in 1987.

For full information, please contact **Ronald L. Mersky**, Program Chairman, Assistant Professor of Civil Engineering, Widener University; and Associate Editor, The Journal of Resource Management and Technology, Chester, PA 19013, (215) 499-4193 or (215) 499-4041.

## April Joint Meeting

(Continued from Page 3)

draft phases with the drafts circulated among ASCE sections, owner groups, professional associations, manufacturers, insurance companies, and lawyers.

The Manual provides guidelines and recommendations for owners, designers and constructors; besides the construction team, benefactors will be suppliers, subcontractors, government officials and legislatures.

Mr. Poirot reported that even in its current form the Manual is being used extensively. *Engineering New Record* supports the Manual, while ASCE is working with the American Institute of Architects to solve differences and jointly prepare a future chapter. The Trial Use and Comment edition will be available in May 1988 at a cost of \$18. The final edition is expected to be published in late 1989 or early 1990.