

# the news



FIRST CLASS MAIL

Presorted  
1st Class Mail  
U.S. Postage Paid  
Philadelphia, PA  
Permit No. 1845

PHILADELPHIA SECTION  
AMERICAN SOCIETY OF CIVIL ENGINEERS  
1317 Spruce Street, Philadelphia, PA 19107

Vol. 61-2

Celebrating Our  75th Anniversary

NOVEMBER, 1988

## NOVEMBER DINNER MEETING

Philadelphia Section, American Society of Civil Engineers

### THURSDAY, NOVEMBER 10, 1988

LOCATION: DREXEL UNIVERSITY, GRAND HALL, CREESE STUDENT CENTER  
SouthWest Corner of 32nd and Chestnut Streets, Philadelphia, PA  
Beer - 5:30 P.M. Dinner - 6:30 P.M. Meeting - 7:30 P.M.

**NOTE CHANGE IN DATE AND LOCATION OF THIS MEETING**  
From previously announced in THE NEWS October 1988..



**SUBJECT: DESIGN, LOGISTICS AND CONSTRUCTION OF THE PHILADELPHIA FLOWER SHOW**

**SPEAKER: EDWARD L. LINDEMANN**, Staff Horticulturist/Flower Show Designer, The Pennsylvania Horticultural Society

A Philadelphia tradition, the Philadelphia Flower Show draws an audience of over 230,000 each spring. Visitors come from across the nation and abroad to attend this event booked as the largest indoor horticultural exhibition in the world. It takes nearly three years of planning, over a thousand volunteers and a budget of nearly \$2 million dollars to produce this extravaganza.

The show covers over six acres inside the Philadelphia Civic Center. Exhibitors have approximately five days to execute their plans. While architectural features appear real they are carefully created fakes that produce an illusion. Through the use of lectures, slides and soundtrack, **COUNT DOWN TO SPRING** presents the planning, logistics, orchestration, laughter and tears that it takes to produce and construct the Philadelphia Flower Show.

As designer of the world's largest indoor flower show, **Ed Lindemann** is responsible for arranging a six acre floor plan for over 100 major exhibits and designing the aesthetic features of the show. In addition, he supervises the planning and maintenance of the 18th Century garden and greenhouse at the Society and answers horticultural questions that come into the PHS offices.

(Continued on Page 2)

## DECEMBER DINNER MEETING

Philadelphia Section, American Society of Civil Engineers

### TUESDAY, DECEMBER 13, 1988

ENGINEERS' CLUB, 1317 Spruce St., Philadelphia  
Cocktails - 5:30 P.M. Dinner - 6:30 P.M. Meeting - 7:30 P.M.

**SUBJECT: THE CAMDEN AQUARIUM**

**SPEAKER: JOHN THOMAS SHANNON, JR.**, Project Manager, Cooper's Ferry Development Association, Inc.

Mr. Shannon will describe the oversight, management and implementation of the exciting new Camden Aquarium, a major component of the proposed \$400 million program for the redevelopment of the downtown waterfront area of Camden, NJ.

**SPECIAL FEATURE: COLLEGE NIGHT** (Name of School to be announced).

FOR RESERVATION FOR ALL PHILADELPHIA SECTION REGULAR MONTHLY MEETINGS - UNLESS OTHERWISE NOTED - PLEASE CALL PRESIDENT SUE LIOR'S SECRETARY, BETHANN, AT (215) 925-3196.

Dinner Meal Charge: ASCE Member \$16.00; Non-Member - \$17.00; Students - \$8.00

STUDENTS: If you prefer, you are invited and welcome to attend the Meeting after Dinner, at no charge.

## TECHNICAL GROUP ACTIVITIES

**Geotechnical and Water/Environmental Group**  
(Combined Program for 1988-1989)

**November Meeting**

**Date: Tuesday, November 15, 1988 - 7:00 PM**  
Creese Student Center, Drexel University,  
(Lounge beside the Mandel Theater)  
Chestnut St. between 32nd & 33rd Sts.

**Subject: Groundwater Monitoring Well Placement Design and Data Management**

**Speaker: Richard N. Sands**, Vice President, Integrated Data Technologies, Philadelphia, PA

Arrangements for members to have dinner before the meeting, if desired, are being made, and details will be given with the two Technical Group mailings. For further information, please call Chairman **Dave Ritter**, at (215) 495-0303; or **Dr. Joseph P. Martin**, at (215) 895-2363.

This presentation will discuss the planning and expansion of monitoring well arrays around waste disposal or spill sites, and organized analysis of the data obtained from monitoring groundwater levels and water quality.

The focus of the discussion is the use of computers to address these issues and thus make the best use of the resources and effort expended in a groundwater monitoring program.

## Transportation & Urban Development Group

**November Meeting**

**Date: Thursday, November 17, 1988**

Engineers' Club

Cocktails - 5:30 PM; Dinner - 6:00 PM;

Meeting - 7:00 PM

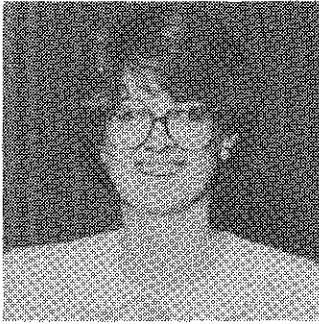
**Subject: The History of the Development of Philadelphia International Airport - Past to Present**

**Speaker: Robert A. Dick**, Vice President - Airports Division, Urban Engineers, Inc.

Mr. Dick is currently managing the engineering improvements associated with Terminal "A." Mr. Dick has been involved with much of the engineering elements associated with Philadelphia Airport Expansion Program over the last 20 years.

For reservations and information, please contact **William T. Thomsen**, Chairman Transportation & Urban Development Group, c/o Urban Engineers, Inc., 300 N. 3rd St., Phila., PA 19106; (215) 922-8080

## THE PRESIDENTS MESSAGE



Last month I introduced some of our plans to mark the 75th Year Anniversary. Since then, **Tim Haahs** (Walker Consultants, 751-9555), with Committee members **Bill Thomsen**, **Rich Weggel**, **Dave Van Ocker**, and myself met to discuss the big Spring Picnic and competition. Over the next couple of months we will be requesting corporation, schools, and friends to organize teams to participate in a variety of competitions – some serious, but all fun. This will give each group sufficient time to organize, order T-shirts, practice, etc. We will also have activities for those not competing and children. As you can imagine, Tim needs Committee members to assist in the planning, scheduling, etc. As always, we welcome everyone with a desire to participate and encourage you to call him.

Recently, I returned from the District 4 Council meeting, held at the Campus of the University of Pittsburgh. Several issues were discussed:

First of all, the invoicing of Life Members does not automatically show that dues are not required. These members will receive an invoice for full dues. This invoice must be marked "WAIVED" and returned. Our field representative encourages Life Members who can afford to pay or would like to make a contribution to feel free to do so.

One of the hottest topics at National level is the question of mandatory Section dues. There is a move underfoot by many Sections to require members, as a condition to Society membership, to pay their Section dues. The group that has spearheaded this movement has some compelling arguments. The most obvious, of course, is financial. The way the invoicing procedure is timed (which, by the way, cannot be changed), the Section does not know until well into its program and budget who has paid and who has not. Meantime, both types of members have received all newsletters and may have attended Section and Technical Group meetings. A second compelling reason is one of principle. ASCE is very much a grass roots organization. The Local Sections represent all members within their environs regardless of Local dues having been paid or not. We have many Committees that are active at the Local level, which benefit all members. Our Legislative Affairs Committee continuously monitors Local and State pending legislation and code changes on behalf of its engineers. Most recently in Pennsylvania, this Committee was able to intercede with changes to 25PACode Chapter 102 of the Environmental Quality Board Erosion and Sediment Pollution Control Plan, which would have allowed any "experienced person" to prepare erosion control plans. ASCE requested a wording change to assure that the control plans are prepared by a "design professional" or "Registered Design Professional." These suggestions will be included in the revised wording of the Act. And so it goes with other Committees and activities at the Local level. Last year, only 56% of the Assigned Members of the Philadelphia Section paid to the Section. Needless to say, this is a very poor showing. In spite of this, we were able to send out eight newsletters, conduct seventeen meetings, and have over twelve active Committees. The Section's opinion on this question – we would prefer encouraging those of you who are reading this article to volunteer to pay the Section dues and avoid putting us in the position that it must be mandatory. In our case, the dues are \$12 per year (i.e.: \$1 per month).

Sincerely,

Susan K. Lior, President; Philadelphia Section, ASCE

## NOVEMBER DINNER MEETING

(Continued from Page 1)

Mr. Lindemann joined the Society as Staff Horticulturist in 1972 and became Flower Show Designer in 1980. He previously worked as a landscape designer.

Mr. Lindemann lectures on various horticultural topics and writes regularly for GREEN SCENE magazine, published by the Society.

A noted graphic designer, Mr. Lindemann has designed many brochures, programs and flyers and is the illustrator of Indoor Gardening in the Classroom, a teaching guide for upper elementary and middle school students.

The versatile designer received a Bachelor of Science degree in Ornamental Horticulture from Delaware Valley College of Science and Agriculture.

Mr. Lindemann is a member of The Garden Writers Association of America and the American Association of Botanic Gardens and Arboreta.

### SPECIAL FEATURE: VILLANOVA UNIVERSITY NIGHT

The ASCE Student Chapter, Faculty and Alumni of the Civil Engineering Department of Villanova University will be honored at this meeting. All students, faculty and alumni are cordially invited to attend.

## SENIOR PROJECT MANAGERS

**Kleinfelder**, an ENR top 100 firm, has immediate openings for either Geotechnical or Environmental Project Managers. These key positions require an MS, a PE, 5-15 years in consulting and excellent communication skills. Opportunities in Seattle, Las Vegas, Sacramento, Fresno, San Diego, Los Angeles and Walnut Creek. We offer competitive pay/benefits, growth potential and profit sharing. We also provide spouse job hunting assistance. Resumes to **Kleinfelder, 2121 N. Calif. Blvd., #570, Walnut Creek, CA 94596, Attn: Stuart Pike, E.O.E.**

### PHILADELPHIA SECTION AMERICAN SOCIETY OF CIVIL ENGINEERS

#### OFFICERS 1988-1989

#### PRESIDENT

Susan K. Lior

#### VICE PRESIDENTS

J. Richard Weggel (President-Elect)

Francis J. Depman

#### SECRETARY

Robert M. Wright

#### TREASURER

Thomas J. Branigan

#### MEMBERSHIP SECRETARY

Joanne M. Anovick

#### DIRECTORS

Michael J. Gabor	Timothy H. Haahs
Moustafa A. Gouda	William T. Thomsen
Edward M. Wallo	Alvin Zion
Kin Chung (Reading Branch)	
<b>PAST PRESIDENTS</b>	
Ira N. Pierce	Albert M. Tantala
Norman G. Weintraub	

President - Susan K. Lior

PSI/Weston

1818 Chestnut Street

Suite 1004

Philadelphia, PA 19107

(215) 925-3196

Secretary - Robert M. Wright

City of Philadelphia

Department of Streets

920 Municipal Services Building

Philadelphia, PA 19102

(215) 686-5538

#### PUBLICATIONS COMMITTEE

Sidney Robin

Chairman and Editor of THE NEWS

Joseph R. Synchron

David J. Perri

Associate Editors

Publications Coordinator

Albert M. Tantala

#### SEND COPY TO:

Sidney Robin

64 Nancy Drive

Richboro, PA 18954

(215) 322-7464

**IMPORTANT: DINNER RESERVATIONS FOR SECTION MEETINGS ARE ESSENTIAL. PLEASE PHONE IN YOUR RESERVATION AS DIRECTED AT BOTTOM OF PAGE ONE.**

**COPY DEADLINE  
FOR  
DECEMBER 1988  
ISSUE  
NOVEMBER 9, 1988**

## OCTOBER MEETING

October 11, 1988

Engineers' Club

SECTION CO-SPONSORS  
SOLID WASTE CONFERENCE

## THE FRANKFORD "EL" REHABILITATION

(By Sid Robin, Editor and Dave Perri, Associate Editor)

A gratifying turnout of Philadelphia Section, ASCE members and guests, and students attended the inaugural regular monthly Section meeting of the 1988-1989 season. It was the kickoff of our 75th Year Anniversary, and the Section has established a special Committee to plan celebration events.

The subject of the meeting was "Reconstruction of the Frankford Elevated." Principal speaker was **James W. Palmer, P.E.**, Director, Frankford Elevated Reconstruction Project, Southeastern Pennsylvania Transportation Authority (SEPTA). Section President **Susan K. Lior**, presided expertly at the first formal session of her tenure. (There had been several informal Board of Directors and Committee meetings during the late spring and summer months).

**Spring Garden College Night**

The meeting honored the ASCE Student Club, Faculty and Alumni of the Civil Engineering Department of Spring Garden College, whose members attended the meeting in force.

**Walter E. Greene**, newly appointed Faculty Advisor of the Student Club, summarized the Civil Engineering program at Spring Garden. While majoring in construction and structural design, courses are presently conducted or are planned in environmental, water, geotechnical and other major branches.

**President Smith Reviews Student Club**

ASCE Student Club President **Tom Smith** thanked the Philadelphia Section for its courtesies, and introduced his fellow officers: Vice President - **Matt Stover**; Treasurer - **Mario Tarlo**; and Secretary - **John Ehling**. Because the Civil Engineering enrollment at Spring Garden is relatively small, the Student Club has affiliated with, and is under the sponsorship of, the General Building Contractor's Association ((GBCA), with principal emphasis on construction studies. The GBCA Student Representative President is **Margaret Monaghan**; and Vice President is **Liz Ann Vaughan**.

Tom Smith described the Club's activities, which highlighted field trips and lectures on major projects, in which slip-form concrete construction and other modern methods and techniques are being developed. The Club participates in the Annual ACI Concrete Beam Competition, the Annual Concrete Canoe Races on the Schuylkill (in which it has enjoyed consistent winning entries); and several technical, athletic and social events planned for this formidable year of activities.

**New Construction Versus Reconstruction**

One of the most significant aspects of the "El" Reconstruction Project is that the reconstruction has to take place while maintaining the system's 112,000 person daily ridership. To complete this objective, all construction must be accomplished on weekends between 9PM on Friday and 1AM on Monday.

Mr. Palmer explained that key to the rebuilding of rail infrastructure is maintaining a "delicate balance between servicing the ridership, developing biddable construction packages, and the con-

struction timetable." The three major issues that differentiate between new construction and infrastructure rehabilitation are: "the interim configuration, the constructibility of the design, and the 'Box.'" The 'Box' was defined by Mr. Palmer as the "contract documents that clearly define the limitations within which the contractor has to work." For example, in this project, limitations include: restricting access to the structure to weekends; requiring that the interim configurations provide safe access to SEPTA operation and maintenance personnel; and re-establishment of service by 5AM on Monday mornings. The more clearly these limitations can be defined for the contractor, the less expensive the project can become.

**Structural Elements**

Mr. Palmer discussed the original construction sequence of the Elevated, detailed the various structural elements, and explained the reconstruction process. The project is budgeted at \$650 million with an eight year timetable. Mr. Palmer presented slides of a completed section of the Elevated south of the Berks St. station. Most impressive about this finished segment is the marriage between an efficient engineering design and an aesthetically pleasing structure. Included in the reconstruction is a precast enclosed walkway beam that will help to minimize noise.

**Discussion Period**

Interesting comments and questions from the floor provided additional impetus to this very insightful discussion. Mr. Palmer responded with clarity and forthrightness. The meeting concluded with President Susan Lior presenting Mr. Palmer with the Section's Certificate of Appreciation.

The kickoff of the Philadelphia Section's 1988-1989 season boasts not only the celebration of its diamond jubilee - it also marks the first time in its history that a woman is President. Does this herald the evolution, in the future, of National political realities for America?

**MEMBERS IN THE NEWS****VanOcker Joins Consulting Firm**

**David A. VanOcker**, Chairman of the Philadelphia Section's Structural Technical Group, has become an Associate of the Consulting Firm of **Christakis & Kachele, Inc.**, a relative newcomer to the area, specializing in Structural Engineering Services. In its second year of establishment at 6910 Ludlow St., Upper Darby, PA 19082, phone (215) 352-7676, staffed by a corps of dynamic business and engineering professionals, the firm continues to experience growth and success in providing quality services to the Architectural/Engineering and Development Community of the Delaware Valley and beyond.

Prior to joining **Christakis & Kachele, Inc.**, Dave served seven years as Project Engineer and Manager under Philadelphia Section Past President **Frank Rennis**, Principal of **A&R Engineering Company**. The Philadelphia Section extends best wishes to Dave for success in his new position.

The *Fourth International Conference on Urban Solid Waste Management and Secondary Materials* will convene at the University of Pennsylvania, Philadelphia, **December 6** (evening) - **December 9, 1988**. The Philadelphia Section, ASCE, is a co-sponsor for the Conference. Sponsors to date include: The Journal of Resource Management and Technology; University of Pennsylvania Department of Systems; Widener University Department of Civil Engineering; City of Philadelphia, Office of Recycling; State of Delaware, Delaware Solid Waste Authority; and State of New Jersey, Department of Environmental Protection. In addition to ASCE, other co-sponsors to date are: U.S. Environmental Protection Agency, Region 3; The University of Delaware Department of Civil Engineering; Rutgers, The State University of New Jersey, Center for Plastics Recycling Research; and the Council of State Governments.

The purpose of this Conference is to bring together experts from academia, government, and business, to explore solid waste management and recycling/recovery of secondary materials. Topics will include Solid Waste Management Models; Research and Education; Finance/Economic Development; Markets; and Technology. Presentations on new, innovative programs are expected. Co-sponsors are encouraged to send delegates to the Conference and to publicize it. They may review papers for publication in the Journal of Resource Management and Technology; as well as possibly moderating, organizing or chairing sessions.

The First Conference in this series was held under the title "First Symposium on Industrial Resource Management" in Philadelphia in 1981, to bring together experts from government, business and academia to examine issues related to various fields of solid wastes/resources management and technology. The Second Conference was held in Philadelphia in 1983 and the Third in New York in 1987.

For full information, please contact **Ronald L. Mersky**, Program Chairman, Assistant Professor of Civil Engineering, Widener University; and Associate Editor, The Journal of Resource Management and Technology, Chester, PA 19013, (215) 499-4193 or (215) 499-4041.

**Kinbar Appointed to UMTA Post**

The Urban Mass Transportation Administration (UMTA), U.S. Department of Transportation, announces the appointment of **Sheldon A. ("Shelly") Kinbar** as Regional Manager for the agency's Region III office, which serves nine states from its Philadelphia Headquarters at 841 Chestnut St., Phila., PA

Shelly, a Philadelphia Section, ASCE member since 1975, was cited by UMTA Administrator **Alfred A. DelliBovi** as having "... 13 years of exemplary service to UMTA; an excellent manager who understands the mass transportation needs of his Region and the Federal Government's role in meeting those needs. . . ." As Regional Manager, Kinbar will be responsible for administering UMTA's program of planning,

(Continued on Page 4)

## ASCE DUES BILL AND TECHNICAL GROUP DETAILS

Section members will notice in the 1988 dues bill from National ASCE Headquarters, that the PHILADELPHIA (SECTION) DUES is itemized as \$13.00. This amount includes assessment for membership in one Phila. Section Technical Group of your choice. *If you choose to be a member of more than one group, please add \$1.00 for each group.*

Also, because National's bill did not list the Technical groups to which your \$1.00 payments were to be applied, *you are requested to get in touch with the Chairman of the Technical Groups of your preference*, so that their membership lists can be classified.

The appropriate individuals to contact are the following:

### Liaison

Francis J. Depman (Frank)  
Kaufman Construction Co.  
4000 Pulaski Ave.  
Philadelphia, PA 19140  
(215) 885-3576

### Younger Member Forum

Chairman position available. If interested, please contact Frank Depman (See "Liaison" above).

### Construction

Fredric L. Plotnick, Chairman  
Engineering & Property Mgt. Consultants  
806 Hilton Lane  
Elkins Park, PA 19117  
(215) 843-7313 or (215) 487-1443

### Engineering Management

Edward F. Koehler, Chairman  
Amtrak - Engineering  
(215) 557-1603

### Geotechnical

Dr. Joseph P. Martin, Chairman  
Drexel University  
Civil Engineering Dept.  
32nd & Chestnut Sts.  
Philadelphia, PA 19104  
(215) 895-2363

### Structural

David A. VanOcker, Chairman  
Christakis & Kaechele, Inc.  
6910 Ludlow Street  
Philadelphia, PA 19082  
(215) 352-7676

### Transportation & Urban Development

William T. Thomsen, Chairman  
Urban Engineers, Inc.  
300 N. 3rd St.  
Philadelphia, PA 19406  
(215) 922-8080

### Water & Environmental Engineering

Dave Ritter, Chairman  
PSC Environmental  
649 N. Lewis Rd.  
Limerick, PA 19468  
(215) 495-0303

## 1989 DANIEL W. MEAD CONTEST FOR YOUNGER MEMBERS

The Daniel W. Mead Prize for Younger Members was established in 1939 to honor the memory and accomplishments of the 67th President of American Society of Civil Engineers. The talents of many of the leaders of the profession were first recognized in previous contests for this significant professional honor. The current contest provides another opportunity for alert young civil engineers to further their professional development and gain national attention.

### TOPIC

- Papers must be written on "Does Ethical Engineering Practice Affect Creativity?"
- Do engineering standards and guidelines such as ASCE's *Manual of Professional Practice for Quality in the Constructed Project* limit creativity?
- Does creativity in design and construction affect liability potential?
- Will greater definition of responsibilities help to prevent failures and improve overall quality?

### RULES

- Authors must be Associate Members or Members of the Society 32 years of age or less on February 1, in the year of the award.
  - Only one person can write each paper.
  - Each Section can submit only one paper.
  - Paper must contain no more than 2,000 words.
  - One winner will be selected from each of the Society's four zones.
  - The national winner, selected from the zonal winners, will receive a wall plaque and a certificate.
  - Winners may be invited to present their papers at the ASCE Annual Convention, New Orleans, October, 1989.
  - The paper by the national winner will be submitted for publication in CIVIL ENGINEERING or Journal of Professional Issues in Engineering.
  - By February 1, 1989, seven copies of each paper must be submitted through the Section Secretary, Robert M. Wright, (See page 2) to AMERICAN SOCIETY OF CIVIL ENGINEERS/United Engineering Center, 345 East 47th Street, New York, NY 10017-2398.
- Philadelphia Section Younger Members are urged to get to work on the Mead Competition. We are proud of our past winners and want to continue to be in the forefront.
- Past Mead Competition winners from the Philadelphia Section are:
- 1974 - John Spitko, National Award
  - 1977 - Joseph R. Syrnick, Zone I Award
  - 1978 - David S. Shaw, Zone I Award
  - 1979 - Haym Bamaroya, Zone I Award
  - 1983 - Greg Neiderer, Zone III Award

## 1988 SEMINAR ON LEGAL RESPONSIBILITIES OF ARCHITECTS AND ENGINEERS

Date: Friday, November 11, 1988  
Widener University School of Law,  
Concord Pike, Wilmington, DE

SPONSORS: Philadelphia Section, ASCE and Widener University School of Law  
Registration: 8:30 - 9:30 a.m. (Rolls and coffee will be served).

Seminar Highlights: 9:30 - 9:45 a.m.

Welcome and Introductions: Anthony J. Santoro, Dean, Widener University School of Law.

Moderators: Howard M. Berg, Esquire - Berg, Bifferator, Tighe, and Cottrell, P.A., Wilmington, DE; Philadelphia, PA; Baltimore, MD; Adjunct Professor, Widener University School of Law.

Fredric L. Plotnick, Esquire, P.E. - Engineering and Property Management Consultants, Inc., Philadelphia, PA

Principal specialty subjects to be discussed by eminent speakers include: Trends in Litigation; Insurance, Underwriting and Claims Handling; Contracting, Quality management and Peer Review as Risk Management Tools; Construction Contract Analysis; and Delay Damage Claims.

Refreshments and Luncheon are included in the Registration Fee of \$125.00

For full particulars and registration procedures, contact Elsie Klein, Widener University School of Law, Concord Pike Box 7474, Wilmington, DE 19803, phone (302) 478-3000 or (215) 459-9209.

## MEMBERS IN THE NEWS

(Continued from Page 3)

operation and administering capital grants to improve mass transit service in the region. The nine states of Region III are: Pennsylvania, Delaware, Maryland, West Virginia, Virginia, Kentucky, Tennessee, North Carolina and South Carolina. Mr. Kinbar holds a B.S.C.E. from Polytechnic University, Brooklyn, NY; and an M.S.C.E. from Northwestern University. He is a Registered Professional Engineer in New Jersey.

### Eyre Earns P.E. Rank

Kenneth M. Eyre, Greeley and Hansen/Northeast, Engineers, has earned the rank of "Professional Engineer," having recently passed the Professional Engineer licensing examination in the Commonwealth of Pennsylvania.

Affiliated with Greeley and Hansen since 1978, Eyre is based in the firm's Philadelphia office. His experience includes: water and sewerage facilities planning, industrial wastewater pretreatment, infiltration/inflow studies, operator training, and construction related services pertaining to water and wastewater treatment systems.

Eyre is a member of the American Public Works Association. He holds a B.S. degree in Civil Engineering/Construction Technology from Temple University, Philadelphia, PA.

The Philadelphia Section congratulates Mr. Kinbar and Mr. Eyre on their accomplishments.

**INVITE YOUR  
ASSOCIATES TO  
ALL ASCE MEETINGS  
WITH YOU!**