

the news



FIRST CLASS MAIL

Presorted
1st Class Mail
U.S. Postage Paid
Philadelphia, PA
Permit No. 1845

PHILADELPHIA SECTION
AMERICAN SOCIETY OF CIVIL ENGINEERS

P. O. Box 58186, Philadelphia, PA 19102-8186

Vol. 63-6

Our 77th Year

April-May 1991

APRIL JOINT DINNER MEETING

Philadelphia Section, American Society of Civil Engineers
Philadelphia Post, The Society of American Military Engineers

WEDNESDAY, APRIL 10, 1991

Location: OFFICER'S CLUB, U.S. NAVAL BASE, PHILADELPHIA
Cocktails - 5:30 p.m. Dinner - 6:30 p.m. Meeting - 7:30 p.m.

SUBJECT: WETLANDS AND THE COURTS - TAKING AND ENFORCEMENT ISSUES

SPEAKER: CAROL R. COLLIER, Vice President, BCM Engineers, Inc. - Moderator
JAMES BUTCH of the Wetlands Section, EPA Region 3-"A Case on Wetlands Enforcement"
BARRY GALE, ESQUIRE, Philadelphia District, U.S. Corps of Engineers Office of Counsel
- "The Loveladies Harbor, Inc. Case"

Carol R. Collier, has a background in biology and planning, and has been dealing extensively with wetland and water quality issues during her 14 years with BCM Engineers, Inc.

James Butch will present a recent case on wetlands enforcement. John Pozsgai, a mechanic from Morrisville, PA, was sentenced to a three year jail term and payment of fines for filling five acres of wetlands around his home. Jim will present the events leading up to the case and address why EPA decided to take enforcement action.

Barry Gale, Esq. will present the Loveladies Harbor Inc. case in which a developer was awarded \$2.6 million judgement after finding that the denial of a Section 404 permit by the Corps of Engineers resulted in an unconstitutional taking of private property without just compensation. In the Town of Loveladies on Long Beach Island, NJ, the developer was denied a permit to fill 12.5 acres of wetlands for a residential development adjacent to his 200+ acre development already under construction.

Bring your questions! It should prove to be an interesting, informative evening with lively discussions.
SPECIAL FEATURE: Spring Garden College Night

**PLEASE FILL OUT AND RETURN RESERVATION COUPON
AS DIRECTED ON PAGE 2 - FOR THE APRIL 10, 1991 MEETING**

ACI SEMINAR ON CONCRETE REPAIR

Learning about the newest repair solutions can help to reduce errors and needless work later on. The Delaware Valley Chapter of the American Concrete Institute is conducting a seminar that will be of practical value to designers, engineers, maintenance engineers, contractors, material suppliers, architects and owners.

Harold G. Greve with Fed, Kaminitzky & Cohen P.C. New York City and Material Consultant Raymond Schutz from Waupun, Wisconsin will be on hand to help participants learn: 1) how to identify causes of deterioration 2) current repair techniques; 3) selection of materials and costs. The seminar will conclude with discussions on the various repair techniques and materials and present actual case studies.

This seminar is scheduled for presentation on **Tuesday, April 23, 1991** at the Holiday Inn in King of Prussia. The cost for the one day seminar is \$225 for members of ACI and \$245 for non-members. All seminar participants get a seminar course manual which includes recent articles on concrete repair excerpted from *Concrete International*, ACI reports and other documents. Lunch is also included in the seminar fee as is a six-month membership in ACI.

More info on this seminar is available from the Seminar Registrar, American Concrete Institute, P.O. Box 19150, Detroit, MI 48219 or call (313) 532-2600 or fax (313) 533-4747 or locally from **Helmuth Wilden, P.E.**, H. Wilden & Associates, Inc., 315 East Main Street, Macungie, PA 18062 or call (215) 966-3935 or fax (215) 966-4515.

TECHNICAL GROUP ACTIVITIES Geotechnical and Environmental/Water Resources Groups

(Combined program for 1990-1991)

April Meeting

Date: **Tuesday, April 16, 1991, 7:00 pm**

Location: Hill Seminar Room, LeBow Engineering Center, Market & 31st Sts., Drexel University, Philadelphia, PA

SUBJECT: Data Validation for Bench Scale Feasibility Studies

SPEAKERS: Arun K. Gaid, Gaid & Associates, Inc. and **John Gee**, EEC Environmental, Inc.

As part of ongoing remediation at a Superfund (CERCLA) site, a bench scale bioremediation study was conducted. The objective of this investigation was to determine if the contaminant, bis (2-ethylhexyl) phthalate (BEHP) in the soil was amenable to biological treatment.

May Meeting

Date: **Tuesday, May 21, 1991, 7:00 pm**

Location: Hill Seminar Room, LeBow Engineering Center, Market & 31st Sts., Drexel University, Philadelphia, PA

SUBJECT: Value-Engineered Cap Design

SPEAKER: Dr. Daekyoo Hwang, P.E., Canonie Environmental Services Corp., Inc., King of Prussia, PA

In the remediation of contaminated sites and providing environmentally sound yet cost-effective disposal of present and future wastes, there is a tendency to follow prescriptive design methods when alternative methods that meet the performance intent of the regulations can be developed. One such area is the final closure and capping of hazardous waste disposal sites.

For further information, please contact: **Dr. J.P. Martin**, Dept. of Civil & Arch. Eng'g., Drexel University, Philadelphia, PA 19104, (215) 895-2363 or **Mr. Raymond A. Lees**, Westinghouse Env & Geotech Svcs, 323 Norristown Rd., Ambler, PA 19002, (215) 542-9100.

NOTICE

Due to circumstances beyond control, the Concrete Canoe Races scheduled for Sunday, April 7, 1991 as announced in THE NEWS, March, 1991, has been cancelled.

**RESERVATION FORM FOR PHILADELPHIA SECTION ASCE APRIL DINNER MEETING
WEDNESDAY, APRIL 10, 1991 – OFFICERS' CLUB, US NAVAL BASE, PHILA.**

Please reserve _____ dinner(s) at \$15.00 each. Check enclosed \$ _____.
Students – \$7.50 You are welcome to attend after Dinner, at no charge.

Name _____

Address _____

Phone _____

Please return with payment to:
ASCE, P.O. Box 58186
Philadelphia, PA-19102-8186
Reservations must be postmarked
no later than **April 8, 1991.**
Tickets will be issued at the door.

I prefer future Section Meetings to be held at:
Name of Restaurant/Club _____
County Location & Address _____

IMPORTANT: Dinner Reservations for ALL Section Meetings Are Essential. Please mail in Your Reservation Coupon As Directed.

WANTED: YOUR MEETING LOCATION PREFERENCES

Please indicate the addition – in the dinner reservation coupon – of a request for your preference of location for future Phila. Section meetings (beginning in the 1991-1992 year). The Program Committee and Board of Directors of the Section will evaluate these preferences in planning for next year's regular monthly meeting schedule. Please send in coupon to provide this information, whether or not you are reserving for dinner.

The Social Event of the Year!!
The Fabulous Annual Dinner Dance
Saturday, June 1, 1991
at
Holiday Inn

City Avenue & Presidential Blvd, Philadelphia, PA
Parking on Premises

6:30 PM Cocktails (Cash Bar)

Hot & Cold Hors d'Oeuvres

7:30 pm Dinner

Choice of Roast Sirloin of Beef with Chasseur Sauce
or Poached Norwegian Salmon with Dill Sauce

Music for your listening and dancing pleasure provided by

“Moments to Remember”

PRESENTATION OF AWARDS
COME JOIN YOUR FRIENDS FOR FUN

Send for your tickets today!... Guests welcome!

\$37.50 per person

Consultants, Contractors, Etc. — Reserve tables for your firms.

Please make checks payable to “Phila. Section, ASCE” and mail to:
Phila. Section, ASCE, P. O. Box 58186, Philadelphia, PA 19102-8186
Confirmations will be mailed after check is received.

Please indicate entree choice(s).

**PHILA. SECTION, ASCE
OFFICERS 1990-1991**

PRESIDENT

Francis J. Depman

VICE PRESIDENTS

Moustafa A. Gouda (President-Elect)

Klaus K. Fuelleborn

SECRETARY

Robert M. Wright

TREASURER

Thomas J. Branigan

ASSISTANT TREASURER

Darin L. Gatti

MEMBERSHIP SECRETARY

Drew S. Mihocko

DIRECTORS

Patrick R. Cairo Sheldon A. Kinbar
William G Richards William H. Polk
Joseph P. Martin David A. VanOcker

John Vitillo (Reading Branch)

PAST PRESIDENTS

Norman G. Weintraub

Susan K. Lior

J. Richard Weggel

Rodolfo Wahanik – President, Reading Branch

President - Francis J. Depman
Kaufman Construction Co.
4000 Pulaski Ave.
Philadelphia, PA 19140
(215) 223-4700

Secretary - Robert M. Wright
City of Philadelphia
Department of Streets
920 Municipal Services Building
Philadelphia, PA 19102
(215) 686-5538

PUBLICATIONS COMMITTEE
Chairman and Editor of THE NEWS
Sidney Robin
Associate Editor – Joseph R. Szymick
Staff Writers
Wm. G. Richards Robert M. Wright

Publications Coordinator

Albert M. Tantara

SEND COPY TO:

Sidney Robin

64 Nancy Drive

Richboro, PA 18954

(215) 322-7464

MARCH JOINT DINNER MEETING

March 12, 1991

Harbor League Club, Camden, NJ

THE PORT OF PHILADELPHIA

By Bill Richards, Staff Writer

An excellent turnout of members, guests and students gathered for our meeting at the handsome ballroom of the Harbor League Club in Camden, NJ. This was a Joint Meeting of the Philadelphia and South Jersey Branch, New Jersey Sections of ASCE, an annual event we all hope will become a long-lasting tradition. The session featured an informative and provocative panel discussion on the subject: "Port of Philadelphia: Problems and Prospects for the 21st Century," an issue of great importance on both sides of the Delaware River.

The assembly was jointly presided by South Jersey Branch President **Ted Wioncek** and Philadelphia Section President-Elect **Moustafa Gouda**. Our Section President **Frank Depman** was hospitalized and unable to attend, and we all offer Frank our hopes, wishes and prayers for a complete and speedy recovery.

Villanova and Widener Night

The meeting honored the ASCE Student Chapters, faculties, alumni and Civil engineering Departments of Villanova and Widener Universities. For the Villanova presentation, **Dr. Lewis J. Mathers**, Chairman of the Department of Civil Engineering, thanked the Sections for their recognition, and reviewed continuing and planned new programs available to the school's C.E. students.

Villanova Student Chapter Update

ASCE Student Chapter President **Carl Erler** introduced his fellow officers: Vice President, **John Coscia**; Treasurer, **Peter Gagnon**; Secretary, **Margaret Nahas**; EJC Representative, **John Paul Cunningham**; and Faculty Advisor, **Mr. Frank Falcone**; and other Chapter Members in attendance.

President Erler briefly summarized the busy activities of the fast-growing 109-member Chapter. Meetings speakers have featured noted Consulting Engineers in private practice; City Public Works Department engineers (including our own Phila. Section Secretary and Vice-President designate and THE NEWS staff writer, **Robert M. Wright**, Project Engineer, Major Highways Section, Dept. of Streets). The Chapter participates in the Model Bridges Contest; and in the design, construction and competition of the Annual Concrete Canoe Races on the Schuylkill River. It also schedules several other athletic and social functions in its full schedule.

Widener University Spotlighted

The Widener ASCE Student Chapter boasted a large turnout at the meeting. Faculty member, **Prof. Scheyla Adibi** - substituting for Faculty Advisor, **Dr. Ronald Mersky**, who was unable to attend - reviewed programs and progress in the Civil Engineering school, which numbers 101 students, the second largest in the Engineering College of the University. Dr. Adibi pointed with pride to several National ASCE Awards recently achieved by distinguished Widener faculty members.

Widener ASCE Student Chapter President **Keith D'Ambrosio** thanked the Sections for their courtesies and presented his fellow officers: Vice President, **Neal Kolb**; Treasurer, **Saul Melman**;

Secretary, **Bill Gaus**; and the large Chapter contingent in attendance. Keith explained several C.E. Seminar projects which embraced very sophisticated undertakings involving both laboratory construction and experimentation, as well as research. The Chapter has conducted many field trips to large public works and private building projects.

Weggel Moderates Panel Discussion

Past-president **J. Richard Weggel** moderated the featured event of the evening, the panel discussion on the Port of Philadelphia which had been arranged by Rich and ASCE Director **William H. (Bill) Polk**. The discussion brought to the podium four distinguished and knowledgeable individuals, each presenting a slightly differing viewpoint on the actions necessary to improve the future of our port. The speakers were **Susan A. Howland**, Manager of Public Affairs for the Port of Philadelphia Maritime Exchange; **John P. LaRue**, Executive Director of the Philadelphia Regional Port Authority; **Major John Gessner**, Deputy District Engineer, U.S. Army Corps of Engineers, Phila. District; and **Joseph Balzano**, Executive Director, and CEO of the South Jersey Port Corporation. Major Gessner substituted for the originally scheduled panelist, **Lt. Col. Kenneth H. Clow**, Commander and District Engineer, U.S. Army Corps of Engineers, Philadelphia District, who was on special assignment and unable to participate.

Susan Howland addressed the meeting first, and described the Maritime Exchange as representing over 200 port-related businesses. She introduced the concept of intermodalism which was referred to by each of the subsequent speakers. This concept recognizes the goods moved by more than one mode of transportation and that the Port must be able to accommodate transfers between these modes, namely ship to rail and ship to truck. The development of a Railport and the purchase of the Delaware and Hudson RR were examples of steps to improve the Port's intermodal capability. Susan appealed to the membership of ASCE to let our politicians know that we are supporters of the efforts to improve the Port.

John LaRue was the next speaker. He emphasized the improvement that has occurred with the state-sponsored Philadelphia Regional Port Authority replacing the Philadelphia Port Corporation. Foremost among these improvements was the infusion of \$57 million in capital funds. John's presentation emphasized three areas of opportunity for improvement: infrastructure, intermodalism and dredging. Infrastructure improvements that he referred to included fruit and perishable handling facilities, forest product handling facilities, and the Packer Avenue Container Facility. His intermodalism discussion mirrored Susan's earlier thoughts and emphasized port unification. He ended by pointing out the importance of maintaining the channels and berths of the Port while recognizing the environmental concerns of dredge materials and disposal.

Major John Gessner highlighted the Corps of Engineers role in maintaining the Delaware as a navigable river. He pointed out that the existing 40 ft. deep channel is limiting the use by excluding the large super petroleum tankers. The slowness of the Port to modernize has hurt in being able to accept container shipping. John described Corps participation in projects of note including the dredging of the main channel from Phila. to the ocean, Salem River modernization, the Beckett Street Terminal in Camden, the Tioga Street Terminal and the deepened C&D Canal. Major Gessner ended by calling for a consensus on the direction of improvements from the various Port organizations, unification, and the development of a strategic plan.

John Balzano concluded the panelists' presentations with a mixture of vision and pragmatism. He pointed out areas that impact negatively upon the Port of Philadelphia's competitive edge with other ports. We are located 90 miles from the ocean, have higher labor and insurance costs, land development has escalated the cost of shore/pier property, and major environmental issues are delaying planning and investment. Joe briefly promoted the visionary concept of a port at the mouth of the Delaware Bay and how it could address or avoid these and other (such as handling supertankers) issues, but realistically described how the investment in present facilities and the competitive disadvantage during construction will prevent this from occurring. Joe then proceeded to describe the steps needed to make the most of what we have. This includes incorporating rail transportation and better highway access, bringing waterfront labor organizations into the planning process with management, and because of the major delays with environmental permitting, preferring modification of existing facilities to entering into new construction.

Discussion Period

A very enlightened question and answer session followed, that was made particularly lively by the participation of members of the Delaware River Port Authority who were present, and who emphasized the willingness of DRPA to invest in improvements that have the consensus backing of Port organizations. The interchange between audience and panel members covered such topics as: whether intermodal improvements foster Port unity or increase competition within the Port; how well the Port organizations are able to work with environmental regulatory agencies; whether the Port should be working to recover lost markets from other Ports (central PA from Baltimore and Norfolk) or to gain new markets (Canada); and each panel member's definition of what constitutes Port unification. We thank each of the panel members for an exceptionally informative, in-depth analysis of the Port of Philadelphia's financial problems, planning ramifications, and future prospects in an ever-changing regional economic climate, as well as that of the nation and the world.

The Section is indebted to Dr. Weggel and Mr. Polk, for their splendid job of arranging this meeting.

Congratulations, too, to President-Elect Gouda for his outstanding presiding at the main meeting and conducting the Board of Directors meeting prior to the Joint Sections Meeting.

Editorial

**THE DEPMAN PRESIDENCY:
A STUDY IN QUIET DIPLOMACY**

By Sid Robin, Editor

Francis J. Depman – “Frank” to us and all his friends and associates – assumed the Presidency of the Phila. Section, ASCE at a turning point in its history: the closing of the Engineers’ Club at 13th & Juniper Streets, Phila. His first challenge was to marshal all the forces within our organization to locate new headquarters. He handled the task with the despatch which was to characterize his entire activist service in the highest office of the Section. With competent staff to assist him, a program of monthly meetings at various interesting locations was devised. Included were several Joint Meetings – with the Reading Branch, the American Society of Highway Engineers (ASHE), the American Public Works Association (APWA), the South Jersey Branch, New Jersey Section; and the Society of American Military Engineers (SAME) – all well attended, well arranged, and all interesting and enlightening. A survey among the Phila. Section membership is currently under way, under Frank Depman’s direction, to solicit members’ preferences for locations of future meetings (see Reservation Coupon and article at top of page 2 of this issue of THE NEWS). These suggestions will be evaluated in the Program Committee planning to be underway shortly.

Frank Depman has demonstrated during his term that his apparent quiet demeanor retreated, without hindrance or conflict, to vocal and dynamic concern and firm action whenever benefits on behalf of ASCE in general, the Phila. Section and its members in particular, and the Delaware Valley engineering community, were of foremost importance. Certainly, this *modus operandi* has been the keystone of his success as a high official of one of the area’s major construction firms, with which he has been affiliated almost from the moment of his graduation from engineering school. In all his dealings, be they professional or personal, the deceptive appearance of passiveness obscures the great quality of firm and decisive movement whenever it is necessary.

Through Frank’s skillful direction, the integrity and vitality of the Section’s Technical Groups have been maintained. Recently, he succeeded in reviving the Younger Member Forum with the recruitment of Section member **Richard P. Markwith, P.E.**, a promising young engineer who will do his utmost to enlist and maintain the interest of Younger Members to participate fully in Section affairs.

Standing, Special Task and *Pro Tempore* Committees were fully implemented or reorganized where necessary to improve efficiency and accomplishment of objectives. The area ASCE Student Chapters’ programs, especially the policy of honoring them and the Civil Engineering Departments of their colleges and universities at monthly meetings, was pursued with continuing enthusiasm. The Section’s Reading Branch officials and members were invited to Section Main and Board of Directors meetings, and the Branch was recognized and praised for its own vitality and valued contributions

to the Section’s achievements.

Frank Depman’s modest and unselfish nature is manifested in the closing sentence of his Presidential Message (THE NEWS, October, 1990): “...Let’s all work together to make 1990-1991 a banner Philadelphia Section year...” Indeed, it was a banner year, and we thank you for it, Frank. We know, too, that the Section will be the beneficiary of your gifts and leadership for many more years of your active participation; and that these contributions will not end when you hand over the presidential gavel to the new incumbent at the Section’s Annual Dinner Dance at the Holiday Inn on June 1, 1991. As has been the tradition in Phila. Section Past Presidencies, you will **not** be “put out to pasture,” but you will stay to reward us with your magnificent talents. Again, thank you for a job well done!

And now, we await with enthusiasm the ascendancy of **Moustafa Gouda** to the Presidency. Your past dedication to Section activities and accomplishments bode well the things to come with your leadership. Count on us all to help you. Good Luck and Godspeed!

ATTENTION YOUNGER MEMBERS!

Rich Markwith Has Arrived

After a brief hiatus the Younger Member Forum of the Philadelphia Section, ASCE, is swinging back into action. The Board of Directors, continuing its commitment to involving and developing its young members, recently appointed **Rich Markwith** as President of the Younger Member Forum.

For those of you who don’t know him, Rich has been working in the Philadelphia consulting community for the past 4 years and is presently employed by Frederic R. Harris Inc. where he is a Principal Structural Engineer involved in bridge, railroad and highway projects. A 1984 graduate of Lehigh University, Rich is currently enrolled in the Wharton Management Program at the University of Pennsylvania.

The Forum is intended to provide a place for young members to share their concerns, both professional and technical, as well as to promote their involvement. To this end activities and programs are underway to increase the participation of our younger members in Section activities and as a Group. Any suggestions will be greatly appreciated.

If you don’t classify yourself as a young member, perhaps you should reconsider. ASCE National defines *young member* as those 32 years old and under. So don’t be afraid to count yourself in and take part.

It should be of interest to Philadelphia Section Younger Members to attend the coming meeting of the South Jersey Branch, New Jersey Section, ASCE Younger Member Forum – their final meeting of the 1990-1991 season.

The principal speaker will be Philadelphia Section’s own C.R. “**Chuck**” Pennoni, National ASCE President-Elect, whose subject will be: “*Civil Engineering: Entering the 21st Century.*” The meeting will give Delaware Valley ASCE Younger Members an excellent opportunity to meet ASCE’s

NOMINATIONS FOR OFFICE Philadelphia Section, ASCE 1991-1992

In accordance with the Constitution and By-Laws of the Philadelphia Section, ASCE, the Nominating Committee appointed by President Francis J. Depman has submitted the following slate of nominees for elective office for the 1991-1992 administrative year!

President – Moustafa A. Gouda (one year)

President-Elect (First Vice President) –

Klaus K. Fuelleborn (one year)

Second Vice President – Robert M. Wright
(one year)

Secretary – Drew S. Mihocko

(one year to complete term of Robert M. Wright)

Membership Secretary – George J. Stanley

(two years)

Treasurer – Darin L. Gatti (two years)

Director – Stephen G. Jochum (two years)

Director – Joseph P. Martin (two years)

Director – Norman G. Weintraub (two years)

Director for Reading Branch (one year) –

To Be Announced

Offices in which incumbents have one year remaining to serve are: Director – Sheldon A. Kinbar; Director – William H. Polk; Director – David A. VanOcker

Past Presidents to serve on the Board of Directors are: Susan K. Lior (one year remaining); J. Richard Weggel (two years remaining); Francis J. Depman (three years)

The Nominating Committee also recommended as a new member of the Philadelphia Section’s Humphrey Fund Committee: Mr. David Silverman.

The above slate of nominees was announced by Committee Chairman J. Richard Weggel at the March 12, 1991 Joint Meeting of the Philadelphia Section and South Jersey Branch of the New Jersey Section, ASCE at the Harbor League Club, Camden, NJ. If no additional nominees shall have been submitted and received by April 1, 1991, the above slate of nominees shall have been declared elected at that time and will be installed at the Section’s Annual Dinner Dance at the Holiday Inn, City Line Avenue, Philadelphia, on Saturday evening, June 1, 1991.

Members of the Nominating Committee are: J. Richard Weggel, Chairman; Francis J. Depman, Susan K. Lior, Sidney Robin, Joseph R. Szymick, and Norman G. Weintraub.

next National President, who is one of the top engineers of the nation. All ASCE Younger Members and their guests are encouraged and welcome to attend.

Date: **Monday, April 8, 1991**

Location: The Sheraton Postle Inn, Route 70 and I-295, Cherry Hill, NJ

Cocktails – 5:30 pm Dinner – 6:30 pm Cost – \$20.00

For further information and reservations for the South Jersey Branch meeting, please contact immediately: **Richard P. Markwith, Jr., P.E.**, Frederic R. Harris, Inc., The Atlantic Building, 260 South Broad Street, Suite 720, Philadelphia, PA 19102, (215) 735-0832.

1991 Philadelphia Section ASCE – Salary and Benefits Survey

In order to aid our members and their employers to intelligently determine satisfactory salaries and benefits, the Philadelphia Section of the American Society of Civil Engineers is making a bi-annual survey of its members. Please complete this questionnaire, fold so that the return address is on the outside, tape and return as soon as possible. The results will be published in the first issue of THE NEWS in the Fall.

A. PERSONAL DATA

1. Age _____
2. Years of full-time employment _____
3. Race
 - _____ a Caucasian
 - _____ b Negro
 - _____ c Hispanic
 - _____ d Asiatic
 - _____ e Other _____
4. Sex
 - _____ a Male _____ b Female
5. Education (Check highest level)
 - _____ a No Degree
 - _____ b Bachelor's Degree
 - _____ c B.S. Degree+15 hours
 - _____ d Master's Degree
 - _____ e Doctorate Degree
6. ASCE Membership Grade
 - _____ a Student
 - _____ b Associate
 - _____ c Member
 - _____ d Fellow
 - _____ e Life
7. Registration

no	yes (number of states)
_____	_____
	a EIT
	b PE
	c LS
8. Other Membership

Indicate the number of Professional/Technical Organizations other than ASCE of which you are a dues-paying member (i.e.: NSPE, ACI, AWWA, ASTM, etc.)

B. EMPLOYMENT DATA

1. Income source
 - _____ a Self-employed
 - _____ b Salaried
 - _____ c Commissioned
 - _____ d Retired
 - _____ e Unemployed
 - _____ f Student

2. Type employer or self-employment (Check one)

- _____ a Consultant
- _____ b Contractor/Builder
- _____ c Federal Gov.
- _____ d State Gov.
- _____ e Municipal, Local or Regional Gov. or Auth.
- _____ f Utility (Private & Public)
- _____ g Manufacturer
- _____ h Education
- _____ i Sales
- _____ j Other (explain) _____

3. Primary Responsibility (Check one)

- _____ a Technical
- _____ b Sales
- _____ c Supervisory
- _____ d Administrative
- _____ e Other (explain) _____

4. Do you supervise other people?

- _____ a Yes _____ b No

5. Number of different employers since graduation (including current) _____

6. Do you hold a second job?

- _____ a Yes _____ b No

7. Years with current employer _____

8. Primary County of Employment (Check one)

- _____ PA a Bucks
- _____ b Chester
- _____ c Delaware
- _____ d Montgomery
- _____ e Philadelphia
- _____ NJ f Burlington
- _____ g Chester
- _____ h Gloucester
- _____ i Other (Identify _____)

9. Method of Commuting (Check one)

- _____ a Drive
- _____ b Mass Transit
- _____ c Car Pool
- _____ d Walk
- _____ e Drive and Mass Transit
- _____ f Other (Identify _____)

10. Approximate commuting time (one way _____)

C. SALARY AND BENEFITS

1. Salary (include normal overtime) \$ _____ per yr.
2. If bonus or commissions are paid in addition to above salary, indicate expected amount per year _____
3. Overtime Remuneration
 - _____ a None
 - _____ b Time (Compensatory)
 - _____ c Paid at regular pay rate
 - _____ d Paid at time&a half rate
 - _____ e Double Time
4. Vacation (incl. Admin. Leave, Personal Days, etc.) _____ days
5. Holidays _____ days
6. Sick Leave (number of days at full salary) _____ days
7. Insurance (Company Paid) (For "a" thru "h" fill in:
 1. 100% company paid
 2. Partially company paid
 3. Available, employee pays all
 4. Not available
 - a Hospitalization _____
 - b Major Medical _____
 - c Dental _____
 - d Optical _____
 - e Disability _____
 - f Life _____
 - g Legal Fees _____
 - h Child Care _____
8. Pension Plan _____ yes _____ no

If yes:

% company paid _____

Employee contrib. _____
9. Profit Sharing

yes _____ no _____

not applicable _____
10. Formal severance pay policy

yes _____ no _____
11. Contributing Education tuition reimbursement

yes _____ no _____

If yes, maximum % _____

D. OPINIONS

1. Are you satisfied with your current employment situation?

- a Unsatisfied
- b Somewhat unsatisfied
- c Satisfied
- d Mostly satisfied
- e Very satisfied

2. Do you believe that, in your current employment situation, you are performing true engineering work.

- a Yes
- b No, primarily administration, supervisory, business, promotion, etc.
- c No, primarily technician/draftsman
- d No, other functions

3. Do you believe that your work is properly reviewed?

- a Yes
- b Yes, but could be better
- c No
- d Not applicable

4. Do you think you will be looking for a new job within the next 2 years?

- Yes No If Yes, why?
- a Salary
- b Boss
- c Lack of responsibility
- d Other (Explain)

5. If you were looking for a new job, what would be your most critical concern?

- a Pay and benefits
- b Company reputation
- c Responsibility
- d Security
- e Location
- f Type of work
- g Other (explain) _____

6. How easy do you believe it would be for you to find a new job?

- a Very easy
- b Easy
- c Somewhat difficult
- d Difficult

7. Do you believe your salary, considering your experience and ability, compared to other Civil Engineers, is:

- much lower
- lower
- similar
- higher
- much higher

8. Do you believe your fringe benefits, compared to other Civil Engineers, are:

- much lower
- lower
- similar
- higher
- much higher

9. Is your professional physical environment (office appearance, privacy, secretarial support, etc.) important to you?

- a Yes b No

10. Are you satisfied with your professional physical environment?

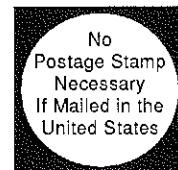
- a Yes b No

11. Do you agree or disagree with the following statements?

agree disag.

- a. Registration should be required for all Engineers as a condition of continued employment
- b. Continuing Education should be required to maintain registration
- c. Consulting work may be competitively bid when the requirements are reasonably well defined
- d. Advertising, by engineers, that is not self-laudatory is acceptable
- e. There is currently a shortage in the number of Civil Engineering Graduates

Additional comments and suggestions for future questions: _____



BUSINESS REPLY MAIL
First Class Permit No. 1845 Philadelphia, PA

Norman G. Weintraub, P.E., ASCE
Philadelphia Water Department
4th Floor, ARA Tower
1101 Market Street
Philadelphia, PA 19107-2994

IMPORTANT MEETINGS MESSAGE TO PHILA. SECTION MEMBERS

Please be advised that we will begin our 1991-92 Section Meeting program on **Wednesday, September 11, 1991**. The first meeting will be a Luncheon Meeting and it will be conducted in the *Downtown Club*, located in the *Public Ledger Building*, 6th and Walnut Streets (Center City).

The principal speaker for this meeting is Philadelphia Section Past President and 1991 Philadelphia Civil Engineer of the Year **James W. McPhillips** of Urban Engineers Inc. The topic of discussion will be "*Philadelphia's Expressways*." It will review the history of the development of the Interstate and limited access highway system which was completed within the City with the recent opening of the long-awaited Vine Street Expressway (I-676), as well as the plans for the modernization of this system to bring these roads into the 21st century.

The meeting will begin with lunch at **11:45 am** followed by the program at **12:30 pm**. The cost of lunch will be **\$16.00**. **Reservations will be required** and the form at the bottom of this flyer should be returned with payment to reserve space at the meeting.

To enable you to plan ahead, we have listed the Tentative 1991-92 Meeting program below for your information. Please mark your calendar accordingly. More details, possible date and topic changes, and reservation forms will be published in future issues of THE NEWS.

October 9	Downtown Club	Speak/topic TBA*
November 20	Williamson's City Line (Joint meeting with AWWA)	Cathodic Protection W. Shutt
January 8	King of Prussia Holiday Inn (Joint meeting with ASHE & Reading Branch)	Topic TBA M. Hanlon, Del. Val. Eng. of Year
February 19	Harbor League Club/Camden (Joint meeting with South Jersey Branch)	Specialty Certification C. Pennoni, ASCE President
March TBA	Delaware River Cruise/Spouse Event	Speaker/topic TBA
April TBA	Naval Base (Joint meeting with SAME)	Meridian Plaza Fire Panel discussion (TBA)

*To be announced

RESERVATION FORM FOR PHILADELPHIA SECTION ASCE SEPTEMBER LUNCHEON MEETING WEDNESDAY, SEPTEMBER 11, 1991 - DOWNTOWN CLUB

Please reserve _____ lunch(es) at \$16.00 each. Check enclosed for \$_____.

Name _____

Address _____ Telephone _____

Please return with payment to ASCE, PO Box 58186, Philadelphia, PA 19102-8186.

Deadline for reservations is **SEPTEMBER 5, 1991**. Make check payable to "**Phila. Section, ASCE.**"