

the news



Address Service Requested
FIRST CLASS MAIL

Presorted
1st Class Mail
U.S. Postage Paid
Philadelphia, PA
Permit No. 1845

PHILADELPHIA SECTION
AMERICAN SOCIETY OF CIVIL ENGINEERS

P. O. Box 58186, Philadelphia, PA 19102-8186

Electronic Message Hotline: (215) 934-3639 (24 hours a day)

Vol. 71-3

Our 85th Year

December, 1998 - January, 1999

NO MAIN SECTION MEETING DECEMBER 1998

JANUARY JOINT DINNER MEETING

Philadelphia Section, American Society of Civil Engineers
Delaware Valley Section, American Society of Highway Engineers (ASHE)
Reading Branch, Philadelphia Section, ASCE

WEDNESDAY, JANUARY 13, 1999

HOLIDAY INN • King of Prussia, PA • See Location Map Below
Cocktails - 5:30 p.m. • Dinner - 6:30 p.m. • Meeting - 7:30 p.m.

SUBJECT: "In Search of Excellence"

SPEAKER: Elizabeth S. Voras, Deputy Secretary for Aviation, Rail and Ports, Pennsylvania Department of Transportation

SPECIAL FEATURE: DREXEL UNIVERSITY NIGHT

The ASCE Student Chapter, Alumni and Faculty of the Civil and Architectural Engineering Department of Drexel University will be honored at this meeting. All Students, Faculty and Alumni are cordially invited.

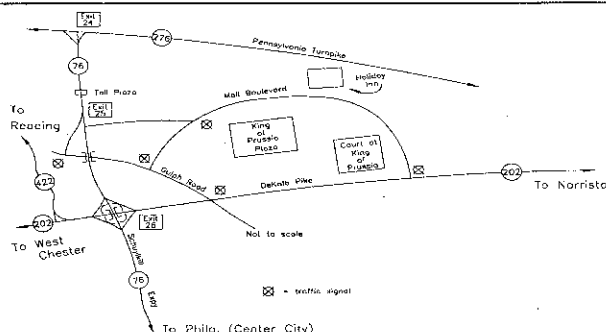
RESERVATIONS MUST BE SUBMITTED BY FRIDAY, JANUARY 8, 1999. Please send your check for the number of attendees @ \$25 per member or guest; \$13 ASCE Student Members, payable to the Phila. Section, ASCE, P.O. Box 58186, Phila., PA 19102-8186; or call the electronic Message Center: **(215) 934-3639** (Open 24 hours/day).

Deputy Secretary Voras will review PennDOT's Quality Initiatives. These initiatives utilize the Malcolm Baldrige criteria, and are entitled: "In Search of Excellence." With the benefits of strong quality programs increasing in the Transportation industry, this topic should be very enlightening for all the attendees.

Elizabeth Sarge Voras began as Deputy Secretary for Aviation, Rail Freight and Ports with the Pennsylvania Department of Transportation on April 10, 1995. As Deputy Secretary, she directs the efforts of employees to enhance the Commonwealth's aviation and rail freight network, as well as assuring the integration of rail freight and port development to improve the flow of bulk goods and commodities over both systems.

The Deputate's customers include the managers and shippers that operate or use the 500 airport

(Continued on Page 2)



LOCATION MAP for Holiday Inn, King of Prussia, Pennsylvania

TECHNICAL GROUP ACTIVITIES

Geotechnical and Environmental/ Water Resources Group

(Combined Program for 1998-99)

LOCATION: Drexel University
Hill Conference Room,
LeBow Engineering Center
31st & Market Sts., Philadelphia
6:30 - 9:00 pm

CONTACTS: Dr. J.P. Martin, (215) 895-2363
Dr. S.C. Cheng, (215) 895-2996

Program: For the program, the committee is presenting a series of speakers on the range of geotechnical and geoenvironmental practice, including professional issues as well as technical projects.

January 19, 1999

Slope Stabilization, Cherry Island Landfill; William Deutsch, R.F. Weston

February 16, 1999

Exploration and Earthwork Design, Nooristown PA Turnpike Widening; Bashar Qubain, Valley Forge Laboratories

Engineering Management Group

March Luncheon Meeting

DATE: Wednesday, March 10, 1999, 12:00 noon
LOCATION: Municipal Services Building, 1401 John F. Kennedy Blvd., Conference Room 16C, Philadelphia, PA

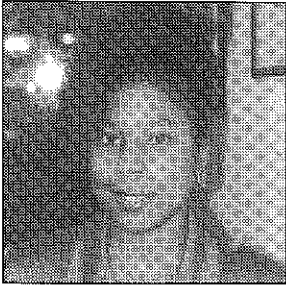
SUBJECT: "Deconstructing One Meridian"

SPEAKER: Richard F. ("Dick") Rowe, P.E., A.I.A., Principal/Chief Engineer, Kling Lindquist
PRICE: \$10 (Students & Retired Persons \$5)

Mr. Rowe will discuss the events that led to the Meridian Building's deconstruction which is currently underway. It should be an interesting update on one of Philadelphia's major disasters and the technical and legal challenges faced by all involved.

A buffet lunch will be served at 12:00 noon and Mr. Rowe's presentation will begin at 12:30 PM. Seating is limited. For reservations, contact **Den-nis MacBride**, Chairman at **(215) 580-7084** no later than **Wednesday, March 3, 1999.**

(Continued on Page 2)



THE PRESIDENT'S MESSAGE

In my last message, I touched briefly on some of the highlights of the 1998 ASCE National Convention. However, I would be remiss if I did not mention what a fantastic job **Dave Hanly** did in preparing a paper on "The City Plan for Philadelphia: A National Civil Engineering Landmark." This paper was presented at the conference by **Chris Menna** who gave the audience a grand finale. Great teamwork, guys! It was this plan which led to the Section receiving National's History and Heritage Citation which **Joe Syrnick** and I graciously accepted.

The University of Arkansas conducted a survey of 52 Departments of Civil Engineering. 32.4% of these departments required less than 130 hours to graduate, 50% between 130 and 136 hours, and 17.6% greater than 136 hours. Some 15 Departments said that they are under pressure to further reduce credit hours for graduation. This leads into the First Professional Degree issue which was approved by the Board of Direction. The Board voted to approve a policy statement which supports the concept of the Master's degree as the First Professional Degree for the practice of civil engineering at a professional level. For further details, visit our web page.

I also had the honor of witnessing the installation of ASCE Honorary members. There were ten out of the more than 120,000 members of ASCE.

One of our responsibilities as an ASCE member is to inform the public of the valuable contributions that engineers make to society. Therefore, I am challenging the Section and the Reading Branch to find 50 members to talk to students about Civil Engineering in celebration of National Engineering Week (February 21-27, 1999). All you have to do is contact a local school (any age) and offer your services to heighten student awareness of our profession. Parents, volunteer to speak to your child's class. In fact, one of the conventioners relayed his experiences at his son's kindergarten class where he used rice crispy squares to represent aggregate and the ingredients to represent the materials. How's that for simplicity? So, call the Section hotline and identify yourself and the school which you will be attending. The Section is proud to announce that our candidate for the 1999 Delaware Valley Engineer of the Year won the election on November 4. Congratulations to **Larry Moy, P.E.**, Streets Commissioner for the City of Philadelphia. (See separate article elsewhere in this issue of THE NEWS.)

Sincerely, Sandra J. May
President, Phila. Section, ASCE

January Dinner Meeting

(Continued from Page 1)

and 323 heliports, 72 rail freight operators, and the state's inland port operators.

PennDOT's Bureau of Aviation is responsible for the operations of one state-owned airport, Grand Canyon Airport in Wellsboro, PA.

The Bureau of Rail Freight, Ports and Waterways is responsible for preserving and improving rail freight service, managing and maintaining the state owned rail lines, and providing financial and technical assistance to rail operators, owners, shippers and receivers, as well as government agencies.

Deputy Voras has worked in a number of roles in transportation. She previously was on special assignment from the Pennsylvania Turnpike Commission to the I-95 Corridor Coalition. The goal of this group, which includes all of the transportation agencies on the eastern seaboard, is to coordinate the implementation of intelligent transportation systems. Because of this, Deputy Voras is the Co-Chairperson of the Commonwealth's ITS Steering Committee.

From 1990 to 1994, Deputy Voras was a strategic planner with the Pennsylvania Turnpike Commission. From 1987 to 1990, she was Executive Director of the Senate Majority Transportation Committee. From 1985 to 1987, Deputy Voras was a Legislative Assistant to State Senator J. Doyle Corman.

Deputy Voras graduated Summa Cum Laude from Dickinson College, Carlisle, PA, with a B.A. degree. She received an M.P.A. from Penn State,

Harrisburg, and has taken courses towards a Ph.D. in Public Administration at Penn State, Harrisburg.

Deputy Voras served on numerous transportation-related community boards and task forces and is the recipient of several awards, including Phi Beta Kappa, Psi Chi, and The Chi Omega Award.

Technical Group Activities

(Continued from Page 1)

Transportation Group

February Luncheon Meeting

DATE: Thursday, February 18, 1999, 12:00 Noon

LOCATION: Conference Room C, 16th Floor of the Municipal Service Building, Phila., PA

SUBJECT: "Amtrak High Speed Rail Project"

SPEAKER: **Mr. Dave Warner**, Senior Test Engineer, Corporate Equipment Engineering and Mechanical Department of the National Railroad Passenger Corporation (AMTRAK)

PRICE: \$10.00; students half price

Mr. Warner will present an overview of Amtrak's New Haven to Boston High Speed Rail Project discussing many of the infrastructure upgrades and will also give a brief overview of the new passenger equipment being utilized on the Washington to Boston Corridor.

A buffet lunch will be served at 12:00 noon with the presentation at 12:30 p.m. **Reservations are required. Seating is limited to 50.** Please contact either **Chris Rood, P.E.**, Transportation Group Chairman at (215) 580-7586 or **Steve Buckley**, Younger Member Forum Contact at (215) 790-2310 for reservations and questions.

**RESOLVE TO ATTEND ALL
MONTHLY SECTION MEETINGS
AND FUNCTIONS...
AND INVITE YOUR CLIENTS,
ASSOCIATES AND COLLEAGUES
TO COME ALONG WITH YOU!**

PHILA. SECTION, ASCE OFFICERS 1998-1999

PRESIDENT

Sandra J. May

PRESIDENT-ELECT

Faruq Siddiqui

VICE PRESIDENT

Thomas J. Branigan

SECRETARY

Sean W. Markey

TREASURER

Jian Jin

ASSISTANT TREASURER

David C. Hanly

MEMBERSHIP SECRETARY

Allan F. Moore, Jr.

DIRECTORS

Susan K. Lior

Chris L. Rood

Philip Udo-Inyang

Yael Heller Jekogian

Gregory R. Yates

Ruben David

Jeffrey Lepard, President, Reading Branch

PAST PRESIDENTS

William G. Richards

Alvin Zion

Darin Gatti

President - Sandra J. May

PECO Energy Co.

680 Ridge Pike

Plymouth Meeting, PA 19461

(610) 941-1703; fax (610) 941-1673

Email: smay@peco-energy.com

Secretary - Sean W. Markey

Frederic R. Harris, Inc.

260 S. Broad St., Suite 1500

Philadelphia, PA 19102

(215) 735-0832; fax (215) 735-0883

PUBLICATIONS COMMITTEE

Chairman and Editor of THE NEWS

Sidney Robin

Staff Writers

Wm. G. Richards Joe Syrnick Bob Wright

SEND COPY TO:

Sidney Robin

64 Nancy Drive

Richboro, PA 18954

(215) 322-7464

**COPY DEADLINE FOR
FEBRUARY 1999 ISSUE
JANUARY, 13, 1999**

YOUNGER MEMBER FORUM NEWS

by Christopher Menna, Forum Editor

The Younger Member Forum (YMF) current membership includes college students, recent graduates, and young Registered Professional Engineers who are 35 years of age and under. The objectives of this group are: 1) To provide networking opportunities, 2) To interact with schools and the general public to promote Civil Engineering, and 3) To enhance career development.

Young engineers or college students who would like to become part of the YMF please contact **Carol Martsof**, Parsons Brinkerhoff at (215) 790-2319.

December Events

The YMF hosted its Second Annual Winter Social on **Thursday, December 17, 1998** at 6 PM at Bistro St. Tropez. The restaurant is located on the fourth floor of the 2400 Market Street Building in Center City. This well attended event was an excellent opportunity to mingle and network with YMF members, Section members, and Section Board members. YMF members and college students attended.

Past Accomplishments

On **November 7, 1998**, the YMF took part in a very successful trailwork day in the Wissahickon Park in Northwest Philadelphia. The event was sponsored by the Friends of the Wissahickon (F.O.W.) and Fairmount Park. The actual worksite is near the Pachella Field Park Entrance along Henry Avenue, just below Saul High School. Volunteers helped to plant thirty young trees next to a trail. After the planting was completed, a protective deer fence was installed around the worksite. Members also gathered and helped to remove a small dumping site. The YMF worked alongside The Sierra Club and some boy scouts. In addition, a F.O.W. reporter was there. Our efforts will be published in their next newspaper and in *The Roxborough Review*.

Member Spotlight

The purpose of the member spotlight is to introduce a fellow YMF member to the Delaware Valley Engineering Community.

Michael J. McAtee, E.I.T., is a Project Engineer employed by Urban Engineers, Inc. in Olde City Philadelphia. He is currently involved in several bridge-related projects, including the rehabilitation of SEPTA's mainline commuter rail infrastructure between 30th Street Station and Suburban Station. In addition to performing structural design, Mike specializes in three dimensional modeling and visualization. Mike also recently attended the 1998 ASCE Annual Convention in Boston where he presented a technical paper entitled "Three Dimensional CADD for Consulting Civil Engineers." This paper was published in a recent issue of The International Computing Congress Journal. Mike is currently attending Villanova University's Graduate Civil Engineering Program, where he is focusing on structures. He is an active YMF member and he hopes to speak at some high school career days in the future.

January News - Upcoming Events

The 1999 Northeast Regional Younger Member Council (NERYMC) will take place on **February 26-28, 1999** in Providence, RI. The NERYMC Conference provides Younger Members from each Zone I Section and Branch with the opportunity to meet and exchange ideas as well as discuss issues that are close to the hearts of young engineers and ASCE as a whole. Scheduling NERYMC in conjunction with the Zone I Management and Leadership Conference (ZMLC) enables Younger Members to have a direct voice to the ASCE National leaders and interact with those who are making the decisions about ASCE's future. Our YMF will be sending a group to this conference. Interested YMF members should contact **John Zarsky**, President of YMF, Parsons Brinkerhoff at (215) 790-2309 for more information.

Past Accomplishments

On **December 16, 1998**, a few YMF members participated in an Engineering Day at the Lamberton Middle School in the Overbrook section of Philadelphia. This event was part of a program called The International Schools Exchange Project. Emphasis was placed on the importance of math and science, and what engineers do. A special thanks to **Yael Heller Jekogian**, Phila. Section Director, for helping to coordinate the participating volunteers.

The YMF held its Second Annual Winter Social on **Thursday, December 17, 1998**, at Bistro St. Tropez. This well attended event was an excellent opportunity to mingle and network with YMF members, Section members, and Section Board members. The highlight of this gathering was a drawing for door prizes. To get a raffle ticket, YMF members either bought them or donated clothing. All proceeds were given to The Street Clothes Project, a local charity organization. **Ms. Barbara Pitman**, Program Coordinator for this charity, was on hand to answer questions and to fill out donation forms. Special thanks goes to **Carol Martsof** for the planning of the Social, **Barbara Pitman** for providing the door prizes, and to all others who gave a monetary or clothing donation.

Member Spotlight

Christopher W. Wright, P.E., is a Project Engineer employed by Black & Veatch Special Projects Corporation in Olde City. His background includes Remedial Design, Construction Oversight and Inspection, and Construction Quality Control Assurance (CQA) on a variety of engineering and environmental remediation projects. Currently, Chris is Project Manager on a Remedial Design/Remedial Action (RD/RA) oversight project. Work involves the use of soil vapor extraction to treat VOC contaminated soils, and construction of subsurface reactive wells to treat VOC contaminated groundwater. In addition, Chris is doing engineering work on several ongoing municipal landfill-capping projects. Further, Chris was recently accepted for the Winter 1999 term at Drexel University to pursue a MSCE degree. Chris has become very active in the YMF and is a regular participant at our trailwork volunteer days.

DECEASED MEMBER MEMOIRS

With 1998 quickly coming to a close, we will soon start production on the new edition of the Transactions of the American Society of Civil Engineers. Since memoirs of deceased members are published in the Transactions, you may wish to remember a recently deceased member of the Section by including a memoir in this upcoming edition. If you have a memoir you wish to be published, please send two copies to Carol Reese, Manager, Information Products at American Society of Civil Engineers, Information Products, 1801 Alexander Bell Drive, Reston, VA 20191-4400. One copy will be sent to the Linda Hall Library to be added to its collection while the other copy will be edited for inclusion in Transactions.

The following information should be included in each memoir: 1) full name of the deceased; 2) father's given name; 3) mother's given and maiden name; 4) deceased's date of birth; 5) educational background; 6) professional information; 7) extracurricular activities; 8) marital information; 9) names of survivors; 10) dates and grades of Society membership.

Please send in your memoirs as soon as possible. If you have any questions, please contact **Ms. Reese** at (703) 295-6240 or 1-800-548-2723 ext. 6240.

ACI ANNUAL AWARDS COMPETITION

The Delaware valley Chapter of the American Concrete Institute (ACI) is pleased to announce its **8th Annual Awards Competition**. The purpose of the competition is to recognize outstanding concrete projects. Submittal projects must be completed between **January 1, 1993 and December 31, 1998**. Projects located in the Chapter Counties of Philadelphia, Montgomery, Bucks, Delaware, Chester, Berks, Lehigh, Lebanon, Dauphin, and Northampton in the Commonwealth of Pennsylvania, or in the State of Delaware, are eligible for the Competition.

For further information and submittal forms, please contact: **Ken Balch**, CVM Engineers, (610) 989-3800.

*The present is the
ever moving shadow
that divides yesterday
from tomorrow.*

— Frank Lloyd Wright

WANTED

TUTOR FOR P.E. EXAM - CIVIL
PHILADELPHIA AREA
PLEASE CALL MARC KESSLER
(215) 752-9593

NOVEMBER JOINT DINNER MEETING

November 12, 1998

Williamson's City Line, Phila., PA

Recent Federal Transportation Legislation

By Bill Richards, Staff Writer

The second regular monthly Dinner Meeting of the Phila. Section ASCE's 1998-99 season provided a continuation of the two themes of the impact of recent transportation funding and of featuring an excellent slate of female speakers. A large crowd assembled at Williamson's Restaurant for the Joint Meeting with the Phila. Section of the Society of Women Engineers and the Phila. Chapter of the Women's Transportation Seminar. The meeting was ably hosted by our Section President, **Sandra J. May**, who also had the honor and pleasure to announce the election of past Phila. Section President, **Larry Moy**, as the 1999 Delaware Valley Engineer of the Year.

The meeting featured a panel discussion of the impact of recent transportation legislation, represented primarily by the significant increase in funding resulting from the Transportation Equity Act for the 21st Century (TEA-21) on the Greater Philadelphia Region. Our three highly interesting speakers were **Denise L. Goren**, Deputy Mayor for the Transportation for the City of Phila., **Karen L. Martynick**, Vice Chairman of the Chester County Board of Commissioners, and **Happy Fernandez**, Candidate for the Mayor of Philadelphia and a former City Councilwoman.

Villanova Night

The meeting honored the ASCE Student Chapter, alumni and faculty of the Civil Engineering and Environmental Engineering Department of Villanova University. President May called upon Faculty Advisor **Frank E. Falcone, P.E.**, Director of Villanova University College of Engineering Institute for Environmental/Engineering Research, to describe Villanova's program and to introduce the Chapter's officers: President, **Richard Tamagno**; Vice President, **Aaron Capone**; Secretary, **Jackie Paone**; Treasurer, **A.J. Fritsch**; Social Chair, **Amy Poplowski**; EJC Representative, **Carolyn Clancy**. The Student Chapter has about 55 members and holds monthly meetings which usually include a technical presentation by invited guests. They will be participating in both the coming Spring Concrete Canoe Race and Steel Bridge Competitions. Mr. Falcone described the University's new engineering laboratory, the Center of Engineering and Education Research, and the Institute for Environmental Engineering Research. Mr. Falcone then asked President **Rich Tamagno** to address the audience. Rick described two tours that the Student Chapter conducted; one last Spring to the Delran, NJ Water Treatment Plant, and the other this Fall to the Penn Forest Reservoir Dam, which provides drinking water to Bethlehem, PA.

Panel Discussion

President May called upon Past Section President **Robert Wright** to introduce the three panelists. The first presenter was Chester County Board of Commissioners Vice Chairman **Karen**

Martynick. She has been a Commissioner since 1991, has served as Chair of the County Board of Commissioners in 1993 and from 1995-97 and is presently Vice-Chair. During this period she has been active in the development of the County's strategic plan for economic development and concentrated on the challenges faced by a rapidly growing county in the areas of land use, growth management and environmental protection. Ms. Martynick has also represented Chester County for six years on the Board of Directors of SEPTA.

Chester County Objectives

Ms. Martynick described the growth of Chester County and the myriad of problems and challenges that accompany such growth. She described Chester as having the wealthiest and most-educated constituents of any county in Pennsylvania. She described the transportation management plan that is included in the County's Comprehensive Land Use Plan. The County will not build highways to alleviate all traffic congestion but will also seek public transportation projects. Among these are the Schuylkill Valley Metro, the Cross County Metro and improvements to the Paoli Transportation Center. The County is also looking to work in cooperation with the private sector and with Philadelphia and the other suburban counties.

Ms. Goren and Phila. Transportation

Next to speak was **Denise Goren**, Philadelphia's Deputy Mayor for Transportation. She has been involved in the City's transportation policy for the last 14 years in this capacity and previously with the Managing Director's office. She provides liaison on policy issues with SEPTA, PaDOT, DRPA, and Federal agencies. Her efforts in this area were recognized by the Phila. Section, ASCE, in 1992 when she was the recipient of our Government Service Award.

Ms. Goren pointed out that TEA-21 provides about 50% more funds annually than ISTEA did for the region. While the money is positive, she posed the question as to whether we have the correct vision on how to spend it. In her mind, a list of projects is not a vision. To her, quality of life is the issue and transportation projects are part of the solution. She raised four challenges that she hopes the transportation funding can help to resolve:

- 1) Welfare Room - How can TEA-21 help in providing access to work for the multitude of people coming off welfare rolls in March 1999?
- 2) Philadelphia as a tourist and convention destination - Can money be spent to help in achieving this goal?
- 3) Environmental Issues - TEA-21 should help to alleviate congestion which impairs air quality.
- 4) Brownfields - Help impaired neighborhoods and areas that were formerly manufacturing but are now blighted.

Candidate Fernandez Speaks

Until recently, Dr. Fernandez was a Councilwoman-at-Large and is presently a candidate for Mayor. In Council she served on the Committee of Transportation and Public utilities, and Commerce and Economic Development, among others. She has also been a Commissioner for Philadelphia Gas Works and a respected educator at Temple University. Dr. Fernandez is currently a Board Member of the Pennsylvania Academy of Fine Arts, Phila. Cultural Fund and the Education Law Center; a member of the Forum of Executive Women and the Women's Transportation Seminar.

Dr. Fernandez began by relating how improvements to the streets and highways were a part of the improvement in quality of life that has been occurring in the City. Newly paved streets and well-marked bikeways and crossing signs are little things that send a very positive message about what the City is doing. She reviewed the process that led to passage of TEA-21 and praised Congressmen Bud Shuster and Robert Borski for leading the effort to get Pennsylvania and this region a fair share of the funding. She emphasized that the key to using the transportation funds wisely is to always take a regional approach and for all the concerned politicians, City and suburbs, to work together. Dr. Fernandez raised three important keys coming out of the legislation:

- 1) SEPTA must be required to be part of all transportation planning organizations, such as the Delaware Valley Regional Planning Commission.
- 2) New provisions exist for transit enhancement. She would like to see all regional rail stations improved under a public-private initiative.
- 3) Continue the intermodal approach of the former ISTEA legislation.

Questions and Answer Period

A series of pertinent questions followed which the panelists answered with insight and vision. Topics included elaboration on the themes of political cooperation and use of funding for quality of life issues; intelligent transportation systems, and the positive and negative aspects of environmental requirements on transportation projects. President May thanked the panelists for their participation and a very enlightening evening.

GOLFER'S NOTE

Editor's Note: Phila. Section, ASCE members, upon reading the following piece of sage writing will immediately recognize that it was authored and submitted by THE NEWS staff writer Joe Szymick!!

Section member **Joseph P. McAtee** has been granted Patent No. 5,776,009 for a momentum-generating golf club designed to increase clubhead speed resulting in greater distance. Joe is contemplating developing a prototype for testing and marketing and is seeking an eminent golfer to sponsor his product. Any Section member currently playing on the PGA Tour interested in helping Joe out should contact him at **Urban Engineers, Inc.**, at (215) 922-8080.

PHILA. SECTION AWARDS PROGRAM - NOMINATIONS NOW OPEN

Our Annual Section Award program is now open for nominations. These Awards recognize Section members and others for their contributions to the Civil Engineering Profession. All Awards will be presented at the Spring Social/Dinner Dance which will be held on **Friday, May 7, 1999** at the Sugarloaf Center in Chestnut Hill. (More information on the Spring Social will be included in upcoming issues of THE NEWS.)

RULES

- Nominations must be postmarked by **Friday, February 5, 1999**.
 - Individuals may be nominated for awards by a member in any grade of membership.
 - Individuals may receive only one award in a single year, but may be nominated for more than one award in a single year.
 - Award recipients must be approved by the Section's Board of Directors.
 - All awards are presented only in years in which, in the judgment of the Selection Committee or the Board, there is at least one suitable candidate.
 - The Selection Committee may be required to nominate an alternate for Board consideration for each award.
- The Selection Committee will also recommend to the Board whether the recipient should be nominated for applicable National or Regional awards by the Section.
- A nominee for any award **MUST** be a member in good standing of the Phila. Section in the year in which the nomination is made in all but two instances. For the Government Service Award and the Philadelphia History and Heritage Award, nominees need **NOT** be members of the Phila. Section.

AWARDS

Phila. Civil Engineer of the Year
 Phila. Young Civil Engineer of the Year
 Phila. Government Engineer of the Year
 Phila. Young Government Engineer of the Year
 Government Service Award
 Educator of the Year
 Phila. History and Heritage Award
 Individual Technical Awards:
 Civil Engineering Manager of the Year
 Construction Engineer of the Year
 Geotechnical Engineer of the Year
 Structural Engineer of the Year
 Transportation Engineer of the Year
 Water Resources Engineer of the Year

If you are interested in submitting a nomination for consideration, please contact **Bob Wright**, Awards Chairman at **(215) 686-5538** to obtain a nomination form. You should also contact Bob if you need any additional information on the Section Awards Program.



MOY ELECTED ENGINEER OF THE YEAR

Lawrence M. Moy, P.E., the Streets Commissioner for the City of Philadelphia, was elected to serve as the Delaware Valley Engineer of the Year for 1999. The election was conducted on November 4, 1998. Larry will be officially inducted into the position during Engineers Week, which will be celebrated from February 19 through 28, 1999.

Larry started employment with the City's Department of Streets in 1956 as a Graduate Engineer in the Bridge Section. He advanced through several positions with the Department, and in 1993 was appointed Streets Commissioner by Mayor Rendell. As Streets Commissioner, Larry is charged with all highway construction, construction management, maintenance, design, surveying, traffic engineering, street lighting, sanitation and solid waste disposal activities for the City. His responsibilities include a network of 2034 miles of roadways, 312 bridges, and a workforce of over 2500, with an annual capital budget of \$210 million and an operating budget of \$160 million.

Larry's contributions to the local engineering profession and the citizens of the Phila. Region are many and varied. His professional staff includes an engineering component of nearly 100 individuals, supplemented by a surveying staff of nearly 120. He has been at the forefront in the area of professional development of Department personnel at all levels. One result of this effort was the Department's receipt of the Pennsylvania Society of Professional Engineers Professional Development Award in 1993. This highlighted the Department's establishment and promotion of employee professional development in the engineering fields.

Larry had advanced the total quality initiative through the Department in his efforts to enhance the delivery of the Department's services to its customers, the general public. While much of this has been driven by the limited resources available to the Department and the need to "do more with less," he has found many creative ways to accomplish this within the often restrictive constraints of the governmental process. This creativity has helped Larry gain recognition as one of the nation's Top Ten Public Works Leaders of the Year for 1998, an honor granted to him by the American Public Works Association.

Larry's seemingly tireless efforts have raised the level of recognition of the Department of Streets and has consequently instilled in his employees the gratification and satisfaction of jobs well done.

Larry is an active member of the Phila. Sec-

GEOSYNTHETICS SEMINAR

The Phila. Section and Pennoni Associates, Inc., have teamed to co-sponsor a one-day Seminar on the topic "*Geosynthetics in Transportation Facilities Design, Testing and Construction*," to be conducted at Drexel University on **Tuesday, March 23, 1999**.

The Seminar will be conducted by the staff of the Geosynthetic Research Institute under the moderation of **Robert M. Koerner, Ph.D.**, the H.L. Bowman Professor of Civil Engineering at Drexel University, and Director of the Institute. Bob, a very active member of the Phila. Section (Past President, 1975-76), is an Honorary Member of ASCE and is a past Delaware Valley Engineer of the Year. Bob has offered his services and talents to the Section for this event, as he has done several times in the past. The event represents a unique opportunity to obtain the latest information on geosynthetics from an internationally-recognized expert of Bob's caliber.

The course content will focus on the proper design, testing and construction of geosynthetics used in transportation facilities, such as paved highways, unpaved roads, railroads, retaining walls, steep slope and embankment stabilization, and similar applications. The target audience is Transportation Engineers at all levels of government, Consultants, Land Developers, Testing Laboratories, Material Manufacturers and Suppliers, Academics, and others who may desire information on this important aspect of Transportation Engineering systems.

More details will be included in the next issue of THE NEWS. For now, please mark your calendars and set aside the date for an interesting and insightful Seminar. While it is planned as a single day event, it will last the entire day, so you should plan accordingly.

tion and has held various offices and Committee appointments in the Section over the past 35 years, including Section President in 1971-72. He also chaired the Humphrey Fund Committee for many years. Additionally, he is an active participant in the Delaware Valley Chapter of the American Public Works Association. Larry exemplifies the concept of "citizen engineer" fostered by the American Society of Civil Engineers, with his extensive involvement in community and family, in addition to his career accomplishments. He and his wife, Irene, have raised four children and their extended family includes five grandchildren.

Larry is a graduate of St. Joseph's Preparatory High School and Villanova University, where he received his Bachelor of Engineering in Civil Engineering in 1956. He is a Registered Professional Engineer in Pennsylvania.

In addition to the APWA Top Ten recognition, Larry has received several other awards, including the Section's Phila. Civil Engineer of the Year honors in 1994. He was nominated for Delaware Valley Engineer of the Year recognition by the Phila. Section, ASCE.

The Phila. Section congratulates Larry Moy, the 1999 Delaware Valley Engineer of the Year.

JOIN THE SECTION'S TECHNICAL GROUPS

Younger Member Forum

John Zarsky, P.E., President

Parsons Brinckerhoff Quade & Douglas, Inc.
1528 Walnut St., 4th Fl.
Philadelphia, PA 19102
(215) 790-2309

Construction

Brian Stover, P.E., Chairman

Urban Engineers, Inc.
530 Walnut St., 16th Fl.
Philadelphia, PA 19106
(215) 923-5077

Structural

Richard Roberts, P.E., Chairman

Pennoni Associates, Inc.
3001 Market St.
Phila., PA 19104
(215) 222-3000

Transportation

Chris Rood, P.E., Chairman

SEPTA - Eng'g & Construction Div.
1234 Market St., 12th Fl.
Philadelphia, PA 19107
(215) 580-7586

Engineering Management

Dennis MacBride, P.E., Chairman

SEPTA - Eng'g & Construction Div.
1234 Market St., 12th Fl.
Phila., PA 19107
(215) 580-7084

Environmental-Geotechnical

Dr. Joseph P. Martin, Chairman

Drexel University
Civil & Architectural Engineering Dept.
32nd & Chestnut Sts.
Philadelphia, PA 19104
(215) 895-2363

Adam Hockenberry, Asst. Chairman

Drexel University
Civil & Architectural Engineering Dept.
32nd & Chestnut Sts.
Philadelphia, PA 19104
(215) 895-1633

HAZEN & SAWYER NEW OFFICE

Hazen and Sawyer, P.C., celebrated the opening of their new Philadelphia Center City office with a reception and ribbon cutting ceremony on **Monday, December 14, 1998**. The office location is 1128 Walnut Street, Phila., PA 19107. Phone: (215) 592-0600; Fax: (215) 662-0690.

Mayoral candidate, **Happy Fernandez**, was on hand to assist company officials with the ceremony and to welcome the company to the Philadelphia area. State Senator, **Hank Salvatore**, and the newly elected 1999 Delaware Valley Engineer of the Year, **Lawrence M. Moy, P.E.**, were also in attendance, as well as personnel from the Philadelphia Water, Streets and Capital Programs Departments.

Hazen and Sawyer, P.C., is an employee-owned professional corporation providing Environmental Engineering and Consulting services in the specialized fields of wastewater collection, treatment, and disposal; water supply, treatment,

Hazen & Sawyer

Continued

and distribution; and solid waste management. The new office will focus on water and wastewater consulting, as well as development of new business with municipal governments and regional authorities in the Delaware Valley.

Phila. Section, ASCE Past President (1995-96), **William G. Richards** is Senior Associate with the firm, serving in the Phila. office.

CENTRAL PA SECTION MEETING FEATURES DELON HAMPTON

Phila. Section, ASCE officials and members are cordially invited to attend the Central PA Section, ASCE January 1999 Dinner Meeting. Featured speaker is **Delon Hampton, P.E.**, National ASCE new President-Elect.

Delon will appraise us of the current and future paths that ASCE will be taking as it steps into the 21st Century. As President-Elect, it is one of Delon's duty to serve as a sounding board for comments and suggestions which come from the grass roots level. That is us. Let's use this opportunity to have our voices heard.

The dinner meeting begins with a social hour at 6:00 pm on **Thursday, January 28, 1999**. The meeting will be held at the Days inn Conference Center located at the intersection I-83 and Route 30, 222 Arsenal Road, York, PA. The conference center phone number is (717) 843-9971. To reserve your seat at dinner, please call **Jeane Newman** at (717) 975-6481. The dinner cost is \$15.00 for selections of chicken cordon blue or broiled flounder stuffed with crabmeat.

Contact **Cari Beenenga**, President, Central PA Section, ASCE, at Gannett Fleming, PO Box 67100, Harrisburg, PA 17106, phone (717) 763-7211, ext. 2698; fax (717) 763-8150, e-mail: cbeenenga@gfnet.com.

Schnabel Engineering

Geotechnical
Environmental
Geosciences
Water Resources

Visit us at

<http://www.schnabel-eng.com>

or call (610) 696-6066, West Chester, PA
Offices throughout the U.S.

Villanova University

Department of Civil & Environmental Engineering

Tolentine Hall - 800 Lancaster Ave.
Villanova, PA 19085-1681
(610) 519-4960 • Fax (610) 519-6754



EVENING GRADUATE PROGRAM

- Structural and Geotechnical
- Transportation
- Water Resources & Environmental

www.vill.edu/~engine/cee/grad.htm

EMPLOYMENT OPPORTUNITIES WITH GANNETT FLEMING

Several positions available including Geotechnical Engineer, Environmental Engineer and Municipal Engineer.

For full information on qualifications and job requirements, contact Gannett Fleming, Inc., Human Resources Dept. Manager SKF/MJB, 650 Park Ave., Suite 100, PO Box 63068, King of Prussia, PA 19406, fax: (610) 265-8865. EEO

POSITION AVAILABLE

The Ratsep Group, Inc. is seeking a Civil Engineer with experience in hydrology design and modeling, GIS/GPS, and site development design. Detail orientated with strong computer skills in surface water modeling, CAD, and GIS software. A minimum of 2 years experience required, MS degree preferred. Send resume to: The Ratsep Group, Inc., 4 Chester County Commons, Malvern, PA 19355. Email: ratsepgp@voicenet.com

Solutions to Liquid Flow Problems

Analyses and Computer Simulations for Engineers

- Waterhammer • Surges • Transmission Pipelines
- Distribution Networks • Cooling Water Systems
- Storm Sewers • Rivers • Open Channels
- Mixed Pressurized - Open Channel Flow
- Dam Break Simulation • Specialized Modeling

JOEL L. CAVES, Ph.D., P.E.

Consulting Hydraulic Engineer

2 Tanager Drive, Reading, PA 19610 Tel./Fax 610-478-9992

THE RATSEP GROUP, INC.

ENVIRONMENTAL SCIENCE & CIVIL ENGINEERING

4 CHESTER COUNTY COMMONS
MALVERN, PA 19355
(610) 695-8900
FAX: (610) 647-1950
ratsepgp@voicenet.com

LINDA A. RATSEP, P.E., Principal
Civil/Environmental Engineer



GeoSystems Consultants

*Engineering, Earth Sciences and
Geotechnical Laboratory Testing*

514 Pennsylvania Avenue Telephone: 215-654-9600
Fort Washington, PA 19034 Fax: 215-643-9440



TEMPLE UNIVERSITY

A Commonwealth University
College of Engineering
Civil Engineering Department

Dr. Frederick C. Schmitt, P.E.

1947 N. 12th Street
Philadelphia, PA 19122
(215) 204-7724 Fax: (215) 204-6936