

the news



Address Service Requested
FIRST CLASS MAIL

First Class
Postage Paid
Permit No: 130
Concordville
PA 19331

PHILADELPHIA SECTION
AMERICAN SOCIETY OF CIVIL ENGINEERS

P. O. Box 58186, Philadelphia, PA 19102-8186
Electronic Message Hotline: 1-800-461-4190 (24 hours a day)
Web site: <http://www.asce-philly.org>
National ASCE Central Number 1-800-548-ASCE • Toll Free

Vol. 74-4

Our 88th Year

November, 2001

PLEASE NOTE NEW ELECTRONIC MESSAGE HOTLINE ABOVE

NOVEMBER DINNER MEETING

Philadelphia Section, American Society of Civil Engineers

THURSDAY, NOVEMBER 15, 2001

WILLIAMSON'S • GSB Building • City Line Avenue • Philadelphia, PA • See Location Map Below
Cocktails - 5:30 p.m. • Dinner - 6:30 p.m. • Meeting - 7:30 p.m.

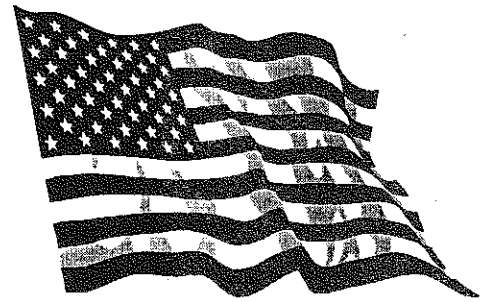
SUBJECT: SEPTA's Market Street Reconstruction Project

SPEAKERS: Dominic F. Sabatini, Director of SEPTA's BlueLine Structures Engineering and Construction Division and John F. Tepper, Deputy Director, SEPTA's BlueLine Structures Engineering and Construction Division

SPECIAL FEATURE: ASCE FELLOW NIGHT. The Philadelphia Section will honor our new Fellows at this meeting.

SPECIAL FEATURE: VILLANOVA UNIVERSITY NIGHT. The ASCE Student Chapter, Alumni and Faculty of the Civil and Environmental Engineering Department of Villanova University will be honored at this meeting. All Students, Faculty and Alumni are cordially invited.

RESERVATIONS MUST BE SUBMITTED BY MONDAY, NOVEMBER 12, 2001. Please send your check for the number of attendees @ \$25.00 per member or guest, \$10.00 per ASCE Student Members, payable to the Phila. Section, ASCE, P.O. Box 58186, Phila., PA 19102-8186; or call the Electronic Message Center: 1-800-461-4190 (Open 24 hours/day) or e-mail the Section at info@asce-philly.org.



God Bless America!

TECHNICAL GROUP ACTIVITIES

Transportation Group

November Luncheon Meeting

DATE: Tuesday, November 20, 2001

TIME: 12 Noon

COST: \$10.00; Students \$5.00

LOCATION: Conference Room E on the 16th Floor of the Municipal Services Building, 15th & JFK Blvd., Philadelphia, PA

SUBJECT: SEPTA's Girard Avenue Light Rail Improvements Project

SPEAKER: Mr. Rusty Acchione, Senior Project Manager, SEPTA Capital Design and Construction Division

SEPTA is proceeding with this Capital Project that calls for the design and construction of infrastructure improvements for the Girard Avenue Light Rail (SEPTA Route 15). This line runs a distance of approximately 9 miles from 63rd and Girard to Richmond and Westmoreland. Improvements include substations, feeders, cables, overhead and track and the modernization of Callowhill Maintenance Facility. Mr. Acchione will discuss the project, the status to date, and the next step.

A buffet lunch will be served starting at noon with the presentation beginning at 12:30 pm.

Reservations are required. Seating is limited to 50. Please contact either **Chris L. Rood**, Transportation Group Chairman at (856) 461-9565, ext. 102 or **John Quirus**, Younger Member Forum at (215) 790-2311 if you have any questions and for reservations.

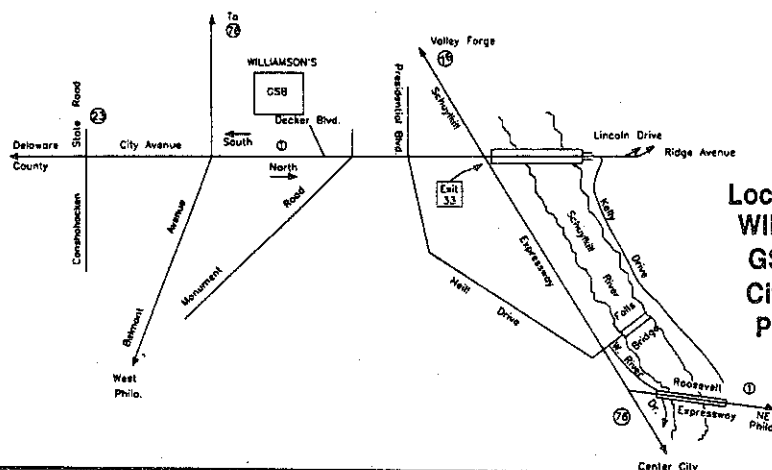


Dominic F. Sabatini

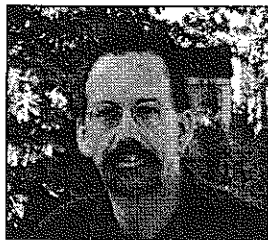


John F. Tepper

The Southeastern Pennsylvania Transportation Authority (SEPTA) is currently reconstructing the Market Street Elevated portion of the BlueLine (also known as the Market-Frankford Subway & Elevated.) The \$420 million project includes reconstruction of six
(Continued on Page 2)



**Location Map for
WILLIAMSON'S
GSB Building
City Line Ave.
Philadelphia**



THE PRESIDENT'S MESSAGE

Greetings and welcome to the Section's November issue of THE NEWS. Oh, the wonderful days of autumn! The time of year which has become my favorite. Cooler weather, football and Fall colors. This Fall, however, has been traumatically different. The normal Fall colors have been outdone by the display of Our Country's colors – Red, White and Blue. These colors have become the prominent colors of the Fall this year. No complaints. The surge of Patriotism is indeed remarkable. The number of people displaying our Country's flag is overwhelming and indeed a

pleasure to see. It is, however, very unfortunate that this surge is a result of the tragic events of September 11, 2001 and not the norm. As our Section tries to continue with our normal operations our thoughts and prayers continue to be with the families and friends of the victims involved in the horrific events of September 11th.

Our 2001-2002 season got off to a great start considering both the terrorists' attacks and the ongoing war against it. Our first Dinner Meeting held on October 24th was a great success. We were very fortunate to get the ASCE National President-Elect, **Thomas L. Jackson** within his first two weeks in this capacity to be our featured speaker. Those who missed the opportunity to attend truly missed an inspiring speech on "Enhancing the Standards of Professionalism for the Civil Engineer." Special thanks goes to our Younger Member Forum President, **Christopher Wright** for arranging such a wonderful meeting. Our November Dinner Meeting should be just as interesting and rewarding. I look forward to meeting more Section members at that meeting.

Also in October, at the 2002 National Convention in Houston, **Maria C. Lehman** from the Erie County, New York area and **John "Fred" Graham** from the Pittsburgh Section were sworn in as the Zone I Vice President and District 4 Director respectively. These individuals replace **David Mongan** and our own **Joseph Syrnick** respectively. We thank both Dave and Joe for doing such a superb job for our Section in their respective roles and wish both of them well. We welcome both Maria and Fred into their new roles and look forward to having them at one of our future meetings. Additionally, October brought the 4-year term of our own **Allen Cadden** as Zone I Representative for the Committee on Younger Members to an end. Allen did an excellent job in that role and Staff Members at National could not but give him lots of praise for a job well done. Thanks Allen for representing our Section so well.

Our activities for the remaining 2001-2002 season have been pretty much finalized and are shown on the last page of this issue. We have many interesting events remaining. Remember that this is YOUR Section, so vow to participate.

Until next time — be safe, healthy and prosperous. And don't forget to check out the Section's website at www.asce-philly.org. GOD BLESS AMERICA!

Sincerely yours,
Chris L. Rood, P.E.
President, Philadelphia Section, ASCE

Technical Group Activities

(Continued from Page 1)

Construction Group

...joins the Delaware Valley Section of the American Society of Highway Engineers (ASHE) for a presentation on the Kimmell Center Construction.

DATE: November 7, 2001

LOCATION: Holiday Inn – King Of Prussia, PA

PRICE: \$20.00

TIME: Cocktails: 6:00 PM • Dinner: 7:00 PM

Speaker: 8:00 PM

SPEAKER: George Shaeffer, PE, Project Director

TOPIC: Design and Construction of the Kimmel Center for the Performing Arts

SECTION WEB SITE!

As of this past Spring, our Section's web site has taken on a new look. Check us out at www.asce-philly.org. Make sure you bookmark this site to check our latest meetings, events, scholarship information, links and much more! Suggestions? Please contact our Electronic Message Hotline at 1-800-461-4190 (24 hours a day).

November Dinner Meeting

(Continued from Page 1)

stations, the elevated guideway, signals and track power.

Opened for service in 1907 by the Philadelphia Rapid Transit Company, the two-mile long Market Street El is a two-track heavy rail guideway simply supported atop structural steel bents. It operates above Market Street from 45th Street in West Philadelphia to Millbourne Station in Upper Darby, Delaware County.

Engineering and architectural design is complete and construction is underway. The work will be performed under five separate contracts. The construction contracts for the stations and elevated superstructure will be advertised in the near future.

Much of the demolition and reconstruction will occur at night and on weekends to avoid interruption of service on weekdays.

Dominic F. Sabatini has over 35 years' experience in the Engineering and Construction Industry. He has worked in a broad range of industries including Transportation, Power, Industrial and Environmental. Prior to his work at SEPTA he was employed by Stone & Webster's Cherry Hill, NJ, office as the Manager for the Environmental/

Infrastructure Division. In this capacity he was responsible for the marketing and execution of projects in the transportation area (highways, bridges, rail), environmental investigations and remediation, chemical demilitarization – government facilities, and program management oversight. Also, this function included the management of design-build projects.

(Continued on Page 3)

PHILA. SECTION, ASCE OFFICERS 2001-2002

PRESIDENT
Chris L. Rood

PRESIDENT-ELECT
Ruben D. David

VICE PRESIDENT
Allan F. Moore, Jr.

SECRETARY
John W. Stone

TREASURER
David C. Hanly

ASSISTANT SECRETARY
Christopher Menna

MEMBERSHIP SECRETARY
Robert M. Brooks

ASSISTANT TREASURER
Mark Washington

DIRECTORS

John F. Davis Walter J. DeLury, Jr.
Carol Martsof William Mulloy
John Zarsky Sheldon A. Kinbar
Gerald Donnelly, President, Reading Branch

PAST PRESIDENTS

Sandra J. May
Faruq M.A. Siddiqui
Thomas J. Branigan

President - Chris L. Rood
DMJM+HARRIS
126 Franklin Street
Riverside, NJ 08075
(856) 461-9565

Secretary - John W. Stone
Deloitte and Touche,
Construction Consulting Services
1700 Market Street, 22nd Floor
Philadelphia, PA 19103-3984
(215) 299-4530; Fax (215) 405-3157
Email: jostone@deloitte.com

PUBLICATIONS COMMITTEE
Chairman and Editor of THE NEWS
Sidney Robin

Staff Writers
Joe Syrnick Bob Wright

SEND COPY TO:
Sidney Robin
64 Nancy Drive
Richboro, PA 18954
(215) 322-7464

**COPY DEADLINE FOR
DECEMBER 2001/JANUARY 2002 ISSUE
DECEMBER 8, 2001**

YOUNGER MEMBER FORUM NEWS

by Christopher Menna, Forum Editor and Past President

Younger Member Forum
Christopher Wright, President

DMJM+HARRIS
The Atlantic Building
260 S. Broad St., Suite 1500
Philadelphia, PA 19102
(215) 735-0832, ext. 293

The Younger Member Forum (YMF) current membership includes college students, recent graduates, and young engineers including registered Professional Engineers who are 35 years of age and under. The objectives of the group are: 1) To provide networking opportunities, 2) To interact with schools and the general public to promote civil engineering, and 3) To enhance career development

Young engineers or college students who would like to become part of the YMF please contact **Mike McAtee**, Urban Engineers, Inc. at mjmcaatee@urban-hq.com or at (215) 922-8080.

Past Accomplishments

On **September 20, 2001**, the YMF held a "kick-off" happy hour at the Irish Pub, located at 20th and Walnut Streets in Philadelphia. This was an exciting way to begin the year. Over 50 YMF members and friends attended this event, and enjoyed a few hours of networking, drink specials, free food, and good music. We would like to thank YMF President **Christopher Wright**, DMJM+HARRIS for handling all of the arrangements for this event. The YMF Board is currently planning more social events this year and hopes to see you there!

The YMF held its third annual bike ride on **Saturday, October 13, 2001**. This year several YMF members tackled about 18 miles of trails through scenic Pennypack Park in Philadelphia. The ride began the Pine Road parking lot, followed the creek to the Delaware River, and then returned back to Pine Road. The Fall colors were spectacular! Following the ride, participants enjoyed fresh soft pretzels and drinks. Special thanks go to **Christopher Menna**, Philadelphia Street Department for organizing this event.

For the second year in a row, the Section highlighted the YMF at their October monthly dinner meeting. This year, the meeting was held on **Wednesday, October 24, 2001**, at Williamson's GSB on City Line Avenue Arranged by the YMF, the featured speaker was **Tom Jackson**, Vice President of DMJM+HARRIS and President-Elect of ASCE National. Mr. Jackson presented an interactive discussion entitled "*Enhancing the Standards of Professionalism for the Civil Engineer.*" During the discussion, Mr. Jackson addressed such issues as licensure, the first professional degree, continuing education, and current ASCE programs for the enhancement of professionalism. It was a great opportunity to meet our future National President. Also at this meeting, YMF President **Christopher Wright** spoke on behalf of the YMF and briefly described some of the successful

events the YMF conducts each year and recognized the members of the YMF Board.

Upcoming Events

On **Saturday, November 17, 2001**, the YMF will conduct their annual Trail Works Day at Wissahickon Park in northwest Philadelphia. The YMF will help the Friends of the Wissahickon (FOW) clear out aggressive vines that are attacking saplings in the Roxborough area of the Park. We will also perform a trash pickup in the area. The YMF has been volunteering for the FOW over the past few years and each event has been a special way for the YMF to improve the environment. For those who enjoy the outdoors, this will be a great opportunity to do something rewarding and learn more about Wissahickon Park, one of Philadelphia's great treasures. If you would like to participate, please contact **Christopher Barber**, City of Wilmington Water Department at barbers_itch@yahoo.com. Look for the email announcing this event!

The YMF is planning the **Sixth Annual YMF Winter Social**. The Winter Social is the YMF's most popular and well-attended event of the year. This is a great opportunity to network, catch-up with friends, and to meet other YMF members. The event will be held in early December — more details to come. Please contact **Kristen Bowman**, Flowscience, Inc., (215) 361-6065, Winter Social Chair, to obtain additional information.

Several YMF members are planning to visit local Colleges and Universities throughout the year to hold open discussions with Civil Engineering Students. The YMF will respond to questions and concerns from the students at this informal gathering. The students will be informed of what to expect from the engineering world after graduation. If you would like to volunteer as a speaker, please contact **James Markham**, Pennoni Associates at (215) 222-3000 or **Christopher Wright** at (215) 735-0832.

Member Spotlight

The purpose of the member spotlight is to introduce a fellow YMF member to the Delaware Valley Engineering Community.

John Federico graduated in 1999 from Villanova University, where he earned a Bachelor of Civil Engineering degree, along with a business concentration. During college, John worked as an intern for Tredyffrin Township in Chester County, PA, reviewing land development plans and inspecting local construction. Currently, John is employed by Urban Engineers, Inc., in Old City, Philadelphia. At Urban, John uses his civil engineering background as a Project Engineer in the Bridge Department. His primary focus is designing bridges, culverts, and various other structures for Section 721 for SR 6202 in Bucks County, PA. John has applied his water resources knowledge in completing nearly a dozen hydrologic and hydraulic reports for various projects, including the Pennsylvania Turnpike Widening between Valley Forge and Norristown. Recently, he attended the International Bridge Conference in Pittsburgh, PA. John is currently living in the Roxborough section of Philadelphia, and his fa-

vorite hobbies are playing soccer and tennis. John is serving as the South Jersey liaison for the YMF.

November Dinner Meeting

(Continued from Page 2)

Currently, he functions as the Director of the BlueLine Structures Program for the Southeastern Pennsylvania Transportation Authority (SEPTA). This activity is an \$800 million capital program to rehabilitate the existing Market-Frankford Subway-Elevated. The system is 13.2 miles long consisting of a double track, electrified heavy rail transit line running from Northeast Philadelphia through Center City to the western Terminus at 69th Street in Delaware County. The eastern and western ends are elevated, while the center portion is in a subway. The BlueLine Structures Program includes replacement of wayside signals with a cab-based system, replacement of switch machines along the entire route, reconstruction of the 4 mile-long Market Street Elevated, replacement of five (5) additional stations and construction of the new Frankford Transportation Center (FTC).

John F. "Jack" Tepper, graduated from Temple University in 1980 with a BSCE. He went to work at United Engineers and Constructors in 1980 as a Structural Engineer in the Power Division. He continued his career at Unisys Corporation in 1984 as a Facilities Engineer and Project Manager at the company's headquarters in Blue Bell, Pennsylvania. He earned his License as a Professional Engineer in 1988. Jack joined SEPTA in 1989 as a Senior Project Engineer and advanced to his current position of Deputy Director, Blue Line Structures. His responsibilities at SEPTA started with managing SEPTA's Priority Bridge Program which involved the design and replacement of deteriorated Regional Railroad bridges; and, the first phase of SEPTA's Parking Improvement Program in which Regional Rail parking facilities were expanded and upgraded. He is currently overseeing the \$420M Market Street Elevated Reconstruction Program which provides for the replacement of the Market El and associated stations from 46th Street in Philadelphia to Millbourne Station in Delaware County. Jack currently lives in Warrington, PA with his wife Veronica. He is a member of the ASME and enjoys playing the piano in his spare time.

READING PHILLIES OUTING

The Phila. Section, ASCE combined forces with its Reading Branch on Sunday, August 26, 2001 to watch as the Reading Phillies hosted the Harrisburg Senators at Reading's GPU Stadium. This was our first joint Philadelphia Section/Reading Branch baseball outing, and was enjoyed by 18 members and guests. The weather was just wonderful, along with both the buffet lunch and all the participants. Everyone present had a great time. However, the Home team went down to the Senators by a score of 7 to 2. We look forward to our next outing that will occur during the next baseball season and hope to possibly get our group into the picnic grove or the pool deck area. We'll keep you posted.

SYRNICK COMPLETES TERM AS DISTRICT DIRECTOR

Joe Syrnick completed a successful term as ASCE's District 4 Director as of the National Convention last month. As many of you know, Joe, Chief Engineer and Surveyor of the City of Philadelphia Department of Streets, has been a fixture in the Phila. Section for many years. He has been involved in Section activities continuously for the past thirty-odd years and has served as Section President (1979-80) in addition to several other Section offices and Committee positions.

Joe has been honored as the Delaware Valley Engineer of the Year in 1997 and he remains active in the Delaware Valley Engineers Week Council, in addition to several other professional societies.

Joe and his wife, Mary Beth, live in Roxborough, where they have raised three adult daughters. Their youngest, Megan, a recipient of a Philadelphia Section scholarship, is currently following in Joe's footsteps in Civil Engineering. Unlike Joe, a Drexel University graduate, Megan is a senior at Catholic University.

Joe is a lifelong Philadelphian, having been born and raised in his beloved Manayunk ("back before it was THE place to be", as he likes to note). In his spare time, Joe can often be found at his local golf course, Walnut Lane, shagging balls and giving and getting pointers, or walking his two dogs (affectionately known as "the boys") around his neighborhood. With his successful term as District Director now behind him, he hopes to have more time to devote to golf, the "boys", and other pursuits.

The Section offers its collective thanks for a job well done to Joe and warmly welcomes his successor, John "Fred" Graham of the Pittsburgh Section, who was sworn in at the National Convention.

MENTORS NEEDED FOR REGIONAL FUTURE CITY COMPETITION

Submitted by Chris. L. Rood, P.E.

The Philadelphia Regional Future City Competition is in immediate need of engineer mentors. Mentors are needed to begin work with middle school teams. Please consider volunteering as a mentor for this fun and worthwhile experience.

The Delaware Valley Engineers Week Council (DVEWC) will present the 7th Annual Future City Competition in the Philadelphia area. The Future City Competition asks middle school students to create — first on computer and then in large, three-dimensional models — their visions of the city of tomorrow. The Philadelphia Regional Competition will be held in January 2002. The Future City Competition is a national program sponsored by the engineering community to promote technological literacy and engineering to middle school students. The Future City Competition in the Philadelphia Region includes school districts from the Delaware Valley. Students can experience a fun way to learn about engineering and cities of the future.

ACI ANNUAL AWARDS COMPETITION

The Delaware Valley Chapter of the American Concrete Institute is pleased to announce the 11th Annual Awards Competition. The purpose of the competition is to recognize excellence in the design and construction of concrete structures. Submittal projects had to be completed between January 1, 1996 and December 31, 2001. Projects located in the following Chapter counties were eligible for the competition: Berks, Bradford, Bucks, Carbon, Chester, Columbia, Dauphin, Delaware, Lackawanna, Lancaster, Lebanon, Lehigh, Luzerne, Monroe, Montgomery, Montour, Northampton, Northumberland, Philadelphia, Pike, Schuylkill, Sullivan, Susquehanna, Wayne, Wyoming, and York in the Commonwealth of Pennsylvania; and the state of Delaware.

This year's competition was a great success, honoring five Grand Prize Winners and 13 Finalists. The 2001 Grand Prize Winners are as follows:

Butz Residence, Lehigh County, PA
Architect: Roberson Butz, Allentown, PA
Precast Concrete Building Systems

Hyatt Regency Penn's Landing Hotel, Philadelphia, PA
Architect: Brennan Beer Gorman, New York, NY
Cast-in-Place Concrete Frame Construction

Federal Detention Center, Philadelphia, PA
Architect: Ewing Cole Cherry Brott, Philadelphia, PA
Architectural Concrete/Precast Cladding

The Font Hill Museum, Bucks County, PA
Architect: John Milner, Chadds Ford, PA
Concrete Restoration and Rehabilitation

University of Pennsylvania, Chemistry Building, Philadelphia, PA
Architect: Ballinger and Co., Philadelphia, PA
ACI Historic Award

We hope the competition will continue to promote appreciation for excellence in concrete design and construction within the industry and the public.

For further information and submittal forms, please contact **Ken Balch**, CVM Engineers at (610) 989-3800.

Through the program a student will:

- Work in a team of (3) students, under the guidance of a teacher and an engineer mentor.
- Use a popular award-winning computer game, SimCity 3000, to design their future city.
- Build a scale model of a section of their city.
- Utilize their communications skills by preparing an abstract, an essay and a verbal presentation relating their experience in the design of their city and some specific engineering features.

For more information on volunteering as an engineer mentor for the 2002 Future City Competition, please contact **John E. Kampmeyer**, P.E. at (610) 517-2445.

WIND AND SNOW PROVISIONS SEMINAR

Reserve Your Date Now!
November 15, 2001

The International Conference of Building Officials (ICBO) and the National Council of Structural Engineers Associations (NCSEA), in cooperation with S.K. Ghosh Associates Inc. (SKGA), will be presenting the Wind and Snow Load Provisions of the 2000 IBC (International Building Code) seminar in Philadelphia at the Hilton Garden Inn Philadelphia Center City on **Thursday, November 15, 2001**.

This one-day seminar covers the history of wind and snow provisions in the model codes. The design requirements are illustrated using examples, addressing both the simplified wind design procedure of the IBC and the analytical procedure in ASCE 7. Illustrative examples are worked out. This seminar is being presented by two of the following speakers, who have been directly involved in the development of the 2000 IBC: James M. Delahay, President, LaneBishop York Delahay Inc., S.K. Ghosh, S.K. Ghosh Associates, Inc., and Gerald Neville of ICBO Seminar Services.

The registration fee is \$235 for SEA/ICBO members and \$285 for nonmembers. In order to receive the SEA discount, please register by mail or fax. For more information and to register for these seminars, visit ICBO's website at www.icbo.org or call (800) 423-6587, ext. 3418, and on the NCSEA website www.ncsea.com.

CONSTRUCTION TECHNOLOGY DAY SEMINAR & EXPO

Not just a lecture, this is technology you'll be able to use immediately. Construction Technology Day is appropriate for all segments of the design/build industry. Sponsored by the Electronic Information Systems Committee of the General Building Contractors Association (GBCA) in collaboration with McGraw Hill, Maxwell Systems and Construction Computer Center.

Thursday, November 8, 2001
8:00 am - 3:30 pm

\$50 pp includes breakfast, lunch, breaks and all seminar materials
The Gregg Conference Center of the American College, Bryn Mawr, PA

"The Paperless & Wireless Jobsite & Office"

Many firms specializing in design and construction technology, software, hardware and internet solutions will be exhibiting their newest products.

Schedule for the Day

8:00-9:00AM Continental Breakfast and Visitation of Exhibitor Booths
9:00AM Presentation begins
12:00 - 1:00 Lunch
1:00 - 3:30PM Visitation of Exhibitor Booths

For full information and registration, contact **Mary Meszaros**, GBGA, PO Box 15959, Philadelphia, PA 19103, tel (215) 568-7015; fax (215) 568-3115; email: mmeszaros@gbca.net.

WEBSITE SPONSORSHIP PROGRAM

By Directors Carol Martsof and Walter DeLury

The Officers and Directors of the ASCE Philadelphia Section are pleased to announce the start of the "Sponsors" section of our recently upgraded web page www.asce-philly.org.

The Sponsorship Directory will provide three categories of "Sponsors" for the following annual fees:

Golden Gate Bridge Club	\$700.00
Silver City Bridge Club	\$500.00
Bronze Cast Bridge Club:	\$300.00

*E-mail and web page site address cannot be linked to the www.asce-philly.org site due to ASCE 501(c)(3) tax status.

The Sponsors section will also have the following General Provisions associated with it:

- Sponsor information on the ASCE web page is for a one-year period from October 1 to September 30 with web page updates occurring in October, November, January, February, March, April and August.

- The ASCE web page will run Sponsorship member employment opportunity ads on the ASCE web page as follows:

Golden Gate Bridge Club: one employment ad three times during the year

Silver City Bridge Club: one employment ad two times during the year

Bronze Cast Bridge Club: one employment ad one time during the year

The employment opportunity ads, once placed, will run until the next web page update.

Sponsorship will be for a one-year period as previously stated. There will be no refunds of Sponsorship payments and the names of Sponsorship members will be implemented within a month of receipt by ASCE. No company logos will be allowed. All electronic format information for Sponsorship ads must be received by ASCE prior to the 15th day of the month for the next update period.

- The ASCE will provide the following electronic format for the ad and it will be up to the sponsor to provide the ASCE with electronic information:

- Provide Company Name and one line biography (20 words or less)
- Job Position and Location
- Requirements of position (30 words or less)
- How to respond to job listing offer*

*E-mail and web site addresses cannot be linked to www.asce-philly.org site due to ASCE 501(c)(3) tax status.

**RESOLVE TO ATTEND
ALL SECTION MEETINGS
AND FUNCTIONS
THIS YEAR
AND INVITE YOUR
ASSOCIATES!!**

Section Profiles

Editor's Note: As Phila. Section President Chris L. Rood stated in his Summer 2001 President's Message, THE NEWS will publish brief biographies of Phila. Section, ASCE Officers, Board members, Technical Group Chairmen and other key activists in Section affairs. We continue here with the following:

John W. Stone, P.E. Secretary

John Stone is currently a manager in Deloitte & Touche's Construction Consulting Group in downtown Philadelphia. He is responsible for some of their project management oversight and construction dispute consulting assignments.

He has a Bachelor of Science degree from Temple University and a Master of Science in Engineering Management degree from Drexel University. He is also a registered Professional Engineer in Pennsylvania, and is active in the community, which he serves as Chairman of his township's Sewer Committee.

David C. Hanly Treasurer

David C. Hanly, in his second term as Treasurer, previously served the Section as President of the Younger Member Forum. Dave graduated from Temple University in 1992. He works in the Phila. Office of DMJM+HARRIS, an international consulting engineering firm. He and Marsha, his wife, live in Center City.

Christopher Menna Assistant Secretary

Christopher J. Menna, E.I.T., is a Senior Project Engineer employed by the Phila. Streets Department, Bridge Section. Chris is currently managing four bridge projects and helps to oversee the City's Bridge Rating Program. He also is the master programmer for the Strawberry Mansion Bridge Light System. In addition, he earned his BSCE from Temple University in 1994 and his MSCE from Villanova University in 1999. He presently serves as Assistant-Secretary for the Section Board and as an ASCE Zone I representative for the CYM. Other ASCE positions served include YMF Past-President 00-01, YMF President 99-00, and YMF Vice President 98-99. Chris continues to serve as the YMF's editor, a position he has held since 1995.

John Zarsky, P.E. Director

John is the Civil Engineering Department Manager for the Philadelphia office of Parsons Brinckerhoff. He has been with PB since his graduation in 1987 from Carnegie-Mellon University. Along with his staff supervision responsibilities, John also manages several transportation de-

sign projects for the PENNDOT and the Philadelphia Streets Department.

John is a Past President of the Philadelphia Section Younger Member Forum. Last year he received the Philadelphia Section Young Civil Engineer of the Year Award and the Engineers Club of Philadelphia presented him the 2000 Delaware Valley Young Engineer of the Year Award. This is John's second year as a Director of the Philadelphia Section. John is also active in the American Society of Highway Engineers and is a Director of the local chapter. He, his wife Kathleen, and their daughter Sarah, live in Radnor Township.

Sheldon A. Kinbar Director

Sheldon A. Kinbar retired on July 1, 2000 as Regional Administrator at the Federal Transit Administration's Region III Office in Philadelphia. As Regional Administrator, he was responsible for all FTA activities, including the capital, operating and planning grant programs, in a six-state region.

Shelly was in the FTA Philadelphia Regional Office since 1975, and served as Regional Administrator since July 1988. Before coming to FTA, he worked at the Federal Highway Administration, and at transit agencies in the Washington area.

He has a Bachelor of Civil Engineering degree from Polytechnic University and a Master of Science degree from Northwestern University and is a Registered Professional Engineer in New Jersey. He formerly served as a Director of the Philadelphia Section, ASCE from 1991 to 1993.

William Mulloy Director

Bill Mulloy earned a Bachelor of Science degree in Civil Engineering from Drexel University. He is Registered as a Professional Engineer in Pennsylvania. He is currently employed as a Civil Engineer with the Army Corps of Engineers in Philadelphia, and is involved with water resource projects. He has been active in the Engineering Management and Transportation Technical Groups of Philadelphia Section, ASCE. He is also a member of NSPE (National Society of Professional Engineers), APWA (American Public Works Association), and SAME (Society of American Military Engineers).

John F. Davis Director

John Davis is currently an Associate Professor in the Department of Civil Engineering at Widener University. He has received Ph.D., M. Engr., and B.S. degrees in Environmental Engineering from Penn State University and is Registered as a Professional Engineer in Delaware. In addition to teaching and research interests at Widener University, he has over 20 years experience in water and wastewater treatment and water quality modeling for government agencies and consultants.

JOIN THE SECTION'S TECHNICAL GROUPS

Construction

Brian Stover, P.E., Chairman
Urban Engineers, Inc.
530 Walnut St., 14th Floor
Philadelphia, PA 19106
(215) 922-8080

Structural

Dr. Mohiuddin (Ali) Khan, P.E., Chairman
Manager, Bridge Division
STV Incorporated
820 Bear Tavern, Suite 105
Trenton, NJ 08628
(609) 530-9618

Transportation

Chris L. Rood, P.E., Chairman
DMJM+HARRIS
126 Franklin St.
Riverside, NJ 08075
(856) 461-9565

Engineering Management

Ruben D. David, P.E., Co-Chairman
City of Philadelphia
Capital Program Office
One Parkway Building
1515 Arch Street
Philadelphia, PA 19102
(215) 683-4477

Luke B. McHugh, Co-Chairman

DMJM+HARRIS
The Atlantic Building
260 S. Broad St., Suite 1400
Philadelphia, PA 19102
(215) 399-4328

Delaware Valley Geo Institute (DVGI)

Michael Byle, P.E., Chairman
Gannett Fleming, Inc.
P.O. Box 80794
Valley Forge, PA 19484-0794
(610) 650-8101

Allen W. Cadden, P.E., Liaison

Schnabel Engineering Associates, Inc.
510 East Gay Street
West Chester, PA 19380
(610) 696-6066

IMPORTANT! 2001-2002 MEETING NOTICES

MARK YOUR CALENDAR NOW! The dates of the Philadelphia Section, ASCE monthly meetings and social functions, are as follows: (Check each upcoming edition of THE NEWS for additional details, possible date and topic changes.) THIS IS A TENTATIVE LIST.

ALL DINNER MEETINGS (except as noted):

Cocktails – 5:30 pm; Dinner – 6:30 pm; Meeting – 7:30 pm

Students: All dinner and/or luncheon are at discounted price. If you prefer, you are welcome to attend all meetings after dinner or luncheon, at no charge.

Wednesday, January 9, 2002 Joint Dinner Meeting with ASHE • Holiday Inn, King of Prussia, PA • “Transportation Issues” • Speaker Rep. Borski • Drexel University Night.

Thursday, January 17, 2002 Luncheon at the site of the “Kimmel Regional Arts Center Tour” • Speaker George Shaeffer

Thursday, February 21, 2002 Joint Dinner Meeting with South Jersey Branch, NJ Section, ASCE • Location to be announced • “Southern New Jersey Light Rail Camden to Trenton Project” • Speaker Charles “Ty” Dickerson • Temple University Night

Thursday, March 21, 2002 Joint Dinner Meeting with Delaware Valley Chapter, American Concrete Institute (ACI) • Williamson’s City Line • “Phillies New Ball Field” • Speaker Mr. Patel, Ewing Cole • Swarthmore University Night • Life Members Night

Thursday, April 18, 2002 Joint Dinner Meeting with Phila. Chapter, Pennsylvania Society of Professional Engineers (PSPE) • Williamson’s City Line, Philadelphia, PA • “CHOP Expansion” • Speaker: Anthony Kelly • Widener University Night • Past Presidents Night

Friday, May 3, 2002 Annual Spring Social Dinner Dance and Awards Presentations • Sugarloaf Conference Center, Chestnut Hill, PA • Details to be announced.

MARK S. MAYHEW, PE Regional Manager BOB McANALLY, PE Regional Manager

TAYLOR WISEMAN & TAYLOR

ENGINEERING • SURVEYING • PLANNING
LANDSCAPE ARCHITECTURE

Doylestown, PA West Chester, PA
(215) 230-7499 (610) 918-9200

ENTRY & P.E. POSITIONS AVAILABLE AT ALL LOCATIONS
WWW.TAYLORWISEMAN.COM



ANG ASSOCIATES, INC.

Consulting Engineers/Construction Managers

Design and Construction Services for:
Public and Private Facilities; Transportation;
Institutional; Educational; Industrial;
Commercial and Residential Projects

Penn Treaty Park Place Bldg. Tel: (215) 427-8700
1341 N. Delaware Ave., Suite 500 Fax: (215) 427-8710

a mentor/protégé partner of CSA Group
www.csagroup.com



Schnabel Engineering Associates, Inc. Geotechnical

Geosciences

Environmental

Construction Monitoring

Water Resources

Visit us at:

http://www.schnabel-eng.com

or call (610) 696-6066, West Chester, PA

15 Office from New Jersey to Georgia

Ann M. Tomalavage, P.E., PMP
President

Malarkey Consulting, Inc.

Project Management Consulting
Environmental Consulting

(610) 326-0205
1429 Shaner Drive fax: (610) 326-0530
Pottstown, PA 19465 tomalava@netcarrier.com



TEMPLE UNIVERSITY

A Commonwealth University
College of Engineering
Civil & Environmental Engineering Dept.

Dr. Frederick C. Schmitt, P.E.

1947 N. 12th Street
Philadelphia, PA 19122
(215) 204-7724 Fax: (215) 204-6936



GeoSystems Consultants

Engineering, Earth Sciences and
Geotechnical Laboratory Testing

514 Pennsylvania Avenue Telephone: 215-654-9800
Fort Washington, PA 19034 Fax: 215-643-9440
www.geosystems.com

DMJM HARRIS

The People Who Get It Done

HIGHWAYS • BRIDGES • MASS TRANSIT
RAILROADS • AVIATION • PORTS & HARBORS
PLANNING • TRAFFIC & ITS
www.dmjmharris.com

The Atlantic Building Pennsylvania Business Campus
260 South Broad Street 201 Gibraltar Road, Suite 120
Suite 1500 Horsham, PA 19044
Philadelphia, PA 19102 (215) 674-1913
(215) 735-0832 AN AECOM COMPANY

**YOUR BUSINESS CARD AD
SHOULD BE HERE!**

**CALL BOB WRIGHT
(215) 686-5538**

**There is no room in this country
for hyphenated Americans.**

– Theodore Roosevelt