

the news



Address Service Requested
FIRST CLASS MAIL

First Class
Postage Paid
Permit No. 130
Concordville
PA 19331

PHILADELPHIA SECTION
AMERICAN SOCIETY OF CIVIL ENGINEERS
P. O. Box 58186, Philadelphia, PA 19102-8186
Electronic Message Hotline: 1-800-461-4190 (24 hours a day)
Web site: <http://www.asce-philly.org>
National ASCE Central Number 1-800-548-ASCE • Toll Free

Vol. 74-6

Our 88th Year

March 2002

MARCH JOINT DINNER MEETING

Philadelphia Section, American Society of Civil Engineers
Delaware Valley Chapter, American Concrete Institute (ACI)

THURSDAY, MARCH 21, 2002

WILLIAMSON'S • GSB Building • City Line Avenue • Philadelphia, PA • See Location Map Below
Cocktails – 5:30 p.m. • Dinner – 6:30 p.m. • Meeting – 7:30 p.m.

SUBJECT: Doubling the Parking Capacity at Philadelphia International Airport
in Half the Time

SPEAKER: Nick Cinalli, P.E., Partner, DeDonnell & Naccarato

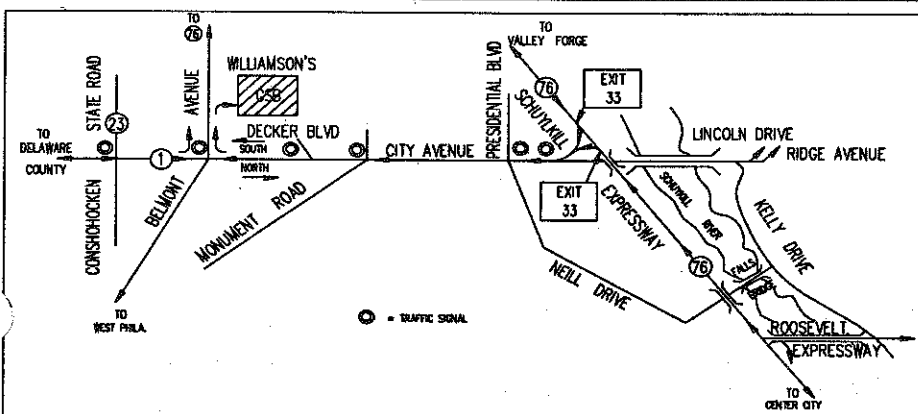
SPECIAL FEATURE: LIFE MEMBER NIGHT. The Philadelphia Section, ASCE will honor our new Life Members at this meeting.

SPECIAL FEATURE: SWARTHMORE COLLEGE NIGHT. The ASCE Student Chapter, Alumni and Faculty of the Civil Engineering Department of Swarthmore College will be honored at this meeting. All Students, Faculty and Alumni are cordially invited.

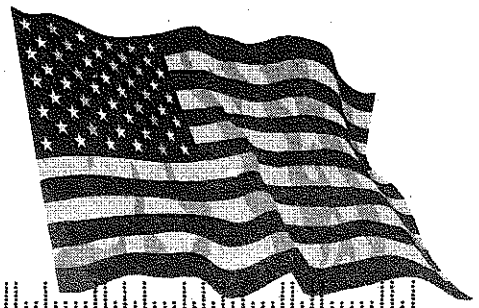
SPECIAL FEATURE: TECHNICAL GROUP NIGHT. The Philadelphia Section, ASCE will honor one of our five Technical Groups — the Delaware Valley GEO Institute (DVGI).

RESERVATIONS MUST BE SUBMITTED BY FRIDAY, MARCH 15, 2002. Please send your check for the number of attendees @ \$30.00 per member or guest, \$15.00 per ASCE Student Members, payable to the Phila. Section, ASCE, P.O. Box 58186, Phila., PA 19102-8186; or call the Electronic Message Center: 1-800-461-4190 (Open 24 hours/day) or e-mail the Section at info@asce-philly.org.

Adding 5,000 parking spaces to a fully operational airport facility is indeed a challenge. Considering such issues as time constraints, public bidding process, other ongoing construction projects at the facility along with an elevated attention to security specifications following the September 11th tragedy tend to elevate that challenge. Our Featured Speaker, Mr. Cinalli, will detail the project story
(Continued on Page 2)



Location Map for WILLIAMSON'S, GSB Building, City Line Avenue, Philadelphia



God Bless America!

TECHNICAL GROUP ACTIVITIES

Structures Group

March Dinner Meeting

DATE: Tuesday, March 26, 2002

TIME: 6:00 – 8:00 PM

COST: Free of Cost — Complimentary light dinner (sandwiches and soft drinks) will be provided

LOCATION: Drexel University, Lebow Engineering Center, Hill Seminar Room, 31st & Market Streets, Philadelphia, PA 19103

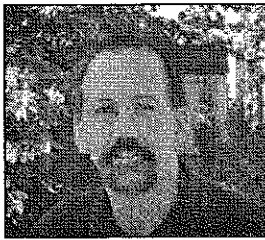
SUBJECT: I-95/Airport Interchange – Bridge Design and Construction

SPEAKERS: Joseph Capella & George Dunheimer, PennDOT-District 6-0, and Bijan Pashanamaei, DMJM+HARRIS

This photo presentation will show the construction of six bridges in PennDOT's I-95/Philadelphia International Airport Interchange Reconstruction Project. Bridge construction was largely completed in December 2001. The presentation will cover pile foundations, girder erection over I-95 mainline, shoring towers in wetlands, pot bearings 6 ft diameter, fracture critical steel box cross girder, 10 ft deep horizontally curved steel plate girders with 300 ft radius.

Reservations are required and seating is limited to 30. Please contact Ali Khan, Chairman, Structures Group, at (609) 530-9618; or call the Electronic Message Center: 1-800-461-4190 (open 24 hours/day).

(Continued on Page 3)



THE PRESIDENT'S MESSAGE

Dear Fellow Section Members and Friends:

Welcome to the Section's March issue of THE NEWS. Springtime is officially close by. One can almost smell the flowers. It's hard to believe that we are in March already. Time does indeed wait for no one. February flew by and was indeed another busy month. I do hope that many of you were able to participate in some of the Engineers' Week activities that took place locally during National Engineers' Week. The several that I attended were very rewarding. My hat is off to the members of the Delaware Valley Engineers' Week Council who volunteer so much time and talent to plan, develop, organize, promote and run many of the local Engineers Weeks' events. Also, a big "Thank You" goes to Past President Sandra May for once again orchestrating and holding the annual Student Activity Workshop. This event, the Sixth Annual, was held during Engineers' Week at the Cheltenham Mall and was a very well attended Outreach activity.

Additionally, our February Joint Dinner Meeting was another well-attended function. Charles (Ty) Dickerson gave the audience a very good overview of the planning, design and construction of New Jersey Transit's Southern New Jersey Camden to Trenton Light Rail Project. What an interesting and challenging project! Special thanks goes to the South Jersey Branch, New Jersey Section of ASCE for being such gracious hosts. There is still more to come. Our March Joint Dinner Meeting should prove to be just as good. We join forces with our fellow professionals from both the Delaware Valley Chapter, American Concrete Institute and the Delaware Valley Geo Institute. This joint meeting will give us all an opportunity to hear first hand about the Philadelphia International Airport's parking capacity solution. We also will be honoring our new Life Members as listed in our February issue of THE NEWS at this meeting. I look forward to seeing many of you there, and hopefully some new faces.

Your Section Board is presently looking at alternative avenues of getting THE NEWS out to you, our members, in a more timely and economical manner. One such avenue is e-mail delivery. The pdf file attached to such an e-mail would contain the same articles as the printed version. This will not only speed up its delivery to you but will also cut down on our mailing costs. Please refer to the survey on this alternative printed in this edition of THE NEWS and kindly complete and return it to us. We need to hear from all of our members on this matter. Thank You. Also, if you haven't been to the Section's website recently please take the time to pay it a visit. You won't regret it.

And it's not too early to mark your calendar now for the Annual Spring Social Dinner Dance & Awards Presentations. This year's event will be held on **Friday, May 3rd, 2002** at the Radisson Hotel in Trevoose, PA. This will be a gala affair that will also commemorate ASCE's 150th Year Anniversary and your Section's own 89th Anniversary. Resolve to attend this wonderful event. (Full details will appear in next month's issue of THE NEWS.)

In closing, I once again urge all members of the Section to actively participate in the Section's activities. This is YOUR Section. "Be involved! Participate! Champion a Cause!" You'll be amazed how wonderful the feeling of involvement can be. If anyone is interested in helping out and/or becoming a Section Board Member please let me or any of the present Board members know. You do have a great Section. Also your input is very important to us in making this Section everything you want it to be!

Until next time - be safe, healthy and prosperous. Remember too "For our children, the road to happiness and success is usually paved by our example."

GOD BLESS AMERICA!

Sincerely yours,
Chris L. Rood, P.E.
President, Philadelphia Section, ASCE

SECTION WEB SITE!

Our Section's web site has taken on a new look! Check us out at www.asce-philly.org. Make sure you bookmark this site to check of latest meetings and events, links and much more! Comments and/or suggestions? Please contact us either via our Electronic Message Hotline at 1-800-461-4190 (24 hours a day) or e-mail at info@asce-philly.org.

PHILA. SECTION, ASCE OFFICERS 2001-2002

PRESIDENT

Chris L. Rood

PRESIDENT-ELECT

Ruben D. David

VICE PRESIDENT

Allan F. Moore, Jr.

SECRETARY

John W. Stone

TREASURER

David C. Hanly

ASSISTANT SECRETARY

Christopher Menna

MEMBERSHIP SECRETARY

Robert M. Brooks

ASSISTANT TREASURER

Mark Washington

DIRECTORS

John F. Davis
Carol Martsoff
John Zarsky
Gerald Donnelly, President, Reading Branch

Walter J. DeLury, Jr.
William Mulloy
Sheldon A. Kinbar

PAST PRESIDENTS

Sandra J. May
Faruq M.A. Siddiqui
Thomas J. Branigan

President - Chris L. Rood
DMJM+HARRIS
126 Franklin Street
Riverside, NJ 08075
(856) 461-9565

Secretary - John W. Stone
Deloitte and Touche,
Construction Consulting Services
1700 Market Street, 22nd Floor
Philadelphia, PA 19103-3984
(215) 299-4530; Fax (215) 405-3157
Email: jostone@deloitte.com

PUBLICATIONS COMMITTEE
Chairman and Editor of THE NEWS
Sidney Robin

Staff Writers
Joe Syrnick Bob Wright

SEND COPY TO:
Sidney Robin
64 Nancy Drive
Richboro, PA 18954
(215) 322-7464

COPY DEADLINE FOR
APRIL 2002 ISSUE
MARCH 21, 2002

March Joint Dinner Meeting

(Continued from Page 1)

by reviewing the methods used, the process streamlining, the logistics coordination, security and the steps utilized for meeting various customer expectations.

Mr. Cinalli is a partner at O'Donnell & Naccarato, which is headquartered in Philadelphia, and is one of the Mid-Atlantic Region's largest consulting structural engineering firms. He is a seasoned executive with experience in both structural engineering and project/construction management. Since joining the firm in 1975, he has overseen a wide variety of residential, commercial, manufacturing and institutional projects. Mr. Cinalli began his tenure with O'Donnell & Naccarato as a Design Engineer, soon ascending the ranks as a Project Structural Engineer, Direc-

tor of Construction Management and Executive Vice President. He holds a B.S. degree in Civil Engineering from Villanova University and among his several professional affiliations are the Mid-Atlantic Chapter Construction Management Association, the American Concrete Institute International and the American Society of Civil Engineers.

SECOND ANNUAL READING PHILLIES OUTING

Come join us at the 2nd Annual Reading Phillies Picnic on **Sunday, June 16th, 2002.**

Reading Branch ASCE invites you to join your associates and their families for this 2nd Annual Joint Social Event with the Philadelphia Section. Come and participate in an entertaining

(Continued on Page 3)

Technical Group Activities

(Continued from Page 1)

Engineering Management Group

March Luncheon Meeting

DATE: Wednesday, March 13, 2002

TIME: 12 Noon

COST: \$10; Students: \$5.00

LOCATION: Municipal Services Building, 16th Floor, Conference Room Y, 15th & JFK Blvd, Philadelphia, PA

SUBJECT: Capital Program Office: How Is It Since Inception?

SPEAKER: Richard Tustin, RA, Director, Capital Program Office, City of Philadelphia. Richard Tustin will discuss the organization, progress, past accomplishments and current capital improvement projects of Capital Program Office since inception a few years ago.

For reservations, contact **Ruben D. David, P.E.** at (215) 683-4477 or **Dennis MacBride, P.E.**, at (215) 568-6500 as soon as possible.

April Luncheon Meeting

DATE: Wednesday, April 3, 2002

TIME: 12 Noon

COST: \$10; Students: \$5.00

LOCATION: Municipal Services Building, 16th Floor, Conference Room T, 15th & JFK Blvd, Philadelphia, PA

SUBJECT: The National Constitution Center

SPEAKER: Emily Bittenbender, Project Director, The National Constitution Center

Emily Bittenbender will discuss the National Constitution Center, an independent, non-profit organization whose mission is to build the first museum dedicated to honor our nation's constitution and educate the public to the significance of it in our daily lives. She will discuss how the Center plans to deliver a world class museum facility within budget.

For reservations, contact **Dennis MacBride, P.E.**, Co-Chairman, Engineering Management Group, at (215) 568-6500 by Wednesday, March 27, 2002.

Construction and Transportation Groups

March Joint Luncheon Meeting

DATE: Wednesday, March 27, 2002

TIME: 12 Noon

COST: \$10; Students: \$5.00

LOCATION: Conference Room Z on the 16th Floor of the Municipal Service Building, 15th & JFK Boulevard, Philadelphia, PA

SUBJECT: Route 309 Reconstruction Project

SPEAKER: Brian Early, P.E., PENNDOT

The SR309 Expressway Reconstruction is a \$200 million project to reconstruct 10 miles of expressway between Cheltenham Avenue in Philadelphia to Welsh Road (PA 63) near Montgomeryville.

With the Fort Washington and the Easton Road interchanges will undergo major changes to improve the flow of traffic. In all there will be 12 construction contracts, five of which will construct the mainline with the remainder developing alternate routes along the corridor. The mainline projects will all move to construction between

YOUNGER MEMBER FORUM NEWS

by Christopher Menna,

Forum Editor and Past President

Younger Member Forum

Christopher Wright, President

DMJM+HARRIS

The Atlantic Building

260 S. Broad St., Suite 1500

Philadelphia, PA 19102

(215) 735-0832, ext. 293

The Younger Member Forum (YMF) current membership includes college students, recent graduates, and young engineers including registered Professional Engineers who are 35 years of age and under.

Young engineers or college students who would like to become part of the YMF please contact **Mike McAtee**, Urban Engineers, Inc. at mjmcatee@urbanengineers.com or at (215) 922-8080.

Past Accomplishments

In association with the 2002 Delaware Valley Engineer's Week, the YMF participated in the Sixth Annual *Critical Issues Facing Young Engineers Seminar* on Monday, February 25, 2002 in Nesbitt Hall at Drexel University. The event was jointly sponsored by the Philadelphia Section, ASCE and the Engineers' Club of Philadelphia, and provided an opportunity for Younger Engineers to participate in an open discussion with prominent members of the engineering community.

The meeting format included a panel of speakers led by **Carol Martsoff**, Parsons Brinkerhoff, and **Casey Moore**, McMahon Associates, the 2002 Delaware Valley Young Engineers of the year. Other featured panelists included prominent engineers and professors. Admission, food, and refreshments were provided free. Special thanks go to **Carol Martsoff**, **Sandra May**, PECO Energy, and **Christopher Wright** for organizing this successful event.

On Wednesday, March 6, 2002, the South Jersey Younger Member Forum and the Phila. Section YMF held a joint technical meeting on board the Battleship New Jersey in Camden. Over 40 attendees enjoyed a brief tour of this historic Battleship prior to the meeting. The featured speaker was **Dr. Joseph Mullin**, Professor of Engineering Management at Drexel University. Dr. Mullin addressed post-graduate education, and more specifically, the decision to pursue an M.S. in Engineering Management versus an M.B.A. Kudos to **Brian Lipko**, Stone & Webster, President of the South Jersey Younger Member Forum, for coordinating this sell-out event!

2001 and 2004 with completion in 2006. Currently, the first mainline and two of the alternate route contracts are underway.

A buffet lunch will be served starting at Noon with the presentation beginning at 12:30 PM.

Reservations are required. Seating is limited to 50. Please contact either **Joanna Robinson** at (215) 922-8080 or **Chris Rood**, Chairman, Transportation Group, (856) 461-9565, if you have any questions and for reservations.

Upcoming Events

Several YMF members are planning to visit local Colleges and Universities in March and April to hold open discussions with Civil Engineering students. The YMF will respond to questions and concerns from the students at this informal gathering. The students will be informed of what to expect from the engineering world after graduation. If you would like to volunteer as a speaker, please contact **James Markham**, Pennoni Associates at (215) 222-3000.

In April, the YMF is organizing a technical meeting on the Philadelphia Bike Network Program. The featured speakers will be **Tom Branigan** and **Bob Wright** of the City of Philadelphia Department of Streets. For information on this event, please contact **Christopher Wright** at the phone number or email address listed above.

The YMF is also planning another happy hour and technical meeting. Emails announcing the details of these upcoming events will be sent out soon. Hope to see you there!

Member Spotlight

The purpose of the member spotlight is to introduce a fellow YMF member to the Delaware Valley Engineering Community.

Danielle Farrell, E.I.T., is a Wastewater Treatment Engineer with **Malcolm Pirnie, Inc.**, in Philadelphia, PA. Danielle received both her Bachelor's and Master's degrees in civil engineering at Case Western Reserve University in Cleveland, Ohio. After graduation, she moved to New York to begin her career as a Civil Engineer. Recently, Danielle relocated to Philadelphia and is now involved with the design of a 240,000 cfm odor control system for one of the New York City Department of Environmental Protection's Water Pollution Control Plants.

Throughout her career, Danielle has been involved in complex water, wastewater, groundwater, and stormwater treatment projects for a myriad of municipalities and industries. In addition, she intends to sit for (and pass!) the PE exam in April 2002.

Danielle has been actively involved with ASCE since her undergraduate days and received the North Jersey Section Undergraduate Student Scholarship. She was also awarded the Dames and Moore Fellowship for her graduate research. Since moving to Philadelphia, Danielle has become more active with both the Philadelphia and South Jersey YMF groups and we look forward to her continued involvement.

Reading Phillies Outing

(Continued from Page 2)

minor league game between our Reading Phillies and the Akron Aeros at Reading Municipal Stadium. The festivities begin at 12:00 noon in the Picnic Pavilion along the 3rd base line. Food and beverages include: BBQ chicken, hot dogs, burgers, baked ziti, corn on the cob, pasta and potato salads, fresh fruit, chips, pretzels, soda, iced tea, and lemonade. The picnic buffet runs from 12:00 noon until 2:00 p.m. and the game begins at 1:05 p.m.

(Continued on Page 4)

FEBRUARY JOINT DINNER MEETING

February 21, 2002

The Wyndham Hotel, Mt. Laurel, NJ

"The New Jersey Transit Project"

By Bob Wright, Staff Writer and Sid Robin, Editor

In spite of a last-minute change in scheduled location, a great turnout of members, guests and students attended and enjoyed the Annual Joint Meeting of the Philadelphia Section, ASCE and the South Jersey Branch, New Jersey Section, ASCE. Kudos to **Bob Wright, Chris Rood** and their helpers in the Philadelphia Section and the South Jersey Branch, ASCE, for their speedy and diligent work in notifying their fellow members of the change, and fulfilling a highly successful meeting.

The subject of the Joint Meeting was "New Jersey Transit's Southern New Jersey Light Rail Transit Project." Principal Speaker was **Charles (Ty) Dickerson, P.E.**, Director of Engineering and Construction, New Jersey Transit. The meeting was excellently co-chaired by **Dan E. Brammell, P.E.**, President of the South Jersey Branch; and **Chris L. Rood, P.E.**, President of the Philadelphia Section. Mr. Brammell and Mr. Rood made announcements relevant to their respective organizations.

Temple University Night

The meeting focused on and honored the ASCE Student Chapter, Alumni and Faculty of the Civil Engineering Department of Temple University. Acting ASCE Student Chapter Faculty Advisor, **Dr. Frederick C. Schmitt, P.E.**, (Faculty Advisor, **Dr. Philip Udo-Inyang, P.E.**, is on vacation and could not attend the meeting.) thanked his hosts for their courtesies in recognizing Temple University's Civil Engineering community. He proudly introduced and acknowledged the impressive number of Students, Alumni and Faculty in attendance. Dr. Schmitt briefly reviewed the current and proposed curricula advances in the undergraduate and post-graduate Civil Engineering programs.

Student Chapter President Speaks

Temple ASCE Student Chapter President, **Milton Gomez, Jr.** also thanked the host Sections for honoring the Student Chapter, and introduced his fellow officers: Vice President, **Pedro Pinto**; Treasurer, **Kobby Addo-Boateng**; Secretary, **Jon Fiedler**; Chairperson, **Sean Kransnasky**; Concrete Chairperson, **Kwebu Donkor**. Mr. Gomez discussed the purposes of the Chapter, and activities in its busy agenda. The development of professionalism in the Civil Engineering students is vigorously encouraged. This gives the students opportunities to perform effectively together in school assignments and group projects of relevance to ASCE. These projects include: open houses, career fairs, banquets, and technical and social events such as regional and National competitions in the Annual Concrete Canoe Race (construction of this year's canoe is now in process); and model steel bridge and concrete beam design and construction, including precast concrete members.

Volunteers from the Chapter speak to high school students, advocating careers in Civil Engineering; conduct Conferences with potential employers, consulting firms, contractors, etc.

Rood Introduces Mr. Dickerson

Philadelphia Section President Rood introduced **Charles "Ty" Dickerson**, Director of Engineering and Construction, New Jersey Transit, the featured speaker of the evening. Mr. Dickerson noted that the Southern New Jersey Light Rail Transit System (SNJLRTS) was the second design-build-operate-maintain (DBOM) line in the United States (the first being NJ Transit's Hudson-Bergen Light Rail line in Jersey City). It would be the first to use diesel-powered light rail vehicles (DLRV's) in this country.

The line, also known as the Camden-Trenton Line, will have 20 stations in its 34-mile length between these two cities. At nine of these stations, intermodal transfers will be available to NJ Transit bus and rail routes and the PATCO line. The Line will operate on an active freight railroad corridor served by Conrail.

Objectives of the Line and Cost Analysis

The Line's goals are mobility, protection of the environment, and promotion of economic development. The last goal is particularly critical as the area which the Line serves is currently economically depressed and new investment and jobs are desperately needed. It is hoped that the Line will be the catalyst for such new investment.

Mr. Dickerson explained that the total cost of the Line will be approximately \$1 billion, with no federal funding being utilized (all money is coming from the State of New Jersey). The DBOM contractor for the project is the Southern New Jersey Rail Consortium, consisting of Bechtel and Adtranz. The Canadian rail car manufacturer Bombardier recently acquired Adtranz and will therefore assume Adtranz' role in the effort.

Details of the Line Enunciated

Mr. Dickerson gave a pictorial tour of the line, starting in Camden, where the terminal will be adjacent to the Tweeter Center. Where track is located in streets, it will be fully encased in concrete paving. All trackage will be continuously welded rail with considerable use of concrete ties where open ballast construction (i.e. non-encased in paving) is used. Four stops will be located in central Camden to serve attractions such as the Aquarium, Campbell's Field, the Trans-Delaware Tram, and the Walter Rand Transportation Center, where transfers to NJT buses and PATCO will be facilitated.

Once the line leaves downtown Camden, it travels in its own right-of-way. A total of 50 public grade crossings and five private crossings are on this portion of the line. Protective devices using "predictors", which allow a constant warning time regardless of train speed, have been installed.

Station shelters are simple to have low visual impact on surrounding buildings, with 200-foot long platforms to accommodate 2-car trains. Parking will be provided at most outlying stations.

Bridges, Yard and Shop

Mr. Dickerson spoke about the bridges on the Line. Of the 17 total structures, 5 will be completely replaced, while the remainder will be rehabilitated. The longest of these, the bridge over the Rancocas Creek, is a new arch which replaced a swing bridge. Last Spring, when this bridge was being placed, a mishap occurred and the bridge partially sank into the creek. This was corrected shortly afterward.

A new yard and shop, with a 50,000 square foot building, are being completed in Camden. This facility will store and maintain the 20 cars being acquired for operation. The first of the cars is due from the builder, Bombardier, this spring.

Operating Schedule and Construction Details

Mr. Dickerson reported on the carefully-coordinated operating schedule of the line. Freight trains will use the line from 10 PM to 6 AM daily, and through agreements reached with federal agencies, the Line will be permitted to run passenger trains only when freight trains are not on the route (6 AM to 10 PM). This will no doubt result in some operational difficulties which will be dealt with once the line begins regular service and the usage patterns are observed.

The project was started in October 1999 and Mr. Dickerson noted that construction will complete by the end of this year. Revenue service (carrying passengers) is anticipated to start next spring.

Economic Impact

Mr. Dickerson summarized the presentation with an estimate of the economic impact of the Line. It has produced 2200 construction jobs and another 3000-plus "indirect" jobs can be attributed to the Line. A total of \$700 million in economic expansion will be generated once the Line is up and running.

Questions and Answer Period

A lively question and answer period featured extensive discussion from audience members' comments and questions on this great complex project, followed, covering issues such as expansion in the welded rail, fare collection on the Line, and possible future expansion. These were addressed unequivocally by our well-informed and articulate speaker. Philadelphia Section President Rood and South Jersey Branch President Brammell presented Gifts of Appreciation, on behalf of their respective Society affiliates, to our distinguished speaker for his excellent talk.

Reading Phillies Outing

(Continued from Page 3)

This is a fun-filled event with a variety of spectator participation activities between innings. Come out and enjoy the day with your fellow members and their families.

Cost is \$20.00 per person.

For reservations contact **Teri Frick, STV, (610) 385-8416**, or e-mail address: fricktm@stvinc.com.

PHILADELPHIA SECTION, ASCE HUMPHREY FUND SCHOLARSHIPS

The Philadelphia Section, ASCE, is pleased to announce the availability of the following types of undergraduate scholarships for 2002. Scholarships will be awarded at our Annual Spring Social Dinner-Dance, on Friday, May 3, 2002, at the Radisson Hotel Philadelphia Northeast, Trevoise, PA.

Type of Award:

We recognize that the different colleges have differences in the regulations as to scholarships, stipends and awards. It is the Philadelphia Section's intent to provide these awards to give the maximum financial support to the individual engineering student within his/her college's rules. Therefore, the form of award will be that most beneficial to the student consistent with his/her college regulations. Unless indicated otherwise by the student, a check in the name of the award recipient will be presented. No two (2) scholarships will be awarded to the same student.

Scholarship Type 1

It is anticipated that up to three (3) scholarships, each worth up to \$2,000, will be awarded. The number and amount of the actual awards remains at the discretion of both the Section's Scholarship Committee and the Section's Board of Directors.

Eligibility Requirements:

1. The student must be matriculating in a full-time Civil Engineering or Architectural Engineering program in one of the six (6) colleges in the Philadelphia Section region (Drexel University, University of Pennsylvania, Swarthmore College, Temple University, Villanova University or Widener University).
2. The student must be an active participant in the ASCE Student Chapter.
3. Students in their sophomore and junior year (and Pre-Juniors at Drexel) are eligible to submit.

Submission:

The candidate must submit the following to his/her Faculty Advisor:

- An essay, limited to 1,000 words, on "How could civil engineers assist in the security of the nation's infrastructures in the wake of recent terrorist attacks? What is the role of civil engineering profession in public safety in reaction to these events?" is required.
- The candidate's name, GPA and/or class rank and an address/telephone number where they can be reached must be included. Additional information for consideration (such as need) is allowed. A letter and/or resume is an acceptable means to provide this information.

Faculty Advisor Evaluation:

Each Chapter's Advisor will evaluate all their candidates and select two (2) for submission to Philadelphia Section's Scholarship Committee (address under "Deadline" below). The GPA and/or class rank should be verified as they may be used by the Scholarship Committee in their evaluation. If the university does not release class rank, the Advisor should provide some indication as to

the candidate's standing. The advisor will formally nominate these candidates by including a letter of endorsement from a member of the faculty along with the submission.

Section Evaluation:

The Section Scholarship Committee will evaluate all nominations and select award recipients for scholarships or other form of stipend.

Awardees will be invited guests at our Annual Spring Social Dinner-Dance on May 3, 2002 to receive their awards and will be asked to participate in future ASCE educational outreach activities.

Submission Deadline:

Submissions must be made to the Faculty Advisor by **Wednesday, March 13, 2002**. Faculty Advisors must submit their nominations to Mr. **Ruben D. David, P.E.**, President-Elect of the Philadelphia Section, ASCE at Philadelphia Section - ASCE, P.O. Box 58186, Philadelphia, PA 19102-8186 by **Friday, March 22, 2002**. The President-Elect will forward all submissions to the Section's Scholarship Committee.

Scholarship Type 2

One (1) scholarship worth up to \$1500, will be awarded.

Eligibility Requirements:

1. The student must be the child of an active Philadelphia Section member.
2. The student must be matriculating in a full-time Civil Engineering or Architectural Engineering program
3. The student must be an active participant in the ASCE Student Chapter.
4. Students in their sophomore and junior year are eligible to submit.

Submission:

To apply for this scholarship, the candidate must submit the following:

- An essay, limited to 1,000 words, on "How could civil engineers assist in the security of the nation's infrastructures in the wake of recent terrorist attacks? What is the role of civil engineering profession in public safety in reaction to these events?" is required.
- The candidate's name, GPA and/or class rank and an address/telephone number where they can be reached must be included. Additional information for consideration (such as need) is allowed. A letter and/or resume with an official transcript are an acceptable means to provide this information.

- Two letters of recommendation. One must be from one of the civil engineering program faculty members, and the other may be from another faculty member, present or past employer, or other responsible person. The recommenders should send their letter of recommendation directly to the Section's President-Elect at the address noted under "Submission Deadline," to arrive no later than the deadline date.

(Continued on Page 6)

NOMINATIONS FOR OFFICE

Philadelphia Section, ASCE 2002- 2003

In accordance with the Constitution and By-laws of the Section, the Nominating Committee, appointed by President **Chris L. Rood** and chaired by Past President **Thomas J. Branigan**, has submitted the following slate of nominees for elective office for the 2002-2003 administrative years:

President: **Ruben D. David** (moves from current President-Elect position automatically)

President-Elect: **Allan F. Moore, Jr.** (one year as President-Elect followed by one year as President)

Vice President: **Brian Stover**

Secretary: **John Stone**

Directors: 2-year terms

Karen Anne Riley

Christopher Menna

Patricia M. Gallagher

Non-voting assistant position candidates have been proposed as follows:

Assistant Secretary: **Alyson Lester**

Assistant Treasurer: **Mark Washington**

Offices in which incumbents have one remaining year to serve are:

Treasurer: **David C. Hanly**

Membership Secretary:

Dr. Robert M. Brooks

Directors: **Walt DeLury, Carol Martsoff and John Zarsky**

Past Presidents to serve on the Board of Directors are:

Faruq Siddiqui - one year

Thomas J. Branigan - two years

Chris L. Rood - three years

The above slate was proposed at the **February 21, 2002** Board of Directors Meeting and will be announced at the **March 21, 2002** Section Meeting. If the Section Secretary receives no additional nominations by **Friday, March 29, 2002**, the above slate shall be declared as elected at that time. The Officers will be officially installed at the Section's Annual Spring Social Dinner Dance & Awards Presentations on **Friday, May 3, 2002** at the Radisson Hotel, Northeast Philadelphia, Trevoise, PA.

The Section's appreciation is extended to the Nominating Committee, which consisted of **Thomas J. Branigan** (chair), **Chris L. Rood**, **Allan F. Moore, Jr.**, **David C. Hanly**, **Ruben D. David** and **Robert Wright**.

A Short Course in Human Relationships...

The six hardest words to say:
I admit I made a mistake.

The five most helpful words:
You did a good job.

The four wisest words:
What is your opinion?

The two most winning words:
Thank You

The one most important word: **We**

The least important word: **I**

SECTION MEMBER PEIRCE INVOLVED IN WORLD TRADE CENTER RECOVERY PROJECT

Philadelphia Section, ASCE Member **John Peirce** and his firm, Peirce Engineering, located in Collegeville, have served as part of the engineering team in the World Trade Center (WTC) debris recovery/removal effort. Peirce Engineering was brought into the project to develop an expedited design of the superstructure of a temporary five-span, 460-foot long, two-lane modular truss bridge with an attached pedestrian walkway. This bridge was designed to provide site access for emergency vehicles and construction equipment to WTC's 7-story deep basement. It was needed for both emergency purposes as well as recovery/removal of WTC debris.

Peirce Engineering served as the engineer of record for this structure, which included modular tower piers in addition to the superstructure/deck. Peirce was a subcontractor to the bridge supplier/contractor, Acrow Corporation of America, of Carlstadt, New Jersey.

The Phila. Section, ASCE congratulates John for his efforts in this important endeavor and is proud of the services of a member of the Philadelphia Section in the WTC recovery program.

THE PHILADELPHIA SECTION E-NEWS AN ALTERNATIVE TO THE MAIL

Submitted by *Thomas Branigan & Walt DeLury*

The Phila. Section, ASCE Board of Directors is currently exploring ways to reduce the Section's operating expenses while continuing to provide a high level of service to the membership. One possible reduction method we are considering is to offer our membership the opportunity of receiving THE NEWS via e-mail vs. through the US Postal Service. If you opt for e-mail delivery, your copy of THE NEWS should arrive 7-10 calendar days ahead of the US Postal Service delivered version. E-mail delivery will not only be quicker than the current method, but it will save the Philadelphia Section considerable printing and mailing charges as well. Another advantage with an electronic version is that you can forward THE NEWS to others interested in our Section's activities. E-mail receipt of THE NEWS will require downloading a free copy of Adobe Acrobat Reader 4.0 with receipt of your first edition of THE NEWS.

At this time we are providing members with a survey form to elicit their opinion of how they would like to receive THE NEWS in the future.

E-mail THE NEWS to me @

US Postal Service mail THE NEWS to me at
 home or at work

E-mail and USPS mail THE NEWS to me at
 home or at work

Please take a few seconds to read and respond to this survey to help the Philadelphia Section of

LIFE MEMBERS TO BE HONORED AT MARCH DINNER MEETING

By *Allan F. Moore, Jr., Vice President*

This year, sixteen Philadelphia Section, ASCE Members will become Life Members of ASCE. These members will be honored at our March 21, 2002 Dinner Meeting, when we will present their Life Member Certificates to them.

Achieving Life Membership in ASCE requires a career of service to ASCE and the Civil Engineering Profession. To qualify for Life Membership, a member must:

- Have reached the age of 65
- Have paid dues for a minimum of 20 years
- Have paid dues in any membership grade

for a number of years that when added to their age equals or exceeds 95

Life Members are exempt from dues and need only pay a small service fee to receive *ASCE News* and *Civil Engineering* magazine.

In 2002, the following members of the Philadelphia Section will achieve the status of Life Member:

Myron Bernhang
 Vincent Calvarese
 Louis Cheifetz
 John Coscia
 Murray Cowan
 Harry Harris
 Harvey Kagan
 Peter Krasas
 Robert McAuliffe
 Gary Munkelt
 Carl Nieberle
 Celestino 'Chuck' Pennoni
 Frederick Williams
 Paul Woodruff
 Ramesh Chokshi
 Gerald Fornwald

ASCE appreciates the lifelong support of these members. We thank them for their contributions and years of dedication to our profession. We hope you will join us on March 21st to congratulate our new Life Members.

ASCE, CELEBRATING 150 YEARS OF BUILDING A BETTER WORLD

Founded in 1852, the American Society of Civil Engineers (ASCE) is America's oldest and preeminent National Society for Civil Engineering. Through your continued support and participation, ASCE advances the science and profession of civil engineering to enhance the welfare of humanity.

ASCE better serve you, our membership.

You can call in your response to the survey at 1-800-461-4190 (24 hours a day); e-mail your response to us at info@asce-philly.org; or let us know your response at the monthly meeting in March. Be sure to include your name, address, e-mail address (es), if applicable, and your ASCE

2002 DELAWARE VALLEY SCIENCE FAIRS

The Philadelphia Section, ASCE, will again be participating in the **Annual Delaware Valley Science Fairs**. This year's Fairs' judging day will be **Wednesday, April 10, 2002** at the Fort Washington Expo Center, Fort Washington, PA. As in the past, the Section will be judging, and subsequently presenting Special Awards. Our Section is looking for 6 to 8 judges to participate in our judging, with the Science Fairs needing approximately 500 judges.

For further information and/or to volunteer as a judge, please contact Philadelphia Section President **Chris L. Rood, P.E.** at (856) 461-9565, ext 102 or via e-mail at C-T-Rood@msn.com.

HUMPHREY FUND

(Continued from Page 5)

Section Evaluation:

The Section's Scholarship Committee will evaluate all submissions and select the award recipients.

Awardees will be invited guests at our Annual Spring Social Dinner-Dance on **May 3, 2002** to receive their awards and will be asked to participate in future ASCE educational outreach activities.

Submission Deadline:

Submissions must be made by **Friday, March 22, 2002** to Mr. **Ruben D. David, P.E.** President-Elect of the Philadelphia Section - Philadelphia Section - ASCE, P.O. Box 58186, Philadelphia, PA 19102-8186.

DEEP FOUNDATIONS COURSE OFFERED

Foundations Courses, Inc. presents "Geotechnical and Structural Design and Construction Monitoring of Deep Foundation" **May 2-4, 2002** in Washington, DC. This course is intended for Geotechnical Specialists, Structural Designers, Engineering Geologists, and Deep Foundation Contractors and Materials Suppliers involved in the design and construction monitoring of driven piles, drilled shafts, auger cast and micro piles. Early registration ends April 10th. For more information or a brochure please contact **Jae Law** at Foundations Courses, Inc. at (303) 494-0702.

NEW MEMBERS

The Philadelphia Section, ASCE welcomes the following new members:

Richard Bender; Paul Scally; Deborah Nemiroff; Mary Hoppe; Matthew Schiffer; Ann Marie Vigilante; Benjamin Ditzler; Luis Defrancesco; Karen Perry; Susan Christensen; Jonah Eaton; Fred Benton; Daniel Tetteh; Stephen Dasovich; Kevin Yarnell; J. Angermeie; Den Forrest; and Thomas Dominiecki.

Membership ID Number with your preference. We hope to notify the membership of the results of the survey at the April Monthly Dinner Meeting.

WEBSITE SPONSORSHIP PROGRAM

Directors Carol Martsolf and Walter DeLury

The Officers and Directors of the ASCE Philadelphia Section are pleased to advise you of the "Sponsors" section of our recently upgraded web page www.asce-philly.org.

The Sponsorship Directory will provide three categories of "Sponsors" for the following annual fees:

| | |
|--------------------------|----------|
| Golden Gate Bridge Club | \$700.00 |
| Silver City Bridge Club | \$500.00 |
| Bronze Cast Bridge Club: | \$300.00 |

*E-mail and web page site address cannot be linked to the www.asce-philly.org site due to ASCE 501(c)(3) tax status.

The Sponsors section will also have the following General Provisions associated with it:

- Sponsor information on the ASCE web page is for a one-year period from October 1 to September 30 with web page updates occurring in October, November, January, February, March, April and August.

- The ASCE web page will run Sponsorship member employment opportunity ads on the ASCE web page as follows:

Golden Gate Bridge Club: one employment ad three times during the year

Silver City Bridge Club: one employment ad two times during the year

Bronze Cast Bridge Club: one employment ad one time during the year

The employment opportunity ads, once ad, will run until the next web page update.

Sponsorship will be for a one-year period as previously stated. There will be no refunds of Sponsorship payments and the names of Sponsorship members will be implemented within a month of receipt by ASCE. No company logos will be allowed. All electronic format information for Sponsorship ads must be received by ASCE prior to the 15th day of the month for the next update period.

- The ASCE will provide the following electronic format for the ad and it will be up to the sponsor to provide the ASCE with electronic information:

- Provide Company Name and one line biography (20 words or less)
- Job Position and Location
- Requirements of position (30 words or less)
- How to respond to job listing offer*

*E-mail and web site addresses cannot be linked to www.asce-philly.org site due to ASCE 501(c)(3) tax status.

PHILADELPHIA SECTION NOMINATED FOR 2001 STATE PUBLIC RELATIONS AWARD

For the third consecutive year, a State Public Relations Award will be presented to an ASCE Section or Branch that has implemented an outstanding public relations program. A public relations program is deemed successful if it raised awareness for the Section or Branch, the civil engineering profession, civil engineering feats, or an issue adopted by the Section or Branch.

For 2001, there are two strong candidates the National Capital Section (two entries) and the Philadelphia Section. The winning Section will be presented with the award in October, at the Civil Engineering Conference and Exposition Leadership Breakfast.

Philadelphia Section Build-a-thon, Drexel University

On Tuesday, June 19, 2001, Sandra May, our Outreach Coordinator, organized the Philadelphia Section, ASCE and Drexel University sponsorship of an educational forum at the University's Woodring Laboratories. Approximately 30 students (grades 5 to 7) from the West Philadelphia Community Center participated. The objective of the forum was to introduce the basic concepts of engineering to the participants and to encourage these youth to pursue a science and technology-based education and career.

After an overall welcome and introductory session, the students were divided into groups and participated in three different hands-on interactive activities, which were designed to span a wide range of engineering disciplines: structural engineering, materials engineering and electric-power engineering. The structural engineering activity included a basic engineering design competition among the students. At the conclusion of the group activities, the students were brought together, and those who won the design competition were awarded trophies. The winners were encouraged to share the secrets of their success with the group. At this time, all the participants received a gift (Drexel engineering t-shirt and key chain) for participating. Then a closing presentation was given, which emphasized the academic requirements needed to be accepted into a civil engineering program and to succeed in a technologically-based career. The event was covered by a local Philadelphia television station.

EMPIRE STATE BUILDING CELEBRATION

The Metropolitan Section (New York) of the American Society of Civil Engineers (ASCE) has commissioned ErrolGraphics and artist Craig Holmes the preparation of an artistic poster and notecards to celebrate the dedication of the Empire State Building as one of the "Top Ten Civil Engineering Monuments of the Millennium," and to commemorate the 150th Anniversary of ASCE.

The 17"x40" poster is available at a price of \$20 for ASCE members, and \$25 for non-members (10% discount for orders of 10 or more post-

Section Profiles

Walter J. DeLury, Jr., P.E. Director

Walt has been a member of the ASCE since 1995. He is currently Vice President of KCI Technologies, Inc., downtown Philadelphia and Bensalem, PA offices. He is also a member of NSPE and ASHE. He is active in numerous community associations in his Frankford neighborhood and he serves as the Treasurer of the Historical Society of Frankford.

Carol C. Martsolf, P.E. Director

Carol Martsolf, graduated from Temple University in 1992, is Past President of the Younger Member Forum and is currently on the Section's Board of Directors. She is a Transportation Engineer at Parsons Brinckerhoff. She received the 1999 Zone I and National Daniel W. Mead Prize for Younger Members and the 1999 Philadelphia Young Civil Engineer of the Year award. She also was a finalist for 2000 and 2001 Delaware Valley Young Engineer of the Year. She continues to serve in an active role not only in ASCE, but the Engineers' Week Council, Women's Transportation Seminar (WTS), and various community and service organizations.

Gerald Donnelly President, Reading Branch, Phila. Section Director

Gerald Donnelly is a registered Professional Engineer in 15 states, and an ASCE member since 1985. A native of Scotland, he received his degree in Civil Engineering from the University of Paisley in 1983. He began his professional career with Ward, Ashcroft and Parkman, a transportation consulting firm in Liverpool, England. Soon after, he emigrated to the United States and joined STV Incorporated, the firm that he had spent two previous co-op terms with in 1981 and 1982. During the 18 years he has been with STV, Gerry has progressed from Junior Engineer in the Civil/Structural Department to leader of the Site Development Group and other roles. Gerry is presently Vice President and Operations Manager of STV's Environmental Region. He has been an active member of ASCE and is the current President of the Reading Branch. He lives in the Reading area with his wife Jane and their three children. Gerry has been active in his community as a youth soccer coach and board member of his local club for over 10 years.

ers), plus shipping. The 3 3/4"x 9" folded notecards are available in packages of 5 at \$8 for ASCE members, and \$10 for non-members, plus shipping.

To order, or to get additional information, please contact Maria Grazia Bruschi at posteresb@cs.com.

RESOLVE TO ATTEND AT LEAST ONE SECTION MEETING OR FUNCTION THIS YEAR AND INVITE YOUR ASSOCIATES!!

JOIN THE SECTION'S TECHNICAL GROUPS

Construction

Brian Stover, P.E., Chairman
Urban Engineers, Inc.
530 Walnut St., 14th Floor
Philadelphia, PA 19106
(215) 922-8080

Structural

Dr. Mohiuddin (Ali) Khan, P.E., Chairman
Manager, Bridge Division
STV Incorporated
820 Bear Tavern, Suite 105
Trenton, NJ 08628
(609) 530-9618

Transportation

Chris L. Rood, P.E., Chairman
DMJM+HARRIS
126 Franklin St.
Riverside, NJ 08075
(856) 461-9565

Engineering Management

Dennis M. MacBride, P.E., Co-Chairman
HNTB Corporation
8 Penn Center, 7th Floor
1628 John F. Kennedy Blvd.
Philadelphia, PA 19103
(215) 568-6500

William J. Mulloy, P.E., Co-Chairman
U.S. Army Corps of Engineers
Wanamaker Building
100 Penn Square East
Philadelphia, PA 19107-3390
(215) 656-6583

Delaware Valley Geo Institute (DVGI)

Craig R. Calabria, Ph.D., P.E., Chairman
GeoSystems Consultants Inc.
514 Pennsylvania Avenue
Fort Washington, PA 19034
(215) 654-9600

Allen W. Cadden, P.E., Liaison
Schnabel Engineering Associates, Inc.
510 East Gay Street
West Chester, PA 19380
(610) 696-6066

DMJM HARRIS

The People Who Get It Done

HIGHWAYS • BRIDGES • MASS TRANSIT
RAILROADS • AVIATION • PORTS & HARBORS
PLANNING • TRAFFIC & ITS
www.dmjmharris.com

The Atlantic Building
260 South Broad Street
Suite 1500
Philadelphia, PA 19102
(215) 735-0832

Pennsylvania Business Campus
201 Gibraltar Road, Suite 120
Horsham, PA 19044
(215) 674-1913
AN AECOM COMPANY

ROCTEST

Measuring up on all scales.

Geotechnical, Structural & In-Situ Testing Instrumentation
Sales, Rentals & System Integration

Tel.: 1-800-477-2506
Fax: (401) 633-6021
info@roctest.com
www.roctest.com

Pierre Gouvin
US Sales Manager
pgouvin@roctest.com

PLANNING & DESIGN OF SERVICE INTERCHANGES IN URBAN & SUBURBAN AREAS

Philadelphia, PA • March 21-22, 2002

Radisson Philadelphia, Twelve Caesars

4200 City Avenue, Philadelphia, PA 19131 • (215) 879-4000

FEE: ASCE members \$765; Non-members \$935

For full registration information contact: ASCE Continuing Education,
P O Box 79536, Baltimore, MD 21279-0536; Phone 1-800-548-2723; fax (703) 295-6144

IMPORTANT! 2001-2002 MEETING NOTICES

MARK YOUR CALENDAR NOW! The dates of the Philadelphia Section, ASCE monthly meetings and social functions, are as follows: (Check each upcoming edition of THE NEWS for additional details, possible date and topic changes.) THIS IS A TENTATIVE LIST.

ALL DINNER MEETINGS (except as noted):

Cocktails – 5:30 pm; Dinner – 6:30 pm; Meeting – 7:30 pm

Students: All dinner and/or luncheon are at discounted price. If you prefer, you are welcome to attend all meetings after dinner or luncheon, at no charge.

Thursday, April 18, 2002

Joint Dinner Meeting with Phila. Chapter, Penna. Society of Professional Engineers (PSPE) • Williamson's City Line, Philadelphia, PA • "CHOP Expansion" • Speaker: Anthony Kelly • Widener University Night • Past Presidents Night

Friday, May 3, 2002

Annual Spring Social Dinner Dance and Awards Presentations • Radisson Hotel, Philadelphia Northeast, Trevese, PA • Details to be announced. *NOTE CHANGE IN LOCATION*

THINK SPRING!

ANNUAL SPRING SOCIAL DINNER DANCE & AWARDS PRESENTATION

IN COMMEMORATION OF ASCE'S 150TH ANNIVERSARY

Friday, May 3, 2002 at Radisson Hotel Philadelphia Northeast, Trevese, PA

\$35.00 per person • More details in next month's edition of THE NEWS

MARK S. MAYHEW, PE
Regional Managers

BOB McANALLY, PE

TAYLOR WISEMAN & TAYLOR

ENGINEERING • SURVEYING • PLANNING
LANDSCAPE ARCHITECTURE

Doylestown, PA
(215) 230-7499

West Chester, PA
(610) 918-9200

ENTRY & P.E. POSITIONS AVAILABLE AT ALL LOCATIONS
WWW.TAYLORWISEMAN.COM



ANG ASSOCIATES, INC.

Consulting Engineers/Construction Managers

Design and Construction Services for:
Public and Private Facilities; Transportation;
Institutional; Educational; Industrial;
Commercial and Residential Projects

Penn Treaty Park Place Bldg. Tel: (215) 427-8700
1341 N. Delaware Ave., Suite 500 Fax: (215) 427-8710

a mentor/protégé partner of CSA Group
www.csagroup.com



Schnabel Engineering Associates, Inc. Geotechnical
Geosciences
Environmental
Construction Monitoring
Water Resources

Visit us at
http://www.schnabel-eng.com
or call (610) 696-6066, West Chester, PA
15 Office from New Jersey to Georgia

**YOUR BUSINESS CARD AD
SHOULD BE HERE!
CALL BOB WRIGHT
(215) 686-5538**

Ann M. Tomalavage, P.E., PMP
President

Malarkey Consulting, Inc.

Project Management Consulting
Environmental Consulting

(610) 326-0205
1429 Shaner Drive fax: (610) 326-0530
Pottstown, PA 19465 tomalava@netcarrier.com



TEMPLE UNIVERSITY

A Commonwealth University
College of Engineering
Civil & Environmental Engineering Dept.

Dr. Frederick C. Schmitt, P.E.

1947 N. 12th Street
Philadelphia, PA 19122
(215) 204-7724 Fax: (215) 204-6936



GeoSystems Consultants

Engineering, Earth Sciences and
Geotechnical Laboratory Testing

514 Pennsylvania Avenue Telephone: 215-654-9600
Fort Washington, PA 19034 Fax: 215-643-9440
www.geosystems.com

"Grant me today the simplicity of
childhood, the enthusiasm of youth,
the wisdom of maturity and the
gentleness of old age."