

the news



Address Service Requested
FIRST CLASS MAIL

FIRST CLASS
POSTAGE PAID
PERMIT NO. 130
CONCORDVILLE
PA 19331

PHILADELPHIA SECTION
AMERICAN SOCIETY OF CIVIL ENGINEERS

P. O. Box 58186, Philadelphia, PA 19102-8186

Electronic Message Hotline: 1-800-461-4190 (24 hours a day)

Web site: <http://www.asce-philly.org>

National ASCE Central Number 1-800-548-ASCE • Toll Free

The Sidney Robin Memorial Newsletter of the Philadelphia Section ASCE

Vol. 77-2

Our 91st Year

October 2004

OCTOBER JOINT DINNER MEETING

Philadelphia Section, American Society of Civil Engineers,
Younger Member Forum, Philadelphia Section, and
Construction Management Association of America, Mid-Atlantic Section

THURSDAY, OCTOBER 21, 2004

THE UNION LEAGUE • 140 South Broad Street, Center City Philadelphia
Cocktails - 5:30 p.m. • Dinner - 6:30 p.m. • Meeting - 7:30 p.m.

SUBJECT: The Cira Centre

PEAKERS: Anthony Ziccardi, Brandywine Realty Trust, and Craig Bryson, Pennoni Associates, Inc.

RESERVATIONS MUST BE SUBMITTED BY FRIDAY, OCTOBER 15. Please send your check for the number of attendees at \$30 per member or guest, \$15 per ASCE Student Member. Checks should be made payable to "Philadelphia Section ASCE" and sent to ASCE, PO Box 58186, Philadelphia, PA 19102-8186. Reservations can also be made on the Electronic Message Center, 800-461-4190, or via e-mail at info@asce-philly.org.

SPECIAL FEATURE — Drexel University Night. The ASCE Student Chapter, Faculty and Alumni of the Department of Civil, Architectural and Environmental Engineering of Drexel University will be honored at this meeting. All Students, Faculty and Alumni are cordially invited to participate.

If you have been to the 30th Street Station area of West Philadelphia lately, you have most likely seen the steel structure rapidly rising above the former parking deck on the north side of the Station. The under-construction **Cira Centre** will become the newest addition to the city's skyline and the first new skyscraper in many years west of the Schuylkill River.

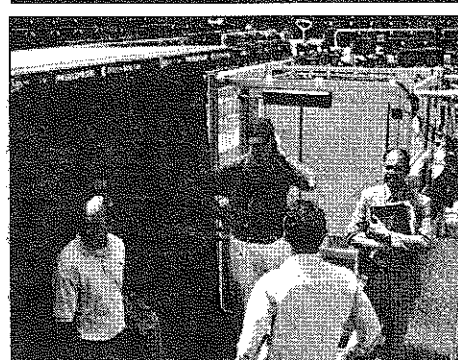
Anthony Ziccardi of Brandywine Realty Trust, the owner/developer of the Centre, and **Craig Bryson** of Pennoni Associates, the project design consultant, will introduce you to this unique structure. The Centre will feature an architectural flair, diverse facilities and a direct overhead connection into 30th Street Station, the hub of local rail transportation. Messrs. Ziccardi and Bryson will also discuss the many challenges of a building on a very constrained site, overtop the electrified tracks of the busy Amtrak Northeast Corridor. Learn more about the changing face of West Philadelphia. Plan to attend this exciting presentation.

Anthony Ziccardi has worked in building development and real estate since 1972. He is a former Partner at Linpro and Division President at K Hovnanian. In the five years that he has been with Brandywine Realty Trust, Tony has worked on a number of renowned projects, including the Christina Gateway in Wilmington, Delaware, Greentree in Marlton, New Jersey, and numerous residential projects. Tony is a graduate of St Joseph's University. He also received a Masters Degree from Fordham University.

Craig Bryson has worked in landscape architecture and site design since 1992. In his service with Pennoni, Craig has assisted a number of prominent clients, including Vanguard, CVS Pharmacies and First Union Bank. Craig is a registered landscape architect and a graduate of West Virginia University.

REMINDER - ASCE NATIONAL CONFERENCE

The Civil Engineering Conference and Exposition (ASCE's annual National Convention) will be conducted from October 20 through 23 at the Baltimore Convention Center. More information will be coming your way from National on this event.



Tourguide John Stranix (with cap) and ASCE, Phila. Section Past President Ruben David lead the tour onto the field.

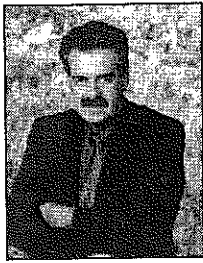
TOUR OF PHILLIES CITIZENS BANK PARK

By Christopher Wright

On **Thursday, July 29, 2004** several ASCE, Phila. Section members took part in an exclusive tour of Citizens Bank Park, the Phillies new ballpark, in South Philadelphia. The tour was sponsored by the ASCE, Philadelphia Section and organized by **Ruben David**. Tour participants were guided by **John Stranix**, Project Executive for the Phillies, and the construction management team of John F. Driscoll Co. and Hunt Construction Group.

The tour began at the media bays where television and cable companies link their broadcasting vans to the ballpark's cameras and televise the action. From there, attendees were treated to a walk in the outfield (and yes — it is real grass), through the team locker room, state-of-the-art weight and training area, team dugout, indoor batting cages, and post-game press conference room.

(Continued on Page 9)



PRESIDENTS' MESSAGE

As we look forward to the upcoming year, there are many thoughts that run through my head on the current climate within our profession, the challenges that we face in the future, and the many accomplishments that we make. In each of my messages to you this year, I am going to highlight a challenge and an accomplishment that Civil Engineers have made. We should take the accomplishments as incentives for each of us to make a difference, and look at the challenges as opportunities for each of us to make a difference.

The first accomplishment that I want to recognize occurred a couple of years ago in New York City and Washington DC after the tragedy of 9/11.

Many of our peers stepped up and volunteered to help in the recovery and rebuilding efforts at the World Trade Centers and the Pentagon. This was not an issue about being paid, or gaining notoriety, but was a gesture of the heart and soul of the Engineer. Many of us know personally many of the people that were asked to help and did so without giving a second thought. We also know many that were told thank you for offering, but the demand for help was not as high as the volunteers that stepped forward. Kudos to the Civil Engineer!

The major challenge that we face right now is gaining the respect that Civil Engineers deserve. The obstacle that we face comes from within. We are a people serving profession, and will put the needs of the important work that we do in front of the recognition that is deserved. You may say that this is not an issue, as you are happy with the way things are, but I say that to attract the best and the brightest into our profession, to allow for innovation and creative thinking in the things that we plan, design and construct, we are cheating ourselves if we do not promote the profession.

As for your Section, we will be working very hard to improve the services that we provide to our members. I unfortunately informed the Board that the pay increases for this year were cancelled, but I expect them to work even harder than they did last year, if that is possible. The goal I have set for the Technical Committees is to develop a Charter that includes a mission and goals, to provide the membership with educational opportunities. **Ruben David** is planning on events that will heighten awareness of our section and ASCE to our government leaders, and the Younger Members Forum and I will be visiting each University that has an ASCE Student Chapter this year.

We need your help and support. Get involved! Contact a Board Member and ask how. Be a part of the success that we continue to achieve.

Sincerely,
Brian A. Stover, P.E.
President - Philadelphia Section, ASCE

TENTATIVE SECTION MEETING SCHEDULE 2004-2005 SEASON

MARK YOUR CALENDAR NOW! The schedule for the Main Philadelphia Section, ASCE meetings for the upcoming season has just started to take shape. Many interesting topics and speakers are being considered. At this time, the details are not all finalized, but we would suggest that you mark the following dates in your calendar as "ASCE Meetings". Details will be provided in the next edition of THE NEWS.

Please keep in mind that this information, as always, is to the best of our knowledge at press time, but it is also TENTATIVE and subject to future change.

ALL DINNER MEETINGS (except as noted): Cocktails - 5:30 pm; Dinner - 6:30 pm; Meeting - 7:30 pm. All dinner and/or luncheon meetings have discounted prices for students. In addition, all are welcome to attend meetings without having the meal, at no charge.

Wednesday, December 8, 2004	Joint Meeting with Society of American Military Engineers, (SAME), Philadelphia Post • (location to be determined)
Wednesday, January 19, 2005	Joint Meeting with American Society of Highway Engineers (ASHE), Delaware Valley Section, and ASCE, Reading Branch • Radisson Valley Forge
Thursday, February 17, 2005	Joint Meeting with ASCE South Jersey Branch • (location to be determined)
Thursday, March 17, 2005	Joint Meeting with Women's Transportation Seminar, Philadelphia Section • Union League
Thursday, April 21, 2005	• Union League
Friday, May 6, 2005	The Annual Spring Social and Dinner Dance at the Sugarloaf Conference Center in Chestnut Hill.

This schedule will be updated and repeated in THE NEWS throughout the coming season.

SECTION WEB SITE!

Our Section's web site has taken on a new look! Check us out at www.asce-philly.org. Make sure you bookmark this site to check on our latest meetings and events, links and much more: Comments and/or suggestions? Please contact us either via our Electronic Message Hotline at 1-800-461-4190 (24 hours a day) or e-mail at info@asce-philly.org.

PHILA. SECTION, ASCE OFFICERS 2004-2005

PRESIDENT

Brian A. Stover

PRESIDENT-ELECT

Christopher J. Menna

VICE PRESIDENT

Carol C. Martsof

SECRETARY

Kristen Bowman Kavanagh

ASSISTANT SECRETARY

Jennifer Walsh

TREASURER

David C. Hanly

ASSISTANT TREASURER

Mark N. Washington

MEMBERSHIP SECRETARY

Thomas W. Brady

DIRECTORS

Frank Falcone Anthony Kelly
James Markham Michael D. Petner
Mark Tiger Christopher W. Wright
Gerald Donnelly (Reading Branch)

PAST PRESIDENTS

Chris L. Rood
Ruben D. David
Allan F. Moore, Jr.

President - Brian A. Stover, P.E.
Senior Vice President
Urban Engineers, Inc.
530 Walnut Street, 14th Floor
Philadelphia, PA 19106
(215) 922-8080
Email: bastover@urbanengineers.com

Secretary - Kristen Bowman Kavanagh, P.E.
Project Engineer
Flow Science, Inc.
1500 Kennedy Blvd.
2 Penn Center, Suite 200
Philadelphia, PA 19102
(215) 854-6445
Email: kbkavanagh@flowscience.com

PUBLICATIONS COMMITTEE

Interim Editor of THE NEWS

Robert Wright

Staff Writers

James Markham Joe Symrick

SEND COPY TO:

ASCE News
P.O. Box 58186, Philadelphia, PA 19102-8186

**COPY DEADLINE FOR
NOVEMBER 2004 ISSUE
OCTOBER 22, 2004**

SPECIAL INFORMATION FOR LIFE MEMBERS (AND LIFE MEMBERS-TO-BE)

There have been some recent changes to the ASCE Bylaws relative to Life Membership. You may have received this information from ASCE National over the summer.

As you may know, Life Members are exempt from annual dues payments and need only return their annual renewal form to retain their ASCE membership. If Life Members choose, they can pay a \$30 service charge annually to receive *Civil Engineering* magazine and *ASCE News*. Alternatively, Life Members may pay a single \$300 fee and receive membership publications for the remainder of their Life Membership.

Historically any ASCE member that made a lifetime commitment to ASCE and the profession by paying dues annually for the duration of their professional career would qualify to become a Life Member. This concept has not changed though details of its implementation have. The minimum age to become a Life Member has not changed from 65.

With the recent change in the Bylaws, however, each member must now pay dues for 30 years with the last 10 years of dues paid consecutively prior to age 65.


Special programs have been developed for members that retire prior to age 65, become unemployed or are disabled. These special programs insure that all members have a fair and equal opportunity to achieve Life Member status.

Please contact ASCE National's Member Services Department if you would like to discuss the new rules or if we may bring greater benefit to your membership. We look forward to hearing from you and to you becoming an ASCE Life Member.

PRECARIOUSLY, LOOSELY RELATED (MAYBE), TO ENGINEERING TRIVIA

There are several exhibits in museums around the country this summer which highlight the Titanic. One of them is at our own Franklin Institute.

If you have seen the exhibit or read much about the Titanic, you are aware that it boasted many new and innovative wonders for its time. Among these was the brand new flooring material used extensively in the luxurious ballrooms, dining halls and other areas of the ship. This miracle material could stand up to the abuse of large crowds, furniture, stains, and the damp, salty environment. Its use on the Titanic marked the first installation of this material anywhere. The miracle material? Linoleum.



ZENgineering

Misquote can't prevent failures.
Above your vision.

NTI Consultants, Ltd.
Infrastructure Engineering
and Environmental Services

810.524.2300
www.nticonsultants.com

MEMBERS IN THE NEWS

Guthrie Joins Schoor DePalma

Robert J. Guthrie, P.E., P.P., joined Schoor DePalma in April to serve as a Vice President and manage the firm's Pennsylvania Transportation Department. Bob has more than 30 years of transportation engineering experience and is well versed in the planning, design, and coordination efforts required for major transportation projects.

In his new position at Schoor DePalma, Guthrie will be responsible for client satisfaction, ensuring on-time and on-budget projects as well as the expansion and enhancement of Schoor DePalma's transportation engineering services from the firm's Philadelphia office.

Bob's professional and community involvement in the greater Philadelphia region includes: member and past chairman for the March of Dimes Transportation, Building and Construction Committee in Southeastern Pennsylvania; past president and former member of the Board of Directors of the American Council of Engineering Companies in Philadelphia; former member of the Board of Directors of the American Society of Military Engineers Philadelphia Post; member of the Delaware Valley Section of the American Society of Highway Engineers, and Section Member. He has received numerous honors and awards, including the prestigious WTS Philadelphia Award in 2000. He was the Section's 2002 Engineering Manager of the Year.

Chuck Pennoni Elected as ASCE Foundation President


Past National and Section President C.R. "Chuck" Pennoni became the President of the ASCE Foundation on July 25, 2004. The Foundation's Board of Directors elected Chuck to a three-year term as President. He is the third President in the ten-year history of the Foundation.

As you may know, the Foundation assists ASCE with resource development and the enhancement of its programs through the philanthropy of its membership and the wider public. The Foundation's mission is to generate continued resources for the Civil Engineering profession.

The Section wishes Chuck good luck in his latest endeavor to help ASCE and the Civil Engineering profession.

Be careful about reading
health books.
You may die of a misprint.

— Mark Twain



Craig R. Calabria, Ph.D., P.E.
Arthur H. Dwinoff, Ph.D., P.E.
Ram D. Singh, Ph.D., P.E.

GeoSystems Consultants, Inc.
Engineering, Earth Sciences and
Geotechnical Laboratory Testing

514 Pennsylvania Avenue
Fort Washington, PA 19034
Telephone: 215-654-9600
Fax: 215-643-9440
www.geosystems.com

Dr. Traver's Innovative Drainage Methods Cited

ASCE, Philadelphia Section Member and Villanova Professor **Dr. Robert Traver** was featured in an article in the *Philadelphia Inquirer* on July 14, 2004 in response to his methods on drainage in light of the so-called 1000 year storm parts of our area experienced on July 12, 2004.

The article noted that "Traver is an associate professor of civil and environmental engineering at Villanova [University]. His mission: to make rain behave as it did in the days before we blanketed the suburbs with asphalt and concrete. Traver and his colleagues are conducting four experiments on campus, each designed to limit the impact of stormwater runoff, which cascades off roads, buildings and parking lots, eroding stream banks and carrying a toxic payload of motor oil and road salt."

Rob has set up what the article described as a "giant sponge" of black chokeberry, switchgrass and other hydrophilic plants in a four-foot deep mixture of sand and soil within one of Villanova's parking lots. Other test areas around the campus feature porous concrete, a man-made wetland, and an infiltration trench.

Rob got a second round of kudos for his natural drainage methods and research in the *Inquirer* on August 2, 2004 after the heavy rains over the July 31-August 1 weekend.

Syrnick Elected President of Engineers Club

ASCE, Phila. Section Past President and Past District Director **Joe Syrnick** was installed as the 111th President of the Engineers Club of Philadelphia on May 1, 2004. Joe will serve as President for a two-year term. Congratulations to Joe on this honor!

Other Section members who serve on the Club's Board include First Vice President **Ruben David**, Second Vice President **Eric Flicker**, and Directors **Pat Dougherty**, **Carol Martsof**, **Mike McAtee** and **Chris Menna**.

Bowman Adds Kavanagh

Section Secretary **Kristen Bowman** married **Bill Kavanagh** in a ceremony at the Cathedral of Saints Peter and Paul in Center City on June 12, 2004. (You will notice elsewhere in this issue that Kristen has added Bill's last name to hers.) Bill is an architect at Timothy Haahs & Associates of Blue Bell, a firm led by Section Member **Tim Haahs**. We wish the newlyweds well, and we hope that the inevitable finger-pointing and blame-assigning that occurs when engineers and architects attempt to work together is minimal!



FROM THE ANNALS OF THE SECTION'S HISTORY... SECTION PRESIDENTS

As reported on these pages, Brian Stover was recently inducted as the Section's 92nd President. Or was he? There is no doubt that he was installed, but is he the 91st or 92nd? This is a mystery. Why? (We're engineers - we should be able to count! Or we should at least be able to find an architect or two who can count for us...!?)

Although the Section President serves in this position for a one-year term, it is actually part of a six-year commitment. (*Editor's note - keep this in mind in case anyone ever asks you if you want to be the Section President!*) At one time, the order of ascendancy went from 2nd Vice President to 1st Vice President to President, meaning that a candidate was elected to the 2nd Vice President spot and then automatically rose to the Section Presidency accordingly. After the one-year term of service as President, the person remains on the Section Board for three years as a Past President.

This arrangement changed in 1990 when the Section's Constitution and Bylaws were revised, and the titles were revamped to more closely parallel National's setup. Thus, the 2nd Vice President became the Vice President and the 1st Vice President became the President-Elect. Technically, there is no automatic progression from the Vice President spot to the President-Elect position, but this has been the traditional order.

So why is there any mystery? A check of the list of Section Presidents, shown later in this article, reveals that 91 individuals have served in this position over the 92 years of the Section's existence. In 1944-45, **Francis Friel** was Section President and he remained on for a second term (1945-46). He was the only person to serve more than one term. This could have possibly been related to the World War II efforts, which had many people doing many different things, but we have not been able to find out for sure. (If anyone out there knows more about this, we'd be interested to learn more!). Thus, technically, Mr. Friel was both the 32nd and 33rd President of the Section.

To set the record straight with single-year terms, then by the decree of the 81st President (this author), **Brian Stover** is our 92nd President. We'll leave any further debate on this topic to others as a possible table discussion at a future Section meeting?!

Since we've mentioned this, to satisfy your curiosity, here is the handy-dandy all-time list of Section Presidents for your reference.

1913-14	George S Webster
1914-15	Richard L Humphrey
1915-16	Edward B Temple
1916-17	Samuel T Wagner
1917-18	Henry H Quimby
1918-19	F Herbert Snow
1919-20	S M Swab
1920-21	John Meigs
1921-22	Benjamin Franklin
1922-23	William Easby
1923-24	Harrison W Latta

1924-25	Charles H Stevens
1925-26	Henry J Sherman
1926-27	Clark Dillenbeck
1927-28	Charles A Emerson
1928-29	A Zane Hoffman
1929-30	Robert Farnham
1930-31	William R Scanlin
1931-32	James W Follin
1932-33	C E Myers
1933-34	Sanford W Sawin
1934-35	Isaac S Walker
1935-36	Charles S Shaughnessey
1936-37	Berthold F Hastings
1937-38	William H Chorlton
1938-39	William Doherty
1939-40	Scott B Lilly
1940-41	Harry M Freeburn
1941-42	Charles A Howland
1942-43	Julius Adler
1943-44	Howard T Critchlow
1944-45	Francis S Friel
1945-46	Francis S Friel
1946-47	Lester L Lessig
1947-48	Howard K Preston
1948-49	Edwyn L Shoemaker
1949-50	Neville C Courtney
1950-51	Oliver W Hartwell
1951-52	Samuel S Baxter
1952-53	Joseph A Schulcz
1953-54	Samuel T Carpenter
1954-55	Joseph R Farrell
1955-56	Blair Birdsall
1956-57	Victor G Thomassen
1957-58	John H Ferguson
1958-59	Harry B Vaughan
1959-60	Alfred A Estrada
1960-61	John J Gallen
1961-62	William Padlasky
1962-63	Sidney Robin
1963-64	Ranald V Giles
1964-65	Joseph R Farrell Jr
1965-66	Richard Z Zimmerman
1966-67	Frank R Rennis
1967-68	Milton W Rothbaum
1968-69	Richard deCharms
1969-70	James W McPhillips
1970-71	John E McCall
1971-72	Lawrence M Moy
1972-73	Bruno J Talvacchia
1973-74	Robert O Drange
1974-75	Alfred O Quinn
1975-76	Robert M Koerner
1976-77	Will M Heiser
1977-78	Brian J Lewis
1978-79	C R Pennoni
1979-80	Kenneth J Zitomer
1980-81	Joseph R Symick
1981-82	Frederic Roll
1982-83	Bernard M McNamee
1983-84	William M Malarkey
1984-85	John E Durrant
1985-86	Ira N Pierce
1986-87	Albert M Tantala
1987-88	Norman G Weintraub
1988-89	Susan K Lior
1989-90	J Richard Weggel
1990-91	Frank J Depman

1991-92	Moustafa A Gouda
1992-93	Klaus K Fuelleborn
1993-94	Robert M Wright
1994-95	William T Thomsen
1995-96	William G Richards
1996-97	Alvin Zion
1997-98	Darin L Gatti
1998-99	Sandra J May
1999-2000	Faruq M A Siddiqui
2000-01	Thomas J Branigan
2001-02	Chris L Rood
2002-03	Ruben D David
2003-04	Allan F Moore Jr
2004-05	Brian A Stover

You might note that the first person to hold this esteemed title was **George Webster**, who was at the time the Chief Engineer and Surveyor of the City's Public Works Department. (Two of his successors in this position, **Jim McPhillips** and **Joe Syrnick**, also served as Section Presidents.)

The second President, **Richard Humphrey**, left the Section what would eventually become our annuity, which to this day still funds many of our programs.

There are some other notable names on this list. The 9th President, serving in 1921-22, was **Benjamin Franklin**, obviously not the famous one but he could be related (we don't know). A few went on to hold elected office in ASCE National (among them Messrs. **Humphrey, Friel, Baxter, Pennoni, Syrnick, Durrant** and **Gouda**).

So far, we have had two women Section Presidents (**Susan Lior** in 1988-89, **Sandra Ma**, in 1998-99). You can do the math and find that this is a little over 2%. Based on trends in our field, there will certainly be more in the future!

NEW DISTRICT DIRECTOR ELECTED

Peter A. Terry, P.E. has been elected to the position of District 4 Director. District 4 encompasses four Sections and two Branches in the state of Pennsylvania (Central Pennsylvania, Lehigh Valley, Philadelphia and Pittsburgh Sections, Northwest Pennsylvania and Reading Branches). Peter will succeed the current Director, **John "Fred" Graham**, whose term expires in October. The transition will take place at the National Conference in Baltimore.

Peter is the president of Benchmark Civil Engineering Services, Inc. of Allentown. He is a graduate of Lehigh University (B.S.C.E.) and Villanova University (M.C.E.). He has been employed in both public sector and private sector positions and has served as adjunct faculty at both Lehigh University and Lafayette College.

He is a Registered Professional Engineer and a certified Professional Traffic Operations Engineer. He served on the Lehigh Valley Section ASCE Board of Directors for seven years and was elected to Section President in 1997. He additionally handled the duties of the Section's 150th Anniversary Champion. He is also a member of the Institute of Transportation Engineers and the Transportation Research Board.

SCOPE? WHAT SCOPE?

By Ann M. Tomalavage, P.E., P.M.P.

When I was four years out of college, I took a job with a consulting engineering firm. Prior to that, I'd worked for a large chemical company, a government agency, and a research firm. One of my first projects at the consulting firm involved developing several alternatives for treating dye wastewater. Our scope included some bench tests to characterize the wastewater, evaluating four viable treatment alternatives, high-level costing for each, and a report with recommendations.

One day the client called and asked me to look at an additional waste stream, and to evaluate some options for treating this stream separately or mixed in with the original wastewater. Being the eager-to-please, naïve engineer I was, I said, "Sure! No problem!" I charged my time and the extra analyses accordingly. I was very surprised when the project manager came to me and asked why we were over the budget.

Luckily for my company, we were able to bill for that additional work, and the client paid for it. But it taught me several lessons:

- Every project has a scope. The scope is the "boundary" of the project. It means, "we are doing this, and we are not doing that."
- Expanding the scope of a project is, well, not exactly inevitable, but it's not unusual. Clients often think of additional things to be done, "so why not do them as part of this project?"
- Nobody likes surprises. My project manager was surprised. Our accounting department was surprised. The client was surprised when he saw the bill, because I hadn't told him how much this additional work would cost.

If I could hit the rewind button, here's what I'd do differently: I'd stop and tell the client that I'd be very happy to do this additional scope. But first I'd like to estimate how much additional time and/or money it would take to accomplish it. Then the client could decide whether s/he wanted to do it now, later, or not at all.

The key to having a manageable scope is this: in order for me to know whether something is a change in scope, I have to know what the scope is. Let me repeat that: in order for me to know whether something is a change in scope, I have to know what the scope is. In other words, I have to have a project plan, the client needs to agree to that plan, and everyone on the project team needs to understand what's in scope and what's out of scope.

Next time you're on a project that seems to have no end, check the scope and see how far out of bounds you are.

Mrs. Tomalavage is a member of ASCE and President of Malarkey Consulting, Inc.

**Make no little plans.
They have no power
to stir men's blood.**

*Daniel Burnham
Noted Architect*

SPEC NUMBERS TO CHANGE

By Frederick Baumert, P.E.

There is a major change on the way in 5-digit number system used to index project manuals, but many in the construction industry are not aware of it. Here is an overview of what you need to know.

Once upon a time, every design office and government agency had its own specification system. Some described work by trade, others by assembly, and each had a different amount of detail in the requirements. No two office specifications looked alike. Naturally this drove contractors crazy. There had to be a better way. Shortly after WWII, some practitioners got together to start sharing information about putting together project specifications, and CSI (the Construction Specifications Institute) was born. One of its early acts was to create a framework to bring order to specifications. A joint effort of CSI, AIA, and the federal GSA resulted in MasterFormat, which is the 5-digit numbering system that is commonly used today. Every aspect of general building construction was covered with a specific number in the system. Hence we have concrete in Division 03 (e.g. Section 03300), metals in Division 05 (05120 – structural steel, 05310 – steel deck), and so forth. There are 16 Divisions in the current (1995 version) MasterFormat.

However, many organizations have found those 16 Divisions to be too confining, and have added their own Division 17 or even 18 to add specifications for process equipment, tele-data systems, and other parts of construction that do not neatly fall into the current MasterFormat. Heavy civil work in particular (dams, highways, power plants, etc.) often completely ignores MasterFormat.

Two years ago, the major stakeholder organizations agreed to do something about the situation. CSI, AIA, CCS (Construction Specifications Canada), GSA, DOD, and many other organizations began overhauling MasterFormat. There were four major proposals evaluated, and consensus was achieved late last year on a new 50 Division system, named MasterFormat 2004 (MF04).

And yes, ASCE was one of the organizations that participated in the process.

The good news is that Divisions 03-14 are largely unchanged as far as content. The bad news is that MF04 uses a 6-digit numbering scheme, so all your catalogues and specification masters will be out of date soon. The added digit is not simply tacked on the end, it actually is inserted in the middle. The first two digits are the Division number (the 05 of 05120) as before. The level two digit (the 1) becomes two digits (10). Levels 3 and 4 (the 2 and 0 respectively) are combined as level 3 (20). So the new structural steel section number might appear as 051020 (final numbering of the sections has not been released yet). This change will greatly increase the "capacity" of each division to further differentiate materials and assemblies.

Other changes: Division 02 is broken up, and all the civil work is moved to Divisions 30-35; demolition and protection remain in 02. Divisions 15 and 16 are spread over new Divisions 21-28. And all the process equipment that went into the infamous Division 17 now has an official home in Divisions 40-45.

So when will we start using MasterFormat 2004? Publication is scheduled for late this year. Early adopters include McGraw-Hill, Sweets, BSD, and MasterSpec, so you will see the references changed in next year's catalogues, magazines, and reference materials. Naturally it will take some time for the entire industry to catch up, but the change is on its way. To learn more and to keep up with the publication progress, you may visit the CSI website www.csinet.org and click on Technical in the navigation bar.

Mr. Baumert is a member of ASCE and CSI, and is a principal at Keast & Hood Co.

**Only Irish coffee provides
in a single glass all four
essential food groups:
alcohol, caffeine, sugar and fat.**

— Alex Levine

Baker

Michael Baker Jr., Inc.

204 Gibraltar Road Suite 120 Horsham, PA 19044 Ph: 215.555.0868	301 College Road East Princeton, NJ 08540 Ph: 609.734.7940	1618 Market Street Suite 3005 Philadelphia, PA 19103 Ph: 215.568.0539
--	--	--

ChallengeUs.

Peirce Engineering, Inc.

Civil – Construction Engineering

John J. Peirce, P.E. & Jennifer L. Peirce, P.E.

3736 Stoughton Road, Collegeville, PA 19426
Phone: (610) 489-1163 Fax: (610) 454-7741
Email: PeirceEngr@aol.com

Nave Newell

Where Ideas Get Down To Earth.

SPECIALIZING IN LAND DEVELOPMENT
& FACILITIES ENGINEERING SERVICES

Land Planning and Landscape Architecture
Surveying and Construction Stake Out
Civil & Structural Engineering

Gregory C. Newell, P.E. Principal	357 S. Gulph Road Suite 300 King of Prussia, PA 610/265-8323
--------------------------------------	---

www.navenewell.net

kmj
consulting, inc.

Karen Jehanlian, PE
President

P: 610-896-1996	355D Lancaster Avenue
F: 610-896-8002	Haverford, PA 19041-0157
E: kjehanlian@kmjinc.com	www.kmjinc.com

THE 2004 SPRING SOCIAL

On Friday, May 7, 2004, the Section conducted its **Annual Spring Social and Dinner Dance** at the Sugarloaf Conference Center in Chestnut Hill. Close to 90 Section members, spouses and guests were in attendance as the ASCE, Phila. Section closed its 90th anniversary year.

The event included the traditional induction of new Officers and Board Members. Former ASCE District 4 Director and Section Past President **Joe Syrnick** presented the oath of office to the new officers as well as those completing the second years of their terms.

Outgoing Section President **Allan Moore** presented a brief overview of his successful year. He thanked the Section Board and officers for their support and assistance before handing the gavel to the incoming President, **Brian Stover**.

As in the past, the Section's top awardees in the **Delaware Valley Science Fair** were invited to attend the Social and display their winning projects. Both were able to attend, and special recognition was given to them — **Alex Braccio**, a 7th grade student at Indian Valley Middle School (Grades 6-8 winner) and **Laura Penna**, a junior at Delran High School (Grades 9-12 winner).

The Section Awards for 2004 were also a highlight of the evening. This year, six Phila. Section, ASCE Award recipients were cited, mainly through the audiovisual show that has become a Section standard. Information on each of the awardees follows.

Philadelphia Civil Engineer of the Year

This year, the Section's highest honor, the Philadelphia Civil Engineer of the Year, was awarded to **Dr. John McElroy**. John is a Senior Associate with Langan Engineering at the firm's Center City office, where he directs the Geotechnical Group. He has been with Langan since 1984. His duties include responsibility for design, instrumentation, monitoring and evaluation of preconstruction surcharges, excavation support, subgrade preparation evaluation, soil improvement for shallow foundation support, pile driving, and drilled pier installation. John has been a part of numerous local projects including the Tower Center development on the former Sears site in Northeast Philadelphia, the Lockheed Martin complex in Newtown, and several efforts on Penns Landing.

John received his Bachelors degree in Civil Engineering from Drexel University in 1977. He returned to Drexel to earn both his Masters degree and his Doctorate in Geotechnical Engineering in 1979 and 1985 respectively. He has been an active member of ASCE's Metropolitan and New Jersey Sections in addition to our own Section and is involved in several other professional societies. John, his wife Mary Kay, and their two children reside in Haddonfield, New Jersey.

Philadelphia Young Civil Engineer of the Year

Michael McAtee was the recipient of Young Civil Engineer of the Year honors. Mike is a Project Engineer in the Bridge Department at Ur-

ban Engineers, a position he has held for the past eight years. His duties include design of highway bridges, sign structures, structural rehabilitation, bridge inspection, and three-dimensional modeling of proposed structures. He has been part of the design team on several local projects, including the Pennsylvania Turnpike bridges across the Schuylkill River, the rehabilitation of the SEPTA concrete arch bridge in Manayunk, and a feasibility study for the proposed widening of a portion of the Northeast Extension of the Turnpike from Plymouth Meeting to Lansdale.

Mike received his Bachelors degree in Civil Engineering from Villanova University in 1995. He is a member of the American Society of Highway Engineers and the Engineers Club of Philadelphia in addition to ASCE. He has been active in several committees in the Section and is the current president of the Section's Younger Member Forum. In February he was cited as the Delaware Valley Young Engineer of the Year. Mike and his wife Ann are the proud parents of two young daughters. They live in Levittown.

Geotechnical Engineer of the Year

Dr. George Koerner was the award recipient this year. George is the Associate Director of the Geosynthetic Research Institute in Folsom, Delaware County. In this capacity, he is involved in the investigation and experimentation in geosynthetic materials, including fabrics, pipes and grids. The Institute is world-renowned in its expertise in the geosynthetic field, having been at the forefront of research and development in this area. George has played a critical role in the certification and accreditation of geosynthetic laboratories. He has worked with national standards and testing agencies to develop standard specifications and codes for these materials. Locally, he has worked on foundation and tieback projects for the Port of Wilmington and the Center City Commuter Rail Connection.

George received his Bachelors degree in Civil Engineering from Drexel University in 1985. He returned to Drexel to obtain his Masters degree in 1987 and his Doctorate in 1993. He is active in the ASCE Geo-Institute at both the national and local levels. George, his wife Jamie, and their two children live in Penn Valley.

Structural Engineer of the Year

This year, **Walter Sawruk** is the winner of Structural Engineer of the Year honors. Walt is a Senior Consultant with ABS Consulting at its office in Shillington, in the Berks County suburbs of Reading. He has been at this position for the past six years. His duties include engineering and consulting services related to blast-resistant design, seismic design, and other related specialty structural engineering services. Among the specialty services offered by his firm are counter-terrorism measures, vehicle barrier and protection systems, damage assessments, and vibration isolation and containment for sensitive equipment. He has offered his services in response to disasters in the aftermath of Hurricane Floyd in 1999 and the World Trade Center attack in 2001.

Walt started his engineering training with an Associate Degree in Applied Science from

Northampton County Area Community College in 1972. He returned to school to earn a Bachelors Degree from Penn State University in 1974, with a subsequent Masters in Structures from Penn State in 1986. He has been an active member of the Section's Reading Branch for many years and served a ten-year stint as the Branch's Newsletter Editor. Walt and his wife Carmela, who have three children, live in Shillington, Berks County.

Engineering Manager of the Year

Gerald Donnelly was cited as this year's recipient. Since 1983, Gerry has been with STV Incorporated in Douglassville. He has risen to the position of Vice President and Manager of the firm's Energy and Communications Division. He directs STV's pipeline services, telecommunications and site development groups. His duties include management of professional, technical and administrative staff, scheduling and budgetary control, proposal preparation and business development. He has been particularly involved in gas and oil pipeline projects in the eastern half of the United States. Locally, he has handled numerous pipeline replacement and relocation efforts for Sunoco, Colonial Pipeline and Peco Energy, and school building projects in Montgomery County.

Gerry received his Bachelors degree with honors in Civil Engineering from the University of Paisley in his native Scotland in 1983. He has been involved with the Section's Reading Branch for many years and has served in his current capacity as Branch President for four consecutive terms. Gerry, his wife Jane, and two of their three children live in Exeter Township, Berks County.

Educator of the Year

The Section presented **Dr. Faruq Siddiqui** with this honor. Faruq is a Professor in the Engineering Department at Swarthmore College. He began his career at Swarthmore in 1982 as an Assistant Professor. He served as Chair of the Engineering Department from 1998 through last year. He has concentrated in courses in Structural Engineering, specifically in the areas of mechanics, structures and geotechnical topics. Additionally, he has been involved in research in the areas of finite element analysis, stress analysis, structural dynamics, and the development of computer-assisted design software.

Faruq received his Bachelors degree in Civil Engineering from the Bangladesh University of Engineering and Technology in Dhaka in 1976. He continued his training at the University of Pittsburgh, where he earned his Masters degree in Civil Engineering in 1979 and his Doctorate in Structural Mechanics and Structure Design in 1981. He has been the Faculty Advisor for the ASCE Student Chapter at Swarthmore for over twenty years and has successfully mentored many students. Although Swarthmore's program is relatively small, a high percentage of his students have gone on to graduate programs in several diverse areas. He served as Phila. Section, ASCE President for the 1999-2000 season and is active in several professional societies in addition to ASCE. Faruq and his wife Shahida, who is also a

(Continued on Page 7)

THE 2004 SPRING SOCIAL

(Continued from Page 6)

Civil Engineer, and one of their two daughters reside in Wallingford.

National Awards

Two recipients of Special Awards from ASCE National were cited. **Carol Martsof**, the Section's incoming Vice President, was presented with the **Zone 1 Citizen Engineer of the Year** award at the Zone 1 Conference in New York in March. **Christopher Menna**, the Section's new President Elect, was recognized as the **Zone 1 Young Government Civil Engineer**. Chris will receive this award from National at the National Conference in Baltimore in October.

Scholarships

The Section Scholarship program provides scholarships to incoming juniors and seniors in the Student Chapters of the Section's six colleges. This year's recipients were **Woleska Mora** of Drexel University, and **Emilly Maurer** and **Andrew Miller**, both students at Widener University. None of the three recipients were able to attend the Social.

Special Thanks

Special thanks are extended to those who helped make the Awards Program a success once again this year. This includes the Program Committee (**Tom Branigan, Ruben David, Sandra May, Carol Martsof, Chris Menna, Allan Moore, Chris Rood, Brian Stover, Michelle Webb** and **Bob Wright**), the Awards audio narrators, who once again gave up a nice spring evening to donate their voices to the effort (**Allan Moore, Ruben David, Carol Martsof** and **Bob Wright**), and the Awards Committee (**Sandra May, Carol Martsof, Brian Stover, Bill Thomsen** and **Bob Wright**).

And, of course, the Social could not have gotten off the ground without the energetic leadership provided by the coordinators of the event, Section Past President **Sandra May** and outgoing Section President **Allan Moore**, with the able assistance of Past President **Ruben David**. Helping this merry group in the festive decoration of the meeting room for the Social were **Rosemarie David, Kim Moore, Brian Stover, Bob Wright** and **Gail Wright**.

The tentative date for the **2005 Social** is **Friday, May 6, 2005**. Updates and additional information will be included in future issues of THE NEWS.

**McCormick
Engineers & Planners
Since 1946 Taylor**

Two Commerce Square, 2001 Market Street, 10th Floor
Philadelphia, PA 19103
Phone: 215-592-4200 • Fax: 215-592-0682
www.mccormicktaylor.com

NOVEMBER DINNER MEETING

Philadelphia Section, American Society of Civil Engineers

TUESDAY, NOVEMBER 16, 2004

THE UNION LEAGUE • 140 South Broad Street, Center City Philadelphia
Cocktails - 5:30 p.m. • Dinner - 6:30 p.m. • Meeting - 7:30 p.m.

SUBJECT: To Be Announced

RESERVATIONS MUST BE SUBMITTED BY THURSDAY, NOVEMBER 11. Please send your check for the number of attendees at \$30 per member or guest, \$15 per ASCE Student Member. Checks should be made payable to "Philadelphia Section ASCE" and sent to ASCE, PO Box 58186, Philadelphia, PA 19102-8186. Reservations can also be made on the Electronic Message Center, 800-461-4190, or via e-mail at info@asce-philly.org.

YOUNGER MEMBER FORUM NEWS

by *James Markham*
Forum Editor

Alyson Radel Lester, P.E.

2004-2005 President

Urban Engineers, Inc.
530 Walnut Street, 14th Floor
Philadelphia, PA 19106
(215) 922-8081
arlester@urbanengineers.com

The Younger Member Forum (YMF) membership includes college students, recent graduates and young engineers, including Registered Professional Engineers, who are 35 years of age or younger. The objectives of the group are: 1) to provide networking opportunities, 2) to interact with schools and the general public to promote civil engineering and 3) to enhance career development.

Young engineers or college students who would like to become part of the YMF and be added to the announcement list should contact **John Federico** of Urban Engineers, at secretary@ymfphilly.com or at (215) 922-8081. *There are no fees to join!*

Recent Accomplishments

The YMF sponsored a tour of the **Ben Franklin Bridge** on **September 16, 2004** and co-hosted a panel discussion with the Mid-Atlantic Section, Institute of Transportation Engineers (MASITE) on September 23, 2004. More details will be forthcoming in future issues of The News.

A meeting on the award-winning **German-town Avenue Bridge** will be held on Wednesday, **October 13, 2004**, at the Municipal Services Building, starting at 12:00 Noon. More information on this will be provided as details are finalized.

Member Spotlight

Don Gusic is a Project Engineer for Parsons Brinckerhoff in Center City. Don joined PB in 2000 as a co-op and stayed on full-time following his graduation from Drexel University in 2001. During his tenure at PB, Don has worked on various components of site and roadway projects such as geometry, drainage, erosion and sediment control, signing and streetscape. Don has served as Project Engineer on several major projects in the region including: Frankford Transportation Center; Harrisburg International Airport; and Market Street Elevated Streetscape. He is an active mem-

ber of ASCE and is currently serving on the Board of the Younger Members Forum as the Technical Groups Chair. A native of Martinsburg, West Virginia, Don currently resides in South Philadelphia with his fiancé Jackie, and their dog, Chaka. Don and Jackie are planning a November 20, 2004 wedding.

New YMF Officers

In May, after a superb run under 2003-04 President, **Mike McAtee**, the YMF held its 2004-05 elections at the Darkhorse Tavern. Please join us in welcoming the new Board:

Elected positions:

President - **Alyson Lester**, Urban Engineers
Vice President - **Jeremy Colello**, Parsons Brinckerhoff
Treasurer - **Kevin Aach**, Michael Baker Jr., Inc.
Secretary - **John Federico**, Urban Engineers

Appointed positions:

Assistant Secretary - **Joe Platt**, Traffic Planning and Design
Technical Groups Chair - **Don Gusic**, Parsons Brinckerhoff
South Jersey Liaison - **Jamie Phillips**, Master Builders
IT Chair - **Vince Chin**, Pennoni Associates
Professional Development Chair - **Dave Petrucci**, Pennoni Associates
Community Service Chair - **Catherine Chomat**, F. X. Browne, Inc.
College Contact Chairpersons - **Melissa Logan Gillespie**, Site Blauvelt, and **Kristen Scott**, McMahon Associates
Newsletter Editor - **Jim Markham**, Pennoni Associates
Outreach Coordinator - **AnnMarie Vigilante**, Urban Engineers

Mike McAtee will continue with the Board this year as the Past President.



DREXEL UNIVERSITY

Civil, Architectural & Environmental Engineering

Part-Time and Full-Time Graduate Study

Structural Engineering	Geosynthetics
Geotechnical Engineering	Infrastructure Systems
Architectural Engineering	Hydraulics, Hydrology & Water Resources
Environmental Engineering	

Dr. Charles Haas
Head, Civil, Architectural & Environmental Engineering
haascn@drexel.edu

Dr. Michael Piasecki
Graduate Advisor
(215) 895-1721
michael.piasecki@drexel.edu

2004 PHILA. SECTION, ASCE SALARY & BENEFITS SURVEY

Dear Fellow ASCE Members,
In May 2004, you were asked to complete the biennial ASCE Salary and Benefits Survey. The 2004 Survey was sent to the Section members as an insert in THE NEWS, and by e-mail. We received 68 handwritten and 22 electronic surveys for a total of 91 responses.

The median age of the respondents was 47, up from 45 in the 2002 survey. The median for full-time employment was 24 years, up from 22 years. The median salary is \$89,000, up from \$80,000 in 2002. Eighty-two percent of the respondents have been licensed Professional Engineers for 14 years.

There was a slight increase in female membership, up from 12% to 15%. This is nearly double the percentage from 1998. More than two-thirds of the respondents work for Consultants with 38% of the respondents employed in the City of Philadelphia. Sixty-eight percent of the respondents drive to work with the median commute time being 32 minutes.

Sixty-eight percent of the respondents believe that it would be "easy" or "very easy" to find a new job. This is an increase from 52% in 2002 but less than the 77% reported in 2000. Finally, 80% of the respondents said that, if given a second chance, they would still be a Civil Engineer. This is an increase from 73% and 76% in the previous two biennial surveys.

Thanks to all of the ASCE members who took the time to respond to this year's survey. Your participation is important for evaluating our careers and the state of the civil engineering profession. If you have any questions, comments, or observations on this survey, feel free to contact me at (215) 580-3404 or dmacbride@septa.org.

Dennis M. Mac Bride, P.E.
Professional Practices Committee

PERSONAL DATA	2004	2002	2000
Age	47 years	45 years	41 years
Years of full-time employment	24 years	22 years	17 years
Race			
Caucasian	90%	93%	91%
African American	1%	1%	2%
Hispanic	3%	1%	2%
Asian	5%	4%	5%
Other	1%	1%	1%
Sex			
Male	85%	88%	88%
Female	15%	12%	12%
Marital Status			
Single	10%	18%	16%
Married	87%	78%	80%
Divorced	3%	3%	2%
Widowed	0%	1%	2%
Number of children, if any	2	2	2
Education			
No Degree	1%	0%	0%
Bachelor's Degree	35%	30%	33%
BS + 15 hours	8%	14%	14%
Master's Degree	51%	49%	45%
Doctorate Degree	5%	7%	7%

PERSONAL DATA	2004	2002	2000
ASCE Membership Grade			
Student	1%	2%	1%
Associate	17%	32%	26%
Member	74%	58%	66%
Fellow	2%	2%	2%
Life 6%	6%	5%	
Number of years	10	10	10
Registration			
EIT only	13%	13%	21%
PE only	82%	82%	72%
LS only	0%	1%	1%
Both PE and LS	4%	5%	7%
Number of years	14 years	15 years	10
years			
Other Membership	2	2	1

EMPLOYMENT DATA	2004	2002	2000
Income Source			
Self-employed	9%	6%	5%
Salaried	88%	91%	93%
Commissioned	1%	0%	1%
Retired	1%	1%	2%
Unemployed	1%	0%	0%
Student	0%	1%	0%
Type of employer			
Consultant	67%	72%	65%
Contractor/Builder	3%	3%	6%
Federal Government	5%	2%	3%
State Government	3%	1%	3%
Municipal/Local/Regional			
Govt. or Authority	9%	14%	13%
Utility (Private & Public)	3%	3%	2%
Education	1%	5%	4%
Sales	2%	0%	0%
Other	7%	4%	4%
Number of Employees in organization	255	325	—
Primary Responsibility			
Technical	51%	55%	52%
Sales	1%	1%	1%
Management	41%	37%	40%
Administrative	5%	3%	5%
Other	2%	4%	2%
Do you supervise other people?			
Yes	71%	73%	73%
No	29%	27%	27%
Number of different employers since graduation	3	3	—
Do you have a second job?			
Yes	7%	4%	10%
No	93%	96%	90%
Years with current employer	8	6	8
Primary County of Employment			
PA - Bucks	5%	8%	10%
Chester	23%	18%	10%
Delaware	6%	7%	7%
Montgomery	19%	19%	27%
Philadelphia	38%	34%	38%
NJ - Burlington	1%	1%	2%
Camden	2%	1%	1%
Gloucester	1%	0%	1%
Other	5%	11%	4%
Primary County of Residence			
PA - Bucks	6%	15%	17%
Chester	29%	27%	17%
Delaware	17%	12%	14%
Montgomery	16%	22%	26%
Philadelphia	17%	16%	19%
NJ - Burlington	6%	3%	2%
Camden	5%	2%	4%
Gloucester	0%	0%	0%
Other	4%	3%	1%

PERSONAL DATA	2004	2002	2000
Method of Commuting			
Drive	68%	68%	71%
Mass Transit	12%	15%	18%
Car Pool	2%	0%	1%
Walk	1%	4%	4%
Drive & Mass Transit	14%	10%	5%
Other	3%	4%	1%
Approx. commuting time (minutes)	32	30	30
SALARY AND BENEFITS			
Salary (include normal overtime)	\$89,000	\$80,000	\$68,000
Bonus, if any	\$5,000	\$4,000	\$3,000
Overtime Remuneration			
None	64%	41%	50%
Time (Compensatory)	20%	19%	13%
Paid at regular pay rate	14%	36%	30%
Paid at time and one-half rate	2%	4%	—
Double time	0%	0%	0%
Hours worked per week	45	45	45
Vacation Days, Personal			
Days, etc.	17 days	17 days	15 days
Holidays	8 days	8 days	8 days
Sick Leave	5 days	6 days	7 days
Insurance			
Hospitalization			
100% Company Paid	29%	35%	33%
Partially Company Paid	70%	61%	65%
None	1%	4%	2%
Major Medical			
100% Company Paid	30%	33%	31%
Partially Company Paid	69%	63%	65%
None	1%	4%	4%
Dental			
100% Company Paid	17%	18%	18%
Partially Company Paid	69%	68%	69%
None	14%	14%	13%
Optical			
100% Company Paid	22%	10%	10%
Partially Company Paid	53%	66%	65%
None	25%	24%	25%
Disability			
100% Company Paid	50%	39%	39%
Partially Company Paid	34%	53%	52%
None	16%	8%	9%
Life			
100% Company Paid	57%	50%	51%
Partially Company Paid	28%	39%	38%
None	15%	11%	11%
Legal Fees			
100% Company Paid	5%	13%	13%
Partially Company Paid	7%	12%	13%
None	88%	75%	74%
Child Care			
100% Company Paid	0%	2%	1%
Partially Company Paid	3%	15%	15%
None	97%	83%	84%
Pension Plan			
Yes	49%	40%	57%
No	51%	60%	43%
Profit Sharing			
Yes	37%	38%	31%
No	42%	49%	53%
Not applicable	21%	14%	16%
401(k) or equivalent			
Yes	91%	88%	88%
No	9%	12%	12%

(Continued on Page 9)

PERSONAL DATA	2004	2002	2000
Formal severance pay policy			
Yes	26%	31%	28%
No	24%	69%	72%
Continuing education tuition reimbursement			
Yes	81%	79%	81%
No	19%	21%	19%
If yes, maximum percentage			
33% and 50%	15%	17%	9%
67, 70, 75, 80 and 90%	26%	24%	11%
20, 40 and 60%	0%	0%	3%
100%	59%	59%	77%

OPINIONS

Are you satisfied with your current employment situation?

Unsatisfied	4%	2%	4%
Somewhat unsatisfied	18%	14%	14%
Satisfied	28%	27%	33%
Mostly satisfied	24%	31%	29%
Very satisfied	26%	26%	21%

Do you believe that, in your current employment situation, you are performing true engineering work?

Yes	63%	66%	60%
No, administrative, etc.	30%	31%	33%
No, technician/draftsperson	2%	0%	0%
No, other functions	5%	3%	5%

Do you believe that your work is properly reviewed?

Yes	46%	41%	39%
Yes, but could be better	31%	44%	38%
No	10%	12%	11%
Not applicable	13%	10%	12%

Do you think you will be looking for a new job within the next two years?

Yes. If yes, why?	29%	26%	35%
No	71%	74%	65%
Salary	33%	8%	47%
Boss	22%	25%	20%
Lack of responsibility	19%	17%	8%
Other:	26%	13%	25%

If you were looking for a new job, what would be your most critical concern?

Pay and benefits	30%	23%	33%
Company reputation	7%	12%	9%
Responsibility	11%	9%	10%
Security	12%	5%	4%
Location	14%	14%	14%
Amount of travel	9%	4%	1%
Type of work	16%	21%	28%
Other	1%	12%	1%

How easy do you believe that it would be to find a new job?

Very easy	32%	15%	40%
Easy	36%	37%	37%
Somewhat difficult	26%	36%	19%
Difficult	6%	12%	5%

Do you believe that your salary, considering your experience and ability, compared to other Civil Engineers is:

Much lower	7%	1%	4%
Lower	37%	16%	23%
Similar	39%	42%	51%
Higher	16%	47%	21%
Much higher	1%	11%	2%

Do you believe your fringe benefits, compared to other Civil Engineers, are:

Much lower	6%	1%	4%
Lower	35%	12%	13%
Similar	32%	46%	58%
Higher	23%	34%	20%
Much higher	4%	8%	4%

PERSONAL DATA	2004	2002	2000
Is your professional physical environment important to you?			
Yes	73%	60%	86%
No	27%	40%	14%
Are you satisfied with your professional physical environment?			
Yes	79%	61%	80%
No	21%	39%	20%

Do you agree or disagree with following?

Registration should be required for all Engineers as a condition of continued employment.

Agree	52%	33%	44%
Disagree	48%	67%	56%

Continuing Education should be required to maintain registration.

Agree	56%	50%	61%
Disagree	44%	50%	39%

Consulting work should not be competitively bid.

Agree	63%	55%	
Disagree	37%	45%	

Advertising by Engineers that is not self-laudatory is acceptable.

Agree	95%	66%	91%
Disagree	5%	34%	9%

There is currently a shortage in the number of Civil Engineering Graduates.

Agree	57%	40%	62%
Disagree	43%	60%	38%

If you had a second chance, would you still become a Civil Engineer?

Yes	80%	73%	76%
No	20%	27%	24%

CITIZENS BANK PARK TOUR

(Continued from Page 1)

From there, John guided the group through the exclusive club areas and luxury suites which provide fans the ultimate baseball experience. A unique feature of the suites are folding glass windows that can be tucked against the wall which allow the largest unobstructed view possible.

According to John, the park seats 43,500 guests, and was constructed using approximately 11,000 tons of steel. John explained that the field elevation is approximately 10 feet below street level, and requires a drainage pump system to maintain a lower water table.

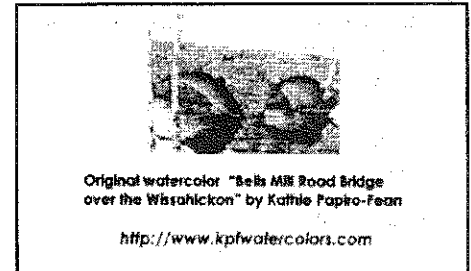
Throughout design, the Phillies organization was extremely involved in almost every detail of the park — down to the carpeting in the locker rooms and the bathroom signs. In the Hall of Fame Club area, there is a wall covered in baseballs, and the bars are covered in official home plates, and baseball bats.

With construction of the ballpark virtually complete, John has been staying busy with final punch list items for the building and the construction of a new parking lot at the location of the former Veterans Stadium. Special thanks goes to **Ruben David** for organizing this special event!

Mr. Wright is a Director of the ASCE, Philadelphia Section and a Project Engineer for DMJM+HARRIS Inc.

SCIENCE FAIR JUDGES NEEDED

The Section anticipates participating in the 2005 Science Fairs scheduled to be held in April 2005. If anyone is interested in either volunteering to be a judge for the Section's awards or being one of the over 500 volunteer judges needed for the overall Science Fair judging, contact Past President **Chris L. Rood, P.E.** at chris.rood@dmjmharris.com



Original watercolor "Bells Mill Road Bridge over the Wissahickon" by Kathie Papiro-Fean

<http://www.kpfwatercolors.com>

ASCE
 American Society of Civil Engineers
<http://www.asce-philly.org>

The Science Fair judges representing the Philadelphia Section have reviewed your project and thank you for sharing it with us. We congratulate you on your efforts and extend our best wishes for your future endeavors in the mathematical and scientific fields.

The card shown above (front and back views) was placed at all projects reviewed by the ASCE, Philadelphia Section's Judges' at the 2004 Fair. The Section thanks Gail Wright for the card design and artist Kathie Papiro-Fean for the use of her watercolor of the Bells Mill Road Bridge.

WJE ENGINEERS ARCHITECTS MATERIALS SCIENTISTS www.wje.com

Wiss, Janney, Elstner Associates, Inc.

- Structural Evaluation
- Building Envelope Assessment
- Repair Design
- Construction Materials Evaluation
- Historic Preservation
- Litigation Support
- Failure Investigation
- Structural Testing & Instrumentation

14 Washington Road, Suite 501, Princeton Junction, NJ 08550-1013
 Phone: 609.799.7799 Fax: 609.799.7088

OUR 100TH YEAR

EPHENRY Kevin Earley
 FOUNDED 1901. RETAINING WALL SALES

16 ANDERSON RD. PARKER FORD, PA 19457
 610-495-8533 u 800-44henry ext. 321 u FAX 610-495-1966
www.ephenny.com email: kearley@ephenny.com

TAYLOR WISEMAN & TAYLOR

POSITIONS AVAILABLE IN ALL OFFICES

MARK S. MAYHEW, PE Regional Manager Chalfont, PA 267-956-1020	ROBERT MC ANALLY, PE Regional Manager West Chester, PA 610-918-9200
--	--

www.taylorwiseman.com

ENGINEERING • SURVEYING • PLANNING
 LANDSCAPE ARCHITECTURE
 SUBSURFACE UTILITY ENGINEERING

JOIN THE SECTION'S TECHNICAL GROUPS

Construction

Brian Stover, P.E., Acting Chairman
Urban Engineers, Inc.
530 Walnut St., 14th Floor
Philadelphia, PA 19106
(215) 922-8080

Structural

Dr. Mohiuddin (Ali) Khan, P.E., Chairman
Manager, Bridge Division
STV Incorporated
820 Bear Tavern, Suite 105
Trenton, NJ 08628
(609) 530-9618

Transportation

William T. Thomsen, P.E., Acting Chairman
Urban Engineers Inc.
530 Walnut St., 14th Floor
Philadelphia, PA 19106
(215) 922-8080

Engineering Management

Dennis M. MacBride, P.E., Co-Chairman
SEPTA
1234 Market Street, 12th Floor
Philadelphia, PA 19107
(215) 580-3404

William J. Mulloy, P.E., Co-Chairman
U.S. Army Corps of Engineers
Wanamaker Building
106 Penn Square East
Philadelphia, PA 19107-3390
(215) 656-6583

Delaware Valley Geo Institute (DVGI)

Allen Cadden, P.E., Chairman
Schnabel Engineering Associates, Inc.
510 East Gay Street
West Chester, PA 19380
(610) 696-6066

GET YOUR NEWS ELECTRONICALLY!

You can get THE NEWS on your computer, directly via e-mail, and all you have to do is ask!

Over 200 of your fellow Section members have chosen the electronic version of THE NEWS since this service began a few years ago. If you elect the e-mail option, you can get THE NEWS sent to the computer of your choice (home, work, wherever) and therefore will see it about a week before the mailed copy might reach your mailbox.

You can also choose to get THE NEWS in both formats (hard copy and e-mail) if you prefer.

If you would like more information or would like to enroll in the e-mail list, please contact us through the Section's website, our electronic message hotline, or via "snail mail" through our Post Office Box.

**I was married by a judge.
I should have asked for a jury.**

— Groucho Marx

THANKS TO OUR SPONSORS

The Section Sponsorship program for 2003-04 was a resounding success. A total of 34 local firms took part in the program last season. The Section extends its collective "thank you" to our sponsors for their commitment and continued support of the Section.


There are several benefits available to you as a Section Sponsor. For a low \$200 annual fee, you too can be a part of this program and have your business card appear in each edition of THE NEWS, among other perks. You may have seen the cards of those who have decided to become Section Sponsors for the current season throughout this edition. If your firm is not in this esteemed group, and you would like to become a sponsor, this is the time to consider it.

For information on the program, please contact our Interim Editor, **Bob Wright** at (215) 686-5538 or robert.wright@phila.gov.



URBAN ENGINEERS, INC.
CIVIL ENGINEERING MULTIDISCIPLINARY FIRM
530 Walnut Street, 14th Floor | Philadelphia, PA 19106
p 215-922-8080 | f 215-922-8082 | 800-232-4596
Founded 1960 ■ ISO 9001 CERTIFIED ■ Employee Owned
Voted one of "Best Places to Work" in PA
www.urbanengineers.com

Valley Forge Laboratories, Inc.



Construction Services
Environmental Engineering
Geotechnical Engineering
Traffic Engineering

6 Berkeley Road • Devon, PA 19333
610.688.8517 • fax 610.688.8143
www.valleyforgelabs.com

McM MCMAHON ASSOCIATES, INC.

RESPONSIVE TRANSPORTATION SOLUTIONS

HOT FIRMS

Comprehensive Traffic Data Collection
Traffic Studies
Transportation Planning
Land Survey
Traffic Signal Design/ITS
Highway & Intersection Design
Pavement Design
Structural Design
Highway Occupancy/Access Permitting
Construction Surveillance & Inspection
Expert Witness Testimony

Corporate Headquarters
Fry, Washington, PA
715.283.9444
Colum, PA
610.594.9995
Middletown, PA
717.985.1300

www.mcmtrans.com

Pennoni

"Providing Engineering Services in Pennsylvania Since 1966"

PENNONI ASSOCIATES INC.
CONSULTING ENGINEERS

CIVIL/MUNICIPAL ENGINEERING
WATER & WASTEWATER ENGINEERING
TRANSPORTATION ENGINEERING
ENVIRONMENTAL
INSPECTION & TESTING

SITE DESIGN & LANDSCAPE ARCHITECTURE
LAND SURVEYING
BUILDING SYSTEMS
GEOTECHNICAL ENGINEERING
STRUCTURAL

Philadelphia Headquarters
One Overly Road
3801 Market Street
Philadelphia, PA 19104-2097
ph. 215.222.3000
fax 215.222.0184

visit pennoni on the web at www.pennoni.com

ENVIRONMENTAL SCIENCE & CIVIL ENGINEERING

CELEBRATING OUR 10TH ANNIVERSARY IN 2005!

THE RATSEP GROUP, INC.

LIRDA A. RATSEP, P.E.
PRINCIPAL
CIVIL/ENVIRONMENTAL ENGINEER

4 Chester County Commons
Malvern, PA 19355
www.ratsepgroup.com

Phone 610-695-8900
Fax 610-647-1950
E-mail: info@ratsepgroup.com

THE Burns GROUP
Engineering and Construction

Solutions
That Build Your Future

Philadelphia, PA
Edison, NJ

Pittsburgh, PA
McLean, VA

Wilmington, DE
Phoenix, AZ

www.burnsgroup.com

TPD TRAFFIC PLANNING AND DESIGN, INC.

Highway Design
Structure Design
Transportation Planning

2500 East High St., Ste. 650
Pottstown, PA 19466
610.326.7100
Fax 326-9410

www.TrafficTPD.com

Lehigh Valley, PA
Harrisburg, PA

DMJM
WATSON

Planning • Design • Environmental
Program & Construction Management • Specialty Services

1700 Market Street, Suite 1700 • Philadelphia PA 19103
Tel: 215-399-4300 • Fax: 215-399-4350
E-mail: www.dmjmatviation.com
AN AFCCOM COMPANY

THIS SPACE COULD BE YOURS!

You could be looking at your business card in this space instead of this notice. Your card could be here among those of your colleagues and competitors. If you would like to be a Section Sponsor, please contact Interim Editor **Bob Wright** at (215) 686-5538.

GeoStructures
GEOTECHNICAL ENGINEERING CONSULTANTS

- Subsurface Investigations
- Foundation Evaluations/Design
- Slope & Retaining Wall Design
- Soil Stabilization
- Geosynthetics Design
- Geologic Exploration/Mapping
- Phase 1 & 2 Site Assessments
- Sinkhole Assessment/Remedy
- Construction Monitoring
- Geotechnical Lab Testing

985 Old Eagle School Road, Suite 502, Wayne, PA 19087

Phone: 610.688.7066
Fax: 610.688.7065
www.geostructures.net